

Anti-Shoc2 / Sur8 antibody ab106430

[3 References](#) [画像数 2](#)

製品の概要

製品名	Anti-Shoc2 / Sur8 antibody
製品の詳細	Rabbit polyclonal to Shoc2 / Sur8
由来種	Rabbit
アプリケーション	適用あり: WB, IHC-P
種交差性	交差種: Human
免疫原	A 21 amino acid peptide near the N terminus of Human Shoc2/ Sur8 (NP_031399).
ポジティブ・コントロール	Jurkat cell lysate; Human spleen tissue
特記事項	<p>The Life Science industry has been in the grips of a reproducibility crisis for a number of years. Abcam is leading the way in addressing this with our range of recombinant monoclonal antibodies and knockout edited cell lines for gold-standard validation. Please check that this product meets your needs before purchasing.</p> <p>If you have any questions, special requirements or concerns, please send us an inquiry and/or contact our Support team ahead of purchase. Recommended alternatives for this product can be found below, along with publications, customer reviews and Q&As</p>

製品の特性

製品の状態	Liquid
保存方法	Shipped at 4°C. Upon delivery aliquot and store at -20°C. Avoid freeze / thaw cycles.
バッファー	pH: 7.2 Preservative: 0.02% Sodium azide Constituent: PBS
精製度	Immunogen affinity purified
ポリ/モノ	ポリクローナル
アイソタイプ	IgG

アプリケーション

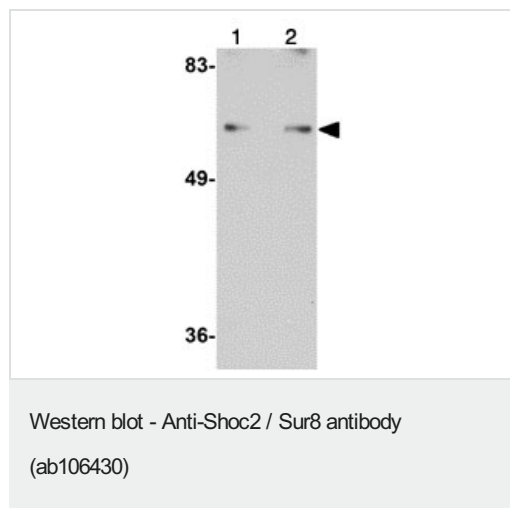
The Abpromise guarantee **Abpromise保証は、次のテスト済みアプリケーションにおけるab106430の使用に適用されます**
アプリケーションノートには、推奨の開始希釈率がありますが、適切な希釈率につきましてはご検討ください。

アプリケーション	Abreviews	特記事項
WB		Use a concentration of 1 - 2 µg/ml. Predicted molecular weight: 65 kDa.
IHC-P		Use a concentration of 5 µg/ml.

ターゲット情報

機能	Regulatory subunit of protein phosphatase 1 (PP1c) that acts as a M-Ras/MRAS effector and participates in MAPK pathway activation. Upon M-Ras/MRAS activation, targets PP1c to specifically dephosphorylate the 'Ser-259' inhibitory site of RAF1 kinase and stimulate RAF1 activity at specialized signaling complexes.
関連疾患	Defects in SHOC2 are the cause of Noonan syndrome-like with loose anagen hair (NSLAH) [MIM:607721]. NSLAH children display macrocephaly, high forehead, hypertelorism, palpebral ptosis, low-set and posteriorly rotated ears, short and webbed neck and pectus anomalies. Affected subjects also have easily pluckable, sparse, thin and slow-growing hair.
配列類似性	Belongs to the SHOC2 family. Contains 20 LRR (leucine-rich) repeats.
細胞内局在	Cytoplasm. Nucleus. Translocates from cytoplasm to nucleus upon growth factor stimulation.

画像



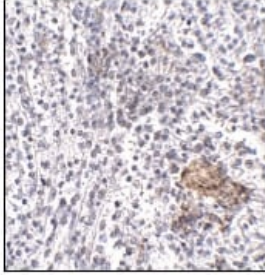
Lane 1 : Anti-Shoc2 / Sur8 antibody (ab106430) at 1 µg/ml

Lane 2 : Anti-Shoc2 / Sur8 antibody (ab106430) at 2 µg/ml

All lanes : Jurkat cell lysate

Lysates/proteins at 15 µg per lane.

Predicted band size: 65 kDa



ab106430, at 5 µg/ml, staining Shoc2 / Sur8 in paraffin embedded Human spleen tissue by Immunohistochemistry.

Immunohistochemistry (Formalin/PFA-fixed paraffin-embedded sections) - Anti-Shoc2 / Sur8 antibody (ab106430)

Please note: All products are "FOR RESEARCH USE ONLY. NOT FOR USE IN DIAGNOSTIC PROCEDURES"

Our Abpromise to you: Quality guaranteed and expert technical support

- Replacement or refund for products not performing as stated on the datasheet
- Valid for 12 months from date of delivery
- Response to your inquiry within 24 hours
- We provide support in Chinese, English, French, German, Japanese and Spanish
- Extensive multi-media technical resources to help you
- We investigate all quality concerns to ensure our products perform to the highest standards

If the product does not perform as described on this datasheet, we will offer a refund or replacement. For full details of the Abpromise, please visit <https://www.abcam.co.jp/abpromise> or contact our technical team.

Terms and conditions

- Guarantee only valid for products bought direct from Abcam or one of our authorized distributors