

### Anti-SGLT2 antibody ab37296

★★★★★ 12 Abreviews 34 References 両俵数 1

医薬用外劇物

#### 製品の概要

製品名	Anti-SGLT2 antibody
製品の詳細	Rabbit polyclonal to SGLT2
由来種	Rabbit
特異性	The antibody detects 74 kDa SGLT-2 from human, mouse, and rat origins. Reactivity to other species has not been determined. A ~55 kDa and a ~45 kDa band can also be detected, representing the SGLT-2 cleavage fragments.
アプリケーション	<b>適用あり:</b> WB
種交差性	<b>交差種:</b> Mouse, Rat, Human
免疫原	Synthetic peptide corresponding to Mouse SGLT2 (N terminal). Database link: <a href="#">Q92317</a>
ポジティブ・コントロール	WB: Jurkat, NIH3T3, PC12
特記事項	<p>This product is manufactured by BioVision, an Abcam company and was previously called 3690 SGLT-2 Antibody. 3690-100 is the same size as the 100 µg size of ab37296.</p> <p>The Life Science industry has been in the grips of a reproducibility crisis for a number of years. Abcam is leading the way in addressing this with our range of recombinant monoclonal antibodies and knockout edited cell lines for gold-standard validation. Please check that this product meets your needs before purchasing.</p> <p>If you have any questions, special requirements or concerns, please send us an inquiry and/or contact our Support team ahead of purchase. Recommended alternatives for this product can be found below, along with publications, customer reviews and Q&amp;As</p>

#### 製品の特性

製品の状態	Liquid
保存方法	Shipped at 4°C. Upon delivery aliquot and store at -20°C or -80°C. Avoid repeated freeze / thaw cycles.
バッファー	Preservative: 0.02% Thimerosal (merthiolate) Constituents: 1% BSA, 50% Glycerol (glycerin, glycerine), PBS
精製度	Protein A purified
ポリ/モノ	ポリクローナル

アイソタイプ

IgG

アプリケーション

The Abpromise guarantee

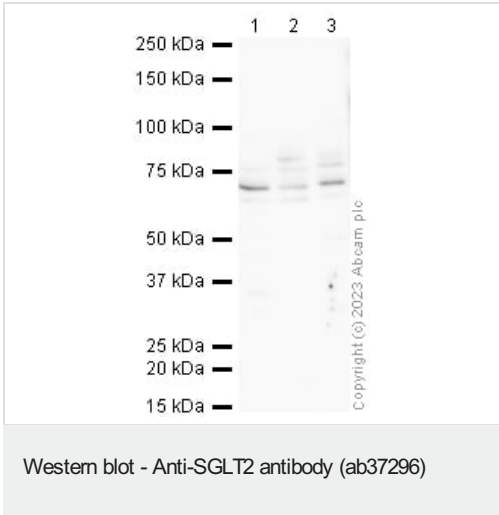
Abpromise保証は、次のテスト済みアプリケーションにおけるab37296の使用に適用されます  
アプリケーションノートには、推奨の開始希釈率がありますが、適切な希釈率につきましてはご検討ください。

アプリケーション	Abreviews	特記事項
WB	★★★★☆ (8)	Use a concentration of 1 µg/ml. Predicted molecular weight: 73 kDa.

ターゲット情報

機能	Sodium-dependent glucose transporter. Has a Na(+) to glucose coupling ratio of 1:1. Efficient substrate transport in mammalian kidney is provided by the concerted action of a low affinity high capacity and a high affinity low capacity Na(+)/glucose cotransporter arranged in series along kidney proximal tubules.
関連疾患	Defects in SLC5A2 are the cause of renal glucosuria (GLYS1) [MIM:233100]. GLYS1 is an autosomal recessive disorder characterized by a normal fasting serum glucose concentration and persistent isolated glucosuria, with a normal glucose tolerance test.
配列類似性	Belongs to the sodium:solute symporter (SSF) (TC 2.A.21) family.
細胞内局在	Membrane.

画像



**All lanes :** Anti-SGLT2 antibody (ab37296) at 1 µg/ml

**Lane 1 :** Jurkat  
**Lane 2 :** NIH3T3  
**Lane 3 :** PC12

Lysates/proteins at 20 µg per lane.

**Secondary**  
**All lanes :** Goat Polyclonal to Rabbit IgG - H&L - Pre-Adsorbed (HRP) at 1/50000 dilution

**Predicted band size:** 73 kDa

Blocking buffer: 3% milk

**Please note:** All products are "FOR RESEARCH USE ONLY. NOT FOR USE IN DIAGNOSTIC PROCEDURES"

### **Our Abpromise to you: Quality guaranteed and expert technical support**

---

- Replacement or refund for products not performing as stated on the datasheet
- Valid for 12 months from date of delivery
- Response to your inquiry within 24 hours
- We provide support in Chinese, English, French, German, Japanese and Spanish
- Extensive multi-media technical resources to help you
- We investigate all quality concerns to ensure our products perform to the highest standards

If the product does not perform as described on this datasheet, we will offer a refund or replacement. For full details of the Abpromise, please visit <https://www.abcam.co.jp/abpromise> or contact our technical team.

### **Terms and conditions**

---

- Guarantee only valid for products bought direct from Abcam or one of our authorized distributors