

### Anti-SGLT1 antibody ab14686

★★★★★ [10 Abreviews](#) [61 References](#) [画像数 1](#)

#### 製品の概要

製品名	Anti-SGLT1 antibody
製品の詳細	Rabbit polyclonal to SGLT1
由来種	Rabbit
アプリケーション	<b>適用あり:</b> WB, ELISA, Dot blot, IP <b>適用なし:</b> IHC-P
種交差性	<b>交差種:</b> Rat, Human
免疫原	Synthetic peptide corresponding to Human SGLT1 aa 402-422. Synthetic peptide, corresponding to amino acids 402-422 of Human SGLT1 Database link: <a href="#">P13866</a> (Peptide available as <a href="#">ab190911</a> )
ポジティブ・コントロール	WB: Rat enterocytes, rat heart, and human skeletal muscle tissues lysates.
特記事項	A blocking peptide for this product is available as <a href="#">ab190911</a> .  The Life Science industry has been in the grips of a reproducibility crisis for a number of years. Abcam is leading the way in addressing this with our range of recombinant monoclonal antibodies and knockout edited cell lines for gold-standard validation. Please check that this product meets your needs before purchasing.  If you have any questions, special requirements or concerns, please send us an inquiry and/or contact our Support team ahead of purchase. Recommended alternatives for this product can be found below, along with publications, customer reviews and Q&As

#### 製品の特性

製品の状態	Liquid
保存方法	Shipped at 4°C. Store at +4°C short term (1-2 weeks). Upon delivery aliquot. Store at -20°C or -80°C. Avoid freeze / thaw cycle.
バッファー	Preservative: 0.02% Sodium azide Constituents: Tris glycine, 0.5% BSA, HEPES, 30% Glycerol
精製度	Immunogen affinity purified
特記事項 (精製)	Purified on antigen sepharose affinity column
ポリ/モノ	ポリクローナル

アプリケーション

The Abpromise guarantee      **Abpromise保証は、**次のテスト済みアプリケーションにおけるab14686の使用に適用されます  
アプリケーションノートには、推奨の開始希釈率がありますが、適切な希釈率につきましてはご検討ください。

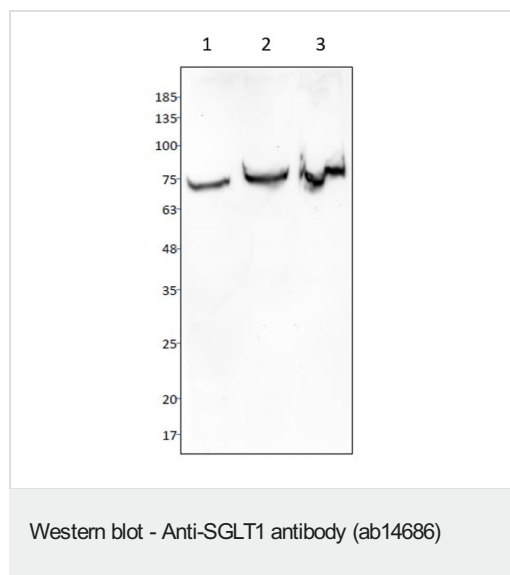
アプリケーション	Abreviews	特記事項
WB	★★★★★ (6)	1/500 - 1/1000. Detects a band of approximately 74 kDa (predicted molecular weight: 73 kDa).
ELISA		Use at an assay dependent concentration.
Dot blot		Use at an assay dependent concentration.
IP		Use at an assay dependent concentration.

追加情報      Is unsuitable for IHC-P.

ターゲット情報

機能	Actively transports glucose into cells by Na(+) cotransport with a Na(+) to glucose coupling ratio of 2:1. Efficient substrate transport in mammalian kidney is provided by the concerted action of a low affinity high capacity and a high affinity low capacity Na(+)/glucose cotransporter arranged in series along kidney proximal tubules.
組織特異性	Expressed mainly in intestine and kidney.
関連疾患	Congenital glucose/galactose malabsorption
配列類似性	Belongs to the sodium:solute symporter (SSF) (TC 2.A.21) family.
翻訳後修飾	N-glycosylation is not necessary for the cotransporter function.
細胞内局在	Membrane.

画像



**All lanes :** Anti-SGLT1 antibody (ab14686) at 1/500 dilution

**Lane 1 :** Rat enterocytes

**Lane 2 :** Rat heart tissue

**Lane 3 :** Human skeletal muscle tissue

**Predicted band size:** 73 kDa

Tissue extracts were made in Solobuffer with protease inhibitors.

The samples were solubilized in SDS-PAGE sample buffer and reduced with 2.5% BME.

Total 40-50ug protein was applied per lane on 10% SDS PAGE gels.

The proteins were transferred to nitrocellulose F and blocked with 5% milk and blotted with 1:500 diluted ab14686.

The image was obtained with high sensitivity ECL assay and Image was captured with a CCD cooled camera for 30 sec.

**Please note:** All products are "FOR RESEARCH USE ONLY. NOT FOR USE IN DIAGNOSTIC PROCEDURES"

### Our Abpromise to you: Quality guaranteed and expert technical support

- Replacement or refund for products not performing as stated on the datasheet
- Valid for 12 months from date of delivery
- Response to your inquiry within 24 hours
- We provide support in Chinese, English, French, German, Japanese and Spanish
- Extensive multi-media technical resources to help you
- We investigate all quality concerns to ensure our products perform to the highest standards

If the product does not perform as described on this datasheet, we will offer a refund or replacement. For full details of the Abpromise, please visit <https://www.abcam.co.jp/abpromise> or contact our technical team.

### Terms and conditions

- Guarantee only valid for products bought direct from Abcam or one of our authorized distributors