

# Anti-SF3B3 antibody [EPR18440] ab209402

リコンビナント RabMAb<sup>®</sup>

## 3 References [画像数 13](#)

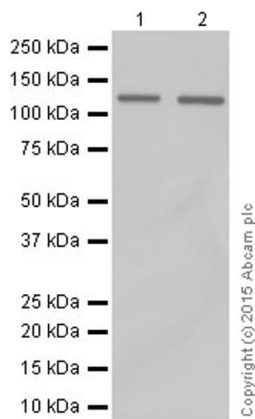
### 製品の概要

製品名	Anti-SF3B3 antibody [EPR18440]
製品の詳細	Rabbit monoclonal [EPR18440] to SF3B3
由来種	Rabbit
アプリケーション	<b>適用あり:</b> IP, Flow Cyt (Intra), WB, IHC-P, ICC/IF
種交差性	<b>交差種:</b> Mouse, Rat, Human
免疫原	Synthetic peptide. This information is proprietary to Abcam and/or its suppliers.
ポジティブ・コントロール	WB: HeLa, Jurkat, C6 and RAW 264.7 whole cell lysates; Human fetal liver, fetal heart and fetal kidney lysates; Mouse brain, heart, kidney and spleen lysates; Rat brain, heart and kidney lysates. IHC-P: Human colon, Human breast cancer (ER+) and Human breast cancer (ER-) tissues; Mouse cerebral cortex tissue; Rat kidney tissue. ICC/IF: C6 and RAW 264.7 cells. Flow Cyt (intra): HeLa cells.
特記事項	<p>This product is a recombinant monoclonal antibody, which offers several advantages including:</p> <ul style="list-style-type: none"><li>- High batch-to-batch consistency and reproducibility</li><li>- Improved sensitivity and specificity</li><li>- Long-term security of supply</li><li>- Animal-free production</li></ul> <p>For more information <a href="#">see here</a>.</p> <p>Our RabMAb<sup>®</sup> technology is a patented hybridoma-based technology for making rabbit monoclonal antibodies. For details on our patents, please refer to <a href="#">RabMAb<sup>®</sup> patents</a>.</p>

### 製品の特性

製品の状態	Liquid
保存方法	Shipped at 4°C. Store at +4°C short term (1-2 weeks). Upon delivery aliquot. Store at -20°C long term. Avoid freeze / thaw cycle.
バッファー	pH: 7.2 Preservative: 0.01% Sodium azide Constituents: 59% PBS, 40% Glycerol (glycerin, glycerine), 0.05% BSA
精製度	Protein A purified
ポリ/モノ	モノクローナル





Western blot - Anti-SF3B3 antibody [EPR18440] (ab209402)

**All lanes :** Anti-SF3B3 antibody [EPR18440] (ab209402) at 1/20000 dilution

**Lane 1 :** HeLa (Human epithelial cell line from cervix adenocarcinoma) whole cell lysate

**Lane 2 :** Jurkat (Human T cell leukemia cell line from peripheral blood) whole cell lysate

Lysates/proteins at 20 µg per lane.

**Secondary**

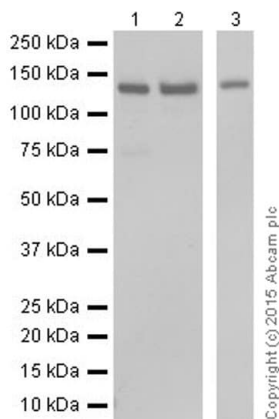
**All lanes :** Goat Anti-Rabbit IgG H&L (HRP) (ab97051) at 1/100000 dilution

**Predicted band size:** 136 kDa

**Observed band size:** 136 kDa

**Exposure time:** 8 seconds

Blocking/Dilution buffer: 5% NFDm/TBST.



Western blot - Anti-SF3B3 antibody [EPR18440] (ab209402)

**All lanes :** Anti-SF3B3 antibody [EPR18440] (ab209402) at 1/2000 dilution

**Lane 1 :** Human fetal liver lysate

**Lane 2 :** Human fetal heart lysate

**Lane 3 :** Human fetal kidney lysate

Lysates/proteins at 10 µg per lane.

**Secondary**

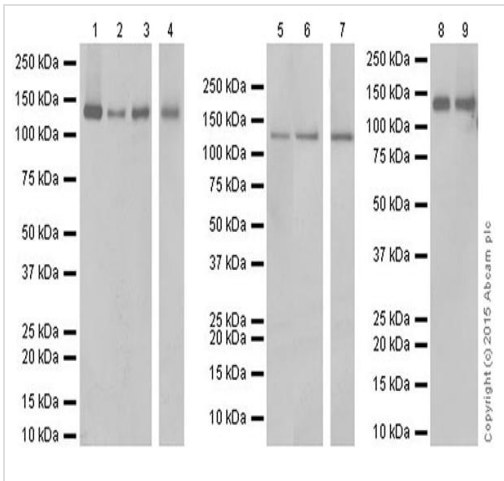
**All lanes :** Goat Anti-Rabbit IgG Peroxidase Conjugate, specific to the non-reduced form of IgG at 1/10000 dilution

**Predicted band size:** 136 kDa

**Observed band size:** 136 kDa

Blocking/Dilution buffer: 5% NFDm/TBST.

**Exposure time :** Lane 1/2: 4 seconds; Lane 3: 1 second.



Western blot - Anti-SF3B3 antibody [EPR18440] (ab209402)

**All lanes** : Anti-SF3B3 antibody [EPR18440] (ab209402) at 1/2000 dilution

**Lane 1** : Mouse brain lysate

**Lane 2** : Mouse heart lysate

**Lane 3** : Mouse kidney lysate

**Lane 4** : Mouse spleen lysate

**Lane 5** : Rat brain lysate

**Lane 6** : Rat kidney lysate

**Lane 7** : Rat heart lysate

**Lane 8** : C6 (Rat glial tumor cell line) whole cell lysate

**Lane 9** : RAW 264.7 (Mouse macrophage cell line transformed with Abelson murine leukemia virus) whole cell lysate

Lysates/proteins at 10 µg per lane.

### Secondary

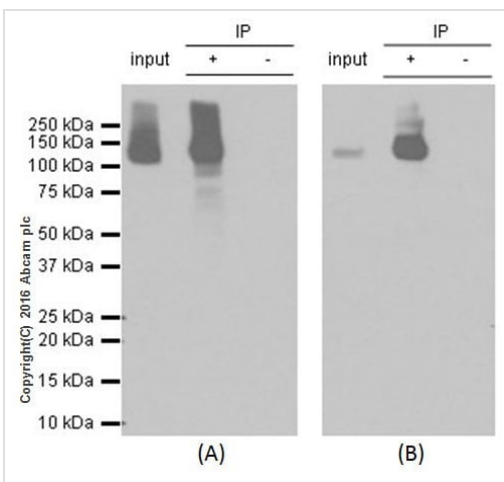
**All lanes** : Goat Anti-Rabbit IgG H&L (HRP) (**ab97051**) at 1/100000 dilution

**Predicted band size:** 136 kDa

**Observed band size:** 136 kDa

Blocking/Dilution buffer: 5% NFDm/TBST.

**Exposure time** : Lane 1/2/3: 4 seconds; Lane 4/5/6/8/9: 1 second; Lane 7: 8 seconds.



Immunoprecipitation - Anti-SF3B3 antibody [EPR18440] (ab209402)

ab209402 at 1/60 immunoprecipitating SF3B3 in HeLa (human cervix adenocarcinoma) whole cell lysate observed at 136 KDa (lanes 1 and 2).

Lane 1 (input): HeLa whole cell lysate 10µg

Lane 2 (+): ab209402 + HeLa whole cell lysate.

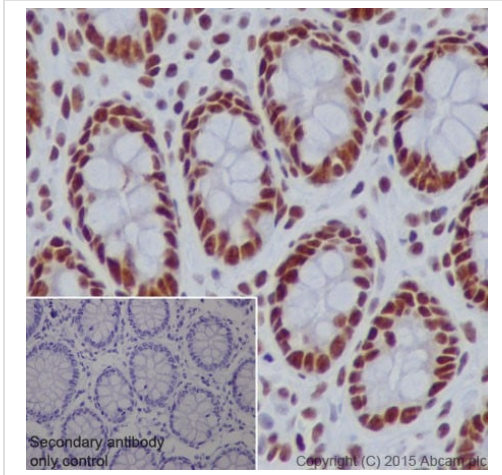
Lane 3 (-): Rabbit monoclonal IgG (**ab172730**) instead of ab209402 in HeLa whole cell lysate

For western blotting, Panel A: ab209402, 1:500; Panel B: **ab209403**, 1:500 and VeriBlot for IP Detection Reagent (HRP) (**ab131366**), was used for detection at 1/10,000 dilution.

Ab209402 was used to capture the target, and the WB was developed with ab209402 (A) **ab209403** (B).

Blocking buffer and concentration: 5% NFDm/TBST.

Diluting buffer and concentration: 5% NFD /TBST.



Immunohistochemistry (Formalin/PFA-fixed paraffin-embedded sections) - Anti-SF3B3 antibody [EPR18440] (ab209402)

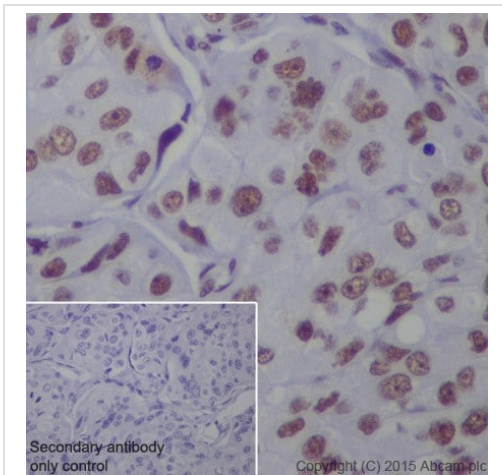
Immunohistochemical analysis of paraffin-embedded Human colon tissue labeling SF3B3 with ab209402 at 1/4000 dilution, followed by Goat Anti-Rabbit IgG H&L (HRP) ([ab97051](#)) at 1/500 dilution.

Nucleus staining on Human colon is observed.

Counter stained with Hematoxylin.

Secondary antibody only control: Used PBS instead of primary antibody, secondary antibody is Goat Anti-Rabbit IgG H&L (HRP) ([ab97051](#)) at 1/500 dilution.

Perform heat mediated antigen retrieval with Tris/EDTA buffer pH 9.0 before commencing with IHC staining protocol.



Immunohistochemistry (Formalin/PFA-fixed paraffin-embedded sections) - Anti-SF3B3 antibody [EPR18440] (ab209402)

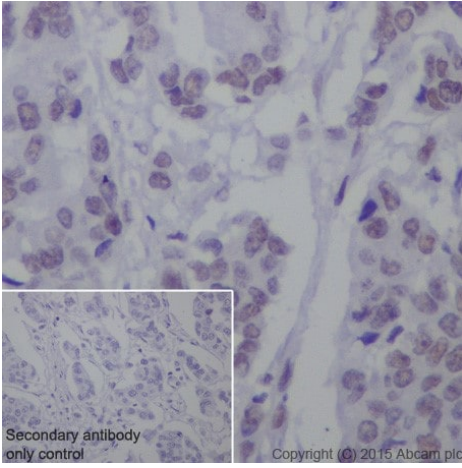
Immunohistochemical analysis of paraffin-embedded Human breast cancer (ER+) tissue labeling SF3B3 with ab209402 at 1/4000 dilution, followed by Goat Anti-Rabbit IgG H&L (HRP) ([ab97051](#)) at 1/500 dilution.

Nucleus staining on ER+ breast cancer is observed.

Counter stained with Hematoxylin.

Secondary antibody only control: Used PBS instead of primary antibody, secondary antibody is Goat Anti-Rabbit IgG H&L (HRP) ([ab97051](#)) at 1/500 dilution.

Perform heat mediated antigen retrieval with Tris/EDTA buffer pH 9.0 before commencing with IHC staining protocol.



Immunohistochemistry (Formalin/PFA-fixed paraffin-embedded sections) - Anti-SF3B3 antibody [EPR18440] (ab209402)

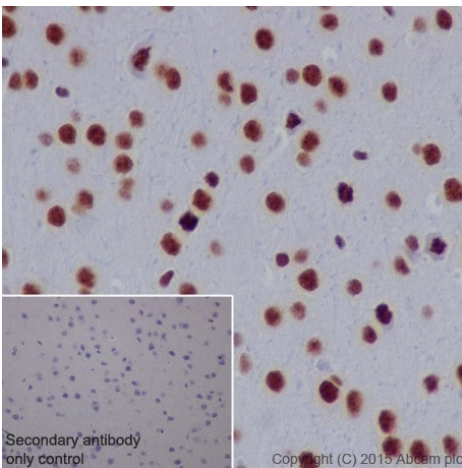
Immunohistochemical analysis of paraffin-embedded Human breast cancer (ER-) tissue labeling SF3B3 with ab209402 at 1/4000 dilution, followed by Goat Anti-Rabbit IgG H&L (HRP) (**ab97051**) at 1/500 dilution.

Weak nucleus staining on ER- breast cancer is observed.

Counter stained with Hematoxylin.

Secondary antibody only control: Used PBS instead of primary antibody, secondary antibody is Goat Anti-Rabbit IgG H&L (HRP) (**ab97051**) at 1/500 dilution.

Perform heat mediated antigen retrieval with Tris/EDTA buffer pH 9.0 before commencing with IHC staining protocol.

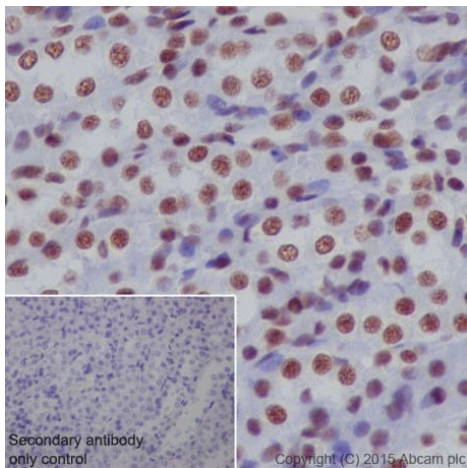


Immunohistochemistry (Formalin/PFA-fixed paraffin-embedded sections) - Anti-SF3B3 antibody [EPR18440] (ab209402)

Immunohistochemical analysis of paraffin-embedded mouse cerebral cortex tissue labeling SF3B3 with ab209402 at 1/4000 dilution, followed by Goat Anti-Rabbit IgG H&L (HRP) (**ab97051**) at 1/500 dilution. Nucleus staining on mouse cerebral cortex is observed. Counter stained with Hematoxylin.

Secondary antibody only control: Used PBS instead of primary antibody, secondary antibody is Goat Anti-Rabbit IgG H&L (HRP) (**ab97051**) at 1/500 dilution.

Perform heat mediated antigen retrieval with Tris/EDTA buffer pH 9.0 before commencing with IHC staining protocol.



Immunohistochemistry (Formalin/PFA-fixed paraffin-embedded sections) - Anti-SF3B3 antibody [EPR18440] (ab209402)

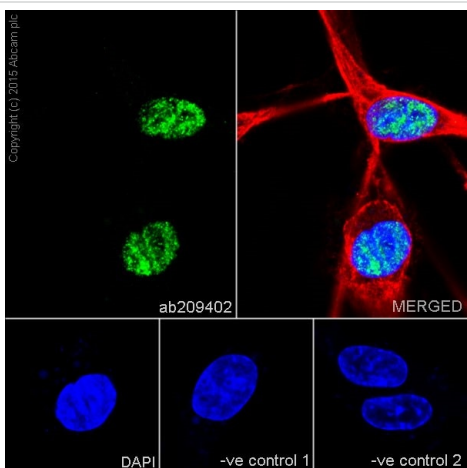
Immunohistochemical analysis of paraffin-embedded rat kidney tissue labeling SF3B3 with ab209402 at 1/4000 dilution, followed by Goat Anti-Rabbit IgG H&L (HRP) ([ab97051](#)) at 1/500 dilution.

Nucleus staining on rat kidney is observed.

Counter stained with Hematoxylin.

Secondary antibody only control: Used PBS instead of primary antibody, secondary antibody is Goat Anti-Rabbit IgG H&L (HRP) ([ab97051](#)) at 1/500 dilution.

Perform heat mediated antigen retrieval with Tris/EDTA buffer pH 9.0 before commencing with IHC staining protocol.



Immunocytochemistry/ Immunofluorescence - Anti-SF3B3 antibody [EPR18440] (ab209402)

Immunofluorescent analysis of 4% paraformaldehyde-fixed, 0.1% Triton X-100 permeabilized C6 (Rat glial tumor cell line) cells labeling SF3B3 with ab209402 at 1/500 dilution, followed by Goat Anti-Rabbit IgG (Alexa Fluor® 488) ([ab150077](#)) secondary antibody at 1/1000 dilution (green).

Confocal image showing nuclear staining on C6 cell line.

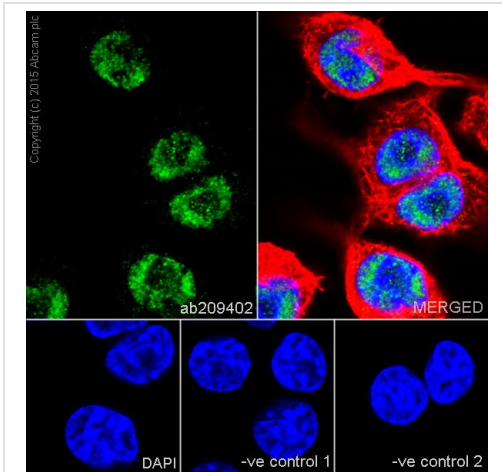
The nuclear counterstain is DAPI (blue).

Tubulin is detected with Anti-alpha Tubulin antibody - Loading Control ([ab7291](#)) at 1/1000 dilution and Goat Anti-Mouse IgG (AlexaFluor®594) preadsorbed ([ab150120](#)) at 1/1000 dilution (red).

The negative controls are as follows:-

-ve control 1: ab209402 at 1/500 dilution followed by [ab150120](#) at 1/1000 dilution.

-ve control 2: [ab7291](#) at 1/1000 dilution followed by [ab150077](#) at 1/1000 dilution.



Immunocytochemistry/ Immunofluorescence - Anti-SF3B3 antibody [EPR18440] (ab209402)

Immunofluorescent analysis of 4% paraformaldehyde-fixed, 0.1% Triton X-100 permeabilized RAW 264.7 (Mouse macrophage cell line transformed with Abelson murine leukemia virus) cells labeling SF3B3 with ab209402 at 1/500 dilution, followed by Goat Anti-Rabbit IgG (Alexa Fluor® 488) (**ab150077**) secondary antibody at 1/1000 dilution (green).

Confocal image showing nuclear staining on RAW 264.7 cell line.

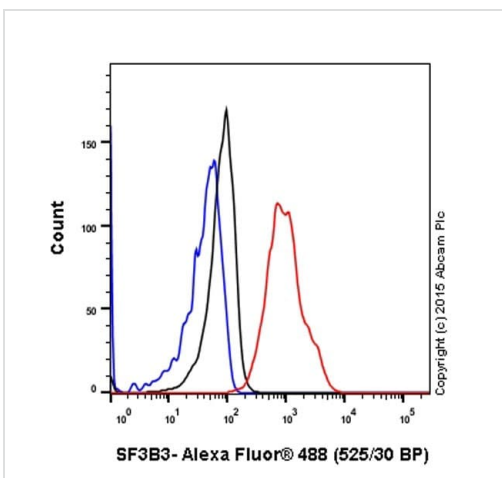
The nuclear counterstain is DAPI (blue).

Tubulin is detected with Anti-alpha Tubulin antibody - Loading Control (**ab7291**) at 1/1000 dilution and Goat Anti-Mouse IgG (AlexaFluor®594) preadsorbed (**ab150120**) at 1/1000 dilution (red).

The negative controls are as follows:-

-ve control 1: ab209402 at 1/500 dilution followed by **ab150120** at 1/1000 dilution.

-ve control 2: **ab7291** at 1/1000 dilution followed by **ab150077** at 1/1000 dilution.







Flow Cytometry (Intracellular) - Anti-SF3B3 antibody [EPR18440] (ab209402)

Intracellular flow cytometric analysis of 4% paraformaldehyde-fixed HeLa (Human epithelial cell line from cervix adenocarcinoma) cells labeling SF3B3 with ab209402 at 1/200 dilution (red) compared with a Rabbit IgG, monoclonal - Isotype control (**ab172730**) (black) and an unlabelled control (cells without incubation with primary antibody and secondary antibody) (blue). Goat anti Rabbit IgG (Alexa Fluor® 488) at 1/500 dilution was used as the secondary antibody.



Why choose a recombinant antibody?

 <p><b>Research with confidence</b> Consistent and reproducible results</p>	 <p><b>Long-term and scalable supply</b> Recombinant technology</p>
 <p><b>Success from the first experiment</b> Confirmed specificity</p>	 <p><b>Ethical standards compliant</b> Animal-free production</p>

Anti-SF3B3 antibody [EPR18440] (ab209402)

**Please note:** All products are "FOR RESEARCH USE ONLY. NOT FOR USE IN DIAGNOSTIC PROCEDURES"

### Our Abpromise to you: Quality guaranteed and expert technical support

---

- Replacement or refund for products not performing as stated on the datasheet
- Valid for 12 months from date of delivery
- Response to your inquiry within 24 hours
- We provide support in Chinese, English, French, German, Japanese and Spanish
- Extensive multi-media technical resources to help you
- We investigate all quality concerns to ensure our products perform to the highest standards

If the product does not perform as described on this datasheet, we will offer a refund or replacement. For full details of the Abpromise, please visit <https://www.abcam.co.jp/abpromise> or contact our technical team.

### Terms and conditions

---

- Guarantee only valid for products bought direct from Abcam or one of our authorized distributors