

Anti-SESN1 antibody [EPR1930(2)] ab134091

リコンビナント RabMAb

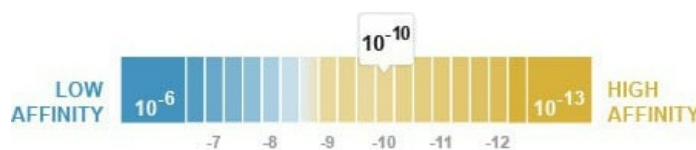
10 References [画像数 6](#)

製品の概要

製品名	Anti-SESN1 antibody [EPR1930(2)]
製品の詳細	Rabbit monoclonal [EPR1930(2)] to SESN1
由来種	Rabbit
アプリケーション	適用あり: WB, Flow Cyt (Intra) 適用なし: ICC/IF, IHC-P or IP
種交差性	交差種: Mouse, Rat, Human
免疫原	Synthetic peptide within Human SESN1 aa 100-200 (internal sequence). The exact sequence is proprietary.
ポジティブ・コントロール	WB: Human heart, Ramos, K-562, JAR, HeLa, F9, C2C12, NIH/3T3, and Rat heart lysates. Flow Cyt (intra): Daudi and permeabilized K562 cells,
特記事項	This product is a recombinant monoclonal antibody, which offers several advantages including: <ul style="list-style-type: none"> - High batch-to-batch consistency and reproducibility - Improved sensitivity and specificity - Long-term security of supply - Animal-free production For more information see here . Our RabMAb [®] technology is a patented hybridoma-based technology for making rabbit monoclonal antibodies. For details on our patents, please refer to RabMAb[®] patents .

製品の特性

製品の状態	Liquid
保存方法	Shipped at 4°C. Store at -20°C. Stable for 12 months at -20°C.
解離定数 (K _D 値)	K _D = 2.08 x 10 ⁻¹⁰ M



[Learn more about K_D](#)

バッファー pH: 7.20

Preservative: 0.01% Sodium azide
Constituents: PBS, 40% Glycerol (glycerin, glycerine), 0.05% BSA
Protein A purified
モノクローナル
EPR1930(2)
IgG

精製度
ポリ/モノ
クローン名
アイソタイプ

アプリケーション

The Abpromise guarantee Abpromise保証は、次のテスト済みアプリケーションにおけるab134091の使用に適用されます
アプリケーションノートには、推奨の開始希釈率がありますが、適切な希釈率につきましてはご検討ください。

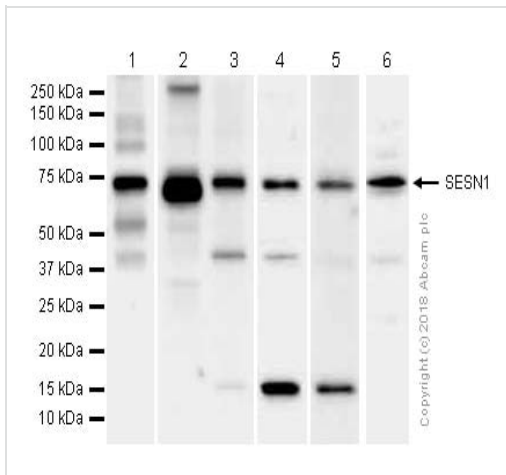
アプリケーション	Abreviews	特記事項
WB		1/1000 - 1/10000. Predicted molecular weight: 57 kDa.
Flow Cyt (Intra)		1/100 - 1/500. ab172730 - Rabbit monoclonal IgG, is suitable for use as an isotype control with this antibody.

追加情報 Is unsuitable for ICC/IF, IHC-P or IP.

ターゲット情報

機能 Involved in the reduction of peroxiredoxins. May also be regulator of cellular growth.
組織特異性 Widely expressed.
配列類似性 Belongs to the sestrin family.
翻訳後修飾 Phosphorylated upon DNA damage, probably by ATM or ATR.
細胞内局在 Nucleus.

画像



Western blot - Anti-SESN1 antibody [EPR1930(2)] (ab134091)

All lanes : Anti-SESN1 antibody [EPR1930(2)] (ab134091) at 1/1000 dilution (Purified)

Lane 1 : Human heart lysates

Lane 2 : K-562 (Human chronic myelogenous leukemia lymphoblast) whole cell lysates

Lane 3 : F9 (Mouse embryonal carcinoma epithelial cell) whole cell lysates

Lane 4 : C2C12 (Mouse myoblasts myoblast) whole cell lysates

Lane 5 : NIH/3T3 (Mouse embryonic fibroblast) whole cell lysates

Lane 6 : Rat heart lysates

Lysates/proteins at 15 µg per lane.

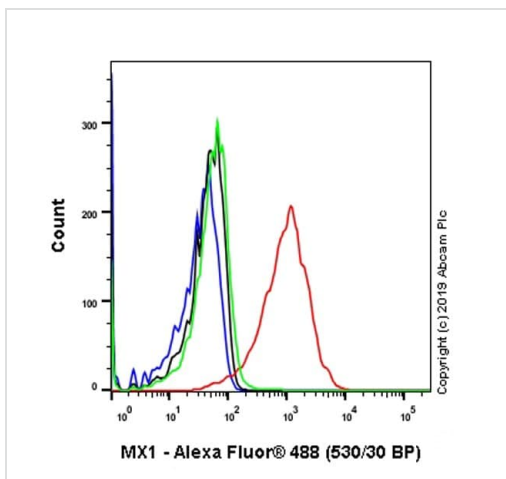
Secondary

All lanes : Goat Anti-Rabbit IgG H&L (HRP) (**ab97051**) at 1/20000 dilution

Predicted band size: 57 kDa

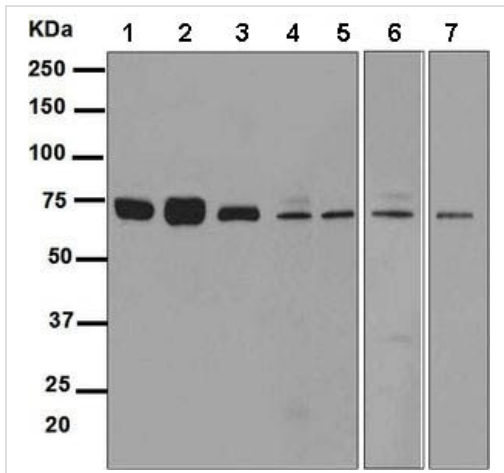
Observed band size: 65 kDa

The bands observed are consistent with what has been described in PMID: 29751091 and PMID: 29263116



Flow Cytometry (Intracellular) - Anti-SESN1 antibody [EPR1930(2)] (ab134091)

Intracellular Flow Cytometry analysis of Daudi (Human Burkitt's lymphoma lymphoblast) cells treated with 20 U/ml IFN alpha 1 for 24 hours (Red) / Untreated control (Green) labelling Anti-SESN1 with unpurified **ab207414** at 1/600 dilution. Cells were fixed with 2% paraformaldehyde. A Goat anti rabbit IgG (Alexa Fluor® 488, **ab150077**) was used as the secondary antibody. Black - isotype control, Rabbit monoclonal IgG (**ab172730**). Blue -unlabelled control, cells without incubation with primary and secondary antibodies.



Western blot - Anti-SESN1 antibody [EPR1930(2)] (ab134091)

Lanes 1 & 3-7 : Anti-SESN1 antibody [EPR1930(2)] (ab134091) at 1/1000 dilution ((unpurified))

Lane 2 : Anti-SESN1 antibody [EPR1930(2)] (ab134091) at 1/1000 dilution

Lane 1 : Ramos cell lysate

Lane 2 : K562 cell lysate

Lane 3 : HeLa cell lysate

Lane 4 : C2C12 cell lysate

Lane 5 : NIH3T3 cell lysate

Lane 6 : F9 cell lysate

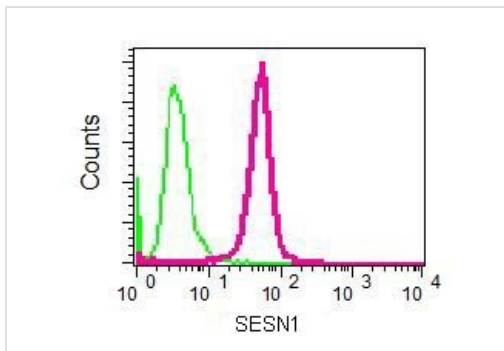
Lane 7 : JAR cell lysate

Lysates/proteins at 10 µg per lane.

Secondary

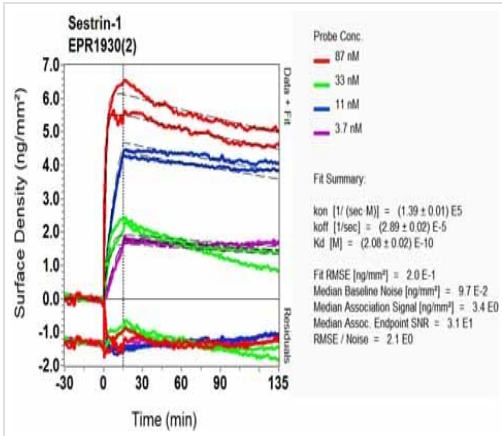
All lanes : HRP labelled goat anti-rabbit at 1/2000 dilution

Predicted band size: 57 kDa



Flow Cytometry (Intracellular) - Anti-SESN1 antibody [EPR1930(2)] (ab134091)

Intracellular Flow Cytometry analysis of permeabilized K562 cells labeling SESN1 with unpurified ab134091 at 1/100 dilution (red). Rabbit IgG (negative control) shown in green.



OI-RD Scanning - Anti-SES1 antibody
 [EPR1930(2)] (ab134091)

Equilibrium disassociation constant (K_D)

Learn more about K_D

[Click here to learn more about \$K_D\$](#)

Why choose a recombinant antibody?

- Research with confidence**
Consistent and reproducible results
- Long-term and scalable supply**
Recombinant technology
- Success from the first experiment**
Confirmed specificity
- Ethical standards compliant**
Animal-free production

Anti-SES1 antibody [EPR1930(2)] (ab134091)

Please note: All products are "FOR RESEARCH USE ONLY. NOT FOR USE IN DIAGNOSTIC PROCEDURES"

Our Abpromise to you: Quality guaranteed and expert technical support

- Replacement or refund for products not performing as stated on the datasheet
- Valid for 12 months from date of delivery
- Response to your inquiry within 24 hours

- We provide support in Chinese, English, French, German, Japanese and Spanish
- Extensive multi-media technical resources to help you
- We investigate all quality concerns to ensure our products perform to the highest standards

If the product does not perform as described on this datasheet, we will offer a refund or replacement. For full details of the Abpromise, please visit <https://www.abcam.co.jp/abpromise> or contact our technical team.

Terms and conditions

- Guarantee only valid for products bought direct from Abcam or one of our authorized distributors