

Anti-Serum Amyloid P/SAP antibody [14B4] ab27313

★★★★★ [2 Abreviews](#) [5 References](#) [画像数 2](#)

製品の概要

製品名	Anti-Serum Amyloid P/SAP antibody [14B4]
製品の詳細	Mouse monoclonal [14B4] to Serum Amyloid P/SAP
由来種	Mouse
特異性	None detected so far.
アプリケーション	適用あり: Sandwich ELISA, WB, ELISA
種交差性	交差種: Human
免疫原	Full length native protein (purified) corresponding to Human Serum Amyloid P/SAP. Database link: P02743
特記事項	<p>This antibody reacts with Serum Amyloid P / SAP coated on microtitre plates.</p> <p>The Life Science industry has been in the grips of a reproducibility crisis for a number of years. Abcam is leading the way in addressing this with our range of recombinant monoclonal antibodies and knockout edited cell lines for gold-standard validation. Please check that this product meets your needs before purchasing.</p> <p>If you have any questions, special requirements or concerns, please send us an inquiry and/or contact our Support team ahead of purchase. Recommended alternatives for this product can be found below, along with publications, customer reviews and Q&As</p>

製品の特性

製品の状態	Liquid
保存方法	Shipped at 4°C. Store at +4°C.
バッファー	pH: 7.40 Preservative: 0.097% Sodium azide Constituents: 0.0268% PBS, 2.9% Sodium chloride
精製度	Protein A purified
一次抗体 備考	This antibody reacts with serum Amyloid P coated on microtitre plates. In western blots of SDS-PAGE separated serum proteins, the antibody reacts with a high molecular weight aggregate of serum Amyloid P under non reducing conditions, and reacts strongly with a 25 kDa band of the single subunits under reducing SDS-PAGE conditions.
ポリ/モノ	モノクローナル

クローン名	14B4
ミエローマ	x63-Ag8.653
アイソタイプ	IgG1
軽鎖の種類	kappa

アプリケーション

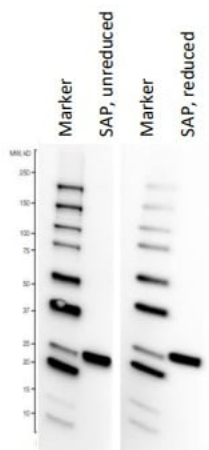
The Abpromise guarantee Abpromise保証は、次のテスト済みアプリケーションにおけるab27313の使用に適用されます
アプリケーションノートには、推奨の開始希釈率がありますが、適切な希釈率につきましてはご確認ください。

アプリケーション	Abreviews	特記事項
Sandwich ELISA		Use at an assay dependent concentration. Use as Capture antibody with recommended pair. See Abreview submitted by Jennifer Webster for details.
WB	★★★★★ (1)	Use at an assay dependent concentration.
ELISA	★★★★★ (1)	Use at an assay dependent concentration.

ターゲット情報

機能	Can interact with DNA and histones and may scavenge nuclear material released from damaged circulating cells. May also function as a calcium-dependent lectin.
組織特異性	Found in serum and urine.
関連疾患	Note=SAP is a precursor of amyloid component P which is found in basement membrane and associated with amyloid deposits.
配列類似性	Belongs to the pentaxin family. Contains 1 pentaxin domain.
翻訳後修飾	N-glycosylated with a complex biantennary oligosaccharide chain with a sialic acid at the end (disialo-SAP). Monosialo-SAP as well as asialo-SAP are also detected (PubMed:15174148).
細胞内局在	Secreted.

画像



Western blot - Anti-Serum Amyloid P/SAP antibody [14B4] (ab27313)

Lanes 2 & 4 : Anti-Serum Amyloid P/SAP antibody [14B4] (ab27313) at 2 µg/ml

Lanes 1 & 3 : molecular weight market

Lane 2 : human serum amyloid P component, unreduced at 0.2 µg

Lane 4 : human serum amyloid P component, reduced at 0.2 µg

Exposure time: 60 seconds

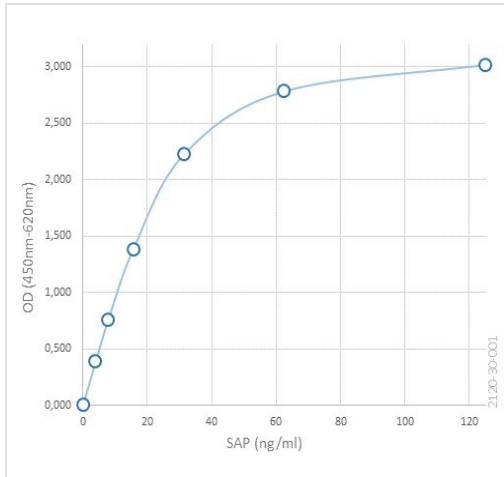
In each well of a Novex Wedge well 4-20% Tris-Glycine gel, 0.2 µg of human serum amyloid P component was loaded in a volume of 10 µL of either non-reducing or reducing loading buffer.

A nitrocellulose membrane was used for blotting. The membrane was blocked overnight in 50 mL of PBS supplemented with 0.1% BSA and 0.1% Tween 20.

The nitrocellulose membrane was incubated for 1 h with 20 mL of 2 µg/mL ab27313 Anti Serum Amyloid P component (SAP), human diluted in PBS supplemented with 0.1% BSA and 0.1% Tween 20.

After washing for 3 ×5 min in 50 mL PBS supplemented with 0.1% BSA and 0.1% Tween 20, the membrane was incubated for 1 h with rabbit anti mouse IgG diluted 1: 2000 and Streptactin-HRP diluted 1:2000 in 10 ml of PBS supplemented with 0.1% BSA and 0.1% Tween 20.

After another washing for 3 ×5 min in 50 mL PBS supplemented with 0.1% BSA and 0.1% Tween 20, the membrane was incubated for 5 min in the dark with Clarity Western ECL.



A direct ELISA was performed using SAP as the coating antigen and ab27313 at a concentration of 0.25ug/mL as the capture antibody

ELISA - Anti-Serum Amyloid P/SAP antibody [14B4]
(ab27313)

Please note: All products are "FOR RESEARCH USE ONLY. NOT FOR USE IN DIAGNOSTIC PROCEDURES"

Our Abpromise to you: Quality guaranteed and expert technical support

- Replacement or refund for products not performing as stated on the datasheet
- Valid for 12 months from date of delivery
- Response to your inquiry within 24 hours
- We provide support in Chinese, English, French, German, Japanese and Spanish
- Extensive multi-media technical resources to help you
- We investigate all quality concerns to ensure our products perform to the highest standards

If the product does not perform as described on this datasheet, we will offer a refund or replacement. For full details of the Abpromise, please visit <https://www.abcam.co.jp/abpromise> or contact our technical team.

Terms and conditions

- Guarantee only valid for products bought direct from Abcam or one of our authorized distributors