

### Anti-Serum Amyloid A antibody [115] ab687

★★★★★ [6 Abreviews](#) [8 References](#) [画像数 2](#)

#### 製品の概要

製品名	Anti-Serum Amyloid A antibody [115]
製品の詳細	Mouse monoclonal [115] to Serum Amyloid A
由来種	Mouse
アプリケーション	<b>適用あり:</b> WB, Sandwich ELISA
種交差性	<b>交差種:</b> Human
免疫原	Recombinant full length protein corresponding to Serum Amyloid A. Highly purified recombinant human serum amyloid A (MW: 12 kDa).
特記事項	<p>This product was changed from ascites to tissue culture supernatant on 6th March 2018. Please note that the dilutions may need to be adjusted accordingly. If you have any questions, please do not hesitate to contact our scientific support team.</p> <p>The Life Science industry has been in the grips of a reproducibility crisis for a number of years. Abcam is leading the way in addressing this with our range of recombinant monoclonal antibodies and knockout edited cell lines for gold-standard validation. Please check that this product meets your needs before purchasing.</p> <p>If you have any questions, special requirements or concerns, please send us an inquiry and/or contact our Support team ahead of purchase. Recommended alternatives for this product can be found below, along with publications, customer reviews and Q&amp;As</p>

#### 製品の特性

製品の状態	Liquid
保存方法	Shipped at 4°C. Upon delivery aliquot and store at -20°C or -80°C. Avoid repeated freeze / thaw cycles.
バッファー	Constituent: PBS
特記事項(精製)	Affinity purified from tissue culture supernatant.
ポリ/モノ	モノクローナル
クローン名	115
ミエローマ	unknown
アイソタイプ	IgG1
軽鎖の種類	kappa

## アプリケーション

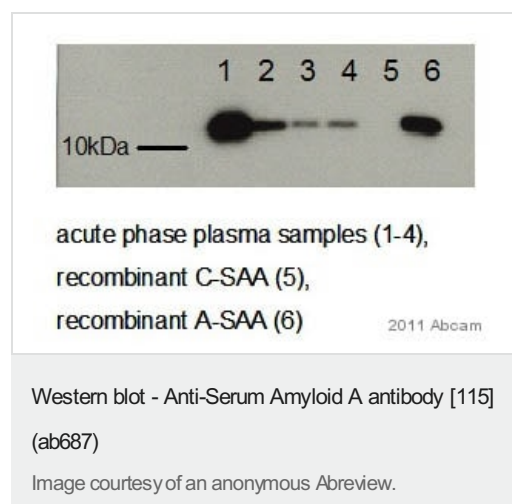
**The Abpromise guarantee** Abpromise保証は、次のテスト済みアプリケーションにおけるab687の使用に適用されます  
アプリケーションノートには、推奨の開始希釈率がありますが、適切な希釈率につきましてはご検討ください。

アプリケーション	Abreviews	特記事項
WB	★★★★★ (4)	Use at an assay dependent concentration. Use at an assay dependent dilution. This antibody, at a concentration of 0.1-0.5 µg/ml, will allow visualisation of 100 ng/lane of recombinant human SAA.
Sandwich ELISA		Use at an assay dependent concentration. sELISA compatible pair - <b>ab18711</b> .

## ターゲット情報

**関連性** Function: Major acute phase reactant. Apolipoprotein of the HDL complex. Tissue specificity: Expressed by the liver; secreted in plasma. Disease: Note=Reactive, secondary amyloidosis is characterized by the extracellular accumulation in various tissues of the SAA protein. These deposits are highly insoluble and resistant to proteolysis; they disrupt tissue structure and compromise function. Note=Elevated serum SAA protein levels may be associated with lung cancer. Similarity: Belongs to the SAA family. PTM: This protein is the precursor of amyloid protein A, which is formed by the removal of approximately 24 residues from the C-terminal end.

## 画像



**All lanes** : Anti-Serum Amyloid A antibody [115] (ab687) at 1/4000 dilution

**Lanes 1-4** : Acute phase plasma samples

**Lane 5** : Recombinant C-SAA

**Lane 6** : Recombinant A-SAA

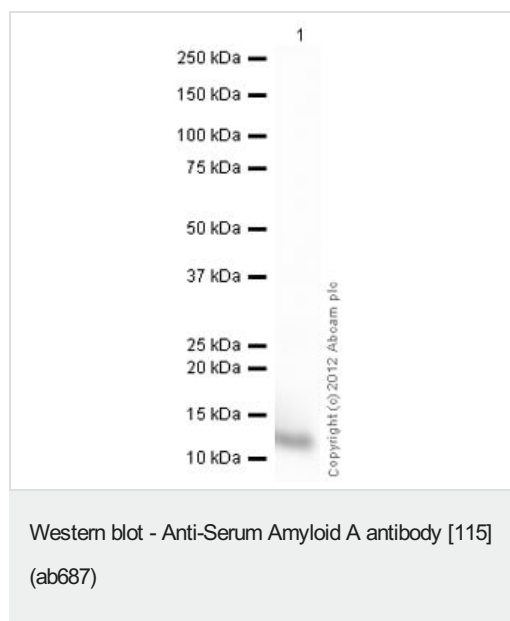
Lysates/proteins at 14 µg per lane.

### Secondary

**All lanes** : Goat anti-mouse IgG-HRP at 1/10000 dilution

Developed using the ECL technique.

**Exposure time:** 5 seconds



Anti-Serum Amyloid A antibody [115] (ab687) at 0.5 µg/ml +  
Recombinant human Serum Amyloid A (mutated D60N + H71R)  
protein ([ab50232](#)) at 0.01 µg

### Secondary

Goat Anti-Mouse IgG H&L (HRP) preadsorbed ([ab97040](#)) at  
1/5000 dilution

Developed using the ECL technique.

Performed under reducing conditions.

**Exposure time:** 1 minute

**Please note:** All products are "FOR RESEARCH USE ONLY. NOT FOR USE IN DIAGNOSTIC PROCEDURES"

### Our Abpromise to you: Quality guaranteed and expert technical support

---

- Replacement or refund for products not performing as stated on the datasheet
- Valid for 12 months from date of delivery
- Response to your inquiry within 24 hours
- We provide support in Chinese, English, French, German, Japanese and Spanish
- Extensive multi-media technical resources to help you
- We investigate all quality concerns to ensure our products perform to the highest standards

If the product does not perform as described on this datasheet, we will offer a refund or replacement. For full details of the Abpromise, please visit <https://www.abcam.co.jp/abpromise> or contact our technical team.

### Terms and conditions

---

- Guarantee only valid for products bought direct from Abcam or one of our authorized distributors