

Anti-SERPING1 antibody ab229209

2 References [画像数 4](#)

製品の概要

| | |
|--------------|---|
| 製品名 | Anti-SERPING1 antibody |
| 製品の詳細 | Rabbit polyclonal to SERPING1 |
| 由来種 | Rabbit |
| アプリケーション | 適用あり: IHC-P, WB |
| 種交差性 | 交差種: Mouse, Rat, Human |
| 免疫原 | Recombinant fragment within Human SERPING1 (internal sequence). The exact sequence is proprietary. Database link: P05155 |
| ポジティブ・コントロール | WB: Human, mouse and rat plasma. IHC-P: Human hepatoma tissue. |
| 特記事項 | <p>The Life Science industry has been in the grips of a reproducibility crisis for a number of years. Abcam is leading the way in addressing this with our range of recombinant monoclonal antibodies and knockout edited cell lines for gold-standard validation. Please check that this product meets your needs before purchasing.</p> <p>If you have any questions, special requirements or concerns, please send us an inquiry and/or contact our Support team ahead of purchase. Recommended alternatives for this product can be found below, along with publications, customer reviews and Q&As</p> |

製品の特性

| | |
|--------|---|
| 製品の状態 | Liquid |
| 保存方法 | Shipped at 4°C. Store at +4°C short term (1-2 weeks). Upon delivery aliquot. Store at -20°C long term. Avoid freeze / thaw cycle. |
| バッファー | pH: 7.00 Preservative: 0.025% Proclin 300 Constituents: 79% PBS, 20% Glycerol (glycerin, glycerine) |
| 精製度 | Immunogen affinity purified |
| ポリ/モノ | ポリクローナル |
| アイソタイプ | IgG |

アプリケーション

The Abpromise guarantee

Abpromise保証は、次のテスト済みアプリケーションにおけるab229209の使用に適用されます

アプリケーションノートには、推奨の開始希釈率がありますが、適切な希釈率につきましてはご検討ください。

| アプリケーション | Abreviews | 特記事項 |
|----------|-----------|--|
| IHC-P | | 1/100 - 1/1000. |
| WB | | 1/500 - 1/10000. Predicted molecular weight: 55 kDa. |

ターゲット情報

機能

Activation of the C1 complex is under control of the C1-inhibitor. It forms a proteolytically inactive stoichiometric complex with the C1r or C1s proteases. May play a potentially crucial role in regulating important physiological pathways including complement activation, blood coagulation, fibrinolysis and the generation of kinins. Very efficient inhibitor of FXIIa. Inhibits chymotrypsin and kallikrein.

関連疾患

Defects in SERPING1 are the cause of hereditary angioedema (HAE) [MM:106100]; also called hereditary angioneurotic edema (HANE). HAE is an autosomal dominant disorder characterized by episodic local subcutaneous edema and submucosal edema involving the upper respiratory and gastrointestinal tracts. HAE due to C1 esterase inhibitor deficiency is comprised of two clinically indistinguishable forms. In HAE type 1, representing 85% of patients, serum levels of C1 esterase inhibitor are less than 35% of normal. In HAE type 2, the levels are normal or elevated, but the protein is non-functional.

配列類似性

Belongs to the serpin family.

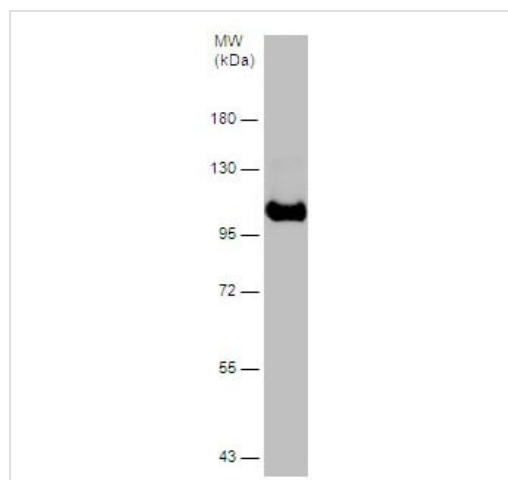
翻訳後修飾

Highly glycosylated (49%) with N- and O-glycosylation.
Can be proteolytically cleaved by E.coli stcE.

細胞内局在

Secreted.

画像

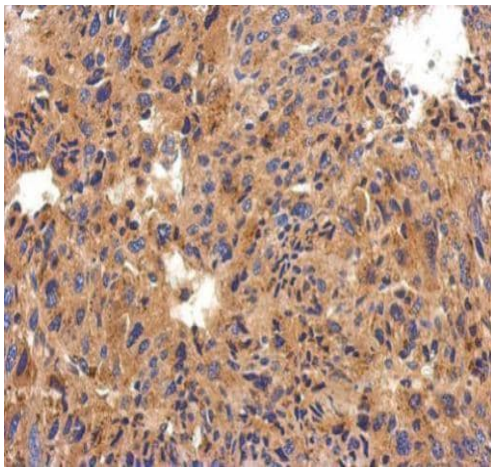


Western blot - Anti-SERPING1 antibody (ab229209)

Anti-SERPING1 antibody (ab229209) at 1/5000 dilution + Human plasma at 30 µg

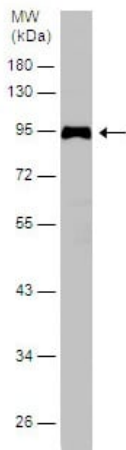
Predicted band size: 55 kDa

7.5% SDS-PAGE gel.



Paraffin-embedded human hepatoma tissue stained for SERPING1 using ab229209 at 1/500 dilution in immunohistochemical analysis.

Immunohistochemistry (Formalin/PFA-fixed paraffin-embedded sections) - Anti-SERPING1 antibody (ab229209)

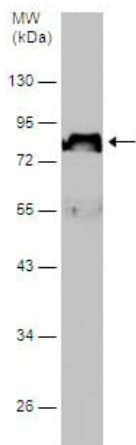


Anti-SERPING1 antibody (ab229209) at 1/1000 dilution + Mouse plasma at 50 µg

Predicted band size: 55 kDa

10% SDS-PAGE gel.

Western blot - Anti-SERPING1 antibody (ab229209)



Anti-SERPING1 antibody (ab229209) at 1/1000 dilution + Rat plasma at 50 µg

Predicted band size: 55 kDa

10% SDS-PAGE gel.

Western blot - Anti-SERPING1 antibody (ab229209)

Please note: All products are "FOR RESEARCH USE ONLY. NOT FOR USE IN DIAGNOSTIC PROCEDURES"

Our Abpromise to you: Quality guaranteed and expert technical support

- Replacement or refund for products not performing as stated on the datasheet
- Valid for 12 months from date of delivery
- Response to your inquiry within 24 hours

- We provide support in Chinese, English, French, German, Japanese and Spanish
- Extensive multi-media technical resources to help you
- We investigate all quality concerns to ensure our products perform to the highest standards

If the product does not perform as described on this datasheet, we will offer a refund or replacement. For full details of the Abpromise, please visit <https://www.abcam.co.jp/abpromise> or contact our technical team.

Terms and conditions

- Guarantee only valid for products bought direct from Abcam or one of our authorized distributors