

Anti-SerpinB2/PAI-2 antibody ab47742

★★★★★ [1 Abreviews](#) [10 References](#) [画像数 2](#)

製品の概要

製品名	Anti-SerpinB2/PAI-2 antibody
製品の詳細	Rabbit polyclonal to SerpinB2/PAI-2
由来種	Rabbit
特異性	This antibody is specific for SerpinB2/PAI-2 (but not the shorter form).
アプリケーション	適用あり: IHC-P, WB
種交差性	交差種: Human
免疫原	Synthetic peptide corresponding to Human SerpinB2/PAI-2 (N terminal).
特記事項	<p>The Life Science industry has been in the grips of a reproducibility crisis for a number of years. Abcam is leading the way in addressing this with our range of recombinant monoclonal antibodies and knockout edited cell lines for gold-standard validation. Please check that this product meets your needs before purchasing.</p> <p>If you have any questions, special requirements or concerns, please send us an inquiry and/or contact our Support team ahead of purchase. Recommended alternatives for this product can be found below, along with publications, customer reviews and Q&As</p>

製品の特性

製品の状態	Liquid
保存方法	Shipped at 4°C. Upon delivery aliquot and store at -20°C. Avoid freeze / thaw cycles.
バッファー	Preservative: 0.05% Sodium azide Constituent: 50% Glycerol
精製度	Immunogen affinity purified
ポリ/モノ	ポリクローナル
アイソタイプ	IgG

アプリケーション

The Abpromise guarantee **Abpromise保証は、** 次のテスト済みアプリケーションにおけるab47742の使用に適用されます
アプリケーションノートには、推奨の開始希釈率がありますが、適切な希釈率につきましてはご検討ください。

アプリケーション	Abreviews	特記事項
IHC-P		
WB	★★★★★ (1)	

追加情報

IHC-P: Use at a concentration of 1 µg/ml. Perform heat mediated antigen retrieval before commencing with IHC staining protocol.

WB: 1/1000 when using colorimetric substrates such as BCIP/NBT, and 1/5000 for chemiluminescent substrates. Predicted molecular weight: 46 kDa. Dilution optimised using Chromogenic detection.

Not yet tested in other applications. Optimal dilutions/concentrations should be determined by the end user.

ターゲット情報

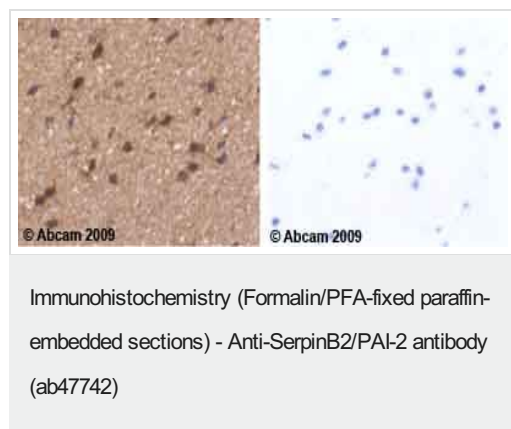
機能 Inhibits urokinase-type plasminogen activator. The monocyte derived PAI-2 is distinct from the endothelial cell-derived PAI-1.

配列類似性 Belongs to the serpin family. Ov-serpin subfamily.

翻訳後修飾 The signal sequence is not cleaved.

細胞内局在 Cytoplasm. Secreted > extracellular space.

画像

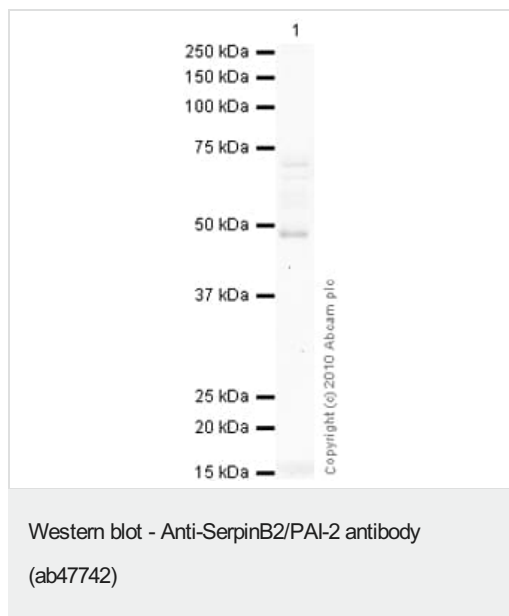


Ab47742 staining human normal temporal lobe. Staining is localized to the cytoplasm.

Left panel: with primary antibody at 1 µg/ml. Right panel: isotype control.

Sections were stained using an automated system DAKO Autostainer Plus, at room temperature. Sections were rehydrated and antigen retrieved with the Dako 3-in-1 AR buffer EDTA pH 9.0 in a DAKO PT Link. Slides were peroxidase blocked in 3% H₂O₂ in methanol for 10 minutes. They were then blocked with Dako Protein block for 10 minutes (containing casein 0.25% in PBS), then incubated with primary antibody for 20 minutes, and detected with Dako Envision Flex amplification kit for 30 minutes.

Colorimetric detection was completed with diaminobenzidine for 5 minutes. Slides were counterstained with Haematoxylin and coverslipped under DePeX. Please note that for manual staining we recommend to optimize the primary antibody concentration and incubation time (overnight incubation), and amplification may be required.



Anti-SerpinB2/PAI-2 antibody (ab47742) at 1 µg/ml + Human placenta tissue lysate - total protein (**ab29745**) at 10 µg

Secondary

Goat polyclonal to Rabbit IgG - H&L - Pre-Adsorbed (HRP) at 1/3000 dilution

Developed using the ECL technique.

Performed under reducing conditions.

Predicted band size: 46 kDa

Observed band size: 49 kDa

Additional bands at: 72 kDa. We are unsure as to the identity of these extra bands.

Exposure time: 1 minute

SerpinB2/PAI-2 contains a number of potential glycosylation sites (SwissProt) which may explain its migration at a higher molecular weight than predicted.

Please note: All products are "FOR RESEARCH USE ONLY. NOT FOR USE IN DIAGNOSTIC PROCEDURES"

Our Abpromise to you: Quality guaranteed and expert technical support

- Replacement or refund for products not performing as stated on the datasheet
- Valid for 12 months from date of delivery
- Response to your inquiry within 24 hours
- We provide support in Chinese, English, French, German, Japanese and Spanish
- Extensive multi-media technical resources to help you
- We investigate all quality concerns to ensure our products perform to the highest standards

If the product does not perform as described on this datasheet, we will offer a refund or replacement. For full details of the Abpromise, please visit <https://www.abcam.co.jp/abpromise> or contact our technical team.

Terms and conditions

- Guarantee only valid for products bought direct from Abcam or one of our authorized distributors