

Anti-SERCA1 ATPase antibody [VE121G9] - BSA and Azide free ab255956

リコンビナント

画像数 3

製品の概要

製品名	Anti-SERCA1 ATPase antibody [VE121G9] - BSA and Azide free
製品の詳細	Mouse monoclonal [VE121G9] to SERCA1 ATPase - BSA and Azide free
由来種	Mouse
特異性	Detects Sarcoplasmic or Endoplasmic Reticulum Calcium 1 (SERCA 1) ATPase.
アプリケーション	適用あり: WB, IHC-P, IHC-Fr
種交差性	交差種: Mouse, Human
免疫原	Full length native protein (purified). This information is proprietary to Abcam and/or its suppliers.
ポジティブ・コントロール	WB: Human skeletal muscle tissue lysate. IHC-P: Human, mouse and rat skeletal muscle tissue.
特記事項	<p>ab255956 is the carrier-free version of ab2819.</p> <p>This antibody clone is manufactured by Abcam. If you require a custom buffer formulation or conjugation for your experiments, please contact orders@abcam.com.</p> <p>Our carrier-free antibodies are typically supplied in a PBS-only formulation, purified and free of BSA, sodium azide and glycerol. The carrier-free buffer and high concentration allow for increased conjugation efficiency.</p> <p>This conjugation-ready format is designed for use with fluorochromes, metal isotopes, oligonucleotides, and enzymes, which makes them ideal for antibody labelling, functional and cell-based assays, flow-based assays (e.g. mass cytometry) and Multiplex Imaging applications.</p> <p>Use our conjugation kits for antibody conjugates that are ready-to-use in as little as 20 minutes with <1 minute hands-on-time and 100% antibody recovery: available for fluorescent dyes, HRP, biotin and gold.</p> <p>This product is compatible with the Maxpar[®] Antibody Labeling Kit from Fluidigm, without the need for antibody preparation. Maxpar[®] is a trademark of Fluidigm Canada Inc.</p>

製品の特性

製品の状態	Liquid
保存方法	Shipped at 4°C. Store at +4°C. Do Not Freeze.

バッファー	pH: 7.2 Constituent: PBS
キャリア・フリー	はい
精製度	Protein A purified
ポリクローナル	モノクローナル
クローン名	VE121G9
アイソタイプ	IgG1

アプリケーション

The Abpromise guarantee **Abpromise保証は、次のテスト済みアプリケーションにおけるab255956の使用に適用されます**
アプリケーションノートには、推奨の開始希釈率がありますが、適切な希釈率につきましてはご検討ください。

アプリケーション	Abreviews	特記事項
WB		Use at an assay dependent concentration. Detects a band of approximately 99 kDa (predicted molecular weight: 110 kDa).
IHC-P		Use at an assay dependent concentration.
IHC-Fr		Use at an assay dependent concentration.

ターゲット情報

機能	Key regulator of striated muscle performance by acting as the major Ca(2+) ATPase responsible for the reuptake of cytosolic Ca(2+) into the sarcoplasmic reticulum. Catalyzes the hydrolysis of ATP coupled with the translocation of calcium from the cytosol to the sarcoplasmic reticulum lumen. Contributes to calcium sequestration involved in muscular excitation/contraction.
組織特異性	Skeletal muscle, fast twitch muscle (type II) fibers.
関連疾患	Brody myopathy
配列類似性	Belongs to the cation transport ATPase (P-type) (TC 3.A.3) family. Type IIA subfamily.
発生段階	Isoform SERCA1A accounts for more than 99% of SERCA1 isoforms expressed in adult skeletal muscle, while isoform SERCA1B predominates in neo-natal skeletal muscle.
細胞内局在	Endoplasmic reticulum membrane. Sarcoplasmic reticulum membrane.

画像

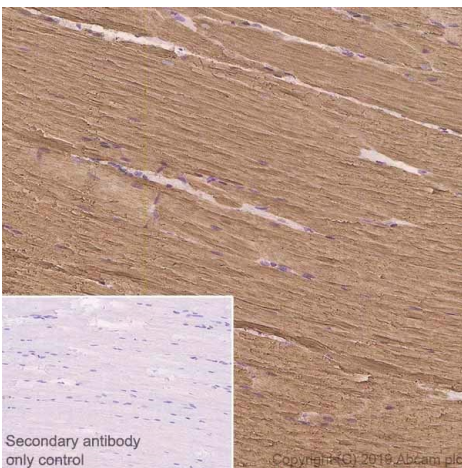


Immunohistochemistry (Formalin/PFA-fixed paraffin-embedded sections) - Anti-SERCA1 ATPase antibody [VE121G9] - BSA and Azide free (ab255956)

This image was produced using the same antibody clone but in a different formulation containing PBS, sodium azide (**ab2819**).

Immunohistochemical analysis of paraffin-embedded human skeletal muscle tissue labeling SERCA1 ATPase with ab255956 at 1/200 dilution, followed by ready to use secondary. Cytoplasmic staining on human skeletal muscle tissue is observed. The section was incubated with **ab2819** for 30 mins at RT. The immunostaining staining was performed on a Leica Biosystems BOND[®] RX instrument. Counterstained with hematoxylin.

Secondary antibody only control: Used PBS instead of primary antibody, followed by ready to use secondary.



Immunohistochemistry (Formalin/PFA-fixed paraffin-embedded sections) - Anti-SERCA1 ATPase antibody [VE121G9] - BSA and Azide free (ab255956)

This image was produced using the same antibody clone but in a different formulation containing PBS, sodium azide, (**ab2819**).

Immunohistochemical analysis of paraffin-embedded mouse skeletal muscle tissue labeling SERCA1 ATPase with ab255956 at 1/200 dilution, followed by ready to use secondary. Cytoplasmic staining on mouse skeletal muscle tissue is observed. The section was incubated with **ab2819** for 30 mins at RT. The immunostaining staining was performed on a Leica Biosystems BOND[®] RX instrument. Counterstained with hematoxylin.

Secondary antibody only control: Used PBS instead of primary antibody, followed by ready to use secondary.

Why choose a recombinant antibody?



Research with confidence
Consistent and reproducible results



Long-term and scalable supply
Recombinant technology



Success from the first experiment
Confirmed specificity



Ethical standards compliant
Animal-free production

Anti-SERCA1 ATPase antibody [VE121G9] - BSA and Azide free (ab255956)

Please note: All products are "FOR RESEARCH USE ONLY. NOT FOR USE IN DIAGNOSTIC PROCEDURES"

Our Abpromise to you: Quality guaranteed and expert technical support

- Replacement or refund for products not performing as stated on the datasheet
- Valid for 12 months from date of delivery
- Response to your inquiry within 24 hours
- We provide support in Chinese, English, French, German, Japanese and Spanish
- Extensive multi-media technical resources to help you
- We investigate all quality concerns to ensure our products perform to the highest standards

If the product does not perform as described on this datasheet, we will offer a refund or replacement. For full details of the Abpromise, please visit <https://www.abcam.co.jp/abpromise> or contact our technical team.

Terms and conditions

- Guarantee only valid for products bought direct from Abcam or one of our authorized distributors