

Anti-SEN2 antibody [EPR4356(2)] ab124724

リコンビナント RabMAb

★★★★☆ **1 Abreviews** **3 References** **画像数 4**

製品の概要

製品名	Anti-SEN2 antibody [EPR4356(2)]
製品の詳細	Rabbit monoclonal [EPR4356(2)] to SEN2
由来種	Rabbit
アプリケーション	適用あり: WB, IHC-P 適用なし: Flow Cyt or IP
種交差性	交差種: Human 非交差種: Mouse, Rat
免疫原	Synthetic peptide within Human SEN2 aa 350-450. The exact sequence is proprietary.
ポジティブ・コントロール	MDA-MB-435, NIH:OVCAR-3, and 293T cell lysates; Human colon tissue.
特記事項	This product is a recombinant monoclonal antibody, which offers several advantages including: <ul style="list-style-type: none">- High batch-to-batch consistency and reproducibility- Improved sensitivity and specificity- Long-term security of supply- Animal-free production For more information see here . Our RabMAb [®] technology is a patented hybridoma-based technology for making rabbit monoclonal antibodies. For details on our patents, please refer to RabMAb[®] patents .

製品の特性

製品の状態	Liquid
保存方法	Shipped at 4°C. Store at -20°C. Stable for 12 months at -20°C.
バッファー	pH: 7.20 Preservative: 0.05% Sodium azide Constituents: 40% Glycerol (glycerin, glycerine), 9.85% Tris glycine, 50% Tissue culture supernatant
精製度	Protein A purified
ポリ/モノ	モノクローナル
クローン名	EPR4356(2)

アプリケーション

The Abpromise guarantee **Abpromise保証は、次のテスト済みアプリケーションにおけるab124724の使用に適用されます**
アプリケーションノートには、推奨の開始希釈率がありますが、適切な希釈率につきましてはご検討ください。

アプリケーション	Abreviews	特記事項
WB		1/10000. Detects a band of approximately 68 kDa (predicted molecular weight: 68 kDa).
IHC-P		1/500 - 1/1000. Perform heat mediated antigen retrieval before commencing with IHC staining protocol.

追加情報

Is unsuitable for Flow Cyt or IP.

ターゲット情報

機能

Protease that catalyzes two essential functions in the SUMO pathway: processing of full-length SUMO1, SUMO2 and SUMO3 to their mature forms and deconjugation of SUMO1, SUMO2 and SUMO3 from targeted proteins. May down-regulate CTNNB1 levels and thereby modulate the Wnt pathway.

配列類似性

Belongs to the peptidase C48 family.

ドメイン

The N-terminus is necessary and sufficient for nuclear envelope targeting.

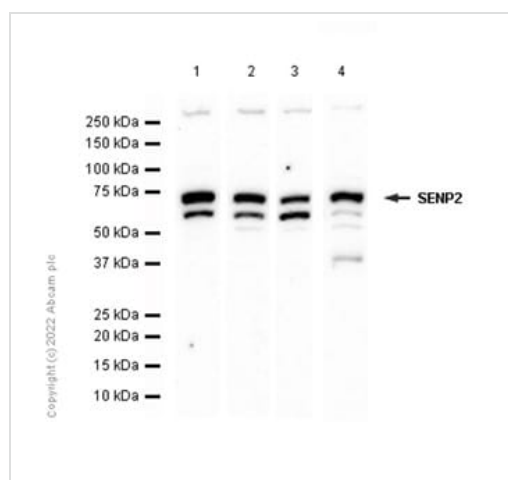
翻訳後修飾

Polyubiquitinated; which leads to proteasomal degradation.

細胞内局在

Nucleus > nuclear pore complex. Nucleus membrane. Cytoplasm. Shuttles between cytoplasm and nucleus.

画像



Western blot - Anti-SENP2 antibody [EPR4356(2)]
(ab124724)

All lanes : Anti-SENP2 antibody [EPR4356(2)] (ab124724) at
1/10000 dilution

Lane 1 : HeLa (Human cervix adenocarcinoma epithelial cell)
whole cell lysate

Lane 2 : MDA-MB-435S (Human breast adenocarcinoma epithelial
cell) whole cell lysate

Lane 3 : 293T (Human embryonic kidney epithelial cell) whole cell
lysate

Lane 4 : NIH: OVCAR-3 (Human ovary adenocarcinoma epithelial
cell) whole cell lysate

Lysates/proteins at 15 µg per lane.

Secondary

All lanes : Goat Anti-Rabbit IgG H&L (HRP) ([ab97051](#)) at 1/20000 dilution

Predicted band size: 68 kDa

Observed band size: 68 kDa

Exposure time: 40 seconds

Blocking and diluting buffer: 5% NFDm/TBST

We are not sure how to define the extra band below band of interest.

Anti-SEN2 antibody [EPR4356(2)] ([ab124724](#)) at 1/10000 dilution
+ His-tagged human SEN2 recombinant protein (aa139-523)

Secondary

Goat Anti-Rabbit IgG H&L (HRP) ([ab97051](#)) at 1/20000 dilution

Predicted band size: 68 kDa

Observed band size: 46 kDa

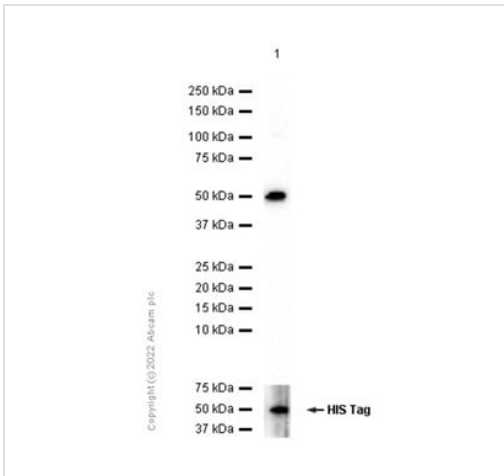
Exposure time: 20 seconds

Blocking and diluting buffer: 5% NFDm/TBST

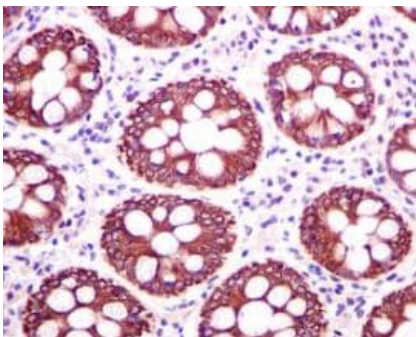
Lysate/protein at 0.01 µg per lane.

[ab124724](#), at 1/500 dilution, staining SEN2 in paraffin embedded Human colon tissue by immunohistochemistry.

Perform heat mediated antigen retrieval before commencing with IHC staining protocol.



Western blot - Anti-SEN2 antibody [EPR4356(2)] ([ab124724](#))



Immunohistochemistry (Formalin/PFA-fixed paraffin-embedded sections) - Anti-SEN2 antibody [EPR4356(2)] ([ab124724](#))

Why choose a recombinant antibody?



Research with confidence
Consistent and reproducible results



Long-term and scalable supply
Recombinant technology



Success from the first experiment
Confirmed specificity



Ethical standards compliant
Animal-free production

Anti-SEN2 antibody [EPR4356(2)] (ab124724)

Please note: All products are "FOR RESEARCH USE ONLY. NOT FOR USE IN DIAGNOSTIC PROCEDURES"

Our Abpromise to you: Quality guaranteed and expert technical support

- Replacement or refund for products not performing as stated on the datasheet
- Valid for 12 months from date of delivery
- Response to your inquiry within 24 hours
- We provide support in Chinese, English, French, German, Japanese and Spanish
- Extensive multi-media technical resources to help you
- We investigate all quality concerns to ensure our products perform to the highest standards

If the product does not perform as described on this datasheet, we will offer a refund or replacement. For full details of the Abpromise, please visit <https://www.abcam.co.jp/abpromise> or contact our technical team.

Terms and conditions

- Guarantee only valid for products bought direct from Abcam or one of our authorized distributors