


Anti-SEC62 antibody [EPR9212] ab137022

リコンビナント RabMAb[®]

3 References [画像数 4](#)

製品の概要

製品名	Anti-SEC62 antibody [EPR9212]
製品の詳細	Rabbit monoclonal [EPR9212] to SEC62
由来種	Rabbit
アプリケーション	適用あり: WB, IHC-P 適用なし: Flow Cyt or ICC/IF
種交差性	交差種: Human 交差が予測される動物種: Mouse, Rat 
免疫原	Synthetic peptide within Human SEC62 aa 1-100. The exact sequence is proprietary.
ポジティブ・コントロール	HeLa, K562, HepG2, and BxPC-3 cell lysates; Human brain and placenta tissues
特記事項	This product is a recombinant monoclonal antibody, which offers several advantages including: - High batch-to-batch consistency and reproducibility - Improved sensitivity and specificity - Long-term security of supply - Animal-free production For more information see here . Our RabMAb [®] technology is a patented hybridoma-based technology for making rabbit monoclonal antibodies. For details on our patents, please refer to RabMAb[®] patents .

製品の特性

製品の状態	Liquid
保存方法	Shipped at 4°C. Store at -20°C.
バッファー	pH: 7.2 Preservative: 0.01% Sodium azide Constituents: 9% PBS, 40% Glycerol (glycerin, glycerine), 0.05% BSA, 50% Tissue culture supernatant
精製度	Protein A purified
ポリ/モノ	モノクローナル
クローン名	EPR9212

アイソタイプ

IgG

アプリケーション

The Abpromise guarantee **Abpromise保証は、次のテスト済みアプリケーションにおけるab137022の使用に適用されず**
アプリケーションノートには、推奨の開始希釈率がありますが、適切な希釈率につきましてはご検討ください。

アプリケーション	Abreviews	特記事項
WB		1/1000 - 1/10000. Predicted molecular weight: 46 kDa.
IHC-P		1/100 - 1/250.

追加情報

Is unsuitable for Flow Cyt or ICC/IF.

ターゲット情報

機能

Required for preprotein translocation.

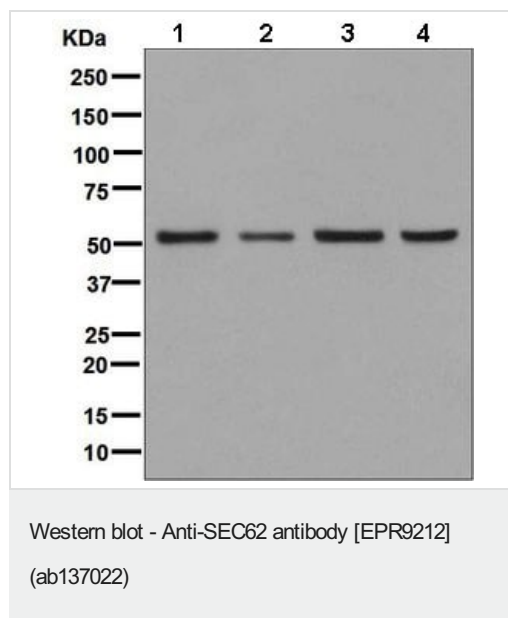
配列類似性

Belongs to the SEC62 family.

細胞内局在

Endoplasmic reticulum membrane.

画像



All lanes : Anti-SEC62 antibody [EPR9212] (ab137022) at 1/1000 dilution

Lane 1 : HeLa cell lysate

Lane 2 : K562 cell lysate

Lane 3 : HepG2 cell lysate

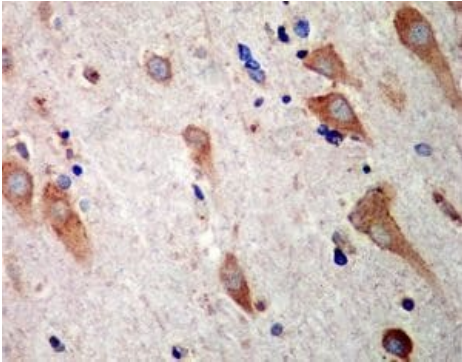
Lane 4 : BxPC-3 cell lysate

Lysates/proteins at 10 µg per lane.

Secondary

All lanes : HRP labelled goat anti-rabbit at 1/2000 dilution

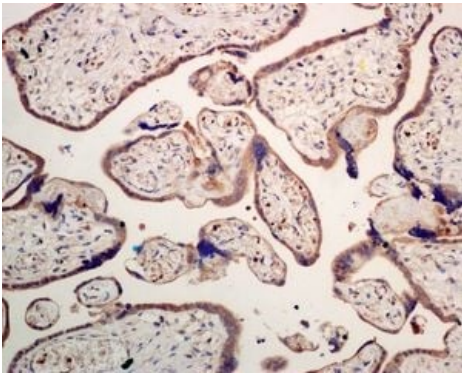
Predicted band size: 46 kDa



Immunohistochemistry (Formalin/PFA-fixed paraffin-embedded sections) - Anti-SEC62 antibody [EPR9212] (ab137022)

Immunohistochemical analysis of paraffin-embedded Human brain tissue labelling SEC62 with ab137022 at 1/100 dilution.

Perform heat mediated antigen retrieval with citrate buffer pH 6 before commencing with IHC staining protocol.



Immunohistochemistry (Formalin/PFA-fixed paraffin-embedded sections) - Anti-SEC62 antibody [EPR9212] (ab137022)

Immunohistochemical analysis of paraffin-embedded Human placenta tissue labelling SEC62 with ab137022 at 1/100 dilution.

Perform heat mediated antigen retrieval with citrate buffer pH 6 before commencing with IHC staining protocol.

Why choose a recombinant antibody?



Research with confidence
Consistent and reproducible results



Long-term and scalable supply
Recombinant technology



Success from the first experiment
Confirmed specificity



Ethical standards compliant
Animal-free production

Anti-SEC62 antibody [EPR9212] (ab137022)

Please note: All products are "FOR RESEARCH USE ONLY. NOT FOR USE IN DIAGNOSTIC PROCEDURES"

Our Abpromise to you: Quality guaranteed and expert technical support

- Replacement or refund for products not performing as stated on the datasheet
- Valid for 12 months from date of delivery
- Response to your inquiry within 24 hours
- We provide support in Chinese, English, French, German, Japanese and Spanish
- Extensive multi-media technical resources to help you
- We investigate all quality concerns to ensure our products perform to the highest standards

If the product does not perform as described on this datasheet, we will offer a refund or replacement. For full details of the Abpromise, please visit <https://www.abcam.co.jp/abpromise> or contact our technical team.

Terms and conditions

- Guarantee only valid for products bought direct from Abcam or one of our authorized distributors