


Anti-SDF1 antibody [EPR1216] - Low endotoxin, Azide free ab157772

リコンビナント RabMAb

3 References 画像数 5

製品の概要

製品名	Anti-SDF1 antibody [EPR1216] - Low endotoxin, Azide free
製品の詳細	Rabbit monoclonal [EPR1216] to SDF1 - Low endotoxin, Azide free
由来種	Rabbit
特異性	Mouse cross reactivity based on sequence analysis only. 100% sequence homology for isoforms 1-6 (P48061; isoforms 1-6). This antibody is not suitable for endogenous detection in Western blot application.
アプリケーション	適用あり: Flow Cyt (Intra), ICC/IF, WB 適用なし: IP
種交差性	交差種: Human 交差が予測される動物種: Mouse 
免疫原	Synthetic peptide. This information is proprietary to Abcam and/or its suppliers.
ポジティブ・コントロール	Flow Cyt (Intra): Jurkat cells. ICC/IF: Human PBMC cells, Jurkat cells and THP-1 cells.
特記事項	ab157772 is the carrier-free version of ab155090 .

Our **carrier-free** antibodies are typically supplied in a PBS-only formulation, purified and free of BSA, sodium azide and glycerol. The carrier-free buffer and high concentration allow for increased conjugation efficiency.

This conjugation-ready format is designed for use with fluorochromes, metal isotopes, oligonucleotides, and enzymes, which makes them ideal for antibody labelling, functional and cell-based assays, flow-based assays (e.g. mass cytometry) and Multiplex Imaging applications.

Use our **conjugation kits** for antibody conjugates that are ready-to-use in as little as 20 minutes with <1 minute hands-on-time and 100% antibody recovery: available for fluorescent dyes, HRP, biotin and gold.

This product is compatible with the Maxpar[®] Antibody Labeling Kit from Fluidigm, without the need for antibody preparation. Maxpar[®] is a trademark of Fluidigm Canada Inc.

Our RabMAb[®] technology is a patented hybridoma-based technology for making rabbit monoclonal antibodies. For details on our patents, please refer to [RabMAb[®] patents](#).

Our **Low endotoxin, azide-free formats** have low endotoxin level (≤ 1 EU/ml, determined by the

LAL assay) and are free from azide, to achieve consistent experimental results in functional assays.

製品の特性

製品の状態	Liquid
保存方法	Shipped at 4°C. Store at +4°C. Do Not Freeze.
バッファー	Constituent: PBS
キャリア・フリー	はい
精製度	Protein A purified
ポリ/モノ	モノクローナル
クローン名	EPR1216
アイソタイプ	IgG

アプリケーション

The Abpromise guarantee **Abpromise保証は、** 次のテスト済みアプリケーションにおけるab157772の使用に適用されず
アプリケーションノートには、推奨の開始希釈率がありますが、適切な希釈率につきましてはご検討ください。

アプリケーション	Abreviews	特記事項
Flow Cyt (Intra)		Use at an assay dependent concentration. ab199376 - Rabbit monoclonal IgG (Low endotoxin, Azide free), is suitable for use as an isotype control with this antibody.
ICC/IF		Use at an assay dependent concentration.
WB		Use at an assay dependent concentration.

追加情報 Is unsuitable for IP.

ターゲット情報

機能 Chemoattractant active on T-lymphocytes, monocytes, but not neutrophils. Activates the C-X-C chemokine receptor CXCR4 to induce a rapid and transient rise in the level of intracellular calcium ions and chemotaxis. Also binds to atypical chemokine receptor ACKR3, which activates the beta-arrestin pathway and acts as a scavenger receptor for SDF-1. SDF-1-beta(3-72) and SDF-1-alpha(3-67) show a reduced chemotactic activity. Binding to cell surface proteoglycans seems to inhibit formation of SDF-1-alpha(3-67) and thus to preserve activity on local sites. Acts as a positive regulator of monocyte migration and a negative regulator of monocyte adhesion via the LYN kinase. Stimulates migration of monocytes and T-lymphocytes through its receptors, CXCR4 and ACKR3, and decreases monocyte adherence to surfaces coated with ICAM-1, a ligand for beta-2 integrins. SDF1A/CXCR4 signaling axis inhibits beta-2 integrin LFA-1 mediated adhesion of monocytes to ICAM-1 through LYN kinase. Inhibits CXCR4-mediated infection by T-cell line-adapted HIV-1. Plays a protective role after myocardial infarction. Induces down-regulation and internalization of ACKR3 expressed in various cells. Has several critical functions during embryonic development; required for B-cell lymphopoiesis, myelopoiesis in bone marrow

and heart ventricular septum formation.

組織特異性

Isoform Alpha and isoform Beta are ubiquitously expressed, with highest levels detected in liver, pancreas and spleen. Isoform Gamma is mainly expressed in heart, with weak expression detected in several other tissues. Isoform Delta, isoform Epsilon and isoform Theta have highest expression levels in pancreas, with lower levels detected in heart, kidney, liver and spleen.

配列類似性

Belongs to the intercrine alpha (chemokine CxC) family.

発生段階

Isoform Alpha is ubiquitously expressed in fetal tissues. Isoform Beta and isoform Delta have more limited expression patterns, with highest levels detected in fetal spleen and fetal liver, respectively. Isoform Gamma and isoform Theta are weakly detected in fetal kidney.

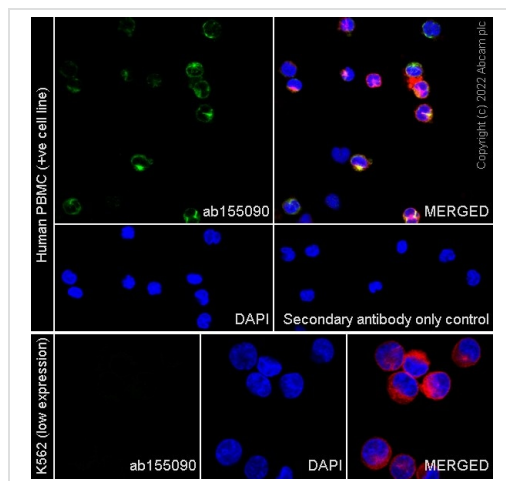
翻訳後修飾

Processed forms SDF-1-beta(3-72) and SDF-1-alpha(3-67) are produced after secretion by proteolytic cleavage of isoforms Beta and Alpha, respectively. The N-terminal processing is probably achieved by DPP4. Isoform Alpha is first cleaved at the C-terminus to yield a SDF-1-alpha(1-67) intermediate before being processed at the N-terminus. The C-terminal processing of isoform Alpha is reduced by binding to heparin and, probably, cell surface proteoglycans.

細胞内局在

Secreted.

画像

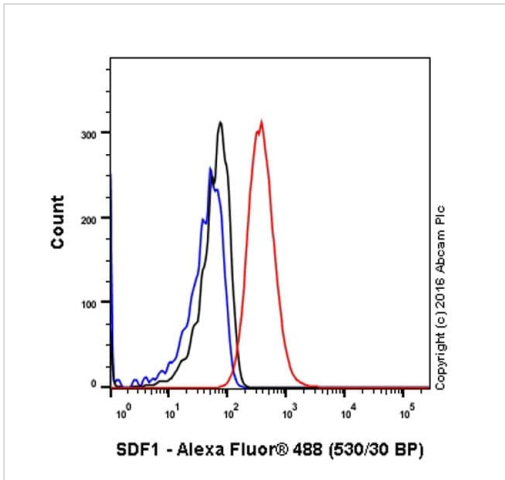


Immunocytochemistry/ Immunofluorescence - Anti-SDF1 antibody [EPR1216] - Low endotoxin, Azide free (ab157772)

Immunofluorescent analysis of 4% paraformaldehyde-fixed, 0.1% Triton X-100 permeabilized Human PBMC (Human primary peripheral blood mononuclear cell) cells labelling SDF1 with primary antibody anti-SDF1 ([ab155090](#)) at 1/100 dilution, followed by Alexa Fluor® 488 Goat anti-Rabbit secondary ([ab150077](#)) secondary antibody at 1/1000 dilution. Anti-alpha Tubulin antibody (DM1A) - Microtubule Marker (Alexa Fluor® 594) ([ab195889](#)) was used to counterstain tubulin at 1/200 dilution. The nuclear counter stain is DAPI (blue). Confocal image showing cytoplasmic staining in Human PBMC. Image was taken with a confocal microscope (Leica-Microsystems, TCS SP8).

Low expression control: K562 (PMID: 23473997)

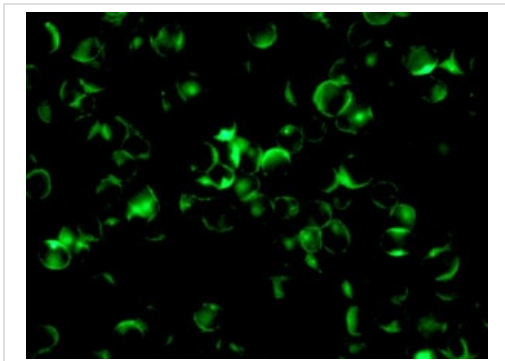
This data was developed using the same antibody clone in a different buffer formulation containing PBS, BSA, glycerol, and sodium azide ([ab155090](#)).



Flow Cytometry (Intracellular) - Anti-SDF1 antibody [EPR1216] - Low endotoxin, Azide free (ab157772)

Intracellular Flow Cytometry analysis of Jurkat (human acute T cell leukemia) cells labeling SDF1 with purified **ab155090** at 1/20 dilution (10ug/ml) (red). Cells were fixed with 4% paraformaldehyde and permeabilised with 90% methanol. A Goat anti rabbit IgG (Alexa Fluor® 488) (1/2000 dilution) was used as the secondary antibody. Rabbit monoclonal IgG (Black) was used as the isotype control, cells without incubation with primary antibody and secondary antibody (Blue) was used as the unlabeled control.

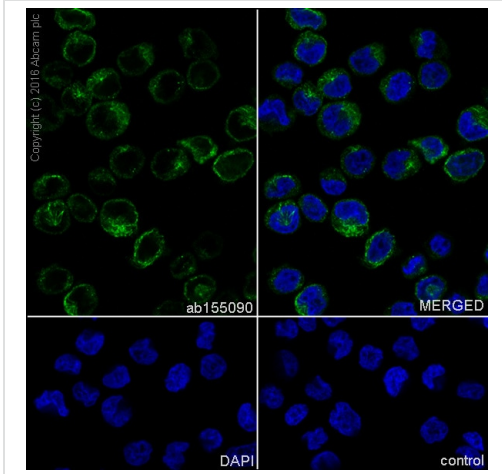
This data was developed using the same antibody clone in a different buffer formulation containing PBS, BSA, glycerol, and sodium azide (**ab155090**).



Immunocytochemistry/ Immunofluorescence - Anti-SDF1 antibody [EPR1216] - Low endotoxin, Azide free (ab157772)

This ICC data was generated using the same anti-SDF1 antibody clone, EPR1216, in a different buffer formulation (cat# **ab155090**).

Immunofluorescent analysis of Jurkat cells, labeling SDF1 with **ab155090** at 1/100 dilution.






This ICC data was generated using the same anti-SDF1 antibody clone, EPR1216, in a different buffer formulation (cat# **ab155090**).

Immunocytochemistry/Immunofluorescence analysis of THP-1 (Human monocytic leukemia cell line) labeling SDF1 with Purified **ab155090** at 1/500 dilution (5 µg/ml). Cells were fixed with 4% PFA and permeabilized with 0.1% tritonX-100. **ab150077** Goat anti rabbit IgG(Alexa Fluor® 488) at 1/1000 dilution was used as the secondary antibody. Nuclei were counterstained with DAPI. PBS was used instead of the primary antibody as the negative control.

Immunocytochemistry/ Immunofluorescence - Anti-SDF1 antibody [EPR1216] - Low endotoxin, Azide free (ab157772)

Why choose a recombinant antibody?

 Research with confidence Consistent and reproducible results	 Long-term and scalable supply Recombinant technology
 Success from the first experiment Confirmed specificity	 Ethical standards compliant Animal-free production

Anti-SDF1 antibody [EPR1216] - Low endotoxin, Azide free (ab157772)

Please note: All products are "FOR RESEARCH USE ONLY. NOT FOR USE IN DIAGNOSTIC PROCEDURES"

Our Abpromise to you: Quality guaranteed and expert technical support

- Replacement or refund for products not performing as stated on the datasheet
- Valid for 12 months from date of delivery

- Response to your inquiry within 24 hours
- We provide support in Chinese, English, French, German, Japanese and Spanish
- Extensive multi-media technical resources to help you
- We investigate all quality concerns to ensure our products perform to the highest standards

If the product does not perform as described on this datasheet, we will offer a refund or replacement. For full details of the Abpromise, please visit <https://www.abcam.co.jp/abpromise> or contact our technical team.

Terms and conditions

- Guarantee only valid for products bought direct from Abcam or one of our authorized distributors