

# Anti-SCRN1 antibody ab105355

**1 References** [画像数 3](#)

### 製品の概要

製品名	Anti-SCRN1 antibody
製品の詳細	Rabbit polyclonal to SCR N1
由来種	Rabbit
アプリケーション	<b>適用あり:</b> ICC/IF, WB, IHC-P
種交差性	<b>交差種:</b> Human
免疫原	20 amino acid synthetic peptide to a region within the C-terminus of Human SCR N1 (NP_001138985).
ポジティブ・コントロール	Human kidney tissue
特記事項	<p>The Life Science industry has been in the grips of a reproducibility crisis for a number of years. Abcam is leading the way in addressing this with our range of recombinant monoclonal antibodies and knockout edited cell lines for gold-standard validation. Please check that this product meets your needs before purchasing.</p> <p>If you have any questions, special requirements or concerns, please send us an inquiry and/or contact our Support team ahead of purchase. Recommended alternatives for this product can be found below, along with publications, customer reviews and Q&amp;As</p>

### 製品の特性

製品の状態	Liquid
保存方法	Shipped at 4°C. Store at 4°C (stable for up to 12 months). Store at -20°C or -80°C.
バッファー	pH: 7.2 Preservative: 0.02% Sodium azide Constituent: PBS
精製度	Immunogen affinity purified
ポリ/モノ	ポリクローナル
アイソタイプ	IgG

### アプリケーション

The Abpromise guarantee

**Abpromise保証は、** 次のテスト済みアプリケーションにおけるab105355の使用に適用されます

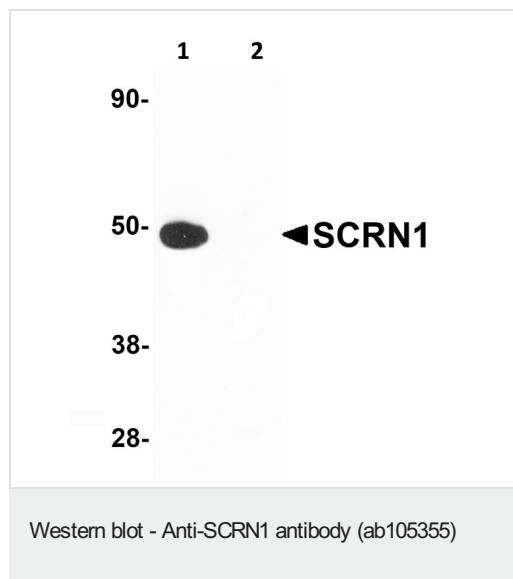
アプリケーションノートには、推奨の開始希釈率がありますが、適切な希釈率につきましてはご確認ください。

アプリケーション	Abreviews	特記事項
ICC/IF		Use a concentration of 20 µg/ml.
WB		Use a concentration of 1 - 2 µg/ml. Predicted molecular weight: 46 kDa.
IHC-P		Use a concentration of 5 µg/ml.

## ターゲット情報

機能	Regulates exocytosis in mast cells. Increases both the extent of secretion and the sensitivity of mast cells to stimulation with calcium.
配列類似性	Belongs to the peptidase C69 family. Secernin subfamily.
細胞内局在	Cytoplasm.

## 画像



**All lanes :** Anti-SCRN1 antibody (ab105355) at 1 µg/ml

**Lane 1 :** Human kidney tissue lysate in the absence of blocking peptide

**Lane 2 :** Human kidney tissue lysate in the presence of blocking peptide

**Predicted band size:** 46 kDa



ab105355, at 5ug/ml, staining SCR1 in Human kidney tissue by immunohistochemistry.

Immunocytochemistry/ Immunofluorescence - Anti-  
SCRN1 antibody (ab105355)

Immunofluorescence of SCRN1 in Human Kidney cells using  
ab105355 at 20 ug/ml.

**Please note:** All products are "FOR RESEARCH USE ONLY. NOT FOR USE IN DIAGNOSTIC PROCEDURES"

### Our Abpromise to you: Quality guaranteed and expert technical support

---

- Replacement or refund for products not performing as stated on the datasheet
- Valid for 12 months from date of delivery
- Response to your inquiry within 24 hours
- We provide support in Chinese, English, French, German, Japanese and Spanish
- Extensive multi-media technical resources to help you
- We investigate all quality concerns to ensure our products perform to the highest standards

If the product does not perform as described on this datasheet, we will offer a refund or replacement. For full details of the Abpromise, please visit <https://www.abcam.co.jp/abpromise> or contact our technical team.

### Terms and conditions

---

- Guarantee only valid for products bought direct from Abcam or one of our authorized distributors