

### Anti-SCP1 antibody ab15090

★★★★★ [3 Abreviews](#) [102 References](#) [画像数 2](#)

#### 製品の概要

---

製品名	Anti-SCP1 antibody
製品の詳細	Rabbit polyclonal to SCP1
由来種	Rabbit
アプリケーション	<b>適用あり:</b> IHC-Fr, IHC-P, ICC/IF
種交差性	<b>交差種:</b> Mouse
免疫原	Synthetic peptide corresponding to Mouse SCP1 (C terminal). Database link: <a href="#">Q62209</a>

#### 特記事項

The Life Science industry has been in the grips of a reproducibility crisis for a number of years. Abcam is leading the way in addressing this with our range of recombinant monoclonal antibodies and knockout edited cell lines for gold-standard validation. Please check that this product meets your needs before purchasing.

If you have any questions, special requirements or concerns, please send us an inquiry and/or contact our Support team ahead of purchase. Recommended alternatives for this product can be found below, along with publications, customer reviews and Q&As

#### 製品の特性

---

製品の状態	Liquid
保存方法	Shipped at 4°C. Store at +4°C short term (1-2 weeks). Store at -20°C or -80°C. Avoid freeze / thaw cycle.
バッファー	pH: 7.4 Preservative: 0.1% Sodium azide Constituent: Tris citrate/phosphate
精製度	Immunogen affinity purified
ポリ/モノ	ポリクローナル
アイソタイプ	IgG

#### アプリケーション

---

The Abpromise guarantee

**Abpromise保証は、次のテスト済みアプリケーションにおけるab15090の使用に適用されます**

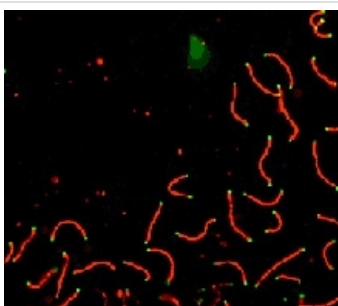
アプリケーションノートには、推奨の開始希釈率がありますが、適切な希釈率につきましてはご確認ください。

アプリケーション	Abreviews	特記事項
IHC-Fr	★★★★★ (1)	Use at an assay dependent concentration.
IHC-P	★★★☆☆ (1)	1/750.
ICC/IF	★★★★★ (1)	1/100 - 1/750.

## ターゲット情報

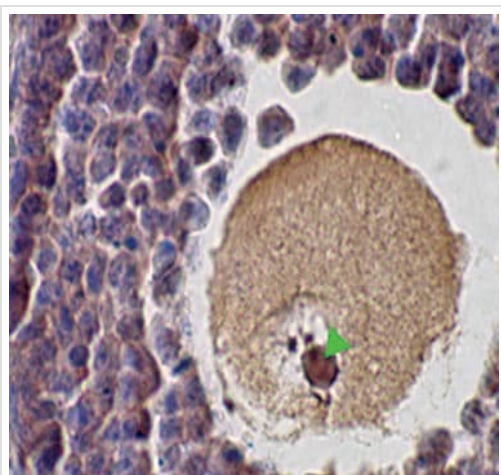
機能	Major component of the transverse filaments of synaptonemal complexes (SCS), formed between homologous chromosomes during meiotic prophase.
組織特異性	Testis.
ドメイン	Consists of an alpha-helical stretch of 700 AA residues, flanked by N- and C-terminal globular domains. The C-terminal domain has DNA-binding capacity.
細胞内局在	Nucleus. Chromosome. In tripartite segments of synaptonemal complexes, between lateral elements in the nucleus. Found only where the chromosome cores are synapsed. Its N-terminus is found towards the center of the synaptonemal complex while the C-terminus extends well into the lateral domain of the synaptonemal complex.

## 画像



SCP1 labeled in mouse pachytene preparation (red), using ab15090. CDK2 staining, near telomeres, is also present (green).

Immunocytochemistry/ Immunofluorescence - Anti-SCP1 antibody (ab15090)



Paraffin embedded IHC image of Murine SCP1 in mouse ovary using ab15090 at 1:750 dilution and secondary at 1:400.

Immunohistochemistry (Formalin/PFA-fixed paraffin-embedded sections) - Anti-SCP1 antibody (ab15090)

**Please note:** All products are "FOR RESEARCH USE ONLY. NOT FOR USE IN DIAGNOSTIC PROCEDURES"

### **Our Abpromise to you: Quality guaranteed and expert technical support**

---

- Replacement or refund for products not performing as stated on the datasheet
- Valid for 12 months from date of delivery
- Response to your inquiry within 24 hours
  
- We provide support in Chinese, English, French, German, Japanese and Spanish
- Extensive multi-media technical resources to help you
- We investigate all quality concerns to ensure our products perform to the highest standards

If the product does not perform as described on this datasheet, we will offer a refund or replacement. For full details of the Abpromise, please visit <https://www.abcam.co.jp/abpromise> or contact our technical team.

### **Terms and conditions**

---

- Guarantee only valid for products bought direct from Abcam or one of our authorized distributors