

Anti-SCGN/Secretagogin antibody ab111871

3 References [画像数 2](#)

医薬用外劇物

製品の概要

| | |
|--------------|---|
| 製品名 | Anti-SCGN/Secretagogin antibody |
| 製品の詳細 | Rabbit polyclonal to SCGN/Secretagogin |
| 由来種 | Rabbit |
| アプリケーション | 適用あり: WB, ICC/IF |
| 種交差性 | 交差種: Human 交差が予測される動物種: Mouse, Rat, Cow  |
| 免疫原 | Recombinant fragment corresponding to Human SCGN/Secretagogin aa 57-238. (AAH00336) |
| ポジティブ・コントロール | HeLa and HCT116 cells and whole cell lysates. |
| 特記事項 | <p>The Life Science industry has been in the grips of a reproducibility crisis for a number of years. Abcam is leading the way in addressing this with our range of recombinant monoclonal antibodies and knockout edited cell lines for gold-standard validation. Please check that this product meets your needs before purchasing.</p> <p>If you have any questions, special requirements or concerns, please send us an inquiry and/or contact our Support team ahead of purchase. Recommended alternatives for this product can be found below, along with publications, customer reviews and Q&As</p> |

製品の特性

| | |
|----------|--|
| 製品の状態 | Liquid |
| 保存方法 | Shipped at 4°C. Upon delivery aliquot and store at -20°C or -80°C. Avoid repeated freeze / thaw cycles. |
| バッファー | pH: 7.00 Preservative: 0.01% Thimerosal (merthiolate) Constituents: 78.99% PBS, 1% BSA, 20% Glycerol (glycerin, glycerine) |
| 精製度 | Immunogen affinity purified |
| 特記事項(精製) | ab111871 is purified by antigen-affinity chromatography. |
| ポリ/モノ | ポリクローナル |
| アイソタイプ | IgG |

アプリケーション

The Abpromise guarantee

Abpromise保証は、次のテスト済みアプリケーションにおけるab111871の使用に適用されます

アプリケーションノートには、推奨の開始希釈率がありますが、適切な希釈率につきましてはご確認ください。

| アプリケーション | Abreviews | 特記事項 |
|----------|-----------|---|
| WB | | 1/500 - 1/3000. Predicted molecular weight: 32 kDa. |
| ICC/IF | | 1/100 - 1/500. |

ターゲット情報

組織特異性

Expressed at high levels in the pancreatic islets of Langerhans and to a much lesser extent in the gastrointestinal tract (stomach, small intestine and colon), the adrenal medulla and cortex and the thyroid C-cells. In the brain, the expression is restricted to distinct subtypes of neurons with highest expression in the molecular layer of the cerebellum (stellate and basket cells), in the anterior part of the pituitary gland, in the thalamus, in the hypothalamus and in a subgroup of neocortical neurons.

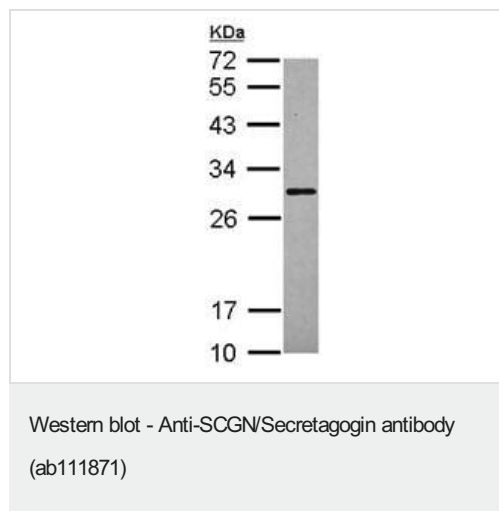
配列類似性

Contains 6 EF-hand domains.

細胞内局在

Cytoplasm. Secreted. Cytoplasmic vesicle > secretory vesicle membrane. Predominantly cytoplasmic. A small proportion is associated with secretory granules and membrane fractions (By similarity). Detectable in human serum after ischemic neuronal damage.

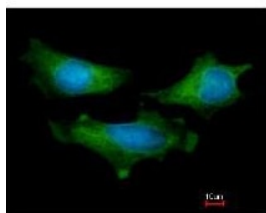
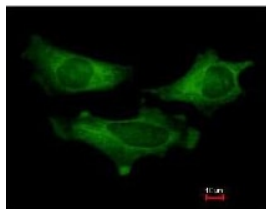
画像



Anti-SCGN/Secretagogin antibody (ab111871) at 1/1000 dilution +
HeLa whole cell lysate at 30 µg

Predicted band size: 32 kDa

12% SDS PAGE



ab111871 at 1/200 dilution staining SCGN/Secretagogen in methanol-fixed HeLa cells by Immunofluorescence. The lower image is costained with Hoechst 33342.

Immunocytochemistry/ Immunofluorescence - Anti-SCGN/Secretagogen antibody (ab111871)

Please note: All products are "FOR RESEARCH USE ONLY. NOT FOR USE IN DIAGNOSTIC PROCEDURES"

Our Abpromise to you: Quality guaranteed and expert technical support

- Replacement or refund for products not performing as stated on the datasheet
- Valid for 12 months from date of delivery
- Response to your inquiry within 24 hours
- We provide support in Chinese, English, French, German, Japanese and Spanish
- Extensive multi-media technical resources to help you
- We investigate all quality concerns to ensure our products perform to the highest standards

If the product does not perform as described on this datasheet, we will offer a refund or replacement. For full details of the Abpromise, please visit <https://www.abcam.co.jp/abpromise> or contact our technical team.

Terms and conditions

- Guarantee only valid for products bought direct from Abcam or one of our authorized distributors