


Anti-SCAMP5 antibody ab3432

★★★★☆ [2 Abreviews](#) [3 References](#) [画像数 1](#)

製品の概要

製品名	Anti-SCAMP5 antibody
製品の詳細	Rabbit polyclonal to SCAMP5
由来種	Rabbit
アプリケーション	適用あり: WB
種交差性	交差種: Rat 交差が予測される動物種: Mouse, Human 
免疫原	Synthetic peptide corresponding to Rat SCAMP5 aa 217-233. Sequence: NQPQTQYSATPNYTYSN (Peptide available as ab4971)

 [Run BLAST with](#)

 [Run BLAST with](#)

特記事項

The Life Science industry has been in the grips of a reproducibility crisis for a number of years. Abcam is leading the way in addressing this with our range of recombinant monoclonal antibodies and knockout edited cell lines for gold-standard validation. Please check that this product meets your needs before purchasing.

If you have any questions, special requirements or concerns, please send us an inquiry and/or contact our Support team ahead of purchase. Recommended alternatives for this product can be found below, along with publications, customer reviews and Q&As

製品の特性

製品の状態	Liquid
保存方法	Shipped at 4°C. Store at +4°C short term (1-2 weeks). Upon delivery aliquot. Store at -20°C or -80°C. Avoid freeze / thaw cycle.
バッファー	Preservative: 0.05% Sodium azide Constituents: 0.1% BSA, 99% PBS
精製度	Immunogen affinity purified
ポリ/モノ	ポリクローナル
アイソタイプ	IgG

アプリケーション

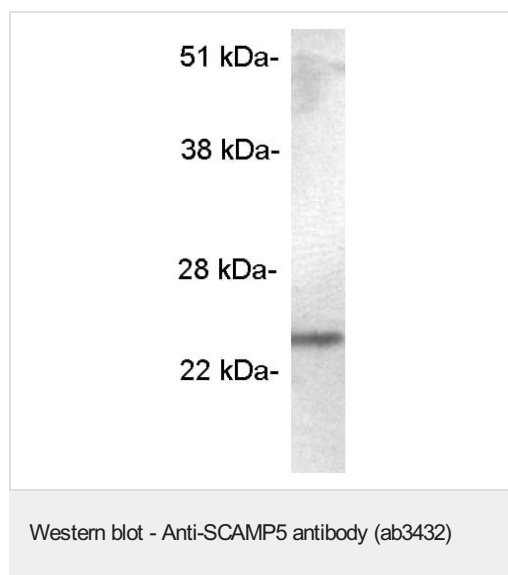
The Abpromise guarantee **Abpromise保証は、次のテスト済みアプリケーションにおけるab3432の使用に適用されます**
アプリケーションノートには、推奨の開始希釈率がありますが、適切な希釈率につきましてはご検討ください。

アプリケーション	Abreviews	特記事項
WB	★★★★☆ (2)	Use a concentration of 2 µg/ml. Detects a band of approximately 25 kDa.

ターゲット情報

機能	Required for the calcium-dependent exocytosis of signal sequence-containing cytokines such as CCL5. Probably acts in cooperation with the SNARE machinery. May play a role in accumulation of expanded polyglutamine (polyQ) protein huntingtin (HTT) in case of endoplasmic reticulum stress by inhibiting the endocytosis pathway.
組織特異性	Expressed both by neuronal and nonneuronal tissues. Expressed in brain, stomach, thyroid, spinal cord, lymph node, trachea, adrenal gland, bone marrow and in the different parts of brain. In thyroid tissues, it is expressed by the follicular epithelial cells. In the adrenal gland tissues it is detected in the zona fasciculata of the cortex region (at protein level).
配列類似性	Belongs to the SCAMP family. SCAMP5 subfamily.
細胞内局在	Cell membrane. Golgi apparatus membrane. Golgi apparatus > trans-Golgi network membrane. Recycling endosome membrane. Cytoplasmic vesicle > secretory vesicle > synaptic vesicle membrane. Mainly localizes in Golgi apparatus membrane. Upon calcium-triggered exocytosis, it translocates to the cell membrane. Highly enriched in synaptic vesicles.

画像



Anti-SCAMP5 antibody (ab3432) + Rat brain extract

Observed band size: 25 kDa

Please note: All products are "FOR RESEARCH USE ONLY. NOT FOR USE IN DIAGNOSTIC PROCEDURES"

Our Abpromise to you: Quality guaranteed and expert technical support

- Replacement or refund for products not performing as stated on the datasheet
- Valid for 12 months from date of delivery
- Response to your inquiry within 24 hours

- We provide support in Chinese, English, French, German, Japanese and Spanish
- Extensive multi-media technical resources to help you
- We investigate all quality concerns to ensure our products perform to the highest standards

If the product does not perform as described on this datasheet, we will offer a refund or replacement. For full details of the Abpromise, please visit <https://www.abcam.co.jp/abpromise> or contact our technical team.

Terms and conditions

- Guarantee only valid for products bought direct from Abcam or one of our authorized distributors