

Anti-SC35 antibody [EPR12238] ab204916

リコンビナント **RabMAb**

★★★★☆ **2 Abreviews** **12 References** 画像数 11

製品の概要

製品名	Anti-SC35 antibody [EPR12238]
製品の詳細	Rabbit monoclonal [EPR12238] to SC35
由来種	Rabbit
アプリケーション	適用あり: Flow Cyt (Intra), ICC/IF, IP, IHC-P, WB
種交差性	交差種: Human
免疫原	Synthetic peptide. This information is proprietary to Abcam and/or its suppliers.
ポジティブ・コントロール	WB: K562, HeLa, 293 and HepG2 cell lysates; Human thymus, fetal kidney and fetal brain lysates. IHC-P: Human cervical carcinoma tissue. ICC/IF: HEK-293 and HeLa cells. IP: HeLa whole cell lysate.
特記事項	<p>This product is a recombinant monoclonal antibody, which offers several advantages including:</p> <ul style="list-style-type: none"> - High batch-to-batch consistency and reproducibility - Improved sensitivity and specificity - Long-term security of supply - Animal-free production <p>For more information see here.</p> <p>Our RabMAb[®] technology is a patented hybridoma-based technology for making rabbit monoclonal antibodies. For details on our patents, please refer to RabMAb[®] patents.</p>

製品の特性

製品の状態	Liquid
保存方法	Shipped at 4°C. Store at +4°C short term (1-2 weeks). Upon delivery aliquot. Store at -20°C long term. Avoid freeze / thaw cycle.
バッファー	<p>pH: 7.2</p> <p>Preservative: 0.01% Sodium azide</p> <p>Constituents: PBS, 40% Glycerol (glycerin, glycerine), 0.05% BSA</p>
精製度	Protein A purified
ポリ/モノ	モノクローナル
クローン名	EPR12238

アプリケーション

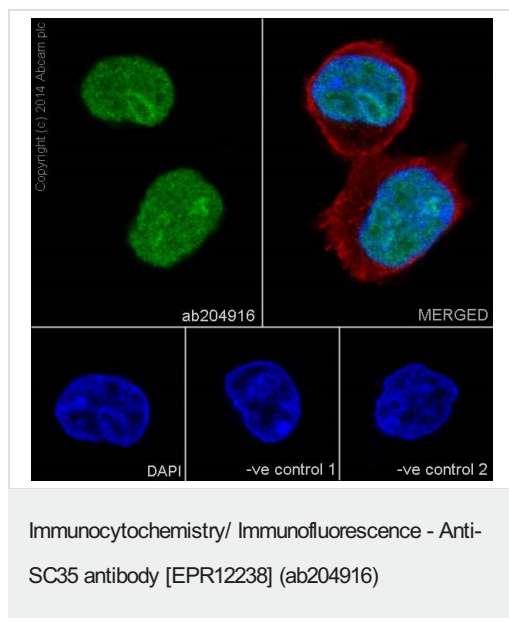
The Abpromise guarantee **Abpromise保証は、**次のテスト済みアプリケーションにおけるab204916の使用に適用されます
アプリケーションノートには、推奨の開始希釈率がありますが、適切な希釈率につきましてはご検討ください。

アプリケーション	Abreviews	特記事項
Flow Cyt (Intra)		1/400.
ICC/IF	★★★★★ (1)	1/100.
IP		1/30.
IHC-P		1/1000. Perform heat mediated antigen retrieval with Tris/EDTA buffer pH 9.0 before commencing with IHC staining protocol.
WB	★★★★★ (1)	1/1000. Detects a band of approximately 35 kDa (predicted molecular weight: 25 kDa).

ターゲット情報

機能	Necessary for the splicing of pre-mRNA. It is required for formation of the earliest ATP-dependent splicing complex and interacts with spliceosomal components bound to both the 5'- and 3'-splice sites during spliceosome assembly. It also is required for ATP-dependent interactions of both U1 and U2 snRNPs with pre-mRNA. Interacts with other spliceosomal components, via the RS domains, to form a bridge between the 5'- and 3'-splice site binding components, U1 snRNP and U2AF. Binds to purine-rich RNA sequences, either 5'-AGSAGAGTA-3' (S=C or G) or 5'-GTTCGAGTA-3'. Can bind to beta-globin mRNA and commit it to the splicing pathway.
配列類似性	Belongs to the splicing factor SR family. Contains 1 RRM (RNA recognition motif) domain.
翻訳後修飾	Extensively phosphorylated on serine residues in the RS domain.
細胞内局在	Nucleus.

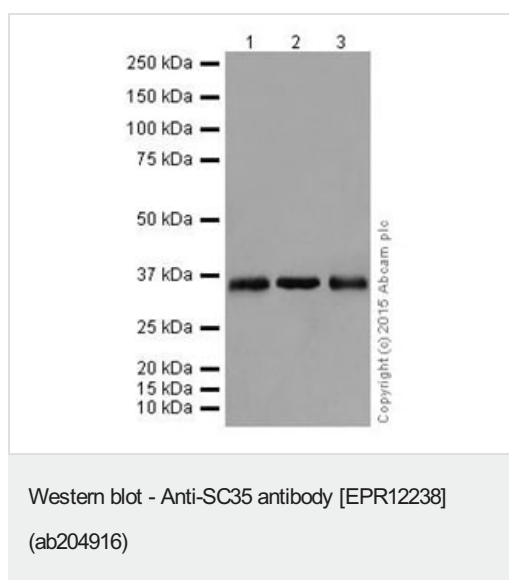
画像



Immunofluorescent analysis of 4% paraformaldehyde-fixed, 0.1% Triton X-100 permeabilized HEK-293 (Human epithelial cells from embryonic kidney) cells labeling SC35 with ab204916 at 1/100 dilution, followed by Goat anti-rabbit IgG (Alexa Fluor® 488) (**ab150077**) secondary antibody at 1/1000 dilution (green). Confocal image showing nuclear staining on HEK-293 cell line. The nuclear counter stain is DAPI (blue). Tubulin is detected with **ab7291** (anti-Tubulin mouse mAb) at 1/1000 dilution and **ab150120** (AlexaFluor®594 Goat anti-Mouse secondary) at 1/1000 dilution (red).

The negative controls are as follows:

-ve control 1: ab204916 at 1/250 dilution followed by **ab150120** (AlexaFluor®594 Goat anti-Mouse secondary) at 1/1000 dilution.
-ve control 2: **ab7291** (anti-Tubulin mouse mAb) at 1/1000 dilution followed by **ab150077** (Alexa Fluor®488 Goat Anti-Rabbit IgG H&L) at 1/1000 dilution.



All lanes : Anti-SC35 antibody [EPR12238] (ab204916) at 1/1000 dilution

Lane 1 : K562 (Human chronic myelogenous leukemia cells from bone marrow) whole cell lysate

Lane 2 : HeLa (Human epithelial cells from cervix adenocarcinoma) whole cell lysate

Lane 3 : 293 (Human epithelial cells from embryonic kidney) whole cell lysate

Lysates/proteins at 20 µg per lane.

Secondary

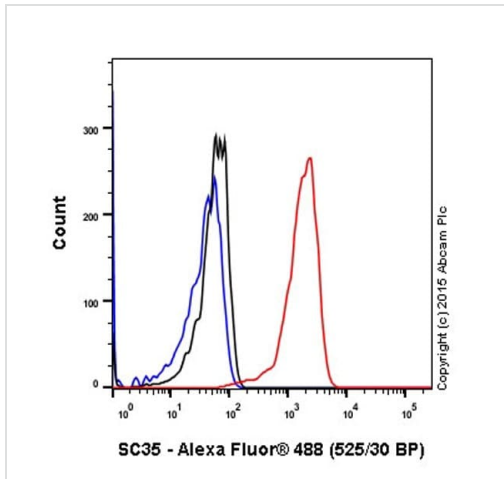
All lanes : Goat Anti-Rabbit IgG, (H+L), Peroxidase conjugated at 1/1000 dilution

Predicted band size: 25 kDa

Observed band size: 35 kDa

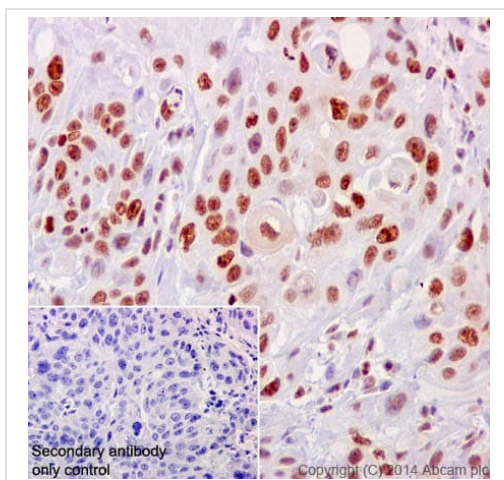
Exposure time: 10 seconds

Blocking/Dilution buffer: 5% NFDM/TBST.



Flow Cytometry (Intracellular) - Anti-SC35 antibody
[EPR12238] (ab204916)

Intracellular flow cytometric analysis of 4% paraformaldehyde fixed 90% methanol permeabilized HeLa (Human cervix adenocarcinoma epithelial cell) cells labelling SC35 with ab204916 at 1/400 dilution (0.1 µg)/ Red compared with a Rabbit monoclonal IgG (**ab172730**) / Black isotype control and an unlabelled control (cells without incubation with primary antibody and secondary antibody) (Blue). A Goat anti rabbit IgG (Alexa Fluor® 488, **ab150077**) at 1/2000 dilution was used as the secondary antibody.

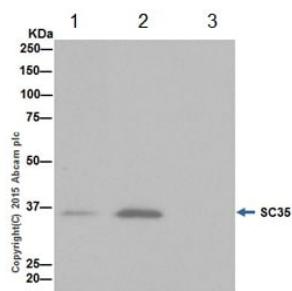


Immunohistochemistry (Formalin/PFA-fixed paraffin-embedded sections) - Anti-SC35 antibody
[EPR12238] (ab204916)

Immunohistochemical analysis of paraffin-embedded Human cervical carcinoma tissue labeling SC35 with ab204916 at 1/1000 dilution, followed by Goat Anti-Rabbit IgG H&L (HRP) (**ab97051**) at 1/500 dilution. Nuclear staining on Human cervical carcinoma is observed. Counter stained with Hematoxylin.

Secondary antibody only control: Used PBS instead of primary antibody, secondary antibody is Goat Anti-Rabbit IgG H&L (HRP) (**ab97051**) at 1/500 dilution.

Perform heat mediated antigen retrieval with Tris/EDTA buffer pH 9.0 before commencing with IHC staining protocol.



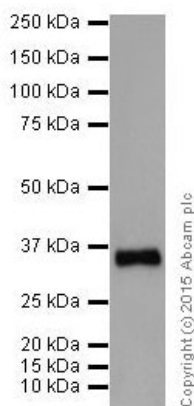
Immunoprecipitation - Anti-SC35 antibody
[EPR12238] (ab204916)

SC35 was immunoprecipitated from 1mg of HeLa (Human epithelial cells from cervix adenocarcinoma) whole cell lysate with ab204916 at 1/30 dilution. Western blot was performed from the immunoprecipitate using ab204916 at 1/1000 dilution. Anti-Rabbit IgG (HRP), specific to the non-reduced form of IgG, was used as secondary antibody at 1/1500.

Lane 1: HeLa whole cell lysate 10ug (Input). Lane 2: ab204916 IP in HeLa whole cell lysate. Lane 3: Rabbit monoclonal IgG (**ab172730**) instead of ab204916 in HeLa whole cell lysate.

Blocking and dilution buffer and concentration: 5% NFDM/TBST.

Exposure time: 1 second.



Western blot - Anti-SC35 antibody [EPR12238]
(ab204916)

Anti-SC35 antibody [EPR12238] (ab204916) at 1/1000 dilution + HepG2 (Human liver hepatocellular carcinoma) whole cell lysate at 20 µg

Secondary

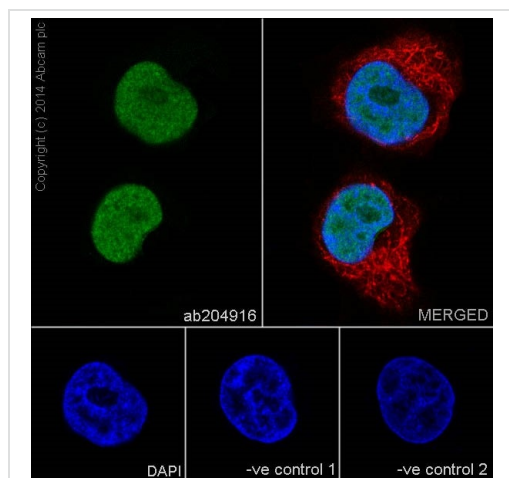
Goat Anti-Rabbit IgG, (H+L), Peroxidase conjugated at 1/1000 dilution

Predicted band size: 25 kDa

Observed band size: 35 kDa

Exposure time: 30 seconds

Blocking/Dilution buffer: 5% NFDM/TBST.

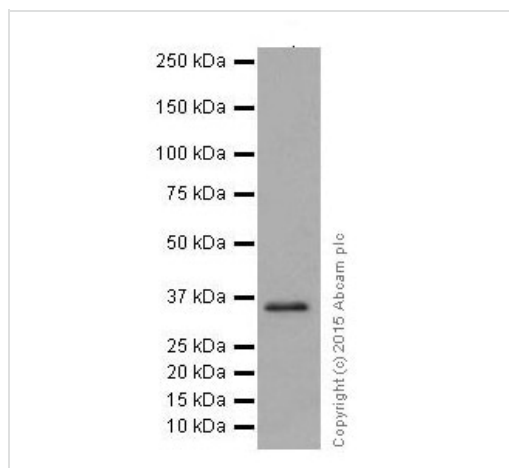


Immunocytochemistry/ Immunofluorescence - Anti-SC35 antibody [EPR12238] (ab204916)

Immunofluorescent analysis of 4% paraformaldehyde-fixed, 0.1% Triton X-100 permeabilized HeLa (Human epithelial cells from cervix adenocarcinoma) cells labeling SC35 with ab204916 at 1/100 dilution, followed by Goat anti-rabbit IgG (Alexa Fluor® 488) ([ab150077](#)) secondary antibody at 1/1000 dilution (green). Confocal image showing nuclear staining on HeLa cell line. The nuclear counter stain is DAPI (blue). Tubulin is detected with [ab7291](#) (anti-Tubulin mouse mAb) at 1/1000 dilution and [ab150120](#) (AlexaFluor®594 Goat anti-Mouse secondary) at 1/1000 dilution (red).

The negative controls are as follows:

-ve control 1: ab204916 at 1/250 dilution followed by [ab150120](#) (AlexaFluor®594 Goat anti-Mouse secondary) at 1/1000 dilution.
-ve control 2: [ab7291](#) (anti-Tubulin mouse mAb) at 1/1000 dilution followed by [ab150077](#) (Alexa Fluor®488 Goat Anti-Rabbit IgG H&L) at 1/1000 dilution.



Western blot - Anti-SC35 antibody [EPR12238] (ab204916)

Anti-SC35 antibody [EPR12238] (ab204916) at 1/5000 dilution + Human thymus lysate at 10 µg

Secondary

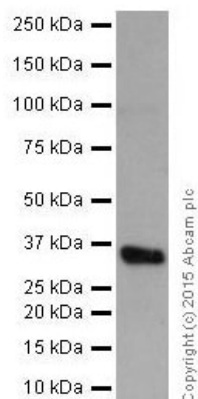
Anti-Rabbit IgG (HRP), specific to the non-reduced form of IgG at 1/1000 dilution

Predicted band size: 25 kDa

Observed band size: 35 kDa

Exposure time: 5 seconds

Blocking/Dilution buffer: 5% NFDM/TBST.



Western blot - Anti-SC35 antibody [EPR12238]
(ab204916)

Anti-SC35 antibody [EPR12238] (ab204916) at 1/1000 dilution +
Human fetal kidney lysate at 10 µg

Secondary

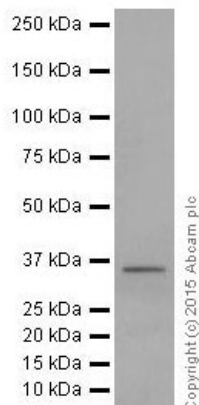
Anti-Rabbit IgG (HRP), specific to the non-reduced form of IgG at
1/1000 dilution

Predicted band size: 25 kDa

Observed band size: 35 kDa

Exposure time: 30 seconds

Blocking/Dilution buffer: 5% NFDm/TBST.



Western blot - Anti-SC35 antibody [EPR12238]
(ab204916)

Anti-SC35 antibody [EPR12238] (ab204916) at 1/1000 dilution +
Human fetal brain lysate at 10 µg

Secondary

Anti-Rabbit IgG (HRP), specific to the non-reduced form of IgG at
1/1000 dilution





Predicted band size: 25 kDa

Observed band size: 35 kDa

Exposure time: 3 minutes

Blocking/Dilution buffer: 5% NFDm/TBST.

Why choose a recombinant antibody?

 <p>Research with confidence Consistent and reproducible results</p>	 <p>Long-term and scalable supply Recombinant technology</p>
 <p>Success from the first experiment Confirmed specificity</p>	 <p>Ethical standards compliant Animal-free production</p>

Anti-SC35 antibody [EPR12238] (ab204916)

Please note: All products are "FOR RESEARCH USE ONLY. NOT FOR USE IN DIAGNOSTIC PROCEDURES"

Our Abpromise to you: Quality guaranteed and expert technical support

- Replacement or refund for products not performing as stated on the datasheet
- Valid for 12 months from date of delivery
- Response to your inquiry within 24 hours
- We provide support in Chinese, English, French, German, Japanese and Spanish
- Extensive multi-media technical resources to help you
- We investigate all quality concerns to ensure our products perform to the highest standards

If the product does not perform as described on this datasheet, we will offer a refund or replacement. For full details of the Abpromise, please visit <https://www.abcam.co.jp/abpromise> or contact our technical team.

Terms and conditions

- Guarantee only valid for products bought direct from Abcam or one of our authorized distributors