


### Anti-SAP102 antibody ab3438

★★★★★ [3 Abreviews](#) [5 References](#) [画像数 2](#)

#### 製品の概要

製品名	Anti-SAP102 antibody
製品の詳細	Rabbit polyclonal to SAP102
由来種	Rabbit
特異性	We have data to indicate that this antibody may not cross react with Mouse. However, this has not been conclusively tested and expression levels may vary in certain cell lines/tissues.
アプリケーション	<b>適用あり:</b> IHC-Fr, WB
種交差性	<b>交差種:</b> Rat <b>交差が予測される動物種:</b> Mouse, Human 
免疫原	Synthetic peptide corresponding to Rat SAP102 aa 83-100. Sequence: GPVPPKPVPKGKNTPKLNG

(Peptide available as [ab5841](#))

 [Run BLAST with](#)

 [Run BLAST with](#)

#### 特記事項

The Life Science industry has been in the grips of a reproducibility crisis for a number of years. Abcam is leading the way in addressing this with our range of recombinant monoclonal antibodies and knockout edited cell lines for gold-standard validation. Please check that this product meets your needs before purchasing.

If you have any questions, special requirements or concerns, please send us an inquiry and/or contact our Support team ahead of purchase. Recommended alternatives for this product can be found below, along with publications, customer reviews and Q&As

#### 製品の特性

製品の状態	Liquid
保存方法	Shipped at 4°C. Store at +4°C short term (1-2 weeks). Upon delivery aliquot. Store at -20°C or -80°C. Avoid freeze / thaw cycle.
バッファー	Preservative: 0.05% Sodium azide Constituents: 99% PBS, 0.1% BSA
精製度	Immunogen affinity purified
ポリ/モノ	ポリクローナル

## アプリケーション

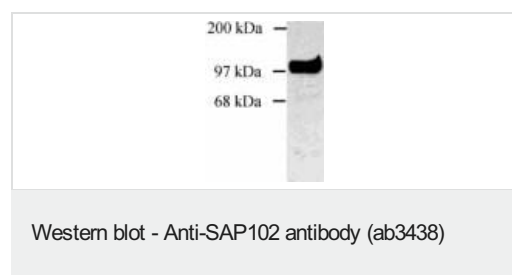
**The Abpromise guarantee** Abpromise保証は、次のテスト済みアプリケーションにおけるab3438の使用に適用されます  
アプリケーションノートには、推奨の開始希釈率がありますが、適切な希釈率につきましてはご検討ください。

アプリケーション	Abreviews	特記事項
IHC-Fr		Use a concentration of 10 µg/ml.
WB	★★★★★ (2)	Use a concentration of 3 µg/ml.

## ターゲット情報

機能	Required for learning most likely through its role in synaptic plasticity following NMDA receptor signaling.
関連疾患	Defects in DLG3 are the cause of mental retardation X-linked type 90 (MRX90) [MIM:300189]. Mental retardation is characterized by significantly sub-average general intellectual functioning associated with impairments in adaptive behavior and manifested during the developmental period. Non-syndromic mental retardation patients do not manifest other clinical signs.
配列類似性	Belongs to the MAGUK family. Contains 1 guanylate kinase-like domain. Contains 3 PDZ (DHR) domains. Contains 1 SH3 domain.

## 画像



Western blot of SAP102 on extract from COS cells transfected with rat SAP102 using ab3438.



Immunohistochemistry (Frozen sections) analysis of Ammon's Horn and the dentate gyrus of the rat hippocampus labeling SAP102 with ab3438.

**Please note:** All products are "FOR RESEARCH USE ONLY. NOT FOR USE IN DIAGNOSTIC PROCEDURES"

### **Our Abpromise to you: Quality guaranteed and expert technical support**

---

- Replacement or refund for products not performing as stated on the datasheet
- Valid for 12 months from date of delivery
- Response to your inquiry within 24 hours
  
- We provide support in Chinese, English, French, German, Japanese and Spanish
- Extensive multi-media technical resources to help you
- We investigate all quality concerns to ensure our products perform to the highest standards

If the product does not perform as described on this datasheet, we will offer a refund or replacement. For full details of the Abpromise, please visit <https://www.abcam.co.jp/abpromise> or contact our technical team.

### **Terms and conditions**

---

- Guarantee only valid for products bought direct from Abcam or one of our authorized distributors