

### Anti-SAMD9 antibody [EPR13603] ab180575

KO 評価済 リコンビナント RabMAb

5 References 画像数 9

#### 製品の概要

製品名	Anti-SAMD9 antibody [EPR13603]
製品の詳細	Rabbit monoclonal [EPR13603] to SAMD9
由来種	Rabbit
アプリケーション	<b>適用あり:</b> Flow Cyt (Intra), WB, ICC/IF
種交差性	<b>交差種:</b> Human
免疫原	Synthetic peptide. This information is proprietary to Abcam and/or its suppliers.
ポジティブ・コントロール	WB: A549, A431 and MCF7 cell lysates. Flow Cyt (intra): A431 and MCF7 cells. ICC/IF: A431 cells.
特記事項	<p>This product is a recombinant monoclonal antibody, which offers several advantages including:</p> <ul style="list-style-type: none"><li>- High batch-to-batch consistency and reproducibility</li><li>- Improved sensitivity and specificity</li><li>- Long-term security of supply</li><li>- Animal-free production</li></ul> <p>For more information <a href="#">see here</a>.</p> <p>Our RabMAb<sup>®</sup> technology is a patented hybridoma-based technology for making rabbit monoclonal antibodies. For details on our patents, please refer to <a href="#">RabMAb<sup>®</sup> patents</a>.</p>

#### 製品の特性

製品の状態	Liquid
保存方法	Shipped at 4°C. Store at +4°C short term (1-2 weeks). Upon delivery aliquot. Store at -20°C long term. Avoid freeze / thaw cycle.
バッファー	Preservative: 0.01% Sodium azide Constituents: 59% PBS, 40% Glycerol (glycerin, glycerine), 0.05% BSA
精製度	Protein A purified
ポリ/モノ	モノクローナル
クローン名	EPR13603
アイソタイプ	IgG

## アプリケーション

The Abpromise guarantee **Abpromise保証は、次のテスト済みアプリケーションにおけるab180575の使用に適用されます**  
アプリケーションノートには、推奨の開始希釈率がありますが、適切な希釈率につきましてはご検討ください。

アプリケーション	Abreviews	特記事項
Flow Cyt (Intra)		1/30 - 1/50. <b>ab172730</b> - Rabbit monoclonal IgG, is suitable for use as an isotype control with this antibody.
WB		1/1000 - 1/10000. Predicted molecular weight: 184 kDa.
ICC/IF		1/50 - 1/100.

## ターゲット情報

### 組織特異性

Widely expressed. Very low levels in skeletal muscle. Not detected in fetal brain. Down-regulated in aggressive fibromatosis, as well as in breast and colon cancers.

### 関連疾患

Defects in SAMD9 are the cause of normophosphatemic familial tumoral calcinosis (NFTC) [MIM:610455]. NFTC is an uncommon life-threatening disorder characterized by massive periarticular, and seldom visceral, deposition of calcified tumors.

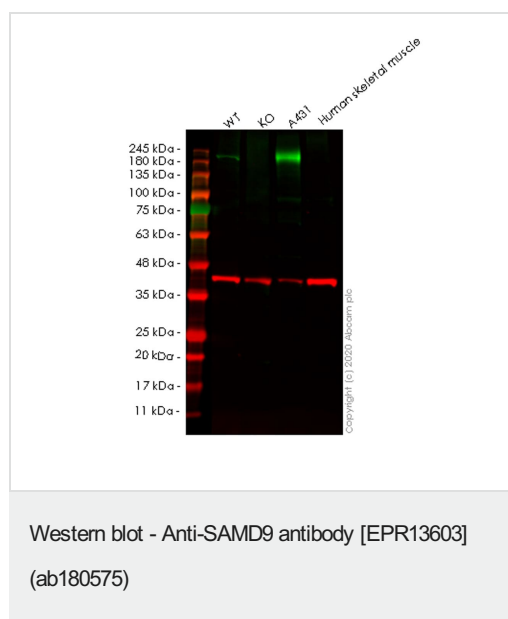
### 配列類似性

Contains 1 SAM (sterile alpha motif) domain.

### 細胞内局在

Cytoplasm.

## 画像



**All lanes** : Anti-SAMD9 antibody [EPR13603] (ab180575) at 1/1000 dilution

**Lane 1** : Wild-type A549 cell lysate

**Lane 2** : SAMD9 knockout A549 cell lysate

**Lane 3** : A431 cell lysate

**Lane 4** : Human skeletal muscle cell lysate

Lysates/proteins at 20 µg per lane.

### Secondary

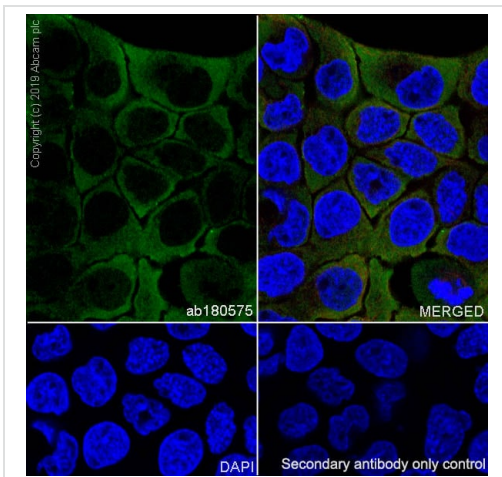
**All lanes** : Goat anti-Rabbit IgG H&L (IRDye® 800CW) preadsorbed (**ab216773**) at 1/10000 dilution

**Predicted band size**: 184 kDa

**Observed band size**: 184 kDa

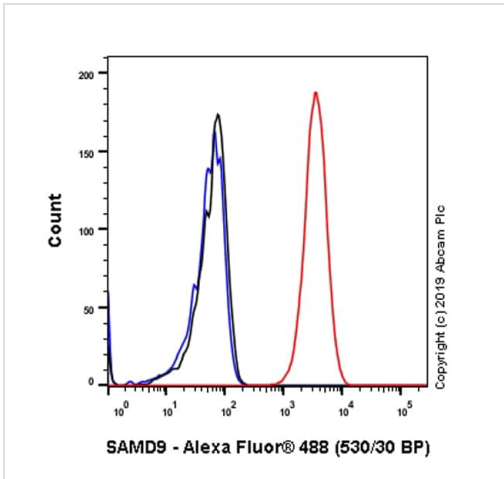
**Lanes 1-4:** Merged signal (red and green). Green - ab180575 observed at 184 kDa. Red - loading control **ab8245** observed at 36 kDa.

ab180575 Anti-SAMD9 antibody [EPR13603] was shown to specifically react with SAMD9 in wild-type A549 cells. Loss of signal was observed when knockout cell line **ab267038** (knockout cell lysate **ab257656**) was used. Wild-type and SAMD9 knockout samples were subjected to SDS-PAGE. ab180575 and Anti-GAPDH antibody [6C5] - Loading Control (**ab8245**) were incubated at room temperature for 2.5 hours at 1 in 1000 dilution and 1 in 20000 dilution respectively. Blots were developed with Goat anti-Rabbit IgG H&L (IRDye<sup>®</sup> 800CW) preadsorbed (**ab216773**) and Goat anti-Mouse IgG H&L (IRDye<sup>®</sup> 680RD) preadsorbed (**ab216776**) secondary antibodies at 1 in 20000 dilution for 1 hour at room temperature before imaging.



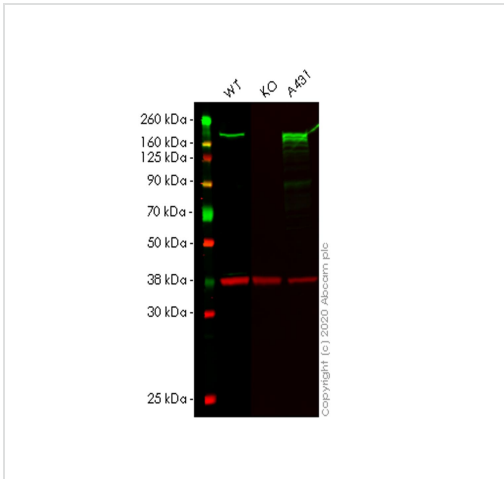
Immunocytochemistry/ Immunofluorescence analysis of A431 (Human epidermoid carcinoma epithelial cell) cells labeling SAMD9 with purified ab180575 at 1:50 dilution (5.4 µg/ml). Cells were fixed in 4% Paraformaldehyde and permeabilized with 0.1% tritonX-100. Cells were counterstained with none. Goat anti rabbit IgG (Alexa Fluor<sup>®</sup> 488, **ab150077**) was used as the secondary antibody at 1:1000 (2 µg/ml) dilution. DAPI (blue) was used as nuclear counterstain. PBS instead of the primary antibody was used as the secondary antibody only control.

Immunocytochemistry/ Immunofluorescence - Anti-SAMD9 antibody [EPR13603] (ab180575)



Flow Cytometry (Intracellular) - Anti-SAMD9 antibody [EPR13603] (ab180575)

Intracellular Flow Cytometry analysis of MCF-7 (Human breast adenocarcinoma epithelial cell) cells labeling SAMD9 with purified ab180575 at 1/30 dilution (10 µg/ml) (Red). Cells were fixed with 4% Paraformaldehyde and permeabilised with 90% Methanol. A Goat anti rabbit IgG (Alexa Fluor® 488, **ab150077**) secondary antibody was used at 1/2000. Isotype control - Rabbit monoclonal IgG (Black). Unlabeled control - Cell without incubation with primary antibody and secondary antibody (Blue).



Western blot - Anti-SAMD9 antibody [EPR13603] (ab180575)

**All lanes** : Anti-SAMD9 antibody [EPR13603] (ab180575) at 1/1000 dilution

**Lane 1** : Wild-type A549 cell lysate

**Lane 2** : SAMD9 knockout A549 cell lysate

**Lane 3** : A431 cell lysate

Lysates/proteins at 20 µg per lane.

### Secondary

**All lanes** : Goat anti-Rabbit IgG H&L (IRDye® 800CW) preadsorbed (**ab216773**) at 1/10000 dilution

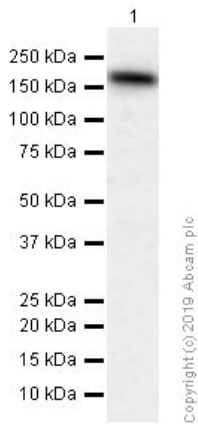
**Predicted band size:** 184 kDa

**Observed band size:** 184 kDa

**Lanes 1-3:** Merged signal (red and green). Green - ab180575 observed at 184 kDa. Red - loading control **ab8245** observed at 36 kDa.

ab180575 Anti-SAMD9 antibody [EPR13603] was shown to specifically react with SAMD9 in wild-type A549 cells. Loss of signal was observed when knockout cell line **ab267039** (knockout cell lysate **ab257657**) was used. Wild-type and SAMD9 knockout samples were subjected to SDS-PAGE. ab180575 and Anti-GAPDH antibody [6C5] - Loading Control (**ab8245**) were incubated overnight at 4°C at 1 in 1000 dilution and 1 in 20000 dilution respectively. Blots were developed with Goat anti-Rabbit IgG H&L

(IRDye® 800CW) preadsorbed ([ab216773](#)) and Goat anti-Mouse IgG H&L (IRDye® 680RD) preadsorbed ([ab216776](#)) secondary antibodies at 1 in 20000 dilution for 1 hour at room temperature before imaging.



Western blot - Anti-SAMD9 antibody [EPR13603] (ab180575)

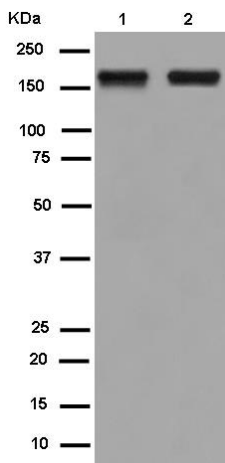
Anti-SAMD9 antibody [EPR13603] (ab180575) at 1/1000 dilution (Purified) + MCF7 (Human breast adenocarcinoma epithelial cell) whole cell lysates at 15 µg

#### Secondary

Goat Anti-Rabbit IgG H&L (HRP) ([ab97051](#)) at 1/20000 dilution

**Predicted band size:** 184 kDa

**Observed band size:** 184 kDa



Western blot - Anti-SAMD9 antibody [EPR13603] (ab180575)

**All lanes :** Anti-SAMD9 antibody [EPR13603] (ab180575) at 1/10000 dilution (unpurified)

**Lane 1 :** A431 cell lysate with NFDm/TBST

**Lane 2 :** MCF-7 cell lysate with NFDm/TBST

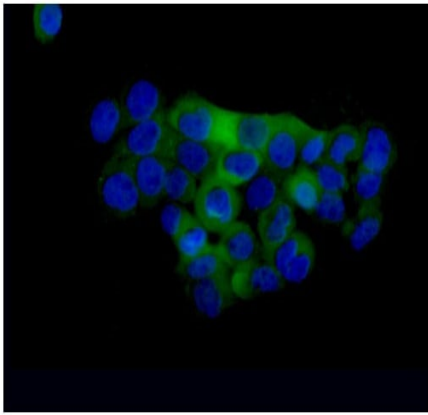
Lysates/proteins at 20 µg per lane.

Blocking peptides at 5 % per lane.

#### Secondary

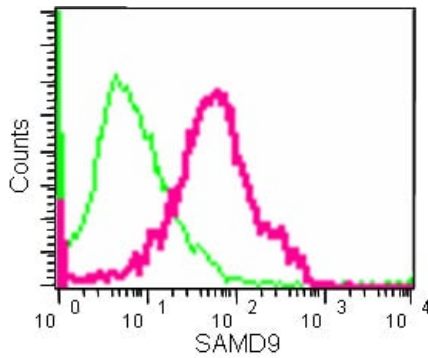
**All lanes :** Goat Anti-rabbit HRP at 1/1000 dilution

**Predicted band size:** 184 kDa



Immunocytochemistry/ Immunofluorescence - Anti-SAMD9 antibody [EPR13603] (ab180575)

Immunofluorescence analysis of 4% paraformaldehyde-A431 cells labeling SAMD9 with ab180575 (unpurified) (green) at 1/100 dilution. Dapi counterstain (blue). Goat anti rabbit IgG (Dylight 488) at a dilution of 1/200 was used as a secondary antibody.



Flow Cytometry (Intracellular) - Anti-SAMD9 antibody [EPR13603] (ab180575)

Intracellular flow cytometric analysis of 2% paraformaldehyde-fixed A431 cells labeling SAMD9 with ab180575 (unpurified) at 1/50 dilution, or Rabbit monoclonal IgG Isotype control.

Why choose a recombinant antibody?

**Research with confidence**  
Consistent and reproducible results

**Long-term and scalable supply**  
Recombinant technology

**Success from the first experiment**  
Confirmed specificity

**Ethical standards compliant**  
Animal-free production

Anti-SAMD9 antibody [EPR13603] (ab180575)

**Please note:** All products are "FOR RESEARCH USE ONLY. NOT FOR USE IN DIAGNOSTIC PROCEDURES"

### Our Abpromise to you: Quality guaranteed and expert technical support

---

- Replacement or refund for products not performing as stated on the datasheet
- Valid for 12 months from date of delivery
- Response to your inquiry within 24 hours
- We provide support in Chinese, English, French, German, Japanese and Spanish
- Extensive multi-media technical resources to help you
- We investigate all quality concerns to ensure our products perform to the highest standards

If the product does not perform as described on this datasheet, we will offer a refund or replacement. For full details of the Abpromise, please visit <https://www.abcam.co.jp/abpromise> or contact our technical team.

### Terms and conditions

---

- Guarantee only valid for products bought direct from Abcam or one of our authorized distributors