

Anti-SALL1 antibody ab31526

★★★★★ [3 Abreviews](#) [15 References](#) [画像数 3](#)

製品の概要

製品名	Anti-SALL1 antibody
製品の詳細	Rabbit polyclonal to SALL1
由来種	Rabbit
特異性	Replenishment batches of ab31526 are tested in WB. Previous batches were additionally validated in ICC/IF. This application is still expected to work and is covered by our Abpromise guarantee.
アプリケーション	適用あり: ICC/IF, WB
種交差性	交差種: Mouse 交差が予測される動物種: Chicken, Human, Drosophila melanogaster 
免疫原	Synthetic peptide conjugated to KLH derived from within residues 1300 to the C-terminus of Human SALL1. Immunogen の所有権に関して (Peptide available as ab31903 .)
ポジティブ・コントロール	ICC/IF: mES cells. WB: E14Tg2a (Mouse embryonic stem cell line) Whole Cell Lysate
特記事項	<p>The Life Science industry has been in the grips of a reproducibility crisis for a number of years. Abcam is leading the way in addressing this with our range of recombinant monoclonal antibodies and knockout edited cell lines for gold-standard validation. Please check that this product meets your needs before purchasing.</p> <p>If you have any questions, special requirements or concerns, please send us an inquiry and/or contact our Support team ahead of purchase. Recommended alternatives for this product can be found below, along with publications, customer reviews and Q&As</p>

製品の特性

製品の状態	Liquid
保存方法	Shipped at 4°C. Store at +4°C short term (1-2 weeks). Upon delivery aliquot. Store at -20°C or -80°C. Avoid freeze / thaw cycle.
バッファー	pH: 7.40 Preservative: 0.02% Sodium azide Constituent: PBS

Batches of this product that have a concentration < 1mg/ml may have BSA added as a stabilising agent. If you would like information about the formulation of a specific lot, please contact our

scientific support team who will be happy to help.

精製度	Immunogen affinity purified
ポリ/モノ	ポリクローナル
アイソタイプ	IgG

アプリケーション

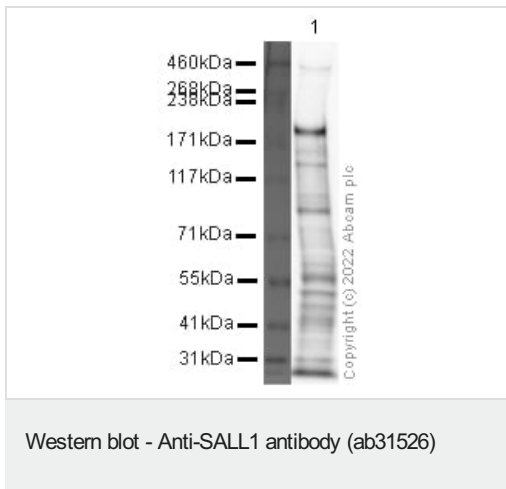
The Abpromise guarantee **Abpromise保証は、次のテスト済みアプリケーションにおけるab31526の使用に適用されず**
アプリケーションノートには、推奨の開始希釈率がありますが、適切な希釈率につきましてはご検討ください。

アプリケーション	Abreviews	特記事項
ICC/IF		Use a concentration of 1 µg/ml.
WB		Use a concentration of 1 µg/ml. Detects a band of approximately 200 kDa (predicted molecular weight: 140 kDa).

ターゲット情報

機能	Transcriptional repressor involved in organogenesis.
組織特異性	Highest levels in kidney. Lower levels in adult brain (enriched in corpus callosum, lower expression in substantia nigra) and liver.
関連疾患	Defects in SALL1 are the cause of Townes-Brocks syndrome (TBS) [MIM:107480]. TBS is a rare, autosomal dominant malformation syndrome with a combination of imperforate anus, triphalangeal and supernumerary thumbs, malformed ears and sensorineural hearing loss. Defects in SALL1 may cause a phenotype overlapping with TBS, similar to bronchio-oto-renal syndrome (BOR) [MIM:113650]. BOR is an autosomal dominant disorder, manifested by various combinations of preauricular pits, branchial fistulae or cysts, lacrimal duct stenosis, hearing loss, structural defects of the outer, middle, or inner ear, and renal dysplasia. Associated defects include asthenic habitus, long narrow facies, constricted palate, deep overbite, and myopia. Hearing loss may be due to Mondini type cochlear defect and stapes fixation.
配列類似性	Belongs to the sal C2H2-type zinc-finger protein family. Contains 9 C2H2-type zinc fingers.
発生段階	In fetal brain exclusively in neurons of the subependymal region of hypothalamus lateral to the third ventricle.
細胞内局在	Nucleus.

画像



Anti-SALL1 antibody (ab31526) at 1 µg/ml + Mouse embryonic stem cell lysate at 10 µg

Secondary

Goat polyclonal to Rabbit IgG - H&L - Pre-Adsorbed (HRP) at 1/50000 dilution

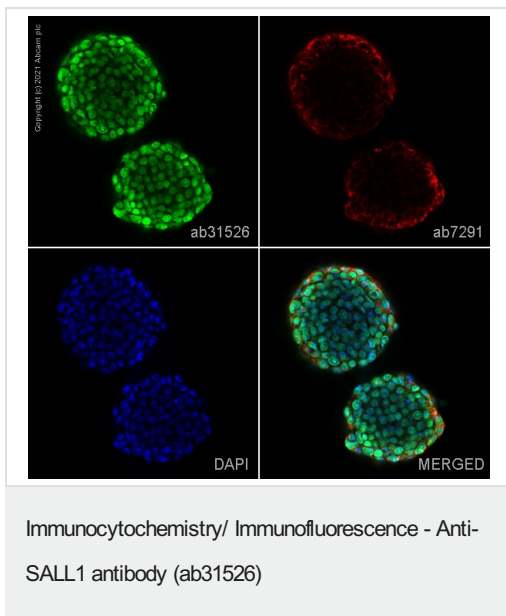
Predicted band size: 140 kDa

Observed band size: 200 kDa

Exposure time: 8 minutes

Blocking buffer: 2% BSA block

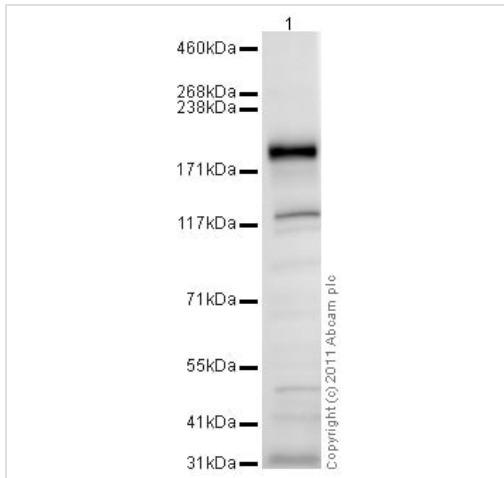
Gel type: TA



ab31526 staining SALL1 in mES cells. The cells were fixed with 100% methanol (5 min), permeabilized with 0.1% PBS-Tween for 5 minutes and then blocked with 1% BSA/10% normal goat serum/0.3M glycine in 0.1% PBS-Tween for 1h. The cells were then incubated overnight at 4°C with ab31526 at 1µg/ml and **ab7291**, Mouse monoclonal [DM1A] to alpha Tubulin - Loading Control. Cells were then incubated with **ab150081**, Goat polyclonal Secondary Antibody to Rabbit IgG - H&L (Alexa Fluor® 488), pre-adsorbed at 1/1000 dilution (shown in green) and **ab150120**, Goat polyclonal Secondary Antibody to Mouse IgG - H&L (Alexa Fluor® 594), pre-adsorbed at 1/1000 dilution (shown in pseudocolour red). Nuclear DNA was labelled with DAPI (shown in blue).

Also suitable in cells fixed with 4% paraformaldehyde (10 min).

Image was acquired with a confocal microscope (Leica-Microsystems TCS SP8) and a single confocal section is shown.



Western blot - Anti-SALL1 antibody (ab31526)

Anti-SALL1 antibody (ab31526) at 1 µg/ml + E14Tg2a (Mouse embryonic stem cell line) Whole Cell Lysate at 10 µg

Secondary

Goat Anti-Rabbit IgG H&L (HRP) preadsorbed (**ab97080**) at 1/5000 dilution

Performed under reducing conditions.

Predicted band size: 140 kDa

Observed band size: 200 kDa

Additional bands at: 130 kDa. We are unsure as to the identity of these extra bands.

Exposure time: 2 minutes

Although the predicted band size is 140 kDa based on Swiss-prot data, a band of 200 kDa has been previously observed. J Biol Chem. 2011 Jan 14;286(2):1037-45 PMID:21062744

Please note: All products are "FOR RESEARCH USE ONLY. NOT FOR USE IN DIAGNOSTIC PROCEDURES"

Our Abpromise to you: Quality guaranteed and expert technical support

- Replacement or refund for products not performing as stated on the datasheet
- Valid for 12 months from date of delivery
- Response to your inquiry within 24 hours
- We provide support in Chinese, English, French, German, Japanese and Spanish
- Extensive multi-media technical resources to help you
- We investigate all quality concerns to ensure our products perform to the highest standards

If the product does not perform as described on this datasheet, we will offer a refund or replacement. For full details of the Abpromise, please visit <https://www.abcam.co.jp/abpromise> or contact our technical team.

Terms and conditions

- Guarantee only valid for products bought direct from Abcam or one of our authorized distributors