


Anti-SA2 antibody [EPR10994(B)] ab155081

KO 評価済 リコンビナント RabMAb

1 References 画像数 9

製品の概要

製品名	Anti-SA2 antibody [EPR10994(B)]
製品の詳細	Rabbit monoclonal [EPR10994(B)] to SA2
由来種	Rabbit
アプリケーション	適用あり: WB, IHC-P 適用なし: Flow Cyt, ICC/IF or IP
種交差性	交差種: Human 交差が予測される動物種: Mouse, Rat 
免疫原	Synthetic peptide within Human SA2 aa 1200 to the C-terminus. The exact sequence is proprietary. Database link: Q8N3U4
ポジティブ・コントロール	WB: HCT116, HeLa, K562, MCF7 and Jurkat whole cell lysate (ab7899). IHC-P: Human colon tissue and gastric adenocarcinoma tissue.
特記事項	This product is a recombinant monoclonal antibody, which offers several advantages including: <ul style="list-style-type: none"> - High batch-to-batch consistency and reproducibility - Improved sensitivity and specificity - Long-term security of supply - Animal-free production For more information see here . Our RabMAb [®] technology is a patented hybridoma-based technology for making rabbit monoclonal antibodies. For details on our patents, please refer to RabMAb[®] patents .

製品の特性

製品の状態	Liquid
保存方法	Shipped at 4°C. Store at -20°C.
バッファー	pH: 7.2 Preservative: 0.01% Sodium azide Constituents: 9% PBS, 40% Glycerol (glycerin, glycerine), 0.05% BSA, 50% Tissue culture supernatant
精製度	Protein A purified

ポリ/モノ	モノクローナル
クローン名	EPR10994(B)
アイソタイプ	IgG

アプリケーション

The Abpromise guarantee **Abpromise保証は、**次のテスト済みアプリケーションにおけるab155081の使用に適用されます
アプリケーションノートには、推奨の開始希釈率がありますが、適切な希釈率につきましてはご検討ください。

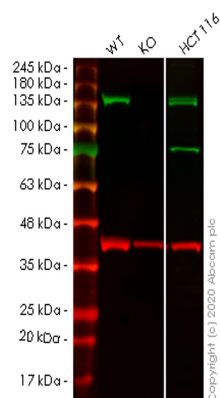
アプリケーション	Abreviews	特記事項
WB		1/10000 - 1/50000. Predicted molecular weight: 141 kDa.
IHC-P		1/50 - 1/100. Perform heat mediated antigen retrieval before commencing with IHC staining protocol.

追加情報 Is unsuitable for Flow Cyt, ICC/IF or IP.

ターゲット情報

機能	Component of cohesin complex, a complex required for the cohesion of sister chromatids after DNA replication. The cohesin complex apparently forms a large proteinaceous ring within which sister chromatids can be trapped. At anaphase, the complex is cleaved and dissociates from chromatin, allowing sister chromatids to segregate. The cohesin complex may also play a role in spindle pole assembly during mitosis.
配列類似性	Belongs to the SCC3 family. Contains 1 SCD (stromalin conservative) domain.
翻訳後修飾	Phosphorylated by PLK. The large dissociation of cohesin from chromosome arms during prophase is partly due to its phosphorylation.
細胞内局在	Nucleus. Chromosome. Chromosome > centromere. Associates with chromatin. Before prophase it is scattered along chromosome arms. During prophase, most of cohesin complexes dissociate from chromatin probably because of phosphorylation by PLK, except at centromeres, where cohesin complexes remain. At anaphase, the RAD21 subunit of cohesin is cleaved, leading to the dissociation of the complex from chromosomes, allowing chromosome separation. In germ cells, cohesin complex dissociates from chromatin at prophase I, and may be replaced by a meiosis-specific cohesin complex.

画像



Western blot - Anti-SA2 antibody [EPR10994(B)]
(ab155081)

All lanes : Anti-SA2 antibody [EPR10994(B)] (ab155081) at 1/500 dilution

Lane 1 : Wild-type HeLa cell lysate

Lane 2 : STAG2 knockout HeLa cell lysate

Lane 3 : HCT116 cell lysate

Lysates/proteins at 20 µg per lane.

Secondary

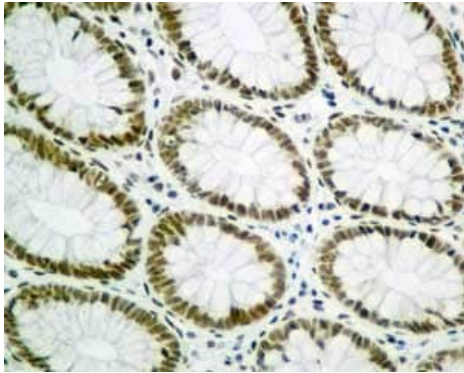
All lanes : Goat anti-Rabbit IgG H&L (IRDye® 800CW) preadsorbed ([ab216773](#)) at 1/10000 dilution

Predicted band size: 141 kDa

Observed band size: 141 kDa

Lanes 1-3: Merged signal (red and green). Green - ab155081 observed at 141 kDa. Red - loading control [ab8245](#) observed at 36 kDa.

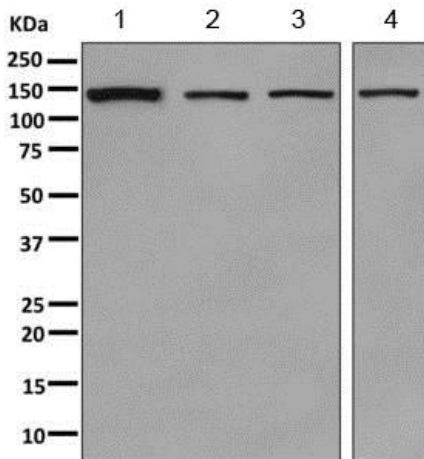
ab155081 Anti-SA2 antibody [EPR10994(B)] was shown to specifically react with SA2 in wild-type HeLa cells. Loss of signal was observed when knockout cell line [ab265461](#) (knockout cell lysate [ab257707](#)) was used. Wild-type and SA2 knockout samples were subjected to SDS-PAGE. ab155081 and Anti-GAPDH antibody [6C5] - Loading Control ([ab8245](#)) were incubated overnight at 4°C at 1 in 500 dilution and 1 in 20000 dilution respectively. Blots were developed with Goat anti-Rabbit IgG H&L (IRDye® 800CW) preadsorbed ([ab216773](#)) and Goat anti-Mouse IgG H&L (IRDye® 680RD) preadsorbed ([ab216776](#)) secondary antibodies at 1 in 20000 dilution for 1 hour at room temperature before imaging.



Immunohistochemistry (Formalin/PFA-fixed paraffin-embedded sections) - Anti-SA2 antibody [EPR10994(B)] (ab155081)

Immunohistochemical analysis of paraffin-embedded Human colon tissue labeling SA2 with ab155081 at 1/50 dilution.

Perform heat mediated antigen retrieval before commencing with IHC staining protocol.



Western blot - Anti-SA2 antibody [EPR10994(B)] (ab155081)

All lanes : Anti-SA2 antibody [EPR10994(B)] (ab155081) at 1/10000 dilution

Lane 1 : HeLa cell lysate

Lane 2 : K562 cell lysate

Lane 3 : MCF7 cell lysate

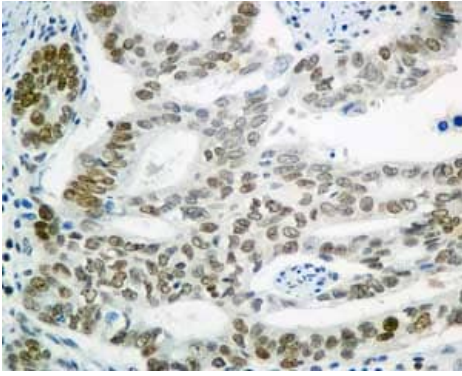
Lane 4 : Jurkat cell lysate

Lysates/proteins at 10 µg per lane.

Secondary

All lanes : Goat anti-rabbit HRP at 1/2000 dilution

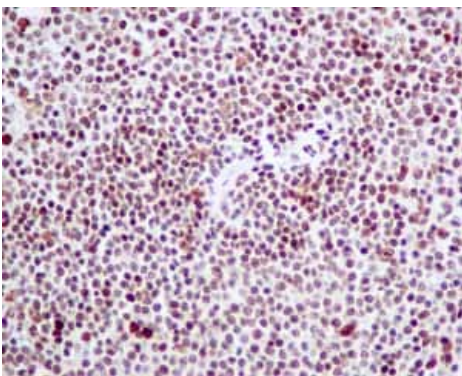
Predicted band size: 141 kDa



Immunohistochemistry (Formalin/PFA-fixed paraffin-embedded sections) - Anti-SA2 antibody
[EPR10994(B)] (ab155081)

Immunohistochemical analysis of paraffin-embedded Human gastric adenocarcinoma tissue labeling SA2 with ab155081 at 1/50 dilution.

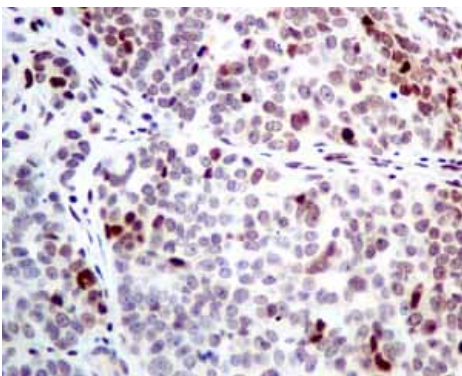
Perform heat mediated antigen retrieval before commencing with IHC staining protocol.



Immunohistochemistry (Formalin/PFA-fixed paraffin-embedded sections) - Anti-SA2 antibody
[EPR10994(B)] (ab155081)

Immunohistochemical analysis of paraffin embedded Human normal spleen tissue using ab155081 showing +ve staining.

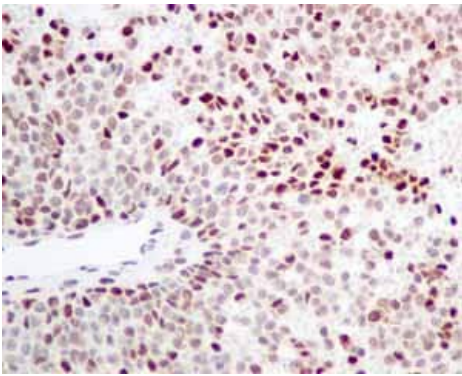
Perform heat mediated antigen retrieval before commencing with IHC staining protocol.



Immunohistochemistry (Formalin/PFA-fixed paraffin-embedded sections) - Anti-SA2 antibody
[EPR10994(B)] (ab155081)

Immunohistochemical analysis of paraffin embedded Human ovarian carcinoma tissue using ab155081 showing +ve staining.

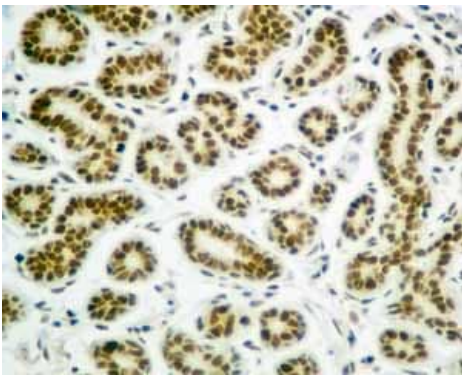
Perform heat mediated antigen retrieval before commencing with IHC staining protocol.



Immunohistochemical analysis of paraffin embedded Human melanoma tissue using ab155081 showing +ve staining.

Perform heat mediated antigen retrieval before commencing with IHC staining protocol.

Immunohistochemistry (Formalin/PFA-fixed paraffin-embedded sections) - Anti-SA2 antibody
[EPR10994(B)] (ab155081)



Immunohistochemical analysis of paraffin embedded Human normal breast tissue using ab155081 showing +ve staining.

Perform heat mediated antigen retrieval before commencing with IHC staining protocol.

Immunohistochemistry (Formalin/PFA-fixed paraffin-embedded sections) - Anti-SA2 antibody
[EPR10994(B)] (ab155081)

Why choose a recombinant antibody?



Research with confidence
Consistent and reproducible results



Long-term and scalable supply
Recombinant technology



Success from the first experiment
Confirmed specificity



Ethical standards compliant
Animal-free production

Anti-SA2 antibody [EPR10994(B)] (ab155081)

Please note: All products are "FOR RESEARCH USE ONLY. NOT FOR USE IN DIAGNOSTIC PROCEDURES"

Our Abpromise to you: Quality guaranteed and expert technical support

- Replacement or refund for products not performing as stated on the datasheet
- Valid for 12 months from date of delivery
- Response to your inquiry within 24 hours

- We provide support in Chinese, English, French, German, Japanese and Spanish
- Extensive multi-media technical resources to help you
- We investigate all quality concerns to ensure our products perform to the highest standards

If the product does not perform as described on this datasheet, we will offer a refund or replacement. For full details of the Abpromise, please visit <https://www.abcam.co.jp/abpromise> or contact our technical team.

Terms and conditions

- Guarantee only valid for products bought direct from Abcam or one of our authorized distributors