


Anti-SA1 antibody ab4457

17 References **画像数 3**

製品の概要

| | |
|----------|-----------------------------------------------------------------------------------------------------------------------------------------------------------------------------------------------------------------------------------------------------------------------------------------------------------------------------------------------------------------------------------------------------------------------------------------------------------------------------------------------------------------------------------------------------------------------------------------------------------------|
| 製品名 | Anti-SA1 antibody |
| 製品の詳細 | Goat polyclonal to SA1 |
| 由来種 | Goat |
| アプリケーション | 適用あり: ChIP, WB, ICC, IP, ChIP/Chip |
| 種交差性 | 交差種: Mouse, Human, Xenopus laevis 交差が予測される動物種: Rabbit, Horse, Guinea pig, Cow, Dog, Pig, Chimpanzee, Ferret, Rhesus monkey  |
| 免疫原 | Synthetic peptide corresponding to Human SA1 aa 1150-1200. |
| 特記事項 | <p>The Life Science industry has been in the grips of a reproducibility crisis for a number of years. Abcam is leading the way in addressing this with our range of recombinant monoclonal antibodies and knockout edited cell lines for gold-standard validation. Please check that this product meets your needs before purchasing.</p> <p>If you have any questions, special requirements or concerns, please send us an inquiry and/or contact our Support team ahead of purchase. Recommended alternatives for this product can be found below, along with publications, customer reviews and Q&As</p> |

製品の特性

| | |
|--------|-------------------------------------------------------------------------------------------------------------------------|
| 製品の状態 | Liquid |
| 保存方法 | Shipped at 4°C. Store at +4°C short term (1-2 weeks). Upon delivery aliquot. Store at -20°C. Avoid freeze / thaw cycle. |
| バッファー | <p>pH: 7</p> <p>Preservative: 0.1% Sodium azide</p> <p>Constituents: 0.021% PBS, 1.764% Sodium citrate, 1.815% Tris</p> |
| 精製度 | Immunogen affinity purified |
| ポリ/モノ | ポリクローナル |
| アイソタイプ | IgG |

アプリケーション

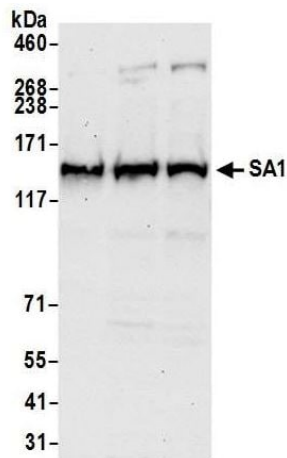
The Abpromise guarantee **Abpromise保証は、次のテスト済みアプリケーションにおけるab4457の使用に適用されます**
 アプリケーションノートには、推奨の開始希釈率がありますが、適切な希釈率につきましてはご検討ください。

| アプリケーション | Abreviews | 特記事項 |
|-----------|-----------|--------------------------------------------------------------------------------------------------|
| ChIP | | Use at an assay dependent concentration. PubMed: 18550811 |
| WB | | 1/2000 - 1/10000. Detects a band of approximately 144 kDa (predicted molecular weight: 144 kDa). |
| ICC | | 1/500 - 1/2000. |
| IP | | Use at 2-10 µg/mg of lysate. |
| ChIP/Chip | | Use at an assay dependent concentration. PubMed: 18550811 |

ターゲット情報

| | |
|-------|------------------------------------------------------------------------------------------------------------------------------------------------------------------------------------------------------------------------------------------------------------------------------------------------------------------------------------------------------------------------------------------------------------------------------------------------------------|
| 機能 | Component of cohesin complex, a complex required for the cohesion of sister chromatids after DNA replication. The cohesin complex apparently forms a large proteinaceous ring within which sister chromatids can be trapped. At anaphase, the complex is cleaved and dissociates from chromatin, allowing sister chromatids to segregate. The cohesin complex may also play a role in spindle pole assembly during mitosis. |
| 配列類似性 | Belongs to the SCC3 family. Contains 1 SCD (stromalin conservative) domain. |
| 翻訳後修飾 | Phosphorylated by PLK. The large dissociation of cohesin from chromosome arms during prophase is partly due to its phosphorylation. |
| 細胞内局在 | Nucleus. Chromosome. Chromosome > centromere. Associates with chromatin. Before prophase it is scattered along chromosome arms. During prophase, most of cohesin complexes dissociate from chromatin probably because of phosphorylation by PLK, except at centromeres, where cohesin complexes remain. At anaphase, the RAD21 subunit of cohesin is cleaved, leading to the dissociation of the complex from chromosomes, allowing chromosome separation. |

画像



Western blot - Anti-SA1 antibody (ab4457)

All lanes : Anti-SA1 antibody (ab4457) at 1/10000 dilution

Lane 1 : HeLa Whole cell lysate

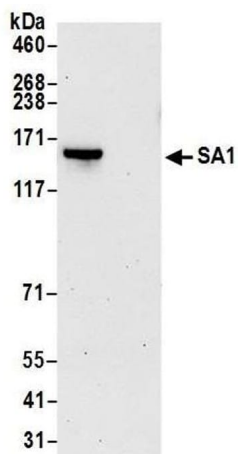
Lane 2 : 293T Whole cell lysate

Lane 3 : Jurkat Whole cell lysate

Lysates/proteins at 50 µg per lane.

Predicted band size: 144 kDa

Detection: Chemiluminescence with an exposure time of 30 seconds.

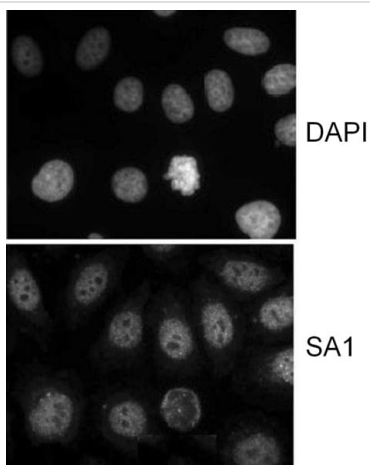


Immunoprecipitation - Anti-SA1 antibody (ab4457)

SA1 was immunoprecipitated from HeLa whole cell lysate with 6 µg/mg lysate ab4457. Western blot was performed from the immunoprecipitate using ab4457 at 0.1 µg/ml dilution.

Lane 1: ab4457 IP in HeLa whole cell lysate.

Lane 2: Control IgG IP in HeLa whole cell lysate.



Immunocytochemistry - Anti-SA1 antibody (ab4457)

Immunocytochemistry analysis of HeLa cells (extracted for 5 minutes at 4°C in 0.5% Triton in CSK buffer) labelling SA1 with ab4457 at 1µg/ml.

Our Abpromise to you: Quality guaranteed and expert technical support

- Replacement or refund for products not performing as stated on the datasheet
- Valid for 12 months from date of delivery
- Response to your inquiry within 24 hours

- We provide support in Chinese, English, French, German, Japanese and Spanish
- Extensive multi-media technical resources to help you
- We investigate all quality concerns to ensure our products perform to the highest standards

If the product does not perform as described on this datasheet, we will offer a refund or replacement. For full details of the Abpromise, please visit <https://www.abcam.co.jp/abpromise> or contact our technical team.

Terms and conditions

- Guarantee only valid for products bought direct from Abcam or one of our authorized distributors