


Anti-S31 antibody ab140506

画像数 2

製品の概要

製品名	Anti-S31 antibody
製品の詳細	Rabbit polyclonal to S31
由来種	Rabbit
特異性	BLAST analysis of the peptide immunogen showed no homology with other Human proteins, except HTR1F (65%).
アプリケーション	適用あり: IHC-P
種交差性	交差種: Human 交差が予測される動物種: Horse, Chicken, Guinea pig, Cow, Turkey, Chimpanzee, Lizard, Monkey, Zebrafish, Gorilla, Opossum, Orangutan, House sparrow, Bat, Elephant 
免疫原	Synthetic peptide corresponding to Human S31 (intracellular).
ポジティブ・コントロール	Human skin and kidney tissues.
特記事項	<p>The Life Science industry has been in the grips of a reproducibility crisis for a number of years. Abcam is leading the way in addressing this with our range of recombinant monoclonal antibodies and knockout edited cell lines for gold-standard validation. Please check that this product meets your needs before purchasing.</p> <p>If you have any questions, special requirements or concerns, please send us an inquiry and/or contact our Support team ahead of purchase. Recommended alternatives for this product can be found below, along with publications, customer reviews and Q&As</p>

製品の特性

製品の状態	Liquid
保存方法	Shipped at 4°C.
バッファー	pH: 7.4 Preservative: 0.1% Sodium azide Constituent: 99% PBS
精製度	Immunogen affinity purified
ポリ/モノ	ポリクローナル
アイソタイプ	IgG

アプリケーション

The Abpromise guarantee Abpromise保証は、 次のテスト済みアプリケーションにおけるab140506の使用に適用されます
アプリケーションノートには、推奨の開始希釈率がありますが、適切な希釈率につきましてはご検討ください。

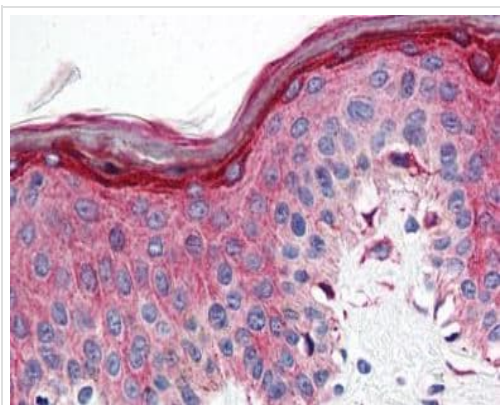
アプリケーション	Abreviews	特記事項
IHC-P		Use a concentration of 10 µg/ml. Perform heat mediated antigen retrieval before commencing with IHC staining protocol.

ターゲット情報

関連性 This is one of the several different receptors for 5-HT, a biogenic hormone that functions as a neurotransmitter, a hormone, and a mitogen. The activity of this receptor is mediated by G proteins that inhibit adenylate cyclase activity. The 5-HT1E receptor is expressed in human cortex, caudate, putamen, and amygdala, as well as in dorsal root ganglia and in coronary artery. ESTs have been isolated from human brain cancer libraries.

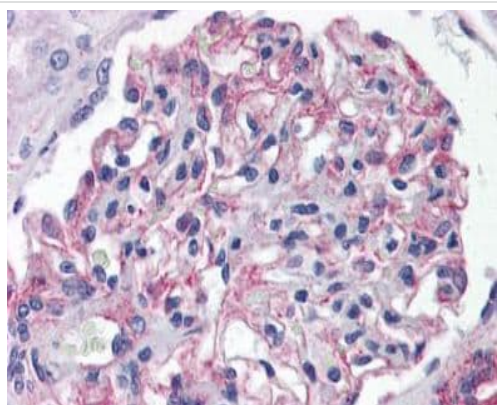
細胞内局在 Cell Membrane, Multi-pass membrane protein.

画像



Immunohistochemical analysis of formalin-fixed, paraffin-embedded Human skin tissue labelling S31 with ab140506 at 10 µg/ml.

Immunohistochemistry (Formalin/PFA-fixed paraffin-embedded sections) - Anti-S31 antibody (ab140506)



Immunohistochemical analysis of formalin-fixed, paraffin-embedded Human kidney tissue labelling S31 with ab140506 at 10 µg/ml.

Immunohistochemistry (Formalin/PFA-fixed paraffin-embedded sections) - Anti-S31 antibody (ab140506)

Please note: All products are "FOR RESEARCH USE ONLY. NOT FOR USE IN DIAGNOSTIC PROCEDURES"

Our Abpromise to you: Quality guaranteed and expert technical support

- Replacement or refund for products not performing as stated on the datasheet
- Valid for 12 months from date of delivery
- Response to your inquiry within 24 hours
- We provide support in Chinese, English, French, German, Japanese and Spanish
- Extensive multi-media technical resources to help you
- We investigate all quality concerns to ensure our products perform to the highest standards

If the product does not perform as described on this datasheet, we will offer a refund or replacement. For full details of the Abpromise, please visit <https://www.abcam.co.jp/abpromise> or contact our technical team.

Terms and conditions

- Guarantee only valid for products bought direct from Abcam or one of our authorized distributors