

Anti-S1PR2 antibody ab235919

★★★★★ [1 Abreviews](#) [3 References](#) [画像数 2](#)

製品の概要

製品名	Anti-S1PR2 antibody
製品の詳細	Rabbit polyclonal to S1PR2
由来種	Rabbit
アプリケーション	適用あり: WB, ICC/IF
種交差性	交差種: Human 交差が予測される動物種: Rat 
免疫原	Recombinant fragment corresponding to Human S1PR2 aa 250 to the C-terminus. Database link: O95136 Run BLAST with Run BLAST with
ポジティブ・コントロール	WB: MCF-7, 293, and Ntera-2 whole cell lysates. ICC/IF: SH-SY5Y cells.
特記事項	<p>The Life Science industry has been in the grips of a reproducibility crisis for a number of years. Abcam is leading the way in addressing this with our range of recombinant monoclonal antibodies and knockout edited cell lines for gold-standard validation. Please check that this product meets your needs before purchasing.</p> <p>If you have any questions, special requirements or concerns, please send us an inquiry and/or contact our Support team ahead of purchase. Recommended alternatives for this product can be found below, along with publications, customer reviews and Q&As</p>

製品の特性

製品の状態	Liquid
保存方法	Shipped at 4°C. Store at +4°C short term (1-2 weeks). Upon delivery aliquot. Store at -20°C long term. Avoid freeze / thaw cycle.
バッファー	pH: 7.40 Preservative: 0.03% Proclin 300 Constituents: PBS, 50% Glycerol (glycerin, glycerine)
精製度	Affinity purified
特記事項(精製)	Purity >95%.
ポリ/モノ	ポリクローナル
アイソタイプ	IgG

アプリケーション

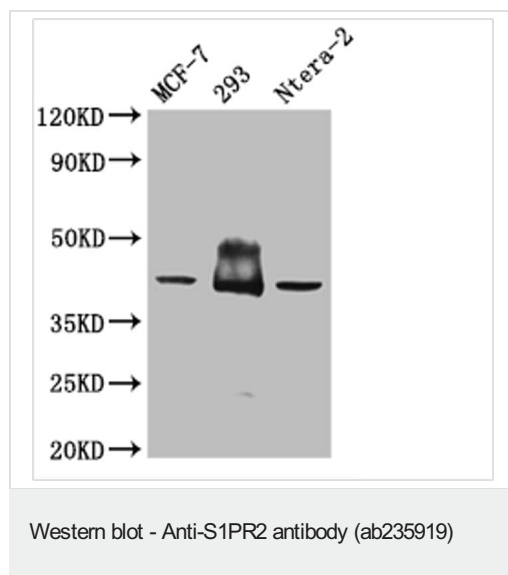
The Abpromise guarantee Abpromise保証は、次のテスト済みアプリケーションにおけるab235919の使用に適用されます
アプリケーションノートには、推奨の開始希釈率がありますが、適切な希釈率につきましてはご検討ください。

アプリケーション	Abreviews	特記事項
WB	★☆☆☆☆ (1)	1/500 - 1/5000. Predicted molecular weight: 39 kDa.
ICC/IF		1/200 - 1/500.

ターゲット情報

機能	Receptor for the lysosphingolipid sphingosine 1-phosphate (S1P). S1P is a bioactive lysophospholipid that elicits diverse physiological effect on most types of cells and tissues. When expressed in rat HTC4 hepatoma cells, is capable of mediating S1P-induced cell proliferation and suppression of apoptosis.
配列類似性	Belongs to the G-protein coupled receptor 1 family.
細胞内局在	Cell membrane.

画像



All lanes : Anti-S1PR2 antibody (ab235919) at 1/500 dilution

Lane 1 : MCF-7 whole cell lysate

Lane 2 : 293 whole cell lysate

Lane 3 : Ntera-2 whole cell lysate

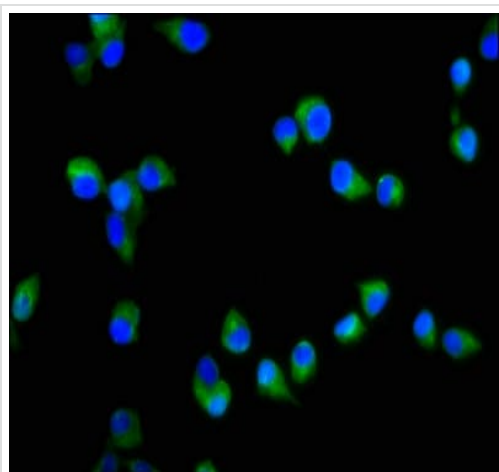
Secondary

All lanes : Goat polyclonal to rabbit IgG at 1/50000 dilution

Predicted band size: 39 kDa

Observed band size: 40 kDa

Exposure time: 5 minutes



Immunocytochemistry/ Immunofluorescence - Anti-S1PR2 antibody (ab235919)

4% formaldehyde-fixed, 0.2% Triton X-100 permeabilized SH-SY5Y (human neuroblastoma cell line from bone marrow) cells stained for S1PR2 (green) using ab235919 at 1/200 dilution in ICC/IF. Secondary antibody is Alexa Fluor[®] 488-conjugated AffiniPure Goat Anti-Rabbit IgG (H+L). Counter stained with DAPI.

Please note: All products are "FOR RESEARCH USE ONLY. NOT FOR USE IN DIAGNOSTIC PROCEDURES"

Our Abpromise to you: Quality guaranteed and expert technical support

- Replacement or refund for products not performing as stated on the datasheet
- Valid for 12 months from date of delivery
- Response to your inquiry within 24 hours
- We provide support in Chinese, English, French, German, Japanese and Spanish
- Extensive multi-media technical resources to help you
- We investigate all quality concerns to ensure our products perform to the highest standards

If the product does not perform as described on this datasheet, we will offer a refund or replacement. For full details of the Abpromise, please visit <https://www.abcam.co.jp/abpromise> or contact our technical team.

Terms and conditions

- Guarantee only valid for products bought direct from Abcam or one of our authorized distributors