

Anti-S100 Calcium Binding Protein A13/S100A13 antibody [EPR4510] ab109252

KO 評価済 リコンビナント RabMAb

1 References 画像数 8

製品の概要

製品名	Anti-S100 Calcium Binding Protein A13/S100A13 antibody [EPR4510]
製品の詳細	Rabbit monoclonal [EPR4510] to S100 Calcium Binding Protein A13/S100A13
由来種	Rabbit
アプリケーション	適用あり: WB, IP, IHC-P, Flow Cyt (Intra), ICC/IF
種交差性	交差種: Human
免疫原	Synthetic peptide. This information is proprietary to Abcam and/or its suppliers.
ポジティブ・コントロール	EB: HeLa, HEK293T, HUVEC and ECV304 cell lysates; Human thyroid and testis tissue lysates. IHC-P: Human brain and muscle tissues. ICC/IF: HUVEC cells Flow Cyt (intra): HUVEC cells IP: Human heart lysate.
特記事項	<p>This product is a recombinant monoclonal antibody, which offers several advantages including:</p> <ul style="list-style-type: none"> - High batch-to-batch consistency and reproducibility - Improved sensitivity and specificity - Long-term security of supply - Animal-free production <p>For more information see here.</p> <p>Our RabMAb[®] technology is a patented hybridoma-based technology for making rabbit monoclonal antibodies. For details on our patents, please refer to RabMAb[®] patents.</p> <p>Mouse, Rat: We have preliminary internal testing data to indicate this antibody may not react with these species. Please contact us for more information.</p>

製品の特性

製品の状態	Liquid
保存方法	Shipped at 4°C. Store at -20°C. Stable for 12 months at -20°C.
バッファー	<p>pH: 7.20</p> <p>Preservative: 0.05% Sodium azide</p> <p>Constituents: 0.1% BSA, 40% Glycerol (glycerin, glycerine), 9.85% Tris glycine, 50% Tissue culture supernatant</p>

精製度	Protein A purified
ポリ/モノ	モノクローナル
クローン名	EPR4510
アイソタイプ	IgG

アプリケーション

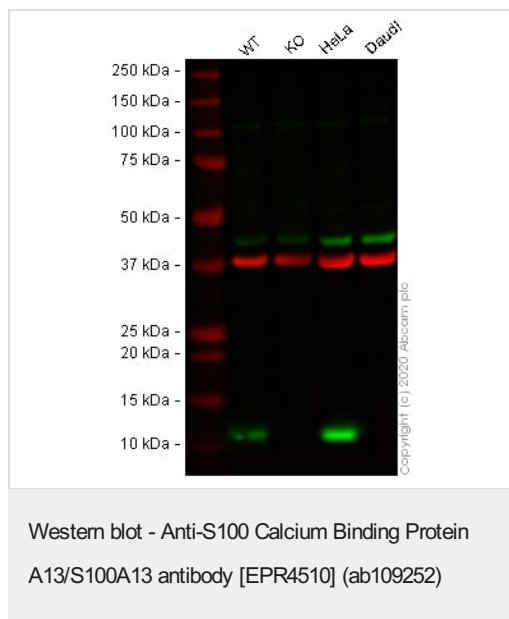
The Abpromise guarantee Abpromise保証は、 次のテスト済みアプリケーションにおけるab109252の使用に適用されます
 アプリケーションノートには、推奨の開始希釈率がありますが、適切な希釈率につきましてはご検討ください。

アプリケーション	Abreviews	特記事項
WB		1/1000 - 1/10000. Predicted molecular weight: 11 kDa.
IP		1/10 - 1/100.
IHC-P		1/250 - 1/500. Perform heat mediated antigen retrieval before commencing with IHC staining protocol. Use of a HRP/AP polymerized antibody recommended.
Flow Cyt (Intra)		1/10 - 1/100. ab172730 - Rabbit monoclonal IgG, is suitable for use as an isotype control with this antibody.
ICC/IF		1/100 - 1/250.

ターゲット情報

機能	Plays a role in the export of proteins that lack a signal peptide and are secreted by an alternative pathway. Binds two calcium ions per subunit. Binds one copper ion. Binding of one copper ion does not interfere with calcium binding. Required for the copper-dependent stress-induced export of IL1A and FGF1. The calcium-free protein binds to lipid vesicles containing phosphatidylserine, but not to vesicles containing phosphatidylcholine.
組織特異性	Expressed in heart and skeletal muscle.
配列類似性	Belongs to the S-100 family. Contains 2 EF-hand domains.
細胞内局在	Cytoplasm. Secreted. Secretion is mediated by exposure to stress and requires copper ions.

画像



All lanes : Anti-S100 Calcium Binding Protein A13/S100A13 antibody [EPR4510] (ab109252) at 1/1000 dilution

Lane 1 : Wild-type HEK-293T cell lysate

Lane 2 : S100A13 knockout HEK-293T cell lysate

Lane 3 : HeLa cell lysate

Lane 4 : Daudi cell lysate

Lysates/proteins at 20 µg per lane.

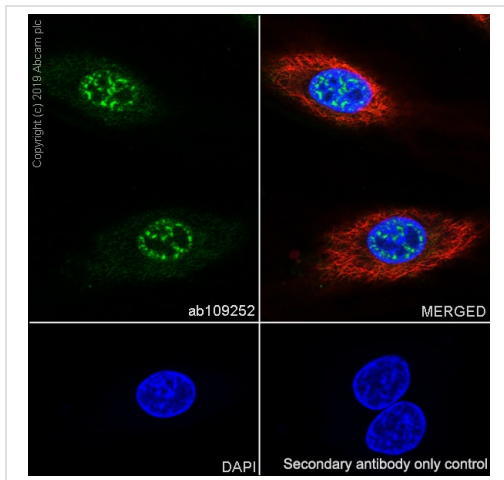
Performed under reducing conditions.

Predicted band size: 11 kDa

Observed band size: 13 kDa

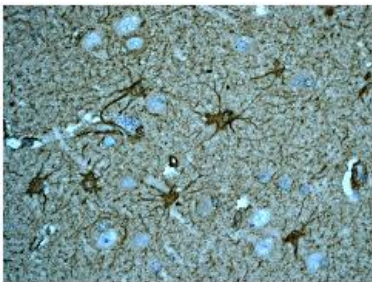
Lanes 1 - 4: Merged signal (red and green). Green - ab109252 observed at 13 kDa. Red - loading control **ab8245** (Mouse anti-GAPDH antibody [6C5]) observed at 37 kDa.

ab109252 was shown to react with S100 Calcium Binding Protein A13/S100A13 in wild-type HEK-293T cells in Western blot with loss of signal observed in S100A13 knockout cell line **ab266065** (S100A13 knockout cell lysate **ab258183**). Wild-type HEK-293T and S100A13 knockout cell lysates were subjected to SDS-PAGE. Membranes were blocked in 3 % milk in TBS-T (0.1 % Tween®) before incubation with ab109252 and **ab8245** (Mouse anti-GAPDH antibody [6C5]) overnight at 4°C at a 1 in 1000 dilution and a 1 in 20000 dilution respectively. Blots were incubated with Goat anti-Rabbit IgG H&L (IRDye® 800CW) preabsorbed (**ab216773**) and Goat anti-Mouse IgG H&L (IRDye® 680RD) preabsorbed (**ab216776**) secondary antibodies at 1 in 20000 dilution for 1 h at room temperature before imaging.



Immunocytochemistry/ Immunofluorescence - Anti-S100 Calcium Binding Protein A13/S100A13 antibody [EPR4510] (ab109252)

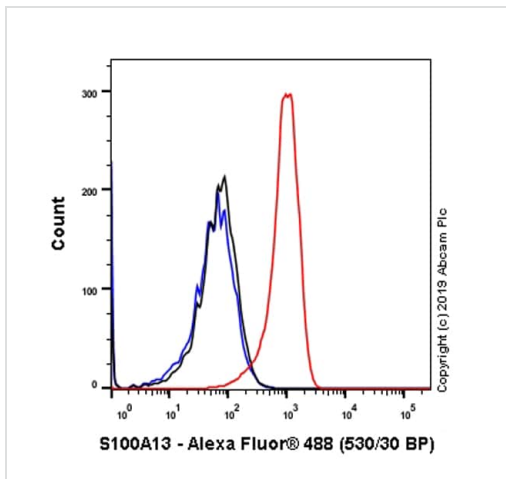
Immunocytochemistry/ Immunofluorescence analysis of HUVEC (human umbilical vein endothelial cell) cells labeling S100 Calcium Binding Protein A13/S100A13 with purified ab109252 at 1/100 dilution (10 µg/mL). Cells were fixed in 4% Paraformaldehyde and permeabilized with 0.1% tritonX-100. Cells were counterstained with **ab195889** Anti-alpha Tubulin antibody [DM1A] - Microtubule Marker (Alexa Fluor® 594) 1/200 (2.5 µg/mL). Goat anti rabbit IgG (Alexa Fluor® 488, **ab150077**) was used as the secondary antibody at 1/1000 (2 µg/mL) dilution. DAPI (blue) was used as nuclear counterstain. **ab195889** Anti-alpha Tubulin antibody [DM1A] - Microtubule Marker (Alexa Fluor® 594) 1/200 (2.5 µg/mL) was used as the secondary antibody only control.



Immunohistochemistry (Formalin/PFA-fixed paraffin-embedded sections) - Anti-S100 Calcium Binding Protein A13/S100A13 antibody [EPR4510] (ab109252)

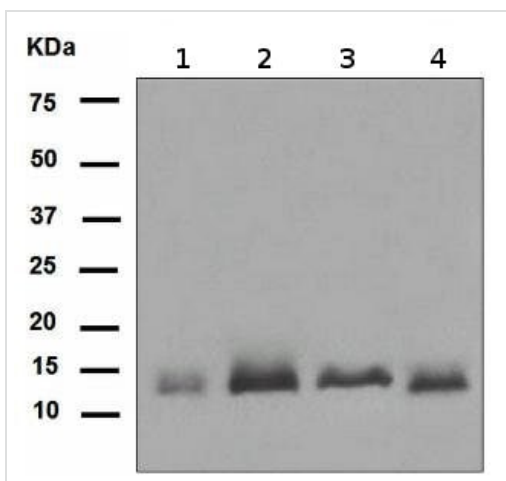
ab109252, at a 1/250 dilution, staining S100 Calcium Binding Protein A13/S100A13 in Human brain, by Immunohistochemistry, Paraffin-embedded tissue.

Perform heat mediated antigen retrieval before commencing with IHC staining protocol.



Intracellular Flow Cytometry analysis of HUVEC (Human umbilical vein endothelial cell) cells labeling S100 Calcium Binding Protein A13/S100A13 with purified ab109252 at 1/100 dilution (10 µg/mL) (Red). Cells were fixed with 4% Paraformaldehyde and permeabilised with 90% Methanol. A Goat anti rabbit IgG (Alexa Fluor® 488, [ab150077](#)) secondary antibody was used at 1/2000. Isotype control - Rabbit monoclonal IgG (Black). Unlabeled control - Cells without incubation with primary antibody and secondary antibody (Blue).

Flow Cytometry (Intracellular) - Anti-S100 Calcium Binding Protein A13/S100A13 antibody [EPR4510] (ab109252)



All lanes : Anti-S100 Calcium Binding Protein A13/S100A13 antibody [EPR4510] (ab109252) at 1/1000 dilution

Lane 1 : Human thyroid tissue lysate

Lane 2 : Human testis tissue lysate

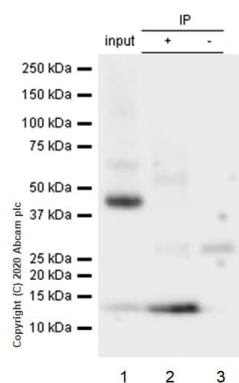
Lane 3 : HUVEC lysate

Lane 4 : ECV304 lysate

Lysates/proteins at 10 µg per lane.

Predicted band size: 11 kDa

Western blot - Anti-S100 Calcium Binding Protein A13/S100A13 antibody [EPR4510] (ab109252)



Immunoprecipitation - Anti-S100 Calcium Binding Protein A13/S100A13 antibody [EPR4510] (ab109252)

Purified ab109252 at 1/50 dilution (2µg) immunoprecipitating S100 Calcium Binding Protein A13/S100A13 in Human heart lysate.

Lane 1 (input): Human heart lysate 10µg

Lane 2 (+): ab109252 + Human heart lysate.

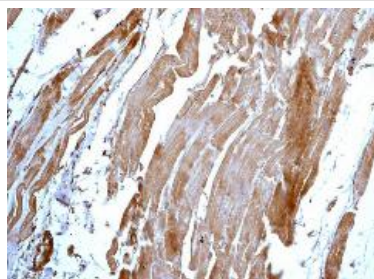
Lane 3 (-): Rabbit monoclonal IgG (**ab172730**) instead of ab109252 in Human heart lysate.

VeriBlot for IP Detection Reagent (HRP) (**ab131366**) (1/1000 dilution) was used for Western blotting.

Blocking Buffer and concentration: 5% NFDM/TBST.

Diluting buffer and concentration: 5% NFDM/TBST.

Observed band size: 11 kDa



Immunohistochemistry (Formalin/PFA-fixed paraffin-embedded sections) - Anti-S100 Calcium Binding Protein A13/S100A13 antibody [EPR4510] (ab109252)

ab109252, at a 1/250 dilution, staining S100 Calcium Binding Protein A13/S100A13 in Human muscle, by Immunohistochemistry, Paraffin-embedded tissue.

Perform heat mediated antigen retrieval before commencing with IHC staining protocol.

Why choose a recombinant antibody?



Research with confidence
Consistent and reproducible results



Long-term and scalable supply
Recombinant technology



Success from the first experiment
Confirmed specificity



Ethical standards compliant
Animal-free production

Anti-S100 Calcium Binding Protein A13/S100A13 antibody [EPR4510] (ab109252)

Our Abpromise to you: Quality guaranteed and expert technical support

- Replacement or refund for products not performing as stated on the datasheet
- Valid for 12 months from date of delivery
- Response to your inquiry within 24 hours
- We provide support in Chinese, English, French, German, Japanese and Spanish
- Extensive multi-media technical resources to help you
- We investigate all quality concerns to ensure our products perform to the highest standards

If the product does not perform as described on this datasheet, we will offer a refund or replacement. For full details of the Abpromise, please visit <https://www.abcam.co.jp/abpromise> or contact our technical team.

Terms and conditions

- Guarantee only valid for products bought direct from Abcam or one of our authorized distributors