

# Anti-S tag antibody ab19321

[11 References](#) [画像数 1](#)

### 製品の概要

---

|          |  |
|----------|--|
| 製品名      | Anti-S tag antibody  |
| 製品の詳細    | Goat polyclonal to S tag                                   |
| 由来種      | Goat   |
| アプリケーション | <b>適用あり:</b> ELISA, WB, ICC, ICC/IF                        |
| 種交差性     | <b>交差種:</b> Species independent                            |
| 免疫原      | Synthetic peptide:<br>KETAAAKFERQHMS<br>conjugated to KLH. |

 [Run BLAST with](#)

 [Run BLAST with](#)

### 特記事項

The Life Science industry has been in the grips of a reproducibility crisis for a number of years. Abcam is leading the way in addressing this with our range of recombinant monoclonal antibodies and knockout edited cell lines for gold-standard validation. Please check that this product meets your needs before purchasing.

If you have any questions, special requirements or concerns, please send us an inquiry and/or contact our Support team ahead of purchase. Recommended alternatives for this product can be found below, along with publications, customer reviews and Q&As

### 製品の特性

---

|        |   |
|--------|---|
| 製品の状態  | Liquid  |
| 保存方法   | Shipped at 4°C. Upon delivery aliquot and store at -20°C. Avoid freeze / thaw cycles. |
| バッファー  | pH: 6.8<br>Preservative: 0.1% Sodium azide<br>Constituent: PBS                        |
| 精製度    | Immunogen affinity purified   |
| ポリ/モノ  | ポリクローナル   |
| アイソタイプ | IgG   |

### アプリケーション

---

## The Abpromise guarantee

**Abpromise保証は、次のテスト済みアプリケーションにおけるab19321の使用に適用されます**

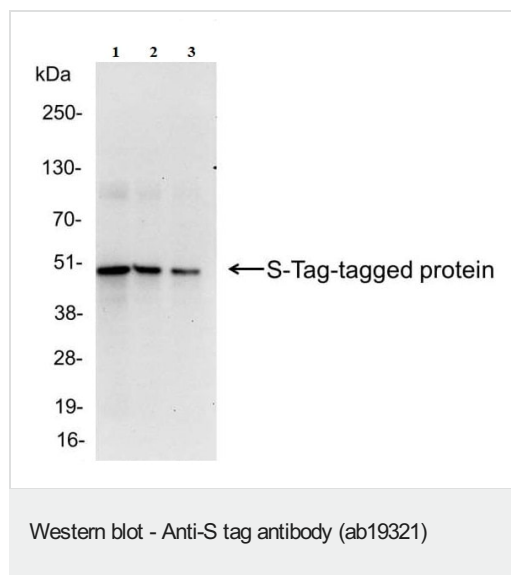
アプリケーションノートには、推奨の開始希釈率がありますが、適切な希釈率につきましてはご検討ください。

| アプリケーション | Abreviews | 特記事項  |
|----------|-----------|---|
| ELISA    |           | 1/100 - 1/500. Primary: 1/1000 - 1/30000.                 |
| WB       |           | 1/1000 - 1/30000. Predicted molecular weight: 23 kDa.     |
| ICC      |           | 1/100 - 1/400.  |
| ICC/IF   |           | Use at an assay dependent concentration. PubMed: 21518912 |

## ターゲット情報

**関連性** S tag is an epitope tag composed of a 15 residue peptide, KETAAAKFERQHMDs, derived from the pancreatic ribonuclease A.

## 画像



**All lanes :** Anti-S tag antibody (ab19321) at 0.04 µg/ml

**Lane 1 :** E. coli whole cell lysate expressing a multi-tag fusion protein at 0.2 µg

**Lane 2 :** E. coli whole cell lysate expressing a multi-tag fusion protein at 0.1 µg

**Lane 3 :** E. coli whole cell lysate expressing a multi-tag fusion protein at 0.05 µg

**Predicted band size:** 23 kDa

**Exposure time:** 30 seconds

**Please note:** All products are "FOR RESEARCH USE ONLY. NOT FOR USE IN DIAGNOSTIC PROCEDURES"

## Our Abpromise to you: Quality guaranteed and expert technical support

- Replacement or refund for products not performing as stated on the datasheet
- Valid for 12 months from date of delivery
- Response to your inquiry within 24 hours
- We provide support in Chinese, English, French, German, Japanese and Spanish
- Extensive multi-media technical resources to help you

- We investigate all quality concerns to ensure our products perform to the highest standards

If the product does not perform as described on this datasheet, we will offer a refund or replacement. For full details of the Abpromise, please visit <https://www.abcam.co.jp/abpromise> or contact our technical team.

### **Terms and conditions**

---

- Guarantee only valid for products bought direct from Abcam or one of our authorized distributors