

# Anti-RYBP antibody [EPR13059(2)] - ChIP Grade ab185971

リコンビナント RabMAb

★★★★☆ **1 Abreviews** **6 References** 画像数 14

### 製品の概要

製品名	Anti-RYBP antibody [EPR13059(2)] - ChIP Grade
製品の詳細	Rabbit monoclonal [EPR13059(2)] to RYBP - ChIP Grade
由来種	Rabbit
アプリケーション	<b>適用あり:</b> Flow Cyt (Intra), ChIP, IP, ICC/IF, IHC-P, WB
種交差性	<b>交差種:</b> Mouse, Rat, Human
免疫原	Synthetic peptide. This information is proprietary to Abcam and/or its suppliers.
ポジティブ・コントロール	K562, SW480, HepG2 and rat PC12 cell lysates; Human placenta and Human clear carcinoma of kidney tissues; HepG2, SW480 and K562 cells IP: NIH/3T3 cell lysates Flow Cyt (intra): A431 cells
特記事項	<p>This product is a recombinant monoclonal antibody, which offers several advantages including:</p> <ul style="list-style-type: none"><li>- High batch-to-batch consistency and reproducibility</li><li>- Improved sensitivity and specificity</li><li>- Long-term security of supply</li><li>- Animal-free production</li></ul> <p>For more information <a href="#">see here</a>.</p> <p>Our RabMAb<sup>®</sup> technology is a patented hybridoma-based technology for making rabbit monoclonal antibodies. For details on our patents, please refer to <a href="#">RabMAb<sup>®</sup> patents</a>.</p>

### 製品の特性

製品の状態	Liquid
保存方法	Shipped at 4°C. Store at +4°C short term (1-2 weeks). Upon delivery aliquot. Store at -20°C long term. Avoid freeze / thaw cycle.
バッファー	pH: 7.2 Preservative: 0.01% Sodium azide Constituents: 59% PBS, 40% Glycerol (glycerin, glycerine), 0.05% BSA
精製度	Protein A purified
ポリ/モノ	モノクローナル
クローン名	EPR13059(2)

アイソタイプ

IgG

## アプリケーション

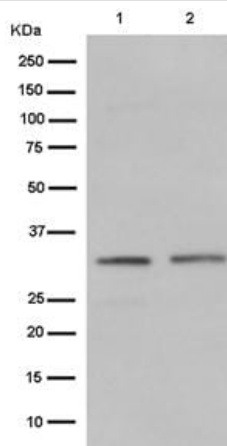
The Abpromise guarantee **Abpromise保証は、次のテスト済みアプリケーションにおけるab185971の使用に適用されず**  
アプリケーションノートには、推奨の開始希釈率がありますが、適切な希釈率につきましてはご検討ください。

アプリケーション	Abreviews	特記事項
Flow Cyt (Intra)		1/20 - 1/40. <b>ab172730</b> - Rabbit monoclonal IgG, is suitable for use as an isotype control with this antibody.
ChIP		Use at an assay dependent concentration.
IP		1/40 - 1/60.
ICC/IF	★★★★★ (1)	1/250.
IHC-P		1/50 - 1/100. Perform heat mediated antigen retrieval with citrate buffer pH 6 before commencing with IHC staining protocol.
WB		1/1000 - 1/10000. Detects a band of approximately 32 kDa (predicted molecular weight: 25 kDa).

## ターゲット情報

機能	May be implicated in the regulation of the transcription as a repressor of the transcriptional activity of E4TF1. In tumor cell lines, may induce apoptosis.
組織特異性	Widely expressed with highest levels in lymphoid tissues and placenta.
配列類似性	Contains 1 RanBP2-type zinc finger.
細胞内局在	Nucleus. Cytoplasm. Primarily found in the nucleus.

## 画像



Western blot - Anti-RYBP antibody [EPR13059(2)] - ChIP Grade (ab185971)

**All lanes :** Anti-RYBP antibody [EPR13059(2)] - ChIP Grade (ab185971) at 1/1000 dilution

**Lane 1 :** K562 cell lysate

**Lane 2 :** SW480 cell lysate

Lysates/proteins at 20 µg per lane.

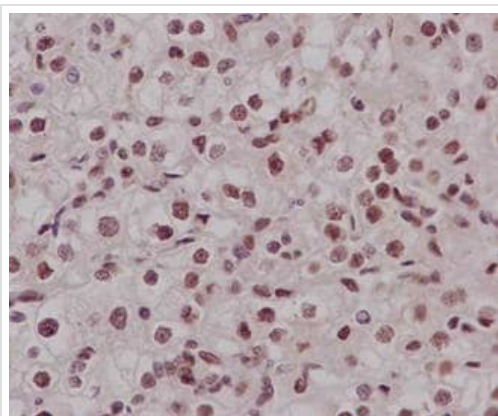
**Secondary**

**All lanes :** goat anti-rabbit IgG, (H+L), peroxidase conjugated at 1/1000 dilution

Developed using the ECL technique.

**Predicted band size:** 25 kDa

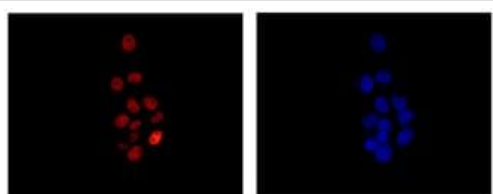
**Observed band size:** 32 kDa



Immunohistochemistry (Formalin/PFA-fixed paraffin-embedded sections) - Anti-RYBP antibody [EPR13059(2)] - ChIP Grade (ab185971)

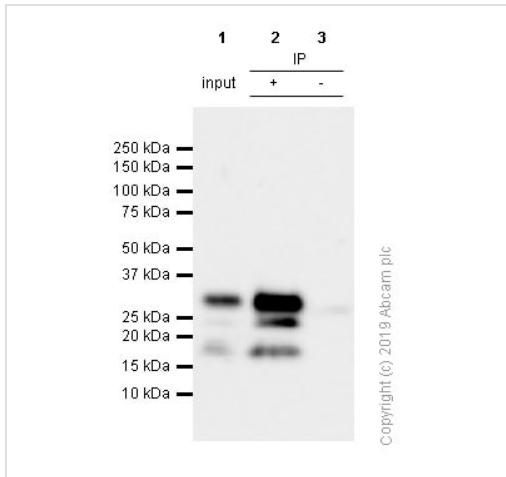
Immunohistochemical analysis of paraffin-embedded, Human clear cell carcinoma kidney tissue labeling RYBP with ab185971 at a 1/100 dilution. Counter stained with hematoxylin.

Perform heat mediated antigen retrieval with citrate buffer pH 6 before commencing with IHC staining protocol.



Immunocytochemistry/ Immunofluorescence - Anti-RYBP antibody [EPR13059(2)] - ChIP Grade (ab185971)

Immunofluorescence analysis of, paraformaldehyde-fixed, HepG2 cells labeling RYBP with ab185971 at a 1/250 dilution. As secondary antibody goat anti-rabbit IgG (Alexa Fluor®555) was used at a 1/200. In blue DAPI staining.



Immunoprecipitation - Anti-RYBP antibody [EPR13059(2)] - ChIP Grade (ab185971)

ab185971 (purified) at 1/20 dilution (11.7 µg/mL)  
immunoprecipitating RYBP in NIH/3T3 (Mouse embryonic fibroblast) whole cell lysate 10 µg.

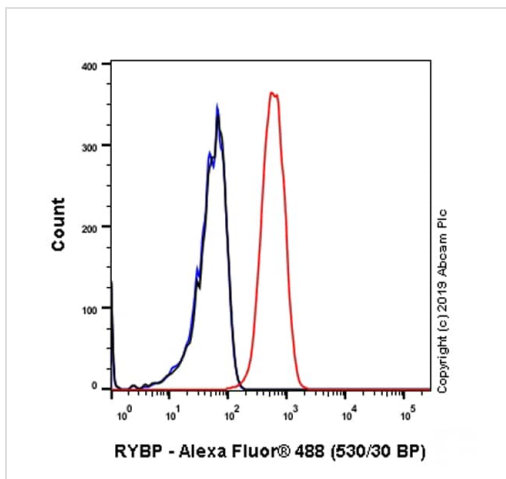
Lane 1 (input): NIH/3T3 (Mouse embryonic fibroblast) whole cell lysate 10 µg

Lane 2 (+): ab185971 & NIH/3T3 whole cell lysate

Lane 3 (-): Rabbit monoclonal IgG (**ab172730**) instead of ab185971 in NIH/3T3 whole cell lysate

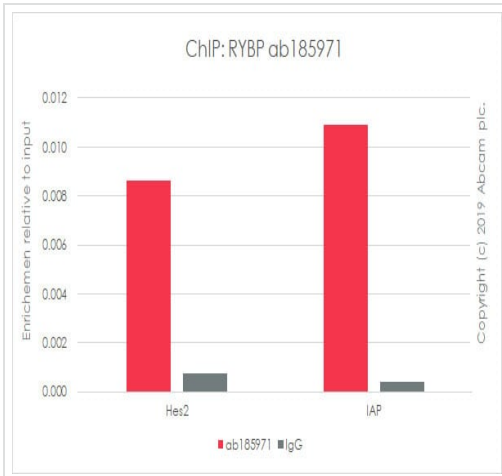
For western blotting, ab185971 at 1/500 dilution (0.468 µg/mL) and veriBlot for IP secondary antibody (HRP) (**ab131366**) at 1/1000 dilution was used.

Blocking and diluting buffer: 5% NFDm /TBST.



Flow Cytometry (Intracellular) - Anti-RYBP antibody [EPR13059(2)] - ChIP Grade (ab185971)

Intracellular Flow Cytometry analysis of A431 (Human epidermoid carcinoma epithelial cell) cells labeling RYBP with purified ab185971 at 1/20 dilution (11.7 µg/mL) (Red). Cells were fixed with 4% paraformaldehyde and permeabilised with 90% methanol. A Goat anti rabbit IgG (Alexa Fluor® 488, **ab150077**) secondary antibody was used at 1/2000 dilution. Isotype control - Rabbit monoclonal IgG (**ab172730**) (black). Unlabeled control - Unlabelled cells (blue).



ChIP - Anti-RYBP antibody [EPR13059(2)] - ChIP Grade (ab185971)

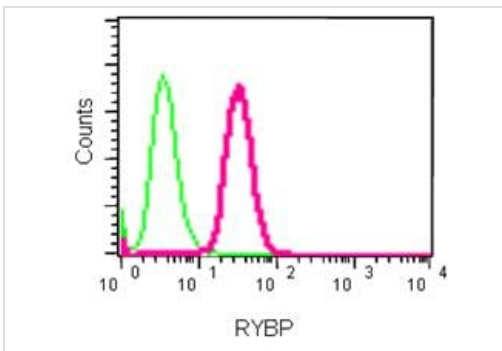
Chromatin was prepared from NIH/3T3 cells according to the Abcam Dual X-ChIP protocol\*. Cells were fixed with EGS for 30 minutes, then formaldehyde for 10 minutes.

The ChIP was performed with 25 µg of chromatin, 5 µg of ab185971 (red), and 20 µl of Protein A/G sepharose beads. 5 µg of rabbit normal IgG was added to the beads control (gray). The immunoprecipitated DNA was quantified by real time PCR (Sybr green approach).

Primers and probes are located in the first kb of the transcribed region.

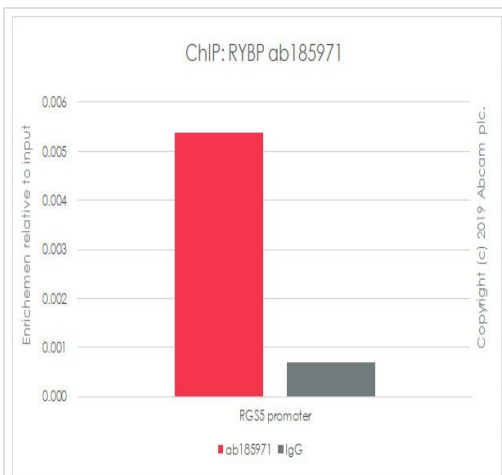
\*[http://www.abcam.com/resources?](http://www.abcam.com/resources?keywords=X%20ChIP%20protocol)

keywords=X%20ChIP%20protocol



Flow Cytometry (Intracellular) - Anti-RYBP antibody [EPR13059(2)] - ChIP Grade (ab185971)

Intracellular Flow Cytometry analysis of paraformaldehyde-fixed K562 cells labeling RYBP with ab185971 at a 1/40 dilution and secondary antibody goat anti-rabbit IgG (FITC, red) at a 1/150 dilution, or negative control rabbit IgG (green).



ChIP - Anti-RYBP antibody [EPR13059(2)] - ChIP Grade (ab185971)

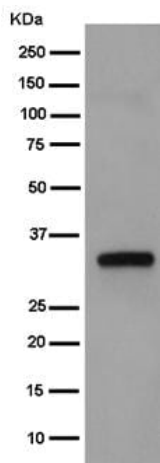
Chromatin was prepared from HEK293 cells according to the Abcam Dual X-ChIP protocol\*. Cells were fixed with EGS for 30 minutes, then formaldehyde for 10 minutes.

The ChIP was performed with 25 µg of chromatin, 5 µg of ab185971 (red), and 20 µl of Protein A/G sepharose beads. 5 µg of rabbit normal IgG was added to the beads control (gray). The immunoprecipitated DNA was quantified by real time PCR (Sybr green approach).

Primers and probes are located in the first kb of the transcribed region.

\*[http://www.abcam.com/resources?](http://www.abcam.com/resources?keywords=X%20ChIP%20protocol)

keywords=X%20ChIP%20protocol



Western blot - Anti-RYBP antibody [EPR13059(2)] - ChIP Grade (ab185971)

Anti-RYBP antibody [EPR13059(2)] - ChIP Grade (ab185971) at 1/10000 dilution + HepG2 cell lysate at 20  $\mu$ g

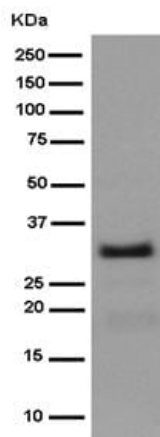
**Secondary**

goat anti-rabbit IgG, (H+L), peroxidase conjugated at 1/1000 dilution

Developed using the ECL technique.

**Predicted band size:** 25 kDa

**Observed band size:** 32 kDa



Western blot - Anti-RYBP antibody [EPR13059(2)] - ChIP Grade (ab185971)

Anti-RYBP antibody [EPR13059(2)] - ChIP Grade (ab185971) at 1/1000 dilution + rat PC12 cell lysate at 10  $\mu$ g

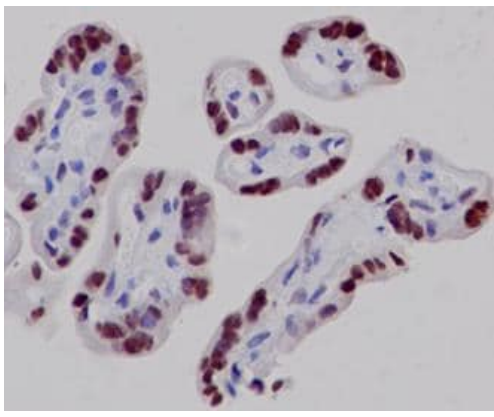
**Secondary**

goat anti-rabbit IgG, (H+L), peroxidase conjugated at 1/1000 dilution

Developed using the ECL technique.

**Predicted band size:** 25 kDa

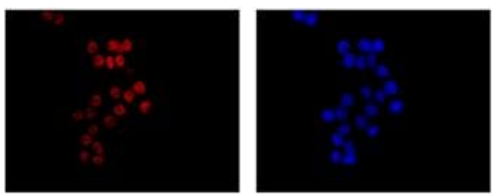
**Observed band size:** 32 kDa



Immunohistochemistry (Formalin/PFA-fixed paraffin-embedded sections) - Anti-RYBP antibody [EPR13059(2)] - ChIP Grade (ab185971)

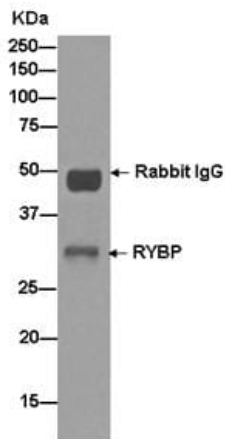
Immunohistochemical analysis of paraffin-embedded, Human placenta tissue labeling RYBP with ab185971 at a 1/100 dilution. Counter stained with hematoxylin.

Perform heat mediated antigen retrieval with citrate buffer pH 6 before commencing with IHC staining protocol.



Immunocytochemistry/ Immunofluorescence - Anti-RYBP antibody [EPR13059(2)] - ChIP Grade (ab185971)

Immunofluorescence analysis of, paraformaldehyde-fixed, SW480 cells labeling RYBP with ab185971 at a 1/250 dilution. As secondary antibody goat anti-rabbit IgG (Alexa Fluor®555) was used at a 1/200. In blue DAPI staining.



Immunoprecipitation - Anti-RYBP antibody [EPR13059(2)] - ChIP Grade (ab185971)

Western blot analysis on immunoprecipitation pellet from HepG2 cell lysate labeling RYBP with ab185971 at 1/50 dilution and goat anti-rabbit IgG, (H+L), peroxidase conjugated at a 1/1000 dilution.

### Why choose a recombinant antibody?



**Research with confidence**  
Consistent and reproducible results



**Long-term and scalable supply**  
Recombinant technology



**Success from the first experiment**  
Confirmed specificity



**Ethical standards compliant**  
Animal-free production

Anti-RYBP antibody [EPR13059(2)] - ChIP Grade  
(ab185971)

**Please note:** All products are "FOR RESEARCH USE ONLY. NOT FOR USE IN DIAGNOSTIC PROCEDURES"

### Our Abpromise to you: Quality guaranteed and expert technical support

---

- Replacement or refund for products not performing as stated on the datasheet
- Valid for 12 months from date of delivery
- Response to your inquiry within 24 hours
- We provide support in Chinese, English, French, German, Japanese and Spanish
- Extensive multi-media technical resources to help you
- We investigate all quality concerns to ensure our products perform to the highest standards

If the product does not perform as described on this datasheet, we will offer a refund or replacement. For full details of the Abpromise, please visit <https://www.abcam.co.jp/abpromise> or contact our technical team.

### Terms and conditions

---

- Guarantee only valid for products bought direct from Abcam or one of our authorized distributors