

### Anti-RPS6 antibody [EPR22168] - Ribosome Marker ab225676

リコンビナント RabMAb<sup>®</sup>

★★★★★ **1 Abreviews** **3 References** 画像数 10

#### 製品の概要

製品名	Anti-RPS6 antibody [EPR22168] - Ribosome Marker
製品の詳細	Rabbit monoclonal [EPR22168] to RPS6 - Ribosome Marker
由来種	Rabbit
アプリケーション	<b>適用あり:</b> Flow Cyt (Intra), WB, ICC/IF, IHC-P
種交差性	<b>交差種:</b> Mouse, Rat, Human
免疫原	Synthetic peptide. This information is proprietary to Abcam and/or its suppliers.
ポジティブ・コントロール	WB: HeLa, MCF7, HepG2, HEK-293T, HCT 116, PC-12 and NIH/3T3 whole cell lysates; Mouse heart, kidney and spleen lysates; Rat brain lysate; Human brain, fetal heart and fetal kidney lysate. IHC-P: Human cerebral cortex and breast cancer tissues; Mouse cerebrum tissue; Rat cerebellum tissue. ICC/IF: HeLa and NIH/3T3 cells. Flow Cyt (intra): HeLa cells.
特記事項	<p>This product is a recombinant monoclonal antibody, which offers several advantages including:</p> <ul style="list-style-type: none"> <li>- High batch-to-batch consistency and reproducibility</li> <li>- Improved sensitivity and specificity</li> <li>- Long-term security of supply</li> <li>- Animal-free production</li> </ul> <p>For more information <a href="#">see here</a>.</p> <p>Our RabMAb<sup>®</sup> technology is a patented hybridoma-based technology for making rabbit monoclonal antibodies. For details on our patents, please refer to <a href="#">RabMAb<sup>®</sup> patents</a>.</p>

#### 製品の特性

製品の状態	Liquid
保存方法	Shipped at 4°C. Store at +4°C short term (1-2 weeks). Upon delivery aliquot. Store at -20°C long term. Avoid freeze / thaw cycle.
バッファー	pH: 7.2 Preservative: 0.01% Sodium azide Constituents: PBS, 40% Glycerol (glycerin, glycerine), 0.05% BSA
精製度	Protein A purified
ポリクローナル	モノクローナル
クローン名	EPR22168

アイソタイプ

IgG

## アプリケーション

**The Abpromise guarantee** Abpromise保証は、次のテスト済みアプリケーションにおけるab225676の使用に適用されます  
アプリケーションノートには、推奨の開始希釈率がありますが、適切な希釈率につきましてはご検討ください。

アプリケーション	Abreviews	特記事項
Flow Cyt (Intra)		1/600.
WB	★★★★★ (1)	1/1000. Detects a band of approximately 29 kDa (predicted molecular weight: 29 kDa).
ICC/IF		1/500.
IHC-P		1/1000. Perform heat mediated antigen retrieval with Tris/EDTA buffer pH 9.0 before commencing with IHC staining protocol.

## ターゲット情報

### 機能

May play an important role in controlling cell growth and proliferation through the selective translation of particular classes of mRNA.

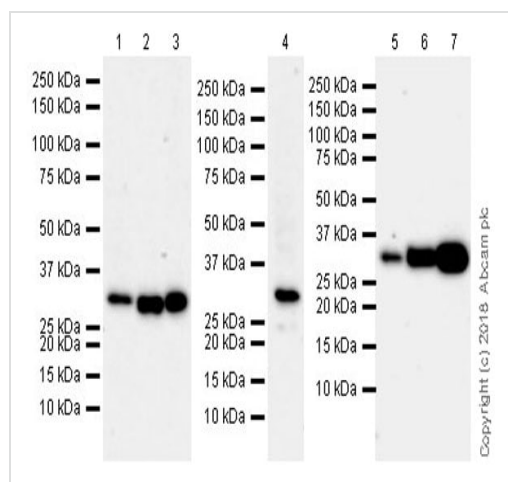
### 配列類似性

Belongs to the ribosomal protein S6e family.

### 翻訳後修飾

Ribosomal protein S6 is the major substrate of protein kinases in eukaryote ribosomes. The phosphorylation is stimulated by growth factors, tumor promoting agents, and mitogens. It is dephosphorylated at growth arrest.

## 画像



Western blot - Anti-RPS6 antibody [EPR22168] - Ribosome Marker (ab225676)

**All lanes** : Anti-RPS6 antibody [EPR22168] - Ribosome Marker (ab225676) at 1/1000 dilution

- Lane 1** : Mouse heart lysate
- Lane 2** : Mouse kidney lysate
- Lane 3** : Mouse spleen lysate
- Lane 4** : Rat brain lysate
- Lane 5** : Human brain lysate
- Lane 6** : Human fetal heart lysate
- Lane 7** : Human fetal kidney lysate

Lysates/proteins at 10 µg per lane.

### Secondary

**All lanes** : Goat Anti-Rabbit IgG H&L (HRP) (**ab97051**) at

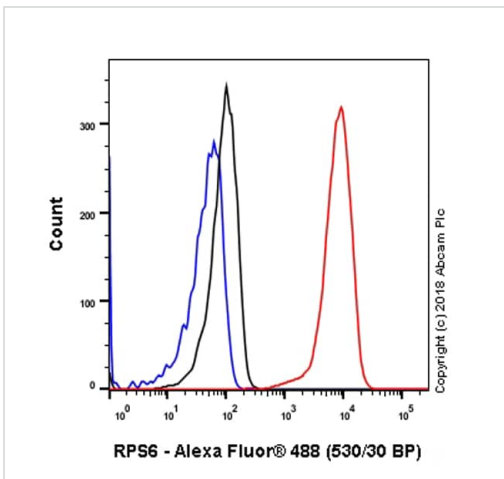
1/100000 dilution

**Predicted band size:** 29 kDa

**Observed band size:** 29 kDa

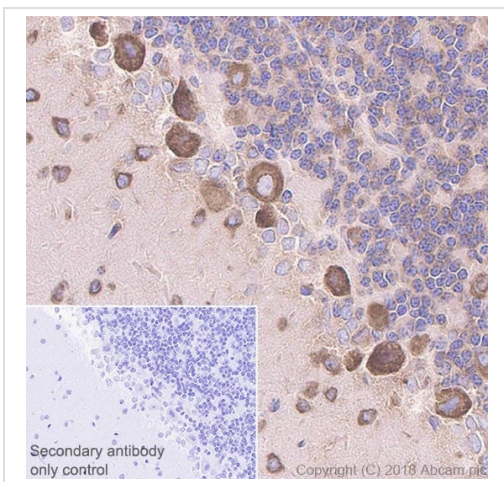
**Exposure time:** 3 minutes

Blocking/Dilution buffer: 5% NFD/MBST.



Flow Cytometry (Intracellular) - Anti-RPS6 antibody  
[EPR22168] - Ribosome Marker (ab225676)

Intracellular flow cytometric analysis of 4% paraformaldehyde-fixed, 90% methanol-permeabilized HeLa (human epithelial cell line from cervix adenocarcinoma) cell line labeling RPS6 with ab225676 at 1/600 dilution (red) compared with a Rabbit IgG, monoclonal [EPR25A] - Isotype Control (**ab172730**) (black) and an unlabeled control (cells without incubation with primary antibody and secondary antibody) (blue). Goat Anti-Rabbit IgG H&L (Alexa Fluor<sup>®</sup> 488) (**ab150077**) at 1/2000 dilution was used as the secondary antibody.

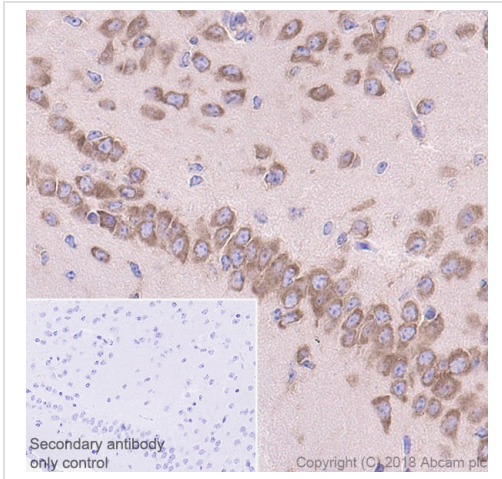


Immunohistochemistry (Formalin/PFA-fixed paraffin-embedded sections) - Anti-RPS6 antibody  
[EPR22168] - Ribosome Marker (ab225676)

Immunohistochemical analysis of paraffin-embedded rat cerebellum tissue labeling RPS6 with ab225676 at 1/1000 dilution, followed by Goat Anti-Rabbit IgG H&L (HRP) Ready to use. Cytoplasmic staining predominantly in neurons of the rat cerebellum (PMID: 26432888). Counter stained with hematoxylin.

Secondary antibody only control: Used PBS instead of primary antibody, secondary antibody is Goat Anti-Rabbit IgG H&L (HRP) Ready to use.

Perform heat mediated antigen retrieval with Tris/EDTA buffer pH 9.0 before commencing with IHC staining protocol.



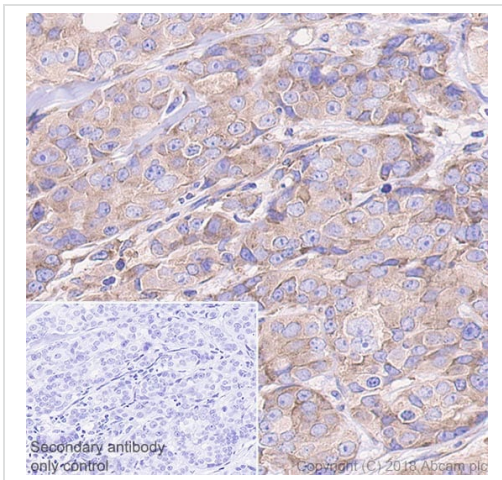
Immunohistochemical analysis of paraffin-embedded mouse cerebrum tissue labeling RPS6 with ab225676 at 1/1000 dilution, followed by Goat Anti-Rabbit IgG H&L (HRP) Ready to use.

Cytoplasmic staining predominantly in neurons of the mouse cerebrum (PMID: 26432888). Counter stained with hematoxylin.

Secondary antibody only control: Used PBS instead of primary antibody, secondary antibody is Goat Anti-Rabbit IgG H&L (HRP) Ready to use.

Perform heat mediated antigen retrieval with Tris/EDTA buffer pH 9.0 before commencing with IHC staining protocol.

Immunohistochemistry (Formalin/PFA-fixed paraffin-embedded sections) - Anti-RPS6 antibody [EPR22168] - Ribosome Marker (ab225676)



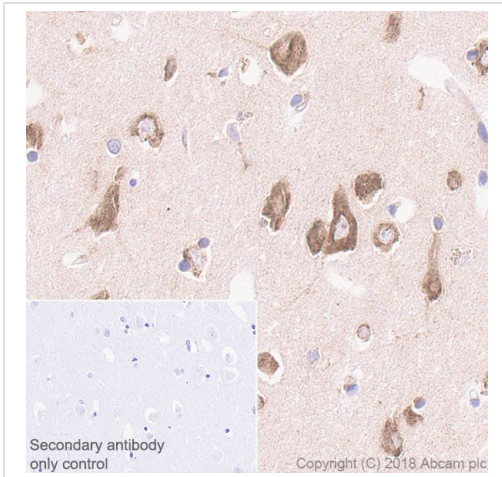
Immunohistochemical analysis of paraffin-embedded human breast cancer tissue labeling RPS6 with ab225676 at 1/1000 dilution, followed by Goat Anti-Rabbit IgG H&L (HRP) Ready to use.

Cytoplasmic staining in human breast cancer (PMID: 22698676). Counter stained with hematoxylin.

Secondary antibody only control: Used PBS instead of primary antibody, secondary antibody is Goat Anti-Rabbit IgG H&L (HRP) Ready to use.

Perform heat mediated antigen retrieval with Tris/EDTA buffer pH 9.0 before commencing with IHC staining protocol.

Immunohistochemistry (Formalin/PFA-fixed paraffin-embedded sections) - Anti-RPS6 antibody [EPR22168] - Ribosome Marker (ab225676)

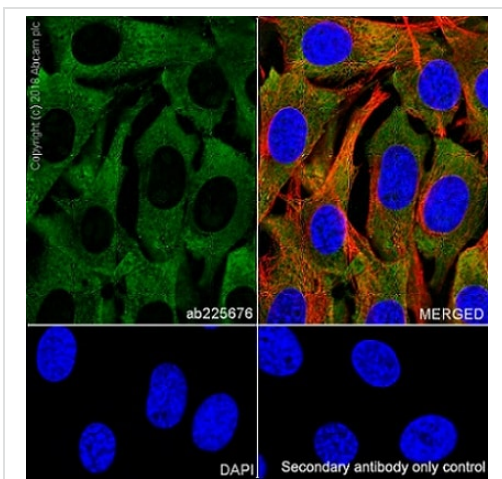


Immunohistochemistry (Formalin/PFA-fixed paraffin-embedded sections) - Anti-RPS6 antibody [EPR22168] - Ribosome Marker (ab225676)

Immunohistochemical analysis of paraffin-embedded human cerebral cortex tissue labeling RPS6 with ab225676 at 1/1000 dilution, followed by Goat Anti-Rabbit IgG H&L (HRP) Ready to use. Cytoplasmic staining predominantly in neurons of the human cerebral cortex (PMID: 26432888). Counter stained with hematoxylin.

Secondary antibody only control: Used PBS instead of primary antibody, secondary antibody is Goat Anti-Rabbit IgG H&L (HRP) Ready to use.

Perform heat mediated antigen retrieval with Tris/EDTA buffer pH 9.0 before commencing with IHC staining protocol.

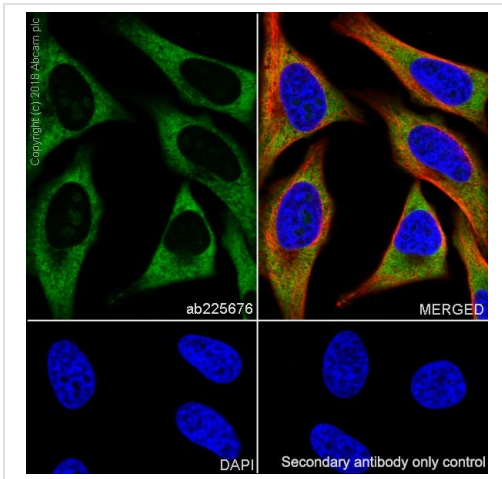


Immunocytochemistry/ Immunofluorescence - Anti-RPS6 antibody [EPR22168] - Ribosome Marker (ab225676)

Immunofluorescent analysis of 4% paraformaldehyde-fixed, 0.1% Triton X-100 permeabilized NIH/3T3 (Mouse embryo fibroblast cell line) cells labeling RPS6 with ab225676 at 1/500 dilution followed by Goat Anti-Rabbit IgG H&L (Alexa Fluor<sup>®</sup> 488) ([ab150077](#)) secondary antibody at 1/1000 dilution (green). Confocal image showing cytoplasmic staining in the NIH/3T3 cell line.

The nuclear counter stain is DAPI (blue). Tubulin is detected with Anti-alpha Tubulin antibody [DM1A] - Microtubule Marker (Alexa Fluor<sup>®</sup> 594) ([ab195889](#)) (red) at 1/200 dilution.

Secondary antibody only control: Used PBS instead of primary antibody, secondary antibody is Goat Anti-Rabbit IgG H&L (Alexa Fluor<sup>®</sup> 488) ([ab150077](#)) secondary antibody at 1/1000 dilution.

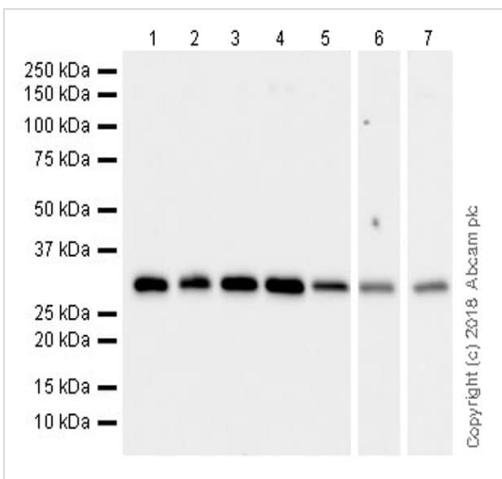


Immunocytochemistry/ Immunofluorescence - Anti-RPS6 antibody [EPR22168] - Ribosome Marker (ab225676)

Immunofluorescent analysis of 4% paraformaldehyde-fixed, 0.1% Triton X-100 permeabilized HeLa (Human epithelial cell line from cervix adenocarcinoma) cells labeling RPS6 with ab225676 at 1/500 dilution followed by Goat Anti-Rabbit IgG H&L (Alexa Fluor<sup>®</sup> 488) ([ab150077](#)) secondary antibody at 1/1000 dilution (green). Confocal image showing cytoplasmic staining in the HeLa cell line.

The nuclear counter stain is DAPI (blue). Tubulin is detected with Anti-alpha Tubulin antibody [DM1A] - Microtubule Marker (Alexa Fluor<sup>®</sup> 594) ([ab195889](#)) (red) at 1/200 dilution.

Secondary antibody only control: Used PBS instead of primary antibody, secondary antibody is Goat Anti-Rabbit IgG H&L (Alexa Fluor<sup>®</sup> 488) ([ab150077](#)) secondary antibody at 1/1000 dilution.



Western blot - Anti-RPS6 antibody [EPR22168] - Ribosome Marker (ab225676)

**All lanes** : Anti-RPS6 antibody [EPR22168] - Ribosome Marker (ab225676) at 1/1000 dilution

**Lane 1** : HeLa (human epithelial cell line from cervix adenocarcinoma) whole cell lysate

**Lane 2** : MCF7 (human breast adenocarcinoma cell line) whole cell lysate

**Lane 3** : HepG2 (human liver hepatocellular carcinoma cell line) whole cell lysate

**Lane 4** : HEK-293T (human epithelial cell line from embryonic kidney transformed with large T antigen) whole cell lysate

**Lane 5** : HCT 116 (human colorectal carcinoma cell line) whole cell lysate

**Lane 6** : PC-12 (rat adrenal gland pheochromocytoma cell line) whole cell lysate

**Lane 7** : NIH/3T3 (mouse embryo fibroblast cell line) whole cell lysate

Lysates/proteins at 20 µg per lane.

### Secondary

**All lanes** : Goat Anti-Rabbit IgG H&L (HRP) ([ab97051](#)) at 1/100000 dilution

**Predicted band size:** 29 kDa

**Observed band size:** 29 kDa

**Exposure time** : Lanes 1-6: 26 seconds; Lane 7: 10 seconds.

Blocking/Dilution buffer: 5% NFDN/TBST.

Why choose a recombinant antibody?



**Research with confidence**  
Consistent and reproducible results

**Long-term and scalable supply**  
Recombinant technology

**Success from the first experiment**  
Confirmed specificity

**Ethical standards compliant**  
Animal-free production

Anti-RPS6 antibody [EPR22168] - Ribosome Marker  
(ab225676)

**Please note:** All products are "FOR RESEARCH USE ONLY. NOT FOR USE IN DIAGNOSTIC PROCEDURES"

### Our Abpromise to you: Quality guaranteed and expert technical support

---

- Replacement or refund for products not performing as stated on the datasheet
- Valid for 12 months from date of delivery
- Response to your inquiry within 24 hours
- We provide support in Chinese, English, French, German, Japanese and Spanish
- Extensive multi-media technical resources to help you
- We investigate all quality concerns to ensure our products perform to the highest standards

If the product does not perform as described on this datasheet, we will offer a refund or replacement. For full details of the Abpromise, please visit <https://www.abcam.co.jp/abpromise> or contact our technical team.

### Terms and conditions

---

- Guarantee only valid for products bought direct from Abcam or one of our authorized distributors