


Anti-RPL26 antibody ab84359

画像数 2

製品の概要

製品名	Anti-RPL26 antibody
製品の詳細	Rabbit polyclonal to RPL26
由来種	Rabbit
アプリケーション	適用あり: IHC-P
種交差性	交差種: Human 交差が予測される動物種: Mouse, Rat, Rabbit, Horse, Chicken, Guinea pig, Cow, Turkey, Pig, Xenopus laevis, Chimpanzee, Zebrafish, Rhesus monkey, Gorilla, Xenopus tropicalis 
免疫原	Synthetic peptide corresponding to Human RPL26 aa 100-145 (C terminal). Database link: NP_000978.1
ポジティブ・コントロール	Ovarian carcinoma; human skin basal cell carcinoma
特記事項	<p>The Life Science industry has been in the grips of a reproducibility crisis for a number of years. Abcam is leading the way in addressing this with our range of recombinant monoclonal antibodies and knockout edited cell lines for gold-standard validation. Please check that this product meets your needs before purchasing.</p> <p>If you have any questions, special requirements or concerns, please send us an inquiry and/or contact our Support team ahead of purchase. Recommended alternatives for this product can be found below, along with publications, customer reviews and Q&As</p>

製品の特性

製品の状態	Liquid
保存方法	Shipped at 4°C. Upon delivery aliquot and store at -20°C. Avoid freeze / thaw cycles.
バッファー	pH: 6.8 Preservative: 0.09% Sodium azide Constituents: 0.1% BSA, Tris buffered saline
精製度	Immunogen affinity purified
ポリ/モノ	ポリクローナル
アイソタイプ	IgG

アプリケーション

The Abpromise guarantee

Abpromise保証は、次のテスト済みアプリケーションにおけるab84359の使用に適用されます

アプリケーションノートには、推奨の開始希釈率がありますが、適切な希釈率につきましてはご確認ください。

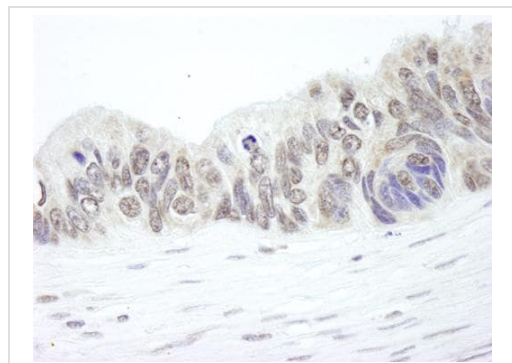
アプリケーション	Abreviews	特記事項
IHC-P		1/100 - 1/500. Epitope exposure is recommended. Epitope exposure with citrate buffer will enhance staining.

ターゲット情報

配列類似性

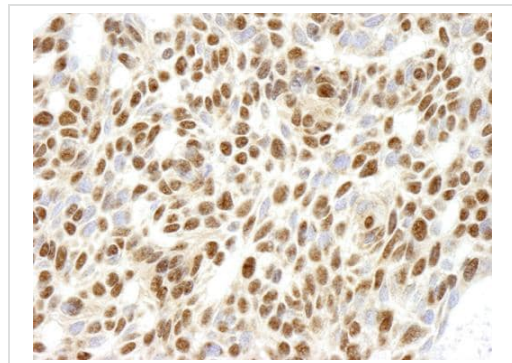
Belongs to the ribosomal protein L24P family.

画像



Immunohistochemistry (Formalin/PFA-fixed paraffin-embedded sections) - Anti-RPL26 antibody (ab84359)

Detection of Human RPL26 in formalin-fixed paraffin-embedded section of human ovarian carcinoma by Immunohistochemistry using ab84359 at a dilution of 1:500. Detection was performed by DAB staining using anti-Rabbit IHC antibody at a dilution of 1:100.



Immunohistochemistry (Formalin/PFA-fixed paraffin-embedded sections) - Anti-RPL26 antibody (ab84359)

Detection of Human RPL26 in formalin-fixed paraffin-embedded section of human skin basal cell carcinoma by Immunohistochemistry using ab84359 at a dilution of 1:250. Detection was performed by DAB staining using anti-Rabbit IHC antibody at a dilution of 1:100.

Please note: All products are "FOR RESEARCH USE ONLY. NOT FOR USE IN DIAGNOSTIC PROCEDURES"

Our Abpromise to you: Quality guaranteed and expert technical support

- Replacement or refund for products not performing as stated on the datasheet
- Valid for 12 months from date of delivery
- Response to your inquiry within 24 hours

- We provide support in Chinese, English, French, German, Japanese and Spanish
- Extensive multi-media technical resources to help you
- We investigate all quality concerns to ensure our products perform to the highest standards

If the product does not perform as described on this datasheet, we will offer a refund or replacement. For full details of the Abpromise, please visit <https://www.abcam.co.jp/abpromise> or contact our technical team.

Terms and conditions

- Guarantee only valid for products bought direct from Abcam or one of our authorized distributors