


Anti-RPA70 antibody ab12320

6 References [画像数 2](#)

製品の概要

製品名	Anti-RPA70 antibody
製品の詳細	Rabbit polyclonal to RPA70
由来種	Rabbit
アプリケーション	適用あり: IHC-P, WB
種交差性	交差種: Mouse, Human 交差が予測される動物種: Rabbit, Chimpanzee, Rhesus monkey, Gorilla, Opossum, Orangutan 
免疫原	Immunogen was a synthetic peptide, which represented a portion of human replication protein A1, 70kDa encoded within exon 12 (LocusLink ID 6117).
特記事項	<p>The Life Science industry has been in the grips of a reproducibility crisis for a number of years. Abcam is leading the way in addressing this with our range of recombinant monoclonal antibodies and knockout edited cell lines for gold-standard validation. Please check that this product meets your needs before purchasing.</p> <p>If you have any questions, special requirements or concerns, please send us an inquiry and/or contact our Support team ahead of purchase. Recommended alternatives for this product can be found below, along with publications, customer reviews and Q&As</p>

製品の特性

製品の状態	Liquid
保存方法	Shipped at 4°C. Upon delivery aliquot and store at -20°C. Avoid freeze / thaw cycles.
バッファー	pH: 7 Preservative: 0.1% Sodium azide Constituents: 0.021% PBS, 1.764% Sodium citrate, 1.815% Tris
精製度	Immunogen affinity purified
特記事項(精製)	Purified using the peptide immobilized on solid support.
ポリ/モノ	ポリクローナル
アイソタイプ	IgG

アプリケーション

The Abpromise guarantee

Abpromise保証は、次のテスト済みアプリケーションにおけるab12320の使用に適用されず

アプリケーションノートには、推奨の開始希釈率がありますが、適切な希釈率につきましてはご検討ください。

アプリケーション	Abreviews	特記事項
IHC-P		1/500 - 1/2000. Perform heat mediated antigen retrieval with Tris/EDTA buffer pH 9.0 before commencing with IHC staining protocol.
WB		1/5000 - 1/25000. Detects a band of approximately 74 kDa (predicted molecular weight: 74 kDa).

ターゲット情報

機能

Plays an essential role in several cellular processes in DNA metabolism including replication, recombination and DNA repair. Binds and subsequently stabilizes single-stranded DNA intermediates and thus prevents complementary DNA from reannealing.

Functions as component of the alternative replication protein A complex (aRPA). aRPA binds single-stranded DNA and probably plays a role in DNA repair; it does not support chromosomal DNA replication and cell cycle progression through S-phase. In vitro, aRPA cannot promote efficient priming by DNA polymerase alpha but supports DNA polymerase delta synthesis in the presence of PCNA and replication factor C (RFC), the dual incision/excision reaction of nucleotide excision repair and RAD51-dependent strand exchange.

配列類似性

Belongs to the replication factor A protein 1 family.

翻訳後修飾

Phosphorylated upon DNA damage, probably by ATM or ATR.

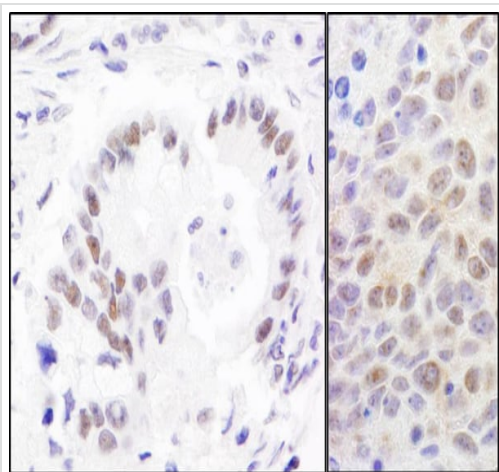
Sumoylated on lysine residues Lys-449 and Lys-577, with Lys-449 being the major site.

Sumoylation promotes recruitment of RAD51 to the DNA damage foci to initiate DNA repair through homologous recombination. Desumoylated by SENP6.

細胞内局在

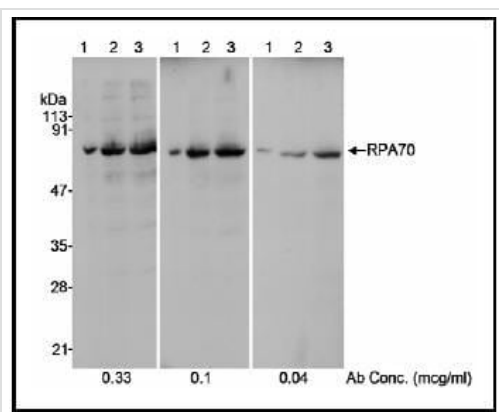
Nucleus.

画像



Immunohistochemistry (Formalin/PFA-fixed paraffin-embedded sections) - Anti-RPA70 antibody (ab12320)

Immunohistochemistry (Formalin/PFA-fixed paraffin-embedded sections) analysis of human stomach carcinoma (left) and mouse CT26 colon carcinoma (right) tissues labelling RPA70 with ab12320 at 1/1000 (1 µg/ml). Detection: DAB.



Western blot - Anti-RPA70 antibody (ab12320)

Detection of Human RPA70 by Western Blot. Samples: Whole cell lysate (10, 50 and 100 mcg/lane in lanes 1, 2 and 3, respectively) from HeLa cells. Antibody: ab12320 used at the indicated concentrations. Detection: Chemiluminescence with a 10 second exposure.

Detection of Human RPA70 by Western Blot.

Samples: Whole cell lysate (10, 50 and 100 mcg/lane in lanes 1, 2 and 3, respectively) from HeLa cells.

Antibody: ab12320 used at the indicated concentrations.

Detection: Chemiluminescence with a 10 second exposure.

Please note: All products are "FOR RESEARCH USE ONLY. NOT FOR USE IN DIAGNOSTIC PROCEDURES"

Our Abpromise to you: Quality guaranteed and expert technical support

- Replacement or refund for products not performing as stated on the datasheet
- Valid for 12 months from date of delivery
- Response to your inquiry within 24 hours
- We provide support in Chinese, English, French, German, Japanese and Spanish
- Extensive multi-media technical resources to help you
- We investigate all quality concerns to ensure our products perform to the highest standards

If the product does not perform as described on this datasheet, we will offer a refund or replacement. For full details of the Abpromise, please visit <https://www.abcam.co.jp/abpromise> or contact our technical team.

Terms and conditions

- Guarantee only valid for products bought direct from Abcam or one of our authorized distributors