


### Anti-ROX antibody [EPR11721] ab173573

リコンビナント **RabMAb**

#### 1 References [画像数 3](#)

#### 製品の概要

製品名	Anti-ROX antibody [EPR11721]
製品の詳細	Rabbit monoclonal [EPR11721] to ROX
由来種	Rabbit
アプリケーション	<b>適用あり:</b> WB, ICC/IF <b>適用なし:</b> Flow Cyt, IHC-P or IP
種交差性	<b>交差種:</b> Human <b>交差が予測される動物種:</b> Mouse, Cow, Orangutan 
免疫原	Synthetic peptide. This information is proprietary to Abcam and/or its suppliers.
ポジティブ・コントロール	A431, Raji, Jurkat and HeLa whole cell lysate ( <a href="#">ab150035</a> ). A431 cells.
特記事項	<p>This product is a recombinant monoclonal antibody, which offers several advantages including:</p> <ul style="list-style-type: none"> <li>- High batch-to-batch consistency and reproducibility</li> <li>- Improved sensitivity and specificity</li> <li>- Long-term security of supply</li> <li>- Animal-free production</li> </ul> <p>For more information <a href="#">see here</a>.</p> <p>Our RabMAb<sup>®</sup> technology is a patented hybridoma-based technology for making rabbit monoclonal antibodies. For details on our patents, please refer to <a href="#">RabMAb<sup>®</sup> patents</a>.</p> <p>Rat: We have preliminary internal testing data to indicate this antibody may not react with this species. Please contact us for more information.</p>

#### 製品の特性

製品の状態	Liquid
保存方法	Shipped at 4°C. Store at +4°C short term (1-2 weeks). Upon delivery aliquot. Store at -20°C long term. Avoid freeze / thaw cycle.
バッファー	pH: 7.20 Preservative: 0.01% Sodium azide Constituents: 9% PBS, 40% Glycerol (glycerin, glycerine), 0.05% BSA, 50% Tissue culture supernatant

精製度	Tissue culture supernatant
ポリ/モノ	モノクローナル
クローン名	EPR11721
アイソタイプ	IgG

アプリケーション

The Abpromise guarantee      Abpromise保証は、次のテスト済みアプリケーションにおけるab173573の使用に適用されます  
アプリケーションノートには、推奨の開始希釈率がありますが、適切な希釈率につきましてはご検討ください。

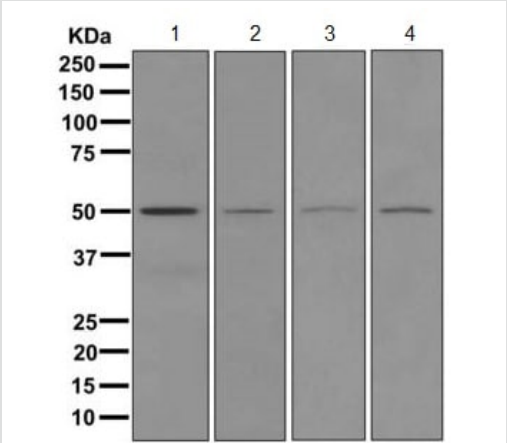
アプリケーション	Abreviews	特記事項
WB		1/1000 - 1/10000. Predicted molecular weight: 53 kDa.
ICC/IF		1/100 - 1/250.

追加情報      Is unsuitable for Flow Cyt, IHC-P or IP.

ターゲット情報

機能	Involved in cellular proliferation. May play an important role in cell growth and survival. May be involved in ribosome biogenesis, most likely during the assembly process of pre-ribosomal particles.
組織特異性	Expressed in liver, skeletal muscle, heart, pancreas, and placenta. Not detected in brain, lung or kidney. Expressed in several lung cancer tissues, but is barely detected in the adjacent non-cancerous tissues. Also highly expressed in several esophageal squamous cell carcinoma (ESCC), and colon cancer tissues, and in various cancer cell lines.
配列類似性	Belongs to the MINA53/NO66 family. Contains 1 JmjC domain.
細胞内局在	Nucleus. Nucleus > nucleolus.

画像



Western blot - Anti-ROX antibody [EPR11721] (ab173573)

**All lanes :** Anti-ROX antibody [EPR11721] (ab173573) at 1/1000 dilution

**Lane 1 :** A431 cell lysates

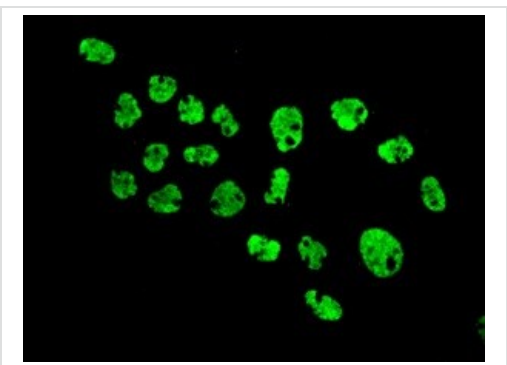
**Lane 2 :** Raji cell lysates

**Lane 3 :** Jurkat cell lysates

**Lane 4 :** HeLa cell lysates

Lysates/proteins at 10 µg per lane.

**Predicted band size:** 53 kDa



Immunofluorescence analysis of A431 cells labeling ROX with ab173573 at a 1/100 dilution.

Immunocytochemistry/ Immunofluorescence - Anti-ROX antibody [EPR11721] (ab173573)

Why choose a recombinant antibody?

**Research with confidence**  
Consistent and reproducible results

**Long-term and scalable supply**  
Recombinant technology

**Success from the first experiment**  
Confirmed specificity

**Ethical standards compliant**  
Animal-free production

Anti-ROX antibody [EPR11721] (ab173573)

**Please note:** All products are "FOR RESEARCH USE ONLY. NOT FOR USE IN DIAGNOSTIC PROCEDURES"

### **Our Abpromise to you: Quality guaranteed and expert technical support**

---

- Replacement or refund for products not performing as stated on the datasheet
- Valid for 12 months from date of delivery
- Response to your inquiry within 24 hours
  
- We provide support in Chinese, English, French, German, Japanese and Spanish
- Extensive multi-media technical resources to help you
- We investigate all quality concerns to ensure our products perform to the highest standards

If the product does not perform as described on this datasheet, we will offer a refund or replacement. For full details of the Abpromise, please visit <https://www.abcam.co.jp/abpromise> or contact our technical team.

### **Terms and conditions**

---

- Guarantee only valid for products bought direct from Abcam or one of our authorized distributors