

Anti-ROS1 (phospho Y2114) antibody ab191522

2 References [画像数 1](#)

製品の概要

製品名	Anti-ROS1 (phospho Y2114) antibody
製品の詳細	Rabbit polyclonal to ROS1 (phospho Y2114)
由来種	Rabbit
アプリケーション	適用あり: WB
種交差性	交差種: Mouse, Rat, Human
免疫原	Synthetic peptide within Human ROS1 (phospho Y2114). The exact sequence is proprietary. Synthetic phosphopeptide derived from human ROS1 around the phosphorylation site of Tyrosine 2114. Database link: P08922
ポジティブ・コントロール	SKOV3, Raw264.7 and PC12 whole cell lysates
特記事項	<p>The Life Science industry has been in the grips of a reproducibility crisis for a number of years. Abcam is leading the way in addressing this with our range of recombinant monoclonal antibodies and knockout edited cell lines for gold-standard validation. Please check that this product meets your needs before purchasing.</p> <p>If you have any questions, special requirements or concerns, please send us an inquiry and/or contact our Support team ahead of purchase. Recommended alternatives for this product can be found below, along with publications, customer reviews and Q&As</p>

製品の特性

製品の状態	Liquid
保存方法	Shipped at 4°C. Store at +4°C short term (1-2 weeks). Upon delivery aliquot. Store at -20°C long term. Avoid freeze / thaw cycle.
バッファー	pH: 7.20 Preservative: 0.05% Sodium azide Constituent: 99% PBS
精製度	Immunogen affinity purified
特記事項 (精製)	ab191522 affinity purified from Rabbit antiserum by affinity chromatography using epitope-specific immunogen. Purity is > 95% (by SDS-PAGE).
ポリモノ	ポリクローナル
アイソタイプ	IgG

アプリケーション

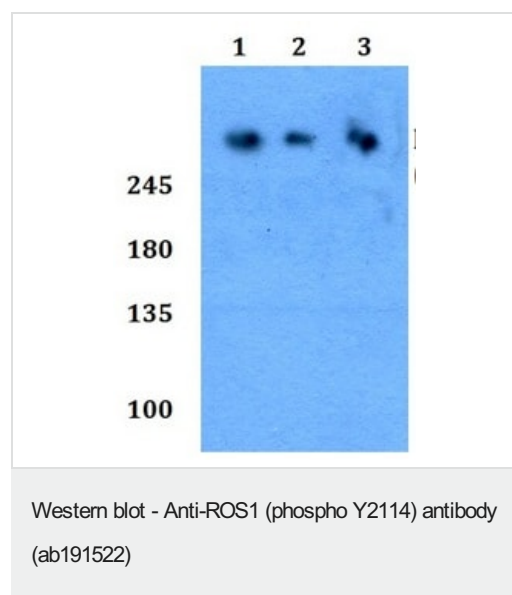
The Abpromise guarantee **Abpromise保証は、次のテスト済みアプリケーションにおけるab191522の使用に適用されます**
アプリケーションノートには、推奨の開始希釈率がありますが、適切な希釈率につきましてはご検討ください。

アプリケーション	Abreviews	特記事項
WB		1/500. Predicted molecular weight: 264 kDa.

ターゲット情報

機能	This is probably a cell growth or differentiation factor receptor with a tyrosine-protein kinase activity.
組織特異性	Expressed in brain. Expression is increased in primary gliomas.
関連疾患	Note=A chromosomal aberration involving ROS1 is found in a glioblastoma multiforme sample. An intra-chromosomal deletion del(6)(q21q21) is responsible for the formation of GOPC-ROS1 chimeric protein which has a constitutive receptor tyrosine kinase activity.
配列類似性	Belongs to the protein kinase superfamily. Tyr protein kinase family. Insulin receptor subfamily. Contains 9 fibronectin type-III domains. Contains 1 protein kinase domain.
細胞内局在	Membrane.

画像



All lanes : Anti-ROS1 (phospho Y2114) antibody (ab191522)

Lane 1 : SKOVCAR whole cell lysate

Lane 2 : Raw264.7 whole cell lysate

Lane 3 : PC12 whole cell lysate

Predicted band size: 264 kDa

Please note: All products are "FOR RESEARCH USE ONLY. NOT FOR USE IN DIAGNOSTIC PROCEDURES"

Our Abpromise to you: Quality guaranteed and expert technical support

- Replacement or refund for products not performing as stated on the datasheet
- Valid for 12 months from date of delivery
- Response to your inquiry within 24 hours

- We provide support in Chinese, English, French, German, Japanese and Spanish
- Extensive multi-media technical resources to help you
- We investigate all quality concerns to ensure our products perform to the highest standards

If the product does not perform as described on this datasheet, we will offer a refund or replacement. For full details of the Abpromise, please visit <https://www.abcam.co.jp/abpromise> or contact our technical team.

Terms and conditions

- Guarantee only valid for products bought direct from Abcam or one of our authorized distributors