


### Anti-RNF20 antibody ab32629

★★★★★ [19 Abreviews](#) [17 References](#) [画像数 5](#)

#### 製品の概要

製品名	Anti-RNF20 antibody
製品の詳細	Rabbit polyclonal to RNF20
由来種	Rabbit
アプリケーション	<b>適用あり:</b> WB, ICC/IF
種交差性	<b>交差種:</b> Chicken, Human <b>交差が予測される動物種:</b> Mouse 
免疫原	Synthetic peptide corresponding to Human RNF20 aa 1-100 conjugated to keyhole limpet haemocyanin. (Peptide available as <a href="#">ab32628</a> )
特記事項	<p>The Life Science industry has been in the grips of a reproducibility crisis for a number of years. Abcam is leading the way in addressing this with our range of recombinant monoclonal antibodies and knockout edited cell lines for gold-standard validation. Please check that this product meets your needs before purchasing.</p> <p>If you have any questions, special requirements or concerns, please send us an inquiry and/or contact our Support team ahead of purchase. Recommended alternatives for this product can be found below, along with publications, customer reviews and Q&amp;As</p>

#### 製品の特性

製品の状態	Liquid
保存方法	Shipped at 4°C. Store at +4°C short term (1-2 weeks). Upon delivery aliquot. Store at -20°C or -80°C. Avoid freeze / thaw cycle.
バッファー	pH: 7.40 Preservative: 0.02% Sodium azide Constituent: PBS  Batches of this product that have a concentration < 1mg/ml may have BSA added as a stabilising agent. If you would like information about the formulation of a specific lot, please contact our scientific support team who will be happy to help.
精製度	Immunogen affinity purified
ポリ/モノ	ポリクローナル

## アプリケーション

**The Abpromise guarantee** Abpromise保証は、 次のテスト済みアプリケーションにおけるab32629の使用に適用されます  
アプリケーションノートには、推奨の開始希釈率がありますが、適切な希釈率につきましてはご検討ください。

アプリケーション	Abreviews	特記事項
WB	★★★★★ (8)	Use a concentration of 1 µg/ml. Detects a band of approximately 120 kDa (predicted molecular weight: 114 kDa).
ICC/IF	★★★★★ (6)	Use a concentration of 1 µg/ml.

## ターゲット情報

機能	Component of the RNF20/40 E3 ubiquitin-protein ligase complex that mediates monoubiquitination of 'Lys-120' of histone H2B (H2BK120ub1). H2BK120ub1 gives a specific tag for epigenetic transcriptional activation and is also prerequisite for histone H3 'Lys-4' and 'Lys-79' methylation (H3K4me and H3K79me, respectively). It thereby plays a central role in histone code and gene regulation. The RNF20/40 complex forms a H2B ubiquitin ligase complex in cooperation with the E2 enzyme UBE2A or UBE2B; reports about the cooperation with UBE2E1/UBCH are contradictory. Required for transcriptional activation of Hox genes. Recruited to the MDM2 promoter, probably by being recruited by p53/TP53, and thereby acts as a transcriptional coactivator. Mediates the polyubiquitination of isoform 2 of PA2G4 in cancer cells leading to its proteasome-mediated degradation.
組織特異性	Expressed in the normal brain and also in malignant gliomas (at protein level).
パスウェイ	Protein modification; protein ubiquitination.
配列類似性	Belongs to the BRE1 family. Contains 1 RING-type zinc finger.
細胞内局在	Nucleus.

## 画像



Western blot - Anti-RNF20 antibody (ab32629)

**All lanes :** Anti-RNF20 antibody (ab32629) at 1 µg/ml

**Lane 1 :** HeLa (Human epithelial carcinoma cell line) Whole Cell Lysate

**Lane 2 :** Jurkat whole cell lysate ([ab7899](#))

**Lane 3 :** A-431 whole cell lysate ([ab7909](#))

**Lane 4 :** HEK-293 whole cell lysate ([ab7902](#))

**Lane 5 :** MCF-7 (Human breast adenocarcinoma cell line) Whole Cell Lysate

**Lane 6 :** U2OS (Human osteosarcoma cell line) Whole Cell Lysate

Lysates/proteins at 10 µg per lane.

### Secondary

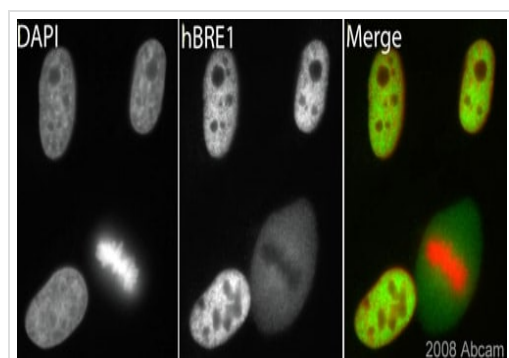
**Lane 1 :** IRDye 680 Conjugated Goat Anti-Rabbit IgG (H+L) at 1/15000 dilution

**Lanes 2-6 :** IRDye 680 Conjugated Goat Anti-Rabbit IgG (H+L) at 1/15000 dilution

Performed under reducing conditions.

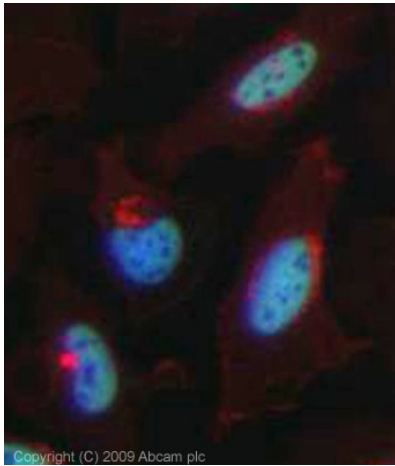
**Predicted band size:** 114 kDa

**Observed band size:** 120 kDa



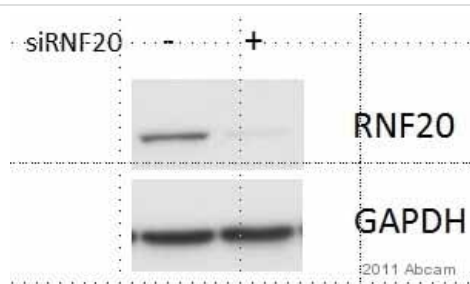
Immunocytochemistry/ Immunofluorescence - Anti-RNF20 antibody (ab32629)

This image is courtesy of an Abreview submitted by Dr Kirk McManus



Immunocytochemistry/ Immunofluorescence - Anti-RNF20 antibody (ab32629)

ICC/IF image of ab32629 stained HeLa cells. The cells were 4% PFA fixed (10 min) and then incubated in 1%BSA / 10% normal goat serum / 0.3M glycine in 0.1% PBS-Tween for 1h to permeabilise the cells and block non-specific protein-protein interactions. The cells were then incubated with the antibody (ab32629, 1µg/ml) overnight at +4°C. The secondary antibody (green) was Alexa Fluor® 488 goat anti-rabbit IgG (H+L) used at a 1/1000 dilution for 1h. Alexa Fluor® 594 WGA was used to label plasma membranes (red) at a 1/200 dilution for 1h. DAPI was used to stain the cell nuclei (blue) at a concentration of 1.43µM. This antibody also gave a positive result in 4% PFA fixed (10 min) Hek293, HepG2 and MCF7 cells at 1µg/ml, and in 100% methanol fixed (5 min) HeLa, Hek293, HepG2 and MCF7 cells at 1µg/ml.



Western blot - Anti-RNF20 antibody (ab32629)  
Image courtesy of an anonymous Abreview.

**All lanes :** Anti-RNF20 antibody (ab32629) at 1/1000 dilution

**Lane 1 :** Whole cell lysate prepared from Ntera2 cells

**Lane 2 :** Whole cell lysate prepared from Ntera2 cells + siRNA against RNF20 for 48 hours

Lysates/proteins at 20 µg per lane.

### Secondary

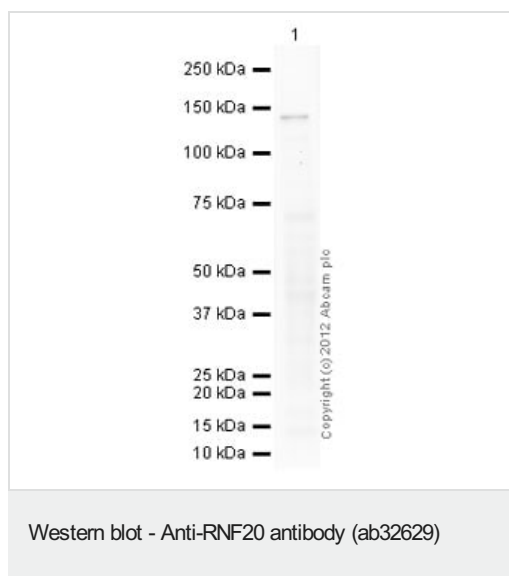
**All lanes :** HRP conjugated goat polyclonal at 1/10000 dilution

Developed using the ECL technique.

**Predicted band size:** 114 kDa

**Observed band size:** 120 kDa

**Exposure time:** 20 seconds



Anti-RNF20 antibody (ab32629) at 1 µg/ml + Liver (Chicken) Tissue  
Lysate at 10 µg

### Secondary

Goat Anti-Rabbit IgG H&L (HRP) preadsorbed (**ab97080**) at  
1/5000 dilution

Developed using the ECL technique.

Performed under reducing conditions.

**Predicted band size:** 114 kDa

**Observed band size:** 140 kDa

**Exposure time:** 20 minutes

**Please note:** All products are "FOR RESEARCH USE ONLY. NOT FOR USE IN DIAGNOSTIC PROCEDURES"

### Our Abpromise to you: Quality guaranteed and expert technical support

- Replacement or refund for products not performing as stated on the datasheet
- Valid for 12 months from date of delivery
- Response to your inquiry within 24 hours
- We provide support in Chinese, English, French, German, Japanese and Spanish
- Extensive multi-media technical resources to help you
- We investigate all quality concerns to ensure our products perform to the highest standards

If the product does not perform as described on this datasheet, we will offer a refund or replacement. For full details of the Abpromise, please visit <https://www.abcam.co.jp/abpromise> or contact our technical team.

### Terms and conditions

- Guarantee only valid for products bought direct from Abcam or one of our authorized distributors