

# Anti-RNA polymerase beta antibody [EPR18704] ab191598

リコンビナント **RabMAb**

★★★★★ **2 Abreviews** **7 References** 画像数 3

### 製品の概要

|              |   |
|--------------|---|
| 製品名          | Anti-RNA polymerase beta antibody [EPR18704]  |
| 製品の詳細        | Rabbit monoclonal [EPR18704] to RNA polymerase beta   |
| 由来種          | Rabbit  |
| アプリケーション     | <b>適用あり:</b> IP, WB   |
| 種交差性         | <b>交差種:</b> Escherichia coli  |
| 免疫原          | Synthetic peptide. This information is proprietary to Abcam and/or its suppliers.   |
| ポジティブ・コントロール | WB & IP: E.coli whole cell lysates.   |
| 特記事項         | <p>This product is a recombinant monoclonal antibody, which offers several advantages including:</p> <ul style="list-style-type: none"> <li>- High batch-to-batch consistency and reproducibility</li> <li>- Improved sensitivity and specificity</li> <li>- Long-term security of supply</li> <li>- Animal-free production</li> </ul> <p>For more information <a href="#">see here</a>.</p> <p>Our RabMAb<sup>®</sup> technology is a patented hybridoma-based technology for making rabbit monoclonal antibodies. For details on our patents, please refer to <a href="#">RabMAb<sup>®</sup> patents</a>.</p> |

### 製品の特性

|        |  |
|--------|--|
| 製品の状態  | Liquid   |
| 保存方法   | Shipped at 4°C. Store at +4°C short term (1-2 weeks). Upon delivery aliquot. Store at -20°C long term. Avoid freeze / thaw cycle.  |
| バッファー  | <p>pH: 7.2</p> <p>Preservative: 0.01% Sodium azide</p> <p>Constituents: 59% PBS, 40% Glycerol (glycerin, glycerine), 0.05% BSA</p> |
| 精製度    | Protein A purified   |
| ポリ/モノ  | モノクローナル  |
| クローン名  | EPR18704   |
| アイソタイプ | IgG  |

## アプリケーション

**The Abpromise guarantee**      Abpromise保証は、 次のテスト済みアプリケーションにおけるab191598の使用に適用されます  
アプリケーションノートには、推奨の開始希釈率がありますが、適切な希釈率につきましてはご検討ください。

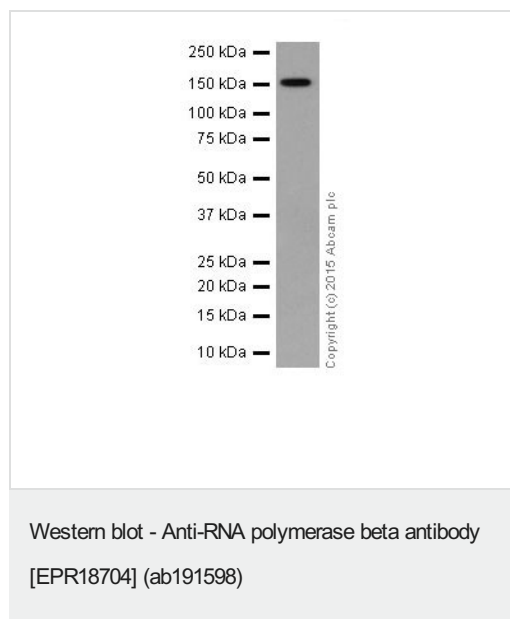
| アプリケーション | Abreviews | 特記事項   |
|----------|-----------|--|
| IP       |           | 1/30.  |
| WB       | ★★★★★ (2) | 1/2000. Detects a band of approximately 150 kDa (predicted molecular weight: 150 kDa). |

## ターゲット情報

**関連性**      RNA polymerase beta (rpoB) is the  $\beta$  subunit of the bacterial RNA polymerase and is the subunit which possesses the polymerase activity. This protein is a highly conserved enzyme contained by many bacteria and has been reported as a useful marker for studies in bacterial identification and ecology.

**細胞内局在**      Cell Membrane and Cytoplasmic

## 画像



Anti-RNA polymerase beta antibody [EPR18704] (ab191598) at  
1/2000 dilution + E.coli whole cell lysates at 10  $\mu$ g

### Secondary

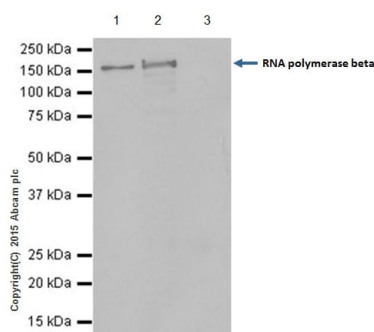
Goat Anti-Rabbit IgG H&L (HRP) ([ab97051](#)) at 1/50000 dilution

**Predicted band size:** 150 kDa

**Observed band size:** 150 kDa

**Exposure time:** 30 seconds

Blocking/Dilution buffer: 5% NFDM/TBST.



Immunoprecipitation - Anti-RNA polymerase beta antibody [EPR18704] (ab191598)

RNA polymerase beta was immunoprecipitated from 1mg of E.coli whole cell lysates with ab191598 at 1/30 dilution. Western blot was performed from the immunoprecipitate using ab191598 at 1/1000 dilution. Anti-Rabbit IgG (HRP), specific to the non-reduced form of IgG, was used as secondary antibody at 1/1500.

Lane 1: E.coli whole cell lysates 10ug (Input). Lane 2: ab191598 IP in E.coli whole cell lysates. Lane 3: Rabbit monoclonal IgG (**ab172730**) instead of ab191598 in E.coli whole cell lysates.

Blocking and dilution buffer and concentration: 5% NFDM/TBST.

Exposure time: 5 seconds.

#### Why choose a recombinant antibody?



**Research with confidence**  
Consistent and reproducible results



**Long-term and scalable supply**  
Recombinant technology



**Success from the first experiment**  
Confirmed specificity



**Ethical standards compliant**  
Animal-free production

Anti-RNA polymerase beta antibody [EPR18704] (ab191598)

**Please note:** All products are "FOR RESEARCH USE ONLY. NOT FOR USE IN DIAGNOSTIC PROCEDURES"

#### Our Abpromise to you: Quality guaranteed and expert technical support

- Replacement or refund for products not performing as stated on the datasheet
- Valid for 12 months from date of delivery

- Response to your inquiry within 24 hours
- We provide support in Chinese, English, French, German, Japanese and Spanish
- Extensive multi-media technical resources to help you
- We investigate all quality concerns to ensure our products perform to the highest standards

If the product does not perform as described on this datasheet, we will offer a refund or replacement. For full details of the Abpromise, please visit <https://www.abcam.co.jp/abpromise> or contact our technical team.

#### **Terms and conditions**

---

- Guarantee only valid for products bought direct from Abcam or one of our authorized distributors