

Anti-RIP3 (phospho S232) antibody [EPR9516(N)-25] ab195117

リコンビナント **RabMAb**

★★★★☆ **13 Abreviews** **58 References** 画像数 5

製品の概要

製品名	Anti-RIP3 (phospho S232) antibody [EPR9516(N)-25]
製品の詳細	Rabbit monoclonal [EPR9516(N)-25] to RIP3 (phospho S232)
由来種	Rabbit
アプリケーション	適用あり: ELISA, WB, Dot blot 適用なし: IHC-P or IP
種交差性	交差種: Mouse
免疫原	Synthetic peptide. This information is proprietary to Abcam and/or its suppliers.
ポジティブ・コントロール	WB: L-929 whole cell lysate treated with 20 ng/ml TNF alpha, 100 nM Smac mimetic, and 20 µM z-VAD for 8 h and then harvested; Untreated L-929 whole cell lysate; TSE (WT) whole cell lysate treated with 20 ng/ml TNF alpha, 100 nM Smac mimetic, and 20 µM z-VAD for 12 h and then harvested; TSE (KO MLKL) whole cell lysate treated with 20 ng/ml TNF alpha, 100 nM Smac mimetic, and 20 µM z-VAD for 12 h and then harvested.
特記事項	<p>This product is a recombinant monoclonal antibody, which offers several advantages including:</p> <ul style="list-style-type: none"> - High batch-to-batch consistency and reproducibility - Improved sensitivity and specificity - Long-term security of supply - Animal-free production <p>For more information see here.</p> <p>Our RabMAb[®] technology is a patented hybridoma-based technology for making rabbit monoclonal antibodies. For details on our patents, please refer to RabMAb[®] patents.</p>

製品の特性

製品の状態	Liquid
保存方法	Shipped at 4°C. Store at +4°C short term (1-2 weeks). Upon delivery aliquot. Store at -20°C long term. Avoid freeze / thaw cycle.
バッファー	pH: 7.2 Preservative: 0.01% Sodium azide Constituents: 59% PBS, 40% Glycerol, 0.05% BSA
精製度	Protein A purified

ポリ/モノ	モノクローナル
クローン名	EPR9516(N)-25
アイソタイプ	IgG

アプリケーション

The Abpromise guarantee **Abpromise保証は、**次のテスト済みアプリケーションにおけるab195117の使用に適用されます
アプリケーションノートには、推奨の開始希釈率がありますが、適切な希釈率につきましてはご検討ください。

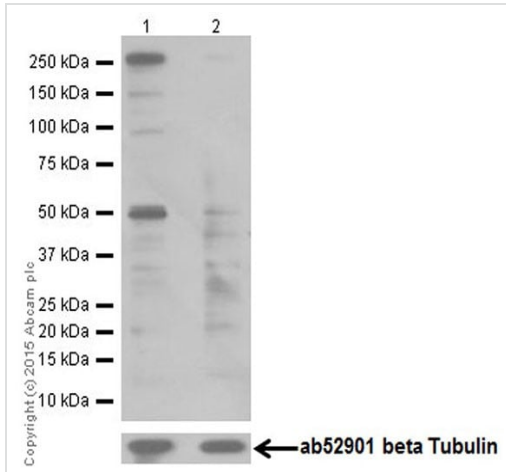
アプリケーション	Abreviews	特記事項
ELISA	★★★★★ (1)	Use at an assay dependent concentration.
WB	★★★★★ (8)	1/1000. Detects a band of approximately 53 kDa (predicted molecular weight: 53 kDa).
Dot blot		Use at an assay dependent concentration.

追加情報 Is unsuitable for IHC-P or IP.

ターゲット情報

機能	Promotes apoptosis.
組織特異性	Detected at lower levels in heart, placenta, lung and kidney. Isoform 3 is significantly increased in colon and lung cancers.
配列類似性	Belongs to the protein kinase superfamily. TKL Ser/Thr protein kinase family. Contains 1 protein kinase domain.
翻訳後修飾	Autophosphorylated.
細胞内局在	Cytoplasm.

画像



Western blot - Anti-RIP3 (phospho S232) antibody [EPR9516(N)-25] (ab195117)

All lanes : Anti-RIP3 (phospho S232) antibody [EPR9516(N)-25] (ab195117) at 1/10000 dilution

Lane 1 : Untreated L-929 (Mouse connective tissue fibroblast cell line) whole cell lysate

Lane 2 : L-929 (Mouse connective tissue fibroblast cell line) whole cell lysate treated with phosphatase

Lysates/proteins at 10 µg per lane.

Secondary

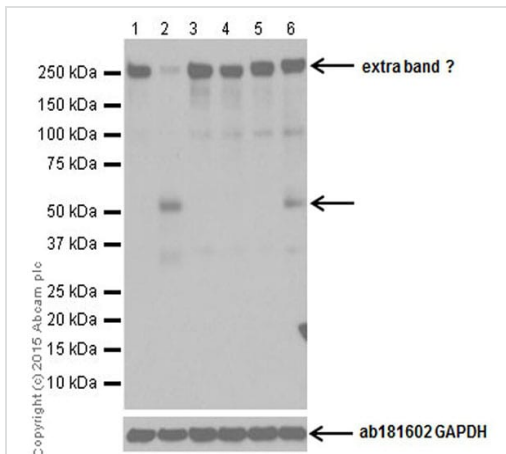
All lanes : Goat Anti-Rabbit IgG H&L (HRP) ([ab97051](#)) at 1/100000 dilution

Predicted band size: 53 kDa

Observed band size: 53 kDa

Exposure time: 3 minutes

Blocking/Dilution buffer: 5% NFDm/TBST.



Western blot - Anti-RIP3 (phospho S232) antibody [EPR9516(N)-25] (ab195117)

All lanes : Anti-RIP3 (phospho S232) antibody [EPR9516(N)-25] (ab195117) at 1/2000 dilution

Lane 1 : Untreated TSE (WT) whole cell lysate

Lane 2 : TSE (WT) whole cell lysate treated with 20 ng/ml TNF alpha, 100 nM Smac mimetic, and 20 µM z-VAD for 12 h and then harvested

Lane 3 : Untreated TSE (KO RIP3) whole cell lysate

Lane 4 : TSE (KO RIP3) whole cell lysate treated with 20 ng/ml TNF alpha, 100 nM Smac mimetic, and 20 µM z-VAD for 12 h and then harvested

Lane 5 : Untreated TSE (KO MLKL) whole cell lysate

Lane 6 : TSE (KO MLKL) whole cell lysate treated with 20 ng/ml TNF alpha, 100 nM Smac mimetic, and 20 µM z-VAD for 12 h and then harvested

Lysates/proteins at 10 µg per lane.

Secondary

All lanes : Goat Anti-Rabbit IgG H&L (HRP) ([ab97051](#)) at 1/1000 dilution

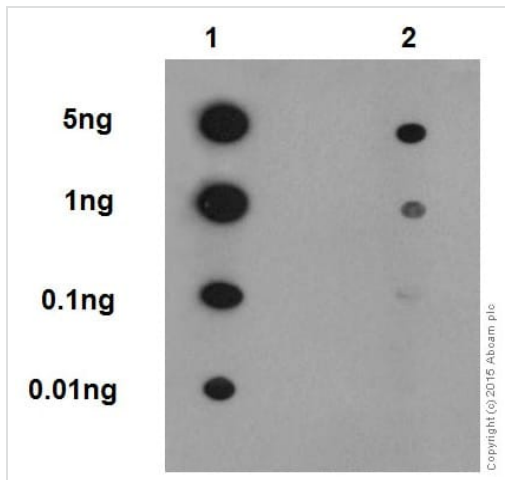
Predicted band size: 53 kDa

Observed band size: 53 kDa

Exposure time: 30 seconds

Blocking/Dilution buffer: 5% NFDM/TBST.

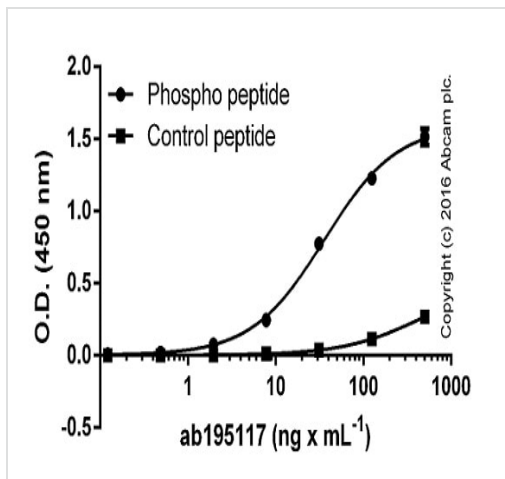
Lysates were provided by Xiaodong Wang, National Institute of Biological Sciences, Beijing



Dot Blot - Anti-RIP3 (phospho S232) antibody
[EPR9516(N)-25] (ab195117)

Primary antibody: ab195117 at 1:1000 dilution (1.6µg/ml), secondary antibody: Goat Anti-Rabbit IgG, (H+L), Peroxidase conjugated (**ab97051**) at 1:1000 dilution, Blocking and dilution buffer: 5% NFDM/TBST, Lane 1: RIP3 (phospho S232) phospho peptide, Lane 2: RIP3 Non-phospho peptide, Exposure time: 3 minutes.

We observed weak binding to the non-phospho peptide at very high concentrations.



ELISA - Anti-RIP3 (phospho S232) antibody
[EPR9516(N)-25] (ab195117)

Serially diluted ab195117 was bound to immobilized phospho or non-phospho (control) peptide demonstrating minimal cross-reactivity to the non-phosphorylated residue. Antigen - RIP3 (phospho S232) phospho peptide; RIP3 non-phospho peptide at 250 ng/ml. Primary antibody concentration range: 0 - 500 ng/ml. Secondary antibody - Alkaline Phosphatase-conjugated AffiniPure Goat Anti-Rabbit IgG(H+L) at 1:2500.

Why choose a recombinant antibody?



Research with confidence
Consistent and reproducible results



Long-term and scalable supply
Recombinant technology



Success from the first experiment
Confirmed specificity



Ethical standards compliant
Animal-free production

Anti-RIP3 (phospho S232) antibody [EPR9516(N)-25] (ab195117)

Please note: All products are "FOR RESEARCH USE ONLY. NOT FOR USE IN DIAGNOSTIC PROCEDURES"

Our Abpromise to you: Quality guaranteed and expert technical support

- Replacement or refund for products not performing as stated on the datasheet
- Valid for 12 months from date of delivery
- Response to your inquiry within 24 hours
- We provide support in Chinese, English, French, German, Japanese and Spanish
- Extensive multi-media technical resources to help you
- We investigate all quality concerns to ensure our products perform to the highest standards

If the product does not perform as described on this datasheet, we will offer a refund or replacement. For full details of the Abpromise, please visit <https://www.abcam.co.jp/abpromise> or contact our technical team.

Terms and conditions

- Guarantee only valid for products bought direct from Abcam or one of our authorized distributors