

Anti-RIP3 (phospho S227) antibody [EPR9627] ab209384

リコンビナント **RabMAb**

65 References 画像数 **4**

製品の概要

製品名	Anti-RIP3 (phospho S227) antibody [EPR9627]
製品の詳細	Rabbit monoclonal [EPR9627] to RIP3 (phospho S227)
由来種	Rabbit
アプリケーション	適用あり: ELISA, Dot blot, WB
種交差性	交差種: Human
免疫原	Synthetic peptide. This information is proprietary to Abcam and/or its suppliers.
ポジティブ・コントロール	WB: HT-29 treated with 20 ng/ml TNF alpha, 100 nM Smac mimetic, and 20 µM z-VAD for 8 h and then harvested whole cell lysate.
特記事項	<p>This product is a recombinant monoclonal antibody, which offers several advantages including:</p> <ul style="list-style-type: none"> - High batch-to-batch consistency and reproducibility - Improved sensitivity and specificity - Long-term security of supply - Animal-free production <p>For more information see here.</p> <p>Our RabMAb[®] technology is a patented hybridoma-based technology for making rabbit monoclonal antibodies. For details on our patents, please refer to RabMAb[®] patents.</p>

製品の特性

製品の状態	Liquid
保存方法	Shipped at 4°C. Store at +4°C short term (1-2 weeks). Upon delivery aliquot. Store at -20°C long term. Avoid freeze / thaw cycle.
バッファー	<p>pH: 7.2</p> <p>Preservative: 0.01% Sodium azide</p> <p>Constituents: 59% PBS, 40% Glycerol, 0.05% BSA</p>
精製度	Protein A purified
ポリ/モノ	モノクローナル
クローン名	EPR9627
アイソタイプ	IgG

アプリケーション

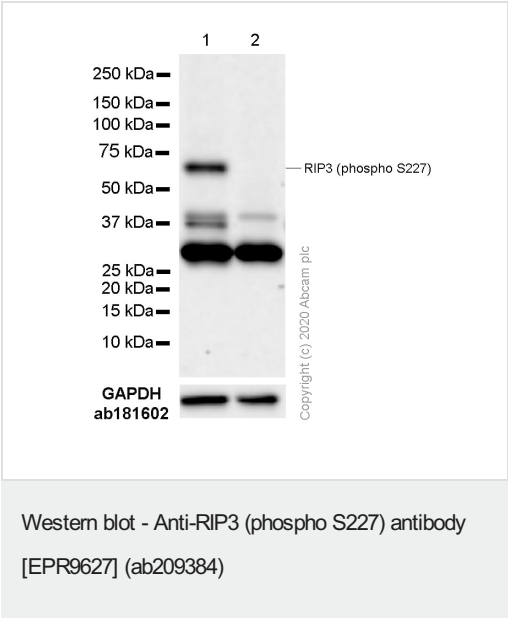
The Abpromise guarantee Abpromise保証は、 次のテスト済みアプリケーションにおけるab209384の使用に適用されます
アプリケーションノートには、推奨の開始希釈率がありますが、適切な希釈率につきましてはご検討ください。

アプリケーション	Abreviews	特記事項
ELISA		Use at an assay dependent concentration.
Dot blot		1/1000.
WB		1/2000. Detects a band of approximately 70 kDa (predicted molecular weight: 57 kDa).

ターゲット情報

機能	Promotes apoptosis.
組織特異性	Detected at lower levels in heart, placenta, lung and kidney. Isoform 3 is significantly increased in colon and lung cancers.
配列類似性	Belongs to the protein kinase superfamily. TKL Ser/Thr protein kinase family. Contains 1 protein kinase domain.
翻訳後修飾	Autophosphorylated.
細胞内局在	Cytoplasm.

画像



All lanes : Anti-RIP3 (phospho S227) antibody [EPR9627] (ab209384) at 1/1000 dilution

Lane 1 : HT-29 (Human colorectal adenocarcinoma epithelial cell) treated with 20 ng/ml TNF alpha, 100 nM Smac mimetic and 20µM VAD-FMK for 6 h cell lysate

Lane 2 : HT-29 (Human colorectal adenocarcinoma epithelial cell) cell lysate

Lysates/proteins at 10 µg per lane.

Secondary

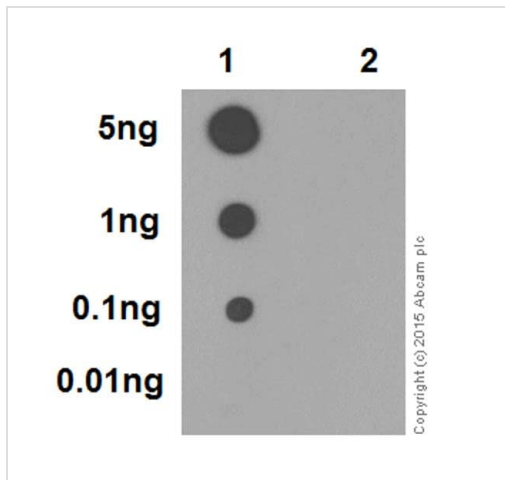
All lanes : Goat Anti-Rabbit IgG H&L (HRP) (**ab97051**) at 1/20000 dilution

Predicted band size: 57 kDa

Observed band size: 70 kDa

Exposure time: 100 seconds

Blocking/Diluting buffer and concentration 5% NFDM/TBST

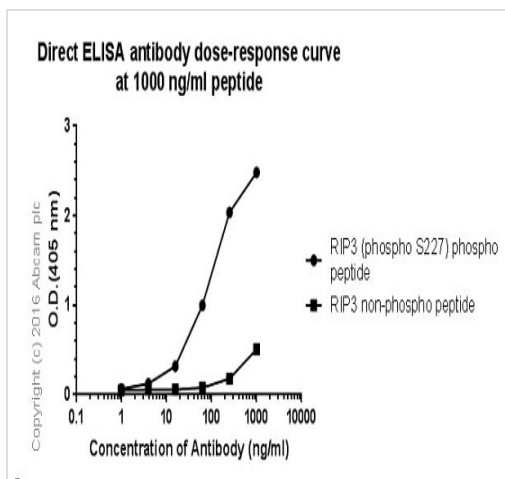


Dot blot analysis of RIP3 (phospho S227) phospho peptide (Lane 1) and RIP3 non-phospho peptide (Lane 2) labeled using ab209384 at 1/1000 dilution, followed by Goat Anti-Rabbit IgG, (H+L), Peroxidase conjugated ([ab97051](#)) at 1/100,000 dilution.

Blocking and diluting buffer: 5% NFDM/TBST.

Exposure time: 10 seconds.

Dot Blot - Anti-RIP3 (phospho S227) antibody
[EPR9627] (ab209384)



Direct ELISA antibody dose-response curve using ab209384.

Antigen concentration of 1000 ng/mL and primary antibody concentration of 0-1000 ng/mL. A Alkaline Phosphatase-conjugated AffiniPure -conjugated goat anti-rabbit IgG (1/2500) was used as the secondary antibody.

ELISA - Anti-RIP3 (phospho S227) antibody
[EPR9627] (ab209384)

Why choose a recombinant antibody?



Research with confidence
Consistent and reproducible results



Long-term and scalable supply
Recombinant technology



Success from the first experiment
Confirmed specificity



Ethical standards compliant
Animal-free production

Anti-RIP3 (phospho S227) antibody [EPR9627]
(ab209384)

Please note: All products are "FOR RESEARCH USE ONLY. NOT FOR USE IN DIAGNOSTIC PROCEDURES"

Our Abpromise to you: Quality guaranteed and expert technical support

- Replacement or refund for products not performing as stated on the datasheet
- Valid for 12 months from date of delivery
- Response to your inquiry within 24 hours
- We provide support in Chinese, English, French, German, Japanese and Spanish
- Extensive multi-media technical resources to help you
- We investigate all quality concerns to ensure our products perform to the highest standards

If the product does not perform as described on this datasheet, we will offer a refund or replacement. For full details of the Abpromise, please visit <https://www.abcam.co.jp/abpromise> or contact our technical team.

Terms and conditions

- Guarantee only valid for products bought direct from Abcam or one of our authorized distributors