

### Anti-RIP140 antibody ab42126

★★★★★ [1 Abreviews](#) [35 References](#) [画像数 2](#)

#### 製品の概要

製品名	Anti-RIP140 antibody
製品の詳細	Rabbit polyclonal to RIP140
由来種	Rabbit
特異性	ab42126 recognises the C terminal domain of RIP140
アプリケーション	<b>適用あり:</b> IP, WB, IHC-Fr, IHC (PFA fixed), ChIP, IHC-P, ICC/IF
種交差性	<b>交差種:</b> Mouse, Rat, Human
免疫原	Synthetic peptide (Human) corresponding to the C terminal domain of RIP140. Peptide available as <a href="#">ab93493</a> .
特記事項	<p>The Life Science industry has been in the grips of a reproducibility crisis for a number of years. Abcam is leading the way in addressing this with our range of recombinant monoclonal antibodies and knockout edited cell lines for gold-standard validation. Please check that this product meets your needs before purchasing.</p> <p>If you have any questions, special requirements or concerns, please send us an inquiry and/or contact our Support team ahead of purchase. Recommended alternatives for this product can be found below, along with publications, customer reviews and Q&amp;As</p>

#### 製品の特性

製品の状態	Liquid
保存方法	Shipped at 4°C. Store at +4°C short term (1-2 weeks). Upon delivery aliquot. Store at -20°C or -80°C. Avoid freeze / thaw cycle.
バッファー	pH: 7.40 Constituents: 0.5% BSA, 30% Glycerol (glycerin, glycerine), 69.5% Tris HCl
精製度	Immunogen affinity purified
ポリ/モノ	ポリクローナル
アイソタイプ	IgG

#### アプリケーション

The Abpromise guarantee

Abpromise保証は、 次のテスト済みアプリケーションにおけるab42126の使用に適用されます

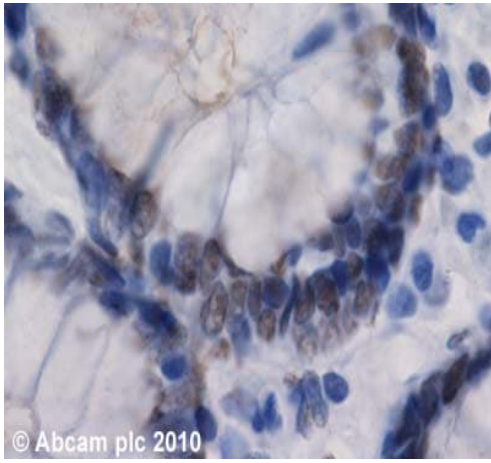
アプリケーションノートには、推奨の開始希釈率がありますが、適切な希釈率につきましてはご確認ください。

アプリケーション	Abreviews	特記事項
IP		Use at an assay dependent concentration.
WB		Use at an assay dependent concentration.
IHC-Fr		Use at an assay dependent concentration.
IHC (PFA fixed)		Use at an assay dependent concentration.
ChIP		Use at an assay dependent concentration. PubMed: 21360626
IHC-P	★★★★★ (1)	Use a concentration of 4 µg/ml.
ICC/IF		Use a concentration of 5 µg/ml.

## ターゲット情報

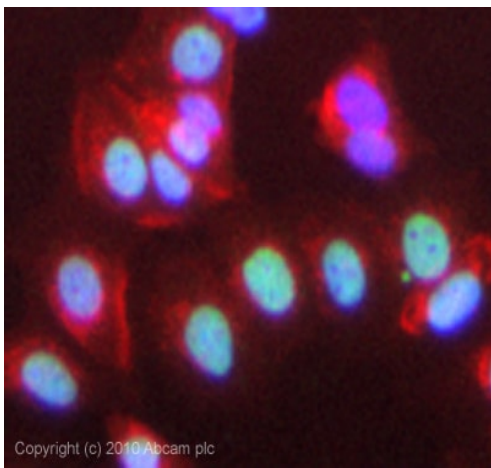
機能	Modulates transcriptional activation by steroid receptors such as NR3C1, NR3C2 and ESR1. Also modulates transcriptional repression by nuclear hormone receptors.
ドメイン	Contains 9 Leu-Xaa-Xaa-Leu-Leu (LXXLL) motifs, which have different affinities for nuclear receptors. The C-terminal LTKTNPILYMLQK motif is required for ligand-dependent interaction with RAAR and RXRB homodimers and heterodimers, for the corepressor activity, and for the formation of an HDAC3 complex with RARA/RXR (By similarity). Contains at least four autonomous repression domains (RD1-4). RD1 functions via a histone deacetylase (HDAC)-independent mechanism, whereas RD2, RD3 and RD4 can function by HDAC-dependent or independent mechanisms, depending on cell type. RD2 is dependent on CTBP binding.
翻訳後修飾	Acetylation regulates its nuclear translocation and corepressive activity (By similarity). Acetylation abolishes interaction with CTBP1. Phosphorylation enhances interaction with YWHAH.
細胞内局在	Nucleus. Localized to discrete foci and redistributes to larger nuclear domains upon binding to ligand-bound NR3C1.

## 画像



Immunohistochemistry (Formalin/PFA-fixed paraffin-embedded sections) - Anti-RIP140 antibody (ab42126)

ab42126 (4µg/ml) staining RIP140 in human colon using an automated system (DAKO Autostainer Plus). Using this protocol there is staining of the nuclei of the intestinal glands. Sections were rehydrated and antigen retrieved with the Dako 3 in 1 AR buffer EDTA pH 9.0 in a DAKO PT link. Slides were peroxidase blocked in 3% H<sub>2</sub>O<sub>2</sub> in methanol for 10 mins. They were then blocked with Dako Protein block for 10 minutes (containing casein 0.25% in PBS) then incubated with primary antibody for 20 min and detected with Dako envision flex amplification kit for 30 minutes. Colorimetric detection was completed with Diaminobenzidine for 5 minutes. Slides were counterstained with Haematoxylin and coverslipped under DePeX. Please note that, for manual staining, optimization of primary antibody concentration and incubation time is recommended. Signal amplification may be required.



Immunocytochemistry/ Immunofluorescence - Anti-RIP140 antibody (ab42126)

ICC/IF image of ab42126 stained MCF7 cells. The cells were 4% formaldehyde fixed (10 min) and then incubated in 1%BSA / 10% normal goat serum / 0.3M glycine in 0.1% PBS-Tween for 1h to permeabilise the cells and block non-specific protein-protein interactions. The cells were then incubated with the antibody (ab42126, 5µg/ml) overnight at +4°C. The secondary antibody (green) was Alexa Fluor® 488 goat anti-rabbit IgG (H+L) used at a 1/1000 dilution for 1h. Alexa Fluor® 594 WGA was used to label plasma membranes (red) at a 1/200 dilution for 1h. DAPI was used to stain the cell nuclei (blue) at a concentration of 1.43µM.

**Please note:** All products are "FOR RESEARCH USE ONLY. NOT FOR USE IN DIAGNOSTIC PROCEDURES"

### Our Abpromise to you: Quality guaranteed and expert technical support

- Replacement or refund for products not performing as stated on the datasheet
- Valid for 12 months from date of delivery
- Response to your inquiry within 24 hours
- We provide support in Chinese, English, French, German, Japanese and Spanish
- Extensive multi-media technical resources to help you
- We investigate all quality concerns to ensure our products perform to the highest standards

If the product does not perform as described on this datasheet, we will offer a refund or replacement. For full details of the Abpromise, please visit <https://www.abcam.co.jp/abpromise> or contact our technical team.

## Terms and conditions

---

- Guarantee only valid for products bought direct from Abcam or one of our authorized distributors