


### Anti-RGS22 antibody [EPR7005] ab131048

リコンビナント RabMAb<sup>®</sup>

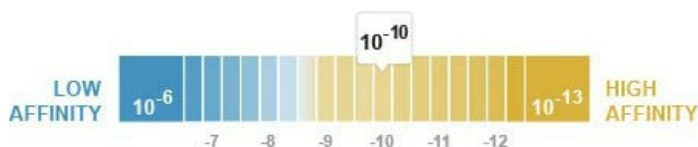
#### 1 References [画像数 3](#)

#### 製品の概要

製品名	Anti-RGS22 antibody [EPR7005]
製品の詳細	Rabbit monoclonal [EPR7005] to RGS22
由来種	Rabbit
アプリケーション	<b>適用あり:</b> WB <b>適用なし:</b> IHC-P or IP
種交差性	<b>交差種:</b> Rat <b>交差が予測される動物種:</b> Mouse, Human 
免疫原	Synthetic peptide within Human RGS22 aa 200-300. The exact sequence is proprietary.
ポジティブ・コントロール	Rat testis lysate
特記事項	<p>This antibody was developed as part of a collaboration with the lab of Damian Romero at the University of Mississippi Medical Center.</p> <p>This product is a recombinant monoclonal antibody, which offers several advantages including:</p> <ul style="list-style-type: none"><li>- High batch-to-batch consistency and reproducibility</li><li>- Improved sensitivity and specificity</li><li>- Long-term security of supply</li><li>- Animal-free production</li></ul> <p>For more information <a href="#">see here</a>.</p> <p>Our RabMAb<sup>®</sup> technology is a patented hybridoma-based technology for making rabbit monoclonal antibodies. For details on our patents, please refer to <a href="#">RabMAb<sup>®</sup> patents</a>.</p>

#### 製品の特性

製品の状態	Liquid
保存方法	Shipped at 4°C. Store at -20°C. Stable for 12 months at -20°C.
解離定数 (K <sub>D</sub> 値)	K <sub>D</sub> = 1.30 x 10 <sup>-10</sup> M



## [Learn more about K<sub>D</sub>](#)

バッファー	pH: 7.20 Preservative: 0.01% Sodium azide Constituents: 9% PBS, 40% Glycerol (glycerin, glycerine), 0.05% BSA, 50% Tissue culture supernatant
精製度	Protein A purified
ポリ/モノ	モノクローナル
クローン名	EPR7005
アイソタイプ	IgG

## アプリケーション

**The Abpromise guarantee**      **Abpromise保証は、次のテスト済みアプリケーションにおけるab131048の使用に適用されます**  
アプリケーションノートには、推奨の開始希釈率がありますが、適切な希釈率につきましてはご検討ください。

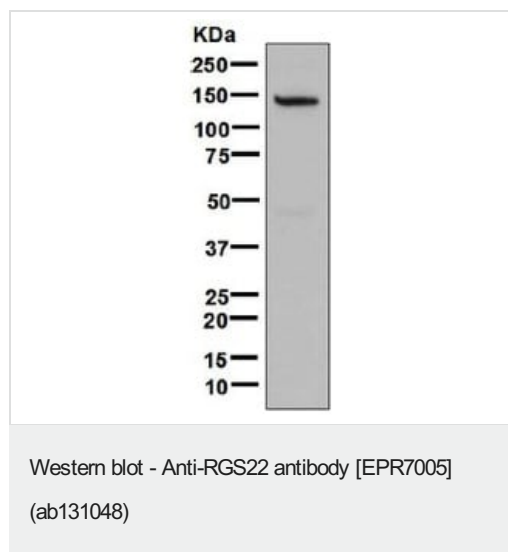
アプリケーション	Abreviews	特記事項
WB		1/1000 - 1/10000. Detects a band of approximately 150 kDa (predicted molecular weight: 147 kDa).

**追加情報**      Is unsuitable for IHC-P or IP.

## ターゲット情報

機能	Inhibits signal transduction by increasing the GTPase activity of G protein alpha subunits thereby driving them into their inactive GDP-bound form.
配列類似性	Contains 2 RGS domains.

## 画像



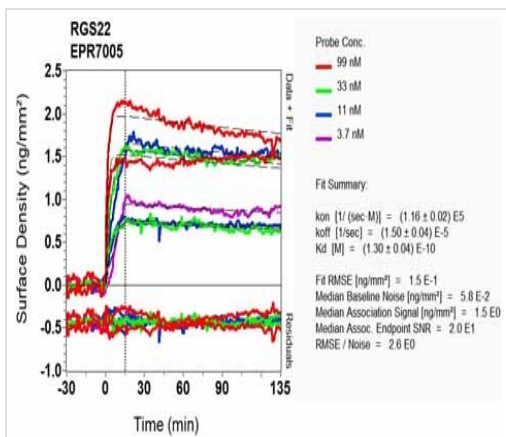
Anti-RGS22 antibody [EPR7005] (ab131048) at 1/1000 dilution +  
Rat testis lysate at 10 µg

### Secondary

HRP labelled goat anti-rabbit at 1/2000 dilution

**Predicted band size:** 147 kDa

**Observed band size:** 150 kDa



SPR Scanning - Anti-RGS22 antibody [EPR7005]  
(ab131048)

Equilibrium dissociation constant ( $K_D$ )

Learn more about  $K_D$

[Click here to learn more about  \$K\_D\$](#)

### Why choose a recombinant antibody?



**Research with confidence**  
Consistent and reproducible results



**Long-term and scalable supply**  
Recombinant technology



**Success from the first experiment**  
Confirmed specificity



**Ethical standards compliant**  
Animal-free production

Anti-RGS22 antibody [EPR7005] (ab131048)

**Please note:** All products are "FOR RESEARCH USE ONLY. NOT FOR USE IN DIAGNOSTIC PROCEDURES"

### Our Abpromise to you: Quality guaranteed and expert technical support

- Replacement or refund for products not performing as stated on the datasheet
- Valid for 12 months from date of delivery
- Response to your inquiry within 24 hours
- We provide support in Chinese, English, French, German, Japanese and Spanish
- Extensive multi-media technical resources to help you
- We investigate all quality concerns to ensure our products perform to the highest standards

If the product does not perform as described on this datasheet, we will offer a refund or replacement. For full details of the Abpromise, please visit <https://www.abcam.co.jp/abpromise> or contact our technical team.

### Terms and conditions

- Guarantee only valid for products bought direct from Abcam or one of our authorized distributors