


Anti-RFX1 antibody ab110927

画像数 1

製品の概要

製品名	Anti-RFX1 antibody
製品の詳細	Rabbit polyclonal to RFX1
由来種	Rabbit
アプリケーション	適用あり: IP
種交差性	交差種: Human 交差が予測される動物種: Chimpanzee, Rhesus monkey, Gorilla 
免疫原	Synthetic peptide, corresponding to a region between residues 200 and 250 of Human RFX1 (NP_002909.4).
ポジティブ・コントロール	HeLa whole cell lysate (ab150035).
特記事項	<p>The Life Science industry has been in the grips of a reproducibility crisis for a number of years. Abcam is leading the way in addressing this with our range of recombinant monoclonal antibodies and knockout edited cell lines for gold-standard validation. Please check that this product meets your needs before purchasing.</p> <p>If you have any questions, special requirements or concerns, please send us an inquiry and/or contact our Support team ahead of purchase. Recommended alternatives for this product can be found below, along with publications, customer reviews and Q&As</p>

製品の特性

製品の状態	Liquid
保存方法	Shipped at 4°C. Upon delivery aliquot and store at -20°C. Avoid freeze / thaw cycles.
バッファー	pH: 7.00 Preservative: 0.09% Sodium azide Constituent: Tris citrate/phosphate
精製度	pH 7-8 Immunogen affinity purified
特記事項(精製)	ab110927 was affinity purified using an epitope specific to RFX1 immobilized on solid support.
ポリ/モノ	ポリクローナル
アイソタイプ	IgG

アプリケーション

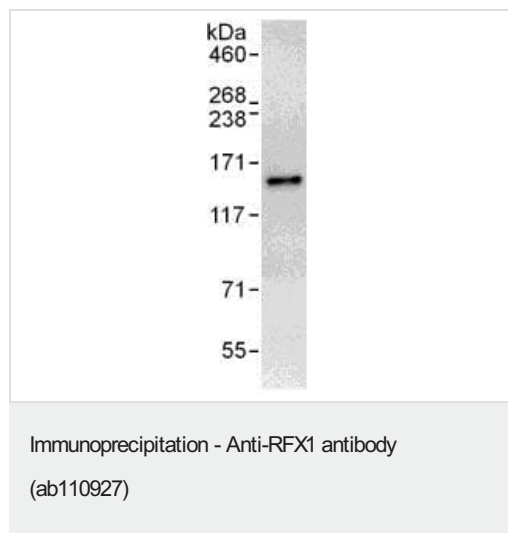
The Abpromise guarantee **Abpromise保証は、** 次のテスト済みアプリケーションにおけるab110927の使用に適用されます
アプリケーションノートには、推奨の開始希釈率がありますが、適切な希釈率につきましてはご検討ください。

アプリケーション	Abreviews	特記事項
IP		Use at 2-5 µg/mg of lysate.

ターゲット情報

機能	Regulatory factor essential for MHC class II genes expression. Binds to the X boxes of MHC class II genes. Also binds to an inverted repeat (ENH1) required for hepatitis B virus genes expression and to the most upstream element (alpha) of the RPL30 promoter.
配列類似性	Belongs to the RFX family. Contains 1 RFX-type winged-helix DNA-binding domain.
細胞内局在	Nucleus.

画像



Detection of RFX1 by Western Blot of Immunoprecipitate.
anti-RFX1 at 0.4µg/ml staining RFX1 in HeLa whole cell lysate
immunoprecipitated using ab110927 at 6µg/mg lysate (1 mg/IP;
20% of IP loaded/lane).
Detection: Chemiluminescence with exposure time of 10 seconds.

Please note: All products are "FOR RESEARCH USE ONLY. NOT FOR USE IN DIAGNOSTIC PROCEDURES"

Our Abpromise to you: Quality guaranteed and expert technical support

- Replacement or refund for products not performing as stated on the datasheet
- Valid for 12 months from date of delivery
- Response to your inquiry within 24 hours
- We provide support in Chinese, English, French, German, Japanese and Spanish
- Extensive multi-media technical resources to help you
- We investigate all quality concerns to ensure our products perform to the highest standards

If the product does not perform as described on this datasheet, we will offer a refund or replacement. For full details of the Abpromise, please visit <https://www.abcam.co.jp/abpromise> or contact our technical team.

Terms and conditions

- Guarantee only valid for products bought direct from Abcam or one of our authorized distributors