

Anti-RFP antibody ab124754

★★★★★ [2 Abreviews](#) [21 References](#) [画像数 6](#)

製品の概要

製品名	Anti-RFP antibody
製品の詳細	Rabbit polyclonal to RFP
由来種	Rabbit
アプリケーション	適用あり: WB, IHC-P
種交差性	交差種: Species independent
免疫原	Recombinant full length protein corresponding to RFP. Corresponding to the full length amino acid sequence (234aa) derived from the mushroom polyp coral <i>Discosoma</i> .
特記事項	<p>The Life Science industry has been in the grips of a reproducibility crisis for a number of years. Abcam is leading the way in addressing this with our range of recombinant monoclonal antibodies and knockout edited cell lines for gold-standard validation. Please check that this product meets your needs before purchasing.</p> <p>If you have any questions, special requirements or concerns, please send us an inquiry and/or contact our Support team ahead of purchase. Recommended alternatives for this product can be found below, along with publications, customer reviews and Q&As</p>

製品の特性

製品の状態	Liquid
保存方法	Shipped at 4°C. Upon delivery aliquot and store at -20°C or -80°C. Avoid repeated freeze / thaw cycles.
バッファー	Preservative: 0.01% Sodium azide Constituents: 0.42% Potassium phosphate, 0.88% Sodium chloride
精製度	Immunogen affinity purified
ポリ/モノ	ポリクローナル
アイソタイプ	IgG

アプリケーション

The Abpromise guarantee Abpromise保証は、 次のテスト済みアプリケーションにおけるab124754の使用に適用されます
 アプリケーションノートには、推奨の開始希釈率がありますが、適切な希釈率につきましてはご検討ください。

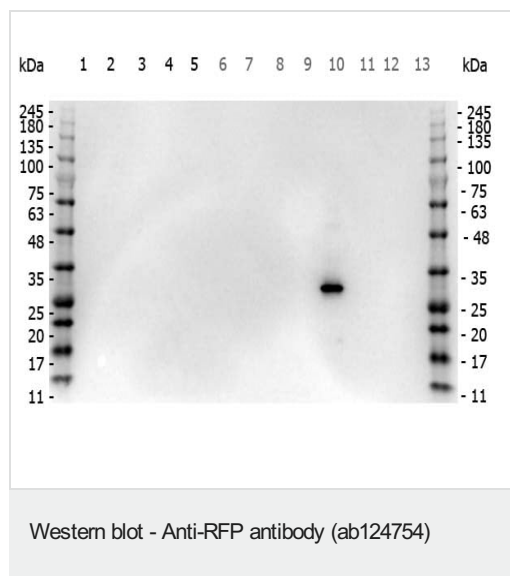
アプリケーション	Abreviews	特記事項
WB		1/1000 - 1/50000.
IHC-P	★★★★★ (2)	1/200 - 1/20000.

ターゲット情報

関連性

Fluorescent proteins have become a useful and ubiquitous tool for making chimeric proteins, where they function as a fluorescent protein tag. Typically they tolerate N- and C-terminal fusion to a broad variety of proteins. They have been expressed in most known cell types and are used as a noninvasive fluorescent marker in living cells and organisms. They enable a wide range of applications where they have functioned as a cell lineage tracer, reporter of gene expression, or as a measure of protein-protein interactions.

画像



All lanes : Anti-RFP antibody (ab124754) at 1 µg/ml

Lane 1 : HEK-293 (human epithelial cell line from embryonic kidney) cell lysate at 10 µg

Lane 2 : HeLa (human epithelial cell line from cervix adenocarcinoma) cell lysate at 10 µg

Lane 3 : CHO-K1 (chinese hamster ovary cell line) cell lysate at 10 µg

Lane 4 : MDA-MB-231 (human breast adenocarcinoma cell line) cell lysate at 10 µg

Lane 5 : A431 (human epidermoid carcinoma cell line) cell lysate at 10 µg

Lane 6 : Jurkat (human T cell leukemia cell line from peripheral blood) cell lysate at 10 µg

Lane 7 : NIH/3T3 (mouse embryo fibroblast cell line) cell lysate at 10 µg

Lane 8 : E-coli HCP Control at 10 µg

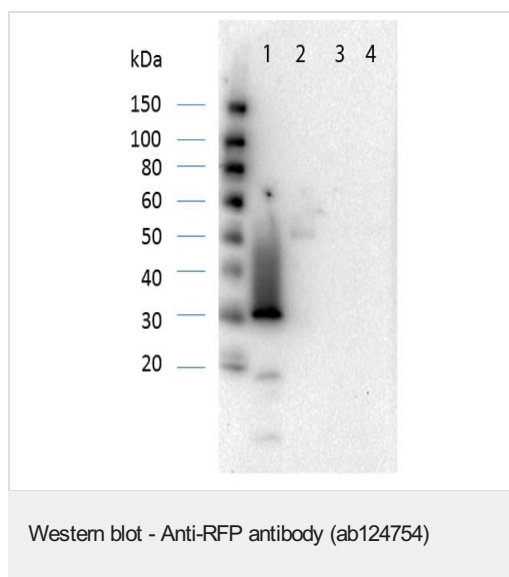
Lane 9 : FLAG Positive Control Lysate at 10 µg

Lane 10 : Red Fluorescent Protein at 0.05 µg

Lane 11 : Green Fluorescent Protein at 0.05 µg

Lane 12 : Glutathione-S-Transferase Protein at 0.05 µg

Lane 13 : Maltose Binding Protein at 0.05 µg



All lanes : Anti-RFP antibody (ab124754) at 1/1000 dilution

Lane 1 : RFP with Blocking buffer

Lane 2 : Human IgG with Blocking buffer

Lane 3 : Goat IgG with Blocking buffer

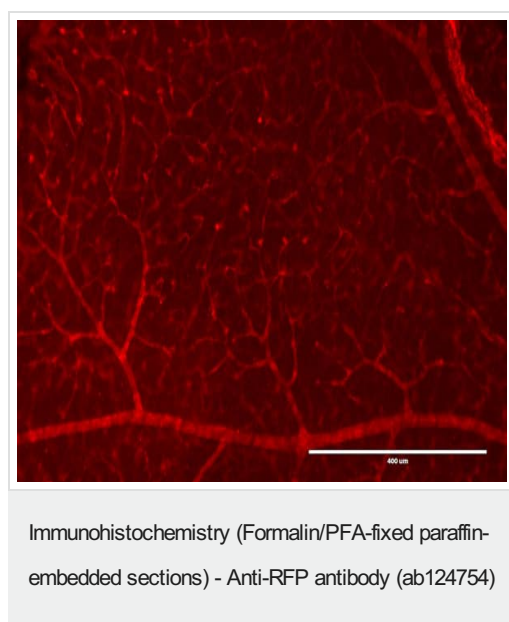
Lane 4 : Mouse IgG with Blocking buffer

Lysates/proteins at 0.05 µg per lane.

Secondary

All lanes : Rabbit peroxidase conjugate at 1/40000 dilution

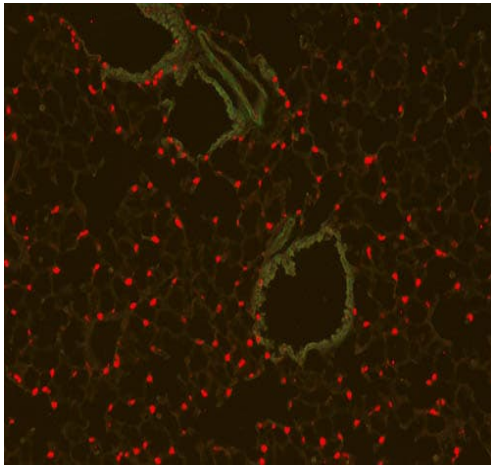
Observed band size: 30 kDa



PFA-fixed DsRed transgenic mouse retina tissue stained for RFP using ab124754 at 1/100 dilution in immunohistochemical analysis.

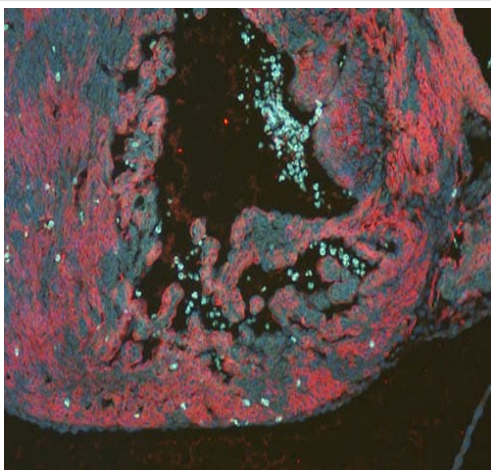
Blocking: 3% BSA, 0.3% Triton.

Secondary antibody: Alexa488 secondary antibody at 1:10,000 for 4 hours at RT.



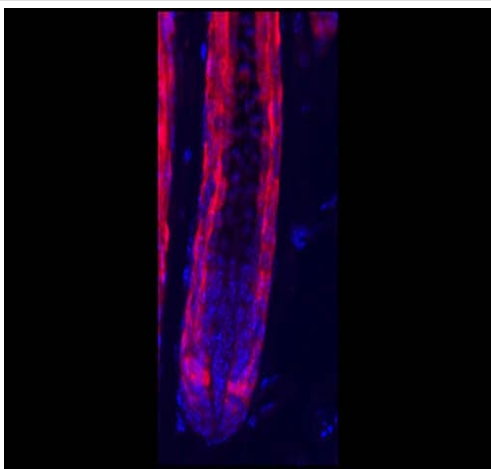
Immunohistochemistry (Formalin/PFA-fixed paraffin-embedded sections) - Anti-RFP antibody (ab124754)

Immunohistochemical immunofluorescence analysis of 4% PFA fixed mouse lung sections, labelling RFP with ab124754 at 1/50 dilution for 1 hour at room temperature. The secondary used was a rabbit fluorescein conjugate at 1/250 incubated for 1 hour at room temperature.



Immunohistochemistry (Formalin/PFA-fixed paraffin-embedded sections) - Anti-RFP antibody (ab124754)

Immunohistochemical immunofluorescence analysis of 4% PFA fixed mouse embryonic myocardial tissue, labelling RFP with ab124754 at a 1/50 dilution for 1 hour at room temperature. The secondary used was a a rabbit fluorescein conjugate at a 1/250 dilution for 1 hour at room temperature. Counterstain is an expression of RFP in red Tomato transgenic mice.



Immunohistochemistry (Formalin/PFA-fixed paraffin-embedded sections) - Anti-RFP antibody (ab124754)

Immunohistochemical immunofluorescence analysis of 0.5% PFA fixed Rabbit Hair follicle section labelling RFP using ab124754 at a dilution of 10 ug/mL for 1 hour at room temperature. The secondary used was a blue rabbit fluorescein conjugate at a 1/10,000 for 45 mins at room temperature. A counterstain against HOP-derived cells was used (red).

Please note: All products are "FOR RESEARCH USE ONLY. NOT FOR USE IN DIAGNOSTIC PROCEDURES"

Our Abpromise to you: Quality guaranteed and expert technical support

- Replacement or refund for products not performing as stated on the datasheet
- Valid for 12 months from date of delivery
- Response to your inquiry within 24 hours

- We provide support in Chinese, English, French, German, Japanese and Spanish
- Extensive multi-media technical resources to help you
- We investigate all quality concerns to ensure our products perform to the highest standards

If the product does not perform as described on this datasheet, we will offer a refund or replacement. For full details of the Abpromise, please visit <https://www.abcam.co.jp/abpromise> or contact our technical team.

Terms and conditions

- Guarantee only valid for products bought direct from Abcam or one of our authorized distributors