


Anti-RFC1 antibody ab3853

★★★★☆ **1 Abreviews** **4 References** 画像数 **1**

製品の概要

製品名	Anti-RFC1 antibody
製品の詳細	Rabbit polyclonal to RFC1
由来種	Rabbit
アプリケーション	適用あり: WB
種交差性	交差種: Human 交差が予測される動物種: Mouse, Chimpanzee, Gorilla 
免疫原	<p>Synthetic peptide within Human RFC1. The exact immunogen sequence used to generate this antibody is proprietary information. If additional detail on the immunogen is needed to determine the suitability of the antibody for your needs, please contact our Scientific Support team to discuss your requirements.</p> <p>Database link: P35251</p>
ポジティブ・コントロール	WB: HeLa and HEK-293T whole cell lysates.
特記事項	<p>The Life Science industry has been in the grips of a reproducibility crisis for a number of years. Abcam is leading the way in addressing this with our range of recombinant monoclonal antibodies and knockout edited cell lines for gold-standard validation. Please check that this product meets your needs before purchasing.</p> <p>If you have any questions, special requirements or concerns, please send us an inquiry and/or contact our Support team ahead of purchase. Recommended alternatives for this product can be found below, along with publications, customer reviews and Q&As</p>

製品の特性

製品の状態	Liquid
保存方法	Shipped at 4°C. Upon delivery aliquot and store at -20°C. Avoid freeze / thaw cycles.
バッファー	<p>pH: 7</p> <p>Preservative: 0.1% Sodium azide</p> <p>Constituents: 0.021% PBS, 1.764% Sodium citrate, 1.815% Tris</p>
精製度	Immunogen affinity purified
ポリ/モノ	ポリクローナル
アイソタイプ	IgG

アプリケーション

The Abpromise guarantee

Abpromise保証は、次のテスト済みアプリケーションにおけるab3853の使用に適用されます

アプリケーションノートには、推奨の開始希釈率がありますが、適切な希釈率につきましてはご確認ください。

アプリケーション	Abreviews	特記事項
WB	★★★★★ (1)	1/1000 - 1/10000. Predicted molecular weight: 128 kDa.

ターゲット情報

機能

The elongation of primed DNA templates by DNA polymerase delta and epsilon requires the action of the accessory proteins PCNA and activator 1. This subunit binds to the primer-template junction. Binds the PO-B transcription element as well as other GA rich DNA sequences. Could play a role in DNA transcription regulation as well as DNA replication and/or repair. Can bind single- or double-stranded DNA.

Interacts with C-terminus of PCNA. 5' phosphate residue is required for binding of the N-terminal DNA-binding domain to duplex DNA, suggesting a role in recognition of non-primer template DNA structures during replication and/or repair.

組織特異性

Wide tissue distribution. Undetectable in placental tissue.

配列類似性

Belongs to the activator 1 large subunit family.

Contains 1 BRCT domain.

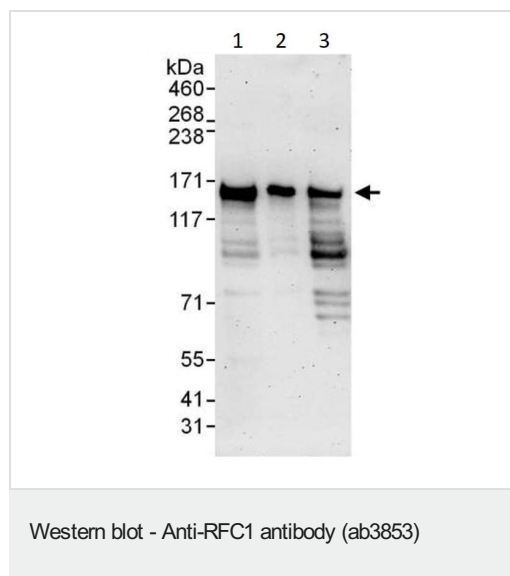
翻訳後修飾

Phosphorylated upon DNA damage, probably by ATM or ATR.

細胞内局在

Nucleus.

画像



All lanes : Anti-RFC1 antibody (ab3853) at 0.4 µg/ml

Lane 1 : HeLa (Human cervix adenocarcinoma epithelial cell)

whole cell lysate at 50 µg

Lane 2 : HeLa (Human cervix adenocarcinoma epithelial cell)

whole cell lysate at 15 µg

Lane 3 : HEK-293T (Human epithelial cell line from embryonic

kidney transformed with large T antigen) whole cell lysate at 50 µg

Predicted band size: 128 kDa

Exposure time: 3 minutes

Please note: All products are "FOR RESEARCH USE ONLY. NOT FOR USE IN DIAGNOSTIC PROCEDURES"

Our Abpromise to you: Quality guaranteed and expert technical support

- Replacement or refund for products not performing as stated on the datasheet
- Valid for 12 months from date of delivery
- Response to your inquiry within 24 hours

- We provide support in Chinese, English, French, German, Japanese and Spanish
- Extensive multi-media technical resources to help you
- We investigate all quality concerns to ensure our products perform to the highest standards

If the product does not perform as described on this datasheet, we will offer a refund or replacement. For full details of the Abpromise, please visit <https://www.abcam.co.jp/abpromise> or contact our technical team.

Terms and conditions

- Guarantee only valid for products bought direct from Abcam or one of our authorized distributors