

Anti-Reticulon 1A antibody [MON160] ab8957

3 References [画像数 3](#)

製品の概要

製品名	Anti-Reticulon 1A antibody [MON160]
製品の詳細	Mouse monoclonal [MON160] to Reticulon 1A
由来種	Mouse
特異性	This antibody exclusively recognizes the 135 kDa Reticulon-1A protein in immunoblots of NCI-H82 and other SCLC cell lines, and stains normal and pathological neural and neuroendocrine tissues
アプリケーション	適用あり: IHC-P
種交差性	交差種: Human
免疫原	Recombinant fragment within Reticulon 1A aa 1-800. The exact immunogen sequence used to generate this antibody is proprietary information. If additional detail on the immunogen is needed to determine the suitability of the antibody for your needs, please <u>contact</u> our Scientific Support team to discuss your requirements. Partially purified bacterially expressed Reticulon-1A (NSP-A) hybrid protein (beta-GAL-NSP-A 6-776). Database link: <u>Q16799</u>
エピトープ	This antibody is reactive with residues 174-337 of Reticulon-1A.
特記事項	<p>A central structure in the secretory pathway of the cell comprises an elaborate endomembranous system with the multifunctional endoplasmic reticulum (ER) as a major constituent. Newly synthesized secretory proteins and a variety of resident proteins of the pathway enter the rough endoplasmic reticulum. Subsequently, the proteins may be sorted selectively to different membrane-delimited organelles including the Golgi apparatus, endosomes, lysosomes and secretory vesicles. Abcam provides antibodies to a new family of ER-associated proteins, the reticulons, which show a tissue specific distribution.</p> <p>The Life Science industry has been in the grips of a reproducibility crisis for a number of years. Abcam is leading the way in addressing this with our range of recombinant monoclonal antibodies and knockout edited cell lines for gold-standard validation. Please check that this product meets your needs before purchasing.</p> <p>If you have any questions, special requirements or concerns, please send us an inquiry and/or contact our Support team ahead of purchase. Recommended alternatives for this product can be found below, along with publications, customer reviews and Q&As</p>

製品の特性

製品の状態	Liquid
保存方法	Shipped at 4°C. Store at +4°C short term (1-2 weeks). Upon delivery aliquot. Store at -20°C or -80°C. Avoid freeze / thaw cycle.
バッファー	Preservative: 0.09% Sodium azide Constituent: PBS
精製度	Protein G purified
一次抗体 備考	A central structure in the secretory pathway of the cell comprises an elaborate endomembranous system with the multifunctional endoplasmic reticulum (ER) as a major constituent. Newly synthesized secretory proteins and a variety of resident proteins of the pathway enter the rough endoplasmic reticulum. Subsequently, the proteins may be sorted selectively to different membrane-delimited organelles including the Golgi apparatus, endosomes, lysosomes and secretory vesicles. Abcam provides antibodies to a new family of ER-associated proteins, the reticulons, which show a tissue specific distribution.
ポリ/モノ	モノクローナル
クローン名	MON160
ミエローマ	unknown
アイソタイプ	IgG1

アプリケーション

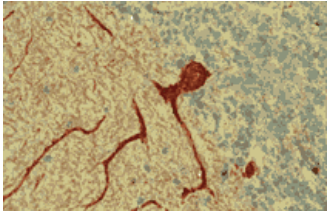
The Abpromise guarantee **Abpromise保証は、次のテスト済みアプリケーションにおけるab8957の使用に適用されます**
 アプリケーションノートには、推奨の開始希釈率がありますが、適切な希釈率につきましてはご検討ください。

アプリケーション	Abreviews	特記事項
IHC-P		Use at an assay dependent concentration. Recommended range is 1/50 - 1/100 for immunohistochemistry with avidin-biotinylated horseradish peroxidase complex (ABC) as detection reagent.

ターゲット情報

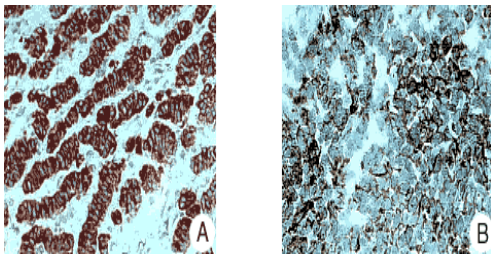
関連性	Reticulon 1A may be involved in neuroendocrine secretion or in membrane trafficking in neuroendocrine cells. It is expressed in neural and neuroendocrine tissues and cell cultures derived therefrom. Expression of isoform RTN1-C is strongly correlated with neuronal differentiation. Different isoforms have been described as a result of alternative splicing.
細胞内局在	Endoplasmic reticulum

画像



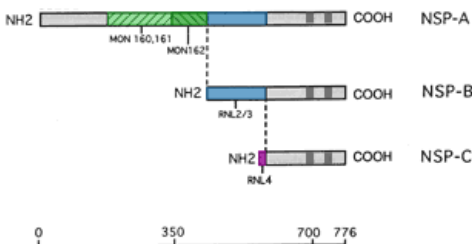
NSP-A immunostaining in human cerebellum using ab8957.

Immunohistochemistry (Formalin/PFA-fixed paraffin-embedded sections) - Anti-Reticulon 1A antibody
[MON160] (ab8957)



Human carcinoid (A) and small cell lung carcinoma (B) in paraffin sections, immunostained for NSP-A with ab8957.

Immunohistochemistry (Formalin/PFA-fixed paraffin-embedded sections) - Anti-Reticulon 1A antibody
[MON160] (ab8957)



Schematic representation of the deduced domain structure of the three NSP-gene encoded proteins, NSP-A, NSP-B and NSP-C and mapping of the epitopes recognized by the different NSP monoclonal antibodies.

Schematic Diagram - Anti-Reticulon 1A antibody
[MON160] (ab8957)

Please note: All products are "FOR RESEARCH USE ONLY. NOT FOR USE IN DIAGNOSTIC PROCEDURES"

Our Abpromise to you: Quality guaranteed and expert technical support

- Replacement or refund for products not performing as stated on the datasheet
- Valid for 12 months from date of delivery
- Response to your inquiry within 24 hours

- We provide support in Chinese, English, French, German, Japanese and Spanish
- Extensive multi-media technical resources to help you
- We investigate all quality concerns to ensure our products perform to the highest standards

If the product does not perform as described on this datasheet, we will offer a refund or replacement. For full details of the Abpromise, please visit <https://www.abcam.co.jp/abpromise> or contact our technical team.

Terms and conditions

- Guarantee only valid for products bought direct from Abcam or one of our authorized distributors