

Anti-Renin antibody [EPR6433] - BSA and Azide free ab248098

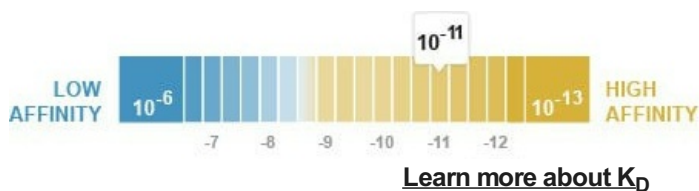
リコンビナント RabMAb

画像数 4

製品の概要

製品名	Anti-Renin antibody [EPR6433] - BSA and Azide free
製品の詳細	Rabbit monoclonal [EPR6433] to Renin - BSA and Azide free
由来種	Rabbit
アプリケーション	適用あり: Flow Cyt (Intra), WB 適用なし: ICC/IF, IHC-P or IP
種交差性	交差種: Human 非交差種: Mouse, Rat
免疫原	Synthetic peptide. This information is proprietary to Abcam and/or its suppliers.
特記事項	<p>ab248098 is the carrier-free version of ab125012.</p> <p>Our carrier-free antibodies are typically supplied in a PBS-only formulation, purified and free of BSA, sodium azide and glycerol. The carrier-free buffer and high concentration allow for increased conjugation efficiency.</p> <p>This conjugation-ready format is designed for use with fluorochromes, metal isotopes, oligonucleotides, and enzymes, which makes them ideal for antibody labelling, functional and cell-based assays, flow-based assays (e.g. mass cytometry) and Multiplex Imaging applications.</p> <p>Use our conjugation kits for antibody conjugates that are ready-to-use in as little as 20 minutes with <1 minute hands-on-time and 100% antibody recovery: available for fluorescent dyes, HRP, biotin and gold.</p> <p>This product is compatible with the Maxpar[®] Antibody Labeling Kit from Fluidigm, without the need for antibody preparation. Maxpar[®] is a trademark of Fluidigm Canada Inc.</p> <p>This product is a recombinant monoclonal antibody, which offers several advantages including:</p> <ul style="list-style-type: none">- High batch-to-batch consistency and reproducibility- Improved sensitivity and specificity- Long-term security of supply- Animal-free production <p>For more information see here.</p> <p>Our RabMAb[®] technology is a patented hybridoma-based technology for making rabbit monoclonal antibodies. For details on our patents, please refer to RabMAb[®] patents.</p>

製品の状態 Liquid
 保存方法 Shipped at 4°C. Store at +4°C. Do Not Freeze.
 解離定数 (K_D 値) K_D = 1.70 x 10⁻¹¹ M



バッファー pH: 7.2
 Constituent: PBS
 キャリア・フリー はい
 精製度 Protein A purified
 ポリ/モノ モノクローナル
 クローン名 EPR6433
 アイソタイプ IgG

アプリケーション

The Abpromise guarantee **Abpromise保証は、次のテスト済みアプリケーションにおけるab248098の使用に適用されず**
 アプリケーションノートには、推奨の開始希釈率がありますが、適切な希釈率につきましてはご検討ください。

アプリケーション	Abreviews	特記事項
Flow Cyt (Intra)		Use at an assay dependent concentration.
WB		Use at an assay dependent concentration. Detects a band of approximately 47 kDa (predicted molecular weight: 45 kDa).

追加情報 Is unsuitable for ICC/IF, IHC-P or IP.

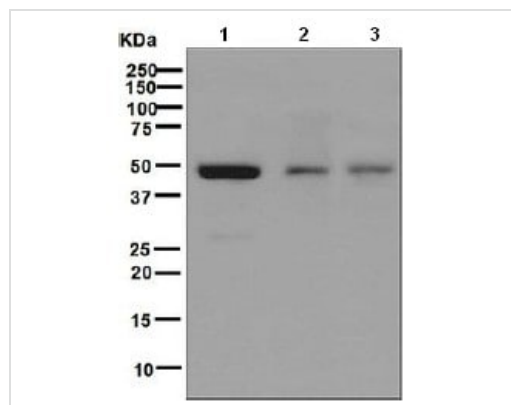
ターゲット情報

機能 Renin is a highly specific endopeptidase, whose only known function is to generate angiotensin I from angiotensinogen in the plasma, initiating a cascade of reactions that produce an elevation of blood pressure and increased sodium retention by the kidney.

関連疾患 Defects in REN are a cause of renal tubular dysgenesis (RTD) [MIM:267430]. RTD is an autosomal recessive severe disorder of renal tubular development characterized by persistent fetal anuria and perinatal death, probably due to pulmonary hypoplasia from early-onset oligohydramnios (the Potter phenotype).
 Defects in REN are the cause of familial juvenile hyperuricemic nephropathy type 2 (HNFJ2) [MIM:613092]. It is a renal disease characterized by juvenile onset of hyperuricemia, slowly progressive renal failure and anemia.

配列類似性 Belongs to the peptidase A1 family.

細胞内局在 Secreted. Membrane. Associated to membranes via binding to ATP6AP2.



Western blot - Anti-Renin antibody [EPR6433] - BSA and Azide free (ab248098)

All lanes : Anti-Renin antibody [EPR6433] ([ab125012](#)) at 1/1000 dilution

Lane 1 : K562 lysate

Lane 2 : 293T (Human embryonic kidney epithelial cell) cell lysate

Lane 3 : HepG2 cell lysate

Lysates/proteins at 10 µg per lane.

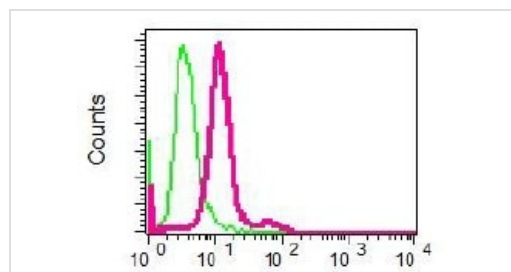
Secondary

All lanes : HRP labelled goat anti-rabbit at 1/2000 dilution

Predicted band size: 45 kDa

Observed band size: 47 kDa

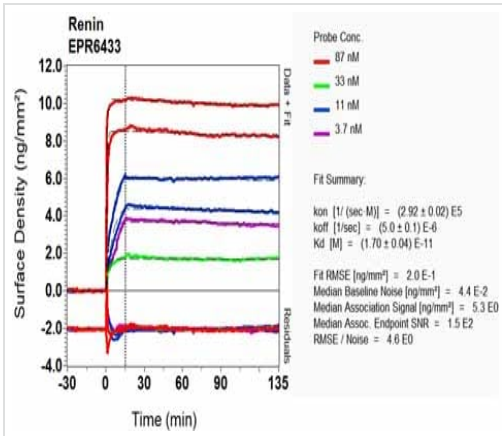
This data was developed using [ab125012](#), the same antibody clone in a different buffer formulation.



Flow Cytometry (Intracellular) - Anti-Renin antibody [EPR6433] - BSA and Azide free (ab248098)

This data was developed using [ab125012](#), the same antibody clone in a different buffer formulation.

Intracellular flow cytometric analysis of permeabilized K562 cells using [ab125012](#) at 1/10 shown in red or a rabbit IgG negative control shown in green.



OI-RD Scanning - Anti-Renin antibody [EPR6433] - BSA and Azide free (ab248098)

This data was developed using [ab125012](#), the same antibody clone in a different buffer formulation. Equilibrium disassociation constant (K_D)

Learn more about K_D

[Click here to learn more about \$K_D\$](#)

Why choose a recombinant antibody?

Research with confidence
Consistent and reproducible results

Long-term and scalable supply
Recombinant technology

Success from the first experiment
Confirmed specificity

Ethical standards compliant
Animal-free production

Anti-Renin antibody [EPR6433] - BSA and Azide free (ab248098)

Please note: All products are "FOR RESEARCH USE ONLY. NOT FOR USE IN DIAGNOSTIC PROCEDURES"

Our Abpromise to you: Quality guaranteed and expert technical support

- Replacement or refund for products not performing as stated on the datasheet
- Valid for 12 months from date of delivery
- Response to your inquiry within 24 hours
- We provide support in Chinese, English, French, German, Japanese and Spanish
- Extensive multi-media technical resources to help you
- We investigate all quality concerns to ensure our products perform to the highest standards

If the product does not perform as described on this datasheet, we will offer a refund or replacement. For full details of the Abpromise, please visit <https://www.abcam.co.jp/abpromise> or contact our technical team.

Terms and conditions

- Guarantee only valid for products bought direct from Abcam or one of our authorized distributors