

Anti-Renilla Luciferase antibody [EPR17792] ab185926

リコンビナント **RabMAb**

1 Abreviews 1 References 画像数 4

製品の概要

製品名	Anti-Renilla Luciferase antibody [EPR17792]
製品の詳細	Rabbit monoclonal [EPR17792] to Renilla Luciferase
由来種	Rabbit
アプリケーション	適用あり: ICC/IF, WB, Flow Cyt
種交差性	交差種: Renilla reniformis 非交差種: Mouse, Rat
免疫原	Synthetic peptide. This information is proprietary to Abcam and/or its suppliers.
ポジティブ・コントロール	WB: Renilla Luciferase transfected HEK293T whole cell lysate. ICC/IF: Renilla Luciferase transfected HEK293T cells. Flow Cyt: Renilla Luciferase transfected HEK293T cells.
特記事項	This product is a recombinant monoclonal antibody, which offers several advantages including: <ul style="list-style-type: none"> - High batch-to-batch consistency and reproducibility - Improved sensitivity and specificity - Long-term security of supply - Animal-free production For more information see here . Our RabMAb [®] technology is a patented hybridoma-based technology for making rabbit monoclonal antibodies. For details on our patents, please refer to RabMAb[®] patents .

製品の特性

製品の状態	Liquid
保存方法	Shipped at 4°C. Store at +4°C short term (1-2 weeks). Upon delivery aliquot. Store at -20°C long term. Avoid freeze / thaw cycle.
バッファー	pH: 7.2 Preservative: 0.01% Sodium azide Constituents: PBS, 40% Glycerol (glycerin, glycerine), 0.05% BSA
精製度	Protein A purified
ポリ/モノ	モノクローナル
クローン名	EPR17792

アプリケーション

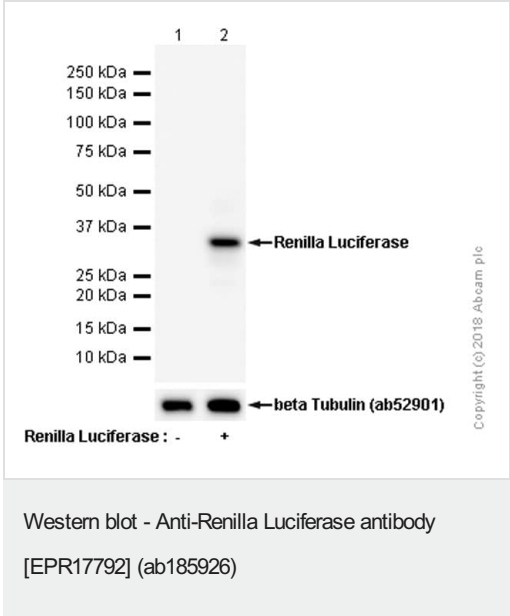
The Abpromise guarantee **Abpromise保証は、** 次のテスト済みアプリケーションにおけるab185926の使用に適用されます
アプリケーションノートには、推奨の開始希釈率がありますが、適切な希釈率につきましてはご検討ください。

アプリケーション	Abreviews	特記事項
ICC/IF		1/1000.
WB		1/10000. Detects a band of approximately 36 kDa (predicted molecular weight: 36 kDa).
Flow Cyt		Use at an assay dependent concentration.

ターゲット情報

関連性
The Green Renilla luciferase is a 36kDa protein produced by a derivative of the wild type Renilla luciferase gene from the sea pansy, Renilla reniformis. Compared to the wild type luciferase, Green Renilla is more stable in serum and has an the emission spectrum that is shifted toward the green region. The protein provides extremely bright flash signal that decays rapidly.

画像



All lanes : Anti-Renilla Luciferase antibody [EPR17792] (ab185926) at 1/1000 dilution (Purified)

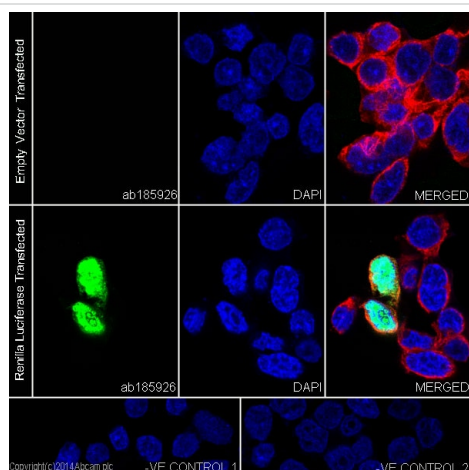
Lane 1 : 293T (Human embryonic kidney epithelial cell) transfected with an empty vector (vector control), whole cell lysate

Lane 2 : 293T (Human embryonic kidney epithelial cell) transfected with Renilla Luciferase expression vector, whole cell lysate

Lysates/proteins at 15 µg per lane.

Secondary
All lanes : Goat Anti-Rabbit IgG H&L (HRP) (**ab97051**) at 1/20000 dilution

Predicted band size: 36 kDa
Observed band size: 36 kDa

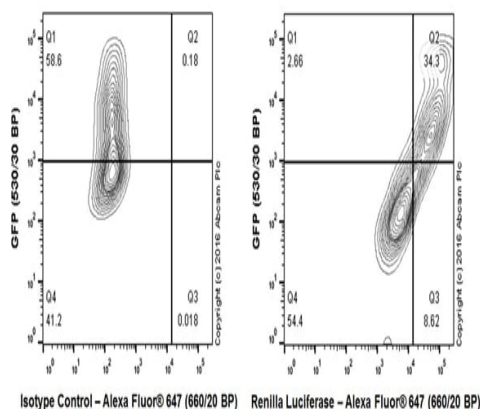


Immunocytochemistry/ Immunofluorescence - Anti-Renilla Luciferase antibody [EPR17792] (ab185926)

Immunofluorescent analysis of 4% paraformaldehyde-fixed, 0.1% Triton X-100 permeabilized HEK293T (Human epithelial cells from embryonic kidney) cells transfected with Empty vector or Renilla Luciferase, labeling Renilla Luciferase with ab185926 at 1/1000 dilution, followed by Goat anti-rabbit IgG (Alexa Fluor® 488) ([ab150077](#)) secondary antibody at 1/500 dilution (green). Nuclear staining on HEK293T cells transfected with Renilla Luciferase is observed. The nuclear counter stain is DAPI (blue). Tubulin is detected with [ab7291](#) (anti-Tubulin mouse mAb) at 1/1000 dilution and [ab150120](#) (AlexaFluor®594 Goat anti-Mouse secondary) at 1/500 dilution (red).

The negative controls are as follows;

1. ab185926 at 1/1000 dilution followed by [ab150120](#) (AlexaFluor®594 Goat anti-Mouse secondary) at 1/500 dilution.
2. [ab7291](#) (anti-Tubulin mouse mAb) at 1/1000 dilution followed by [ab150077](#) (Alexa Fluor®488 Goat Anti-Rabbit IgG H&L) at 1/500 dilution.



Flow Cytometry - Anti-Renilla Luciferase antibody [EPR17792] (ab185926)

Flow Cytometry analysis of 293T (Human epithelial cell line from embryonic kidney) transfected with GFP tagged Renilla Luciferase cells labeled with purified ab185926 at 1/70 dilution (10µg/ml, Right panel) (red). Cells were fixed with 4% paraformaldehyde and permeabilised with 90% methanol. A Goat anti rabbit IgG (Alexa Fluor® 647)(1/2000 dilution) was used as the secondary antibody. Rabbit monoclonal IgG (Left panel) was used as the isotype control.

Why choose a recombinant antibody?



Research with confidence
Consistent and reproducible results



Long-term and scalable supply
Recombinant technology



Success from the first experiment
Confirmed specificity



Ethical standards compliant
Animal-free production

Anti-Renilla Luciferase antibody [EPR17792]
(ab185926)

Please note: All products are "FOR RESEARCH USE ONLY. NOT FOR USE IN DIAGNOSTIC PROCEDURES"

Our Abpromise to you: Quality guaranteed and expert technical support

- Replacement or refund for products not performing as stated on the datasheet
- Valid for 12 months from date of delivery
- Response to your inquiry within 24 hours
- We provide support in Chinese, English, French, German, Japanese and Spanish
- Extensive multi-media technical resources to help you
- We investigate all quality concerns to ensure our products perform to the highest standards

If the product does not perform as described on this datasheet, we will offer a refund or replacement. For full details of the Abpromise, please visit <https://www.abcam.co.jp/abpromise> or contact our technical team.

Terms and conditions

- Guarantee only valid for products bought direct from Abcam or one of our authorized distributors