


Anti-REM/GES antibody [EP4482] ab124703

リコンビナント RabMAb[®]

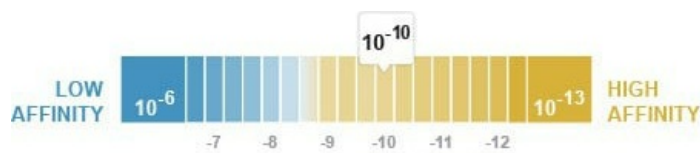
画像数 3

製品の概要

製品名	Anti-REM/GES antibody [EP4482]
製品の詳細	Rabbit monoclonal [EP4482] to REM/GES
由来種	Rabbit
アプリケーション	適用あり: WB 適用なし: Flow Cyt, ICC/IF, IHC-P or IP
種交差性	交差種: Mouse, Human 交差が予測される動物種: Rat 
免疫原	Synthetic peptide within Human REM/GES aa 200-300. The exact sequence is proprietary.
ポジティブ・コントロール	C2C12 and SW1353 cell lysates.
特記事項	This product is a recombinant monoclonal antibody, which offers several advantages including: <ul style="list-style-type: none"> - High batch-to-batch consistency and reproducibility - Improved sensitivity and specificity - Long-term security of supply - Animal-free production For more information see here . Our RabMAb [®] technology is a patented hybridoma-based technology for making rabbit monoclonal antibodies. For details on our patents, please refer to RabMAb[®] patents .

製品の特性

製品の状態	Liquid
保存方法	Shipped at 4°C. Store at -20°C. Stable for 12 months at -20°C.
解離定数 (K _D 値)	K _D = 3.83 x 10 ⁻¹⁰ M



[Learn more about K_D](#)

バッファー	pH: 7.20 Preservative: 0.05% Sodium azide
-------	--

Constituents: 40% Glycerol (glycerin, glycerine), 9.85% Tris glycine, 50% Tissue culture supernatant

精製度 Protein A purified
ポリ/モノ モノクローナル
クローン名 EP4482
アイソタイプ IgG

アプリケーション

The Abpromise guarantee Abpromise保証は、次のテスト済みアプリケーションにおけるab124703の使用に適用されず
アプリケーションノートには、推奨の開始希釈率がありますが、適切な希釈率につきましてはご検討ください。

アプリケーション	Abreviews	特記事項
WB		1/1000 - 1/10000. Detects a band of approximately 39 kDa (predicted molecular weight: 33 kDa).

追加情報 Is unsuitable for Flow Cyt, ICC/IF, IHC-P or IP.

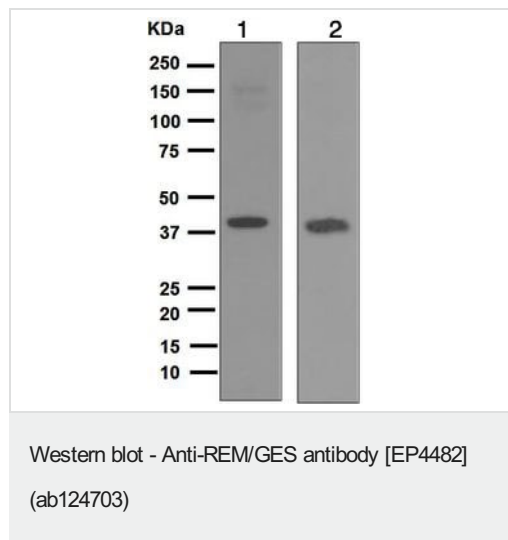
ターゲット情報

機能 Promotes endothelial cell sprouting and actin cytoskeletal reorganization. May be involved in angiogenesis. May function in Ca(2+) signaling.

組織特異性 Most highly expressed in the endothelial lining of the blood vessels in uterus and heart. Lower levels found in spleen, lymph node, kidney and testis. Also found in cells with secretory function such as the islets of Langerhans, lobule/duct epithelium in the breast, bile duct epithelium in the liver, surface epithelium in the endometrial glands of the uterus, colon mucosa and acinar cells in the pancreas and the prostate.

配列類似性 Belongs to the small GTPase superfamily. RGK family.

画像



All lanes : Anti-REM/GES antibody [EP4482] (ab124703) at 1/1000 dilution

Lane 1 : C2C12 cell lysates

Lane 2 : SW1353 cell lysates

Lysates/proteins at 10 µg per lane.

Secondary

All lanes : Goat anti-Rabbit HRP at 1/2000 dilution

Predicted band size: 33 kDa


OI-RD Scanning - Anti-REM/GES antibody [EP4482]
(ab124703)

Equilibrium disassociation constant (K_D)

Learn more about K_D

[Click here to learn more about \$K_D\$](#)

Why choose a recombinant antibody?



- Research with confidence**
Consistent and reproducible results
- Long-term and scalable supply**
Recombinant technology
- Success from the first experiment**
Confirmed specificity
- Ethical standards compliant**
Animal-free production

Anti-REM/GES antibody [EP4482] (ab124703)

Please note: All products are "FOR RESEARCH USE ONLY. NOT FOR USE IN DIAGNOSTIC PROCEDURES"

Our Abpromise to you: Quality guaranteed and expert technical support

- Replacement or refund for products not performing as stated on the datasheet
- Valid for 12 months from date of delivery
- Response to your inquiry within 24 hours
- We provide support in Chinese, English, French, German, Japanese and Spanish
- Extensive multi-media technical resources to help you
- We investigate all quality concerns to ensure our products perform to the highest standards

If the product does not perform as described on this datasheet, we will offer a refund or replacement. For full details of the Abpromise, please visit <https://www.abcam.co.jp/abpromise> or contact our technical team.

Terms and conditions

- Guarantee only valid for products bought direct from Abcam or one of our authorized distributors