

redFluor™ 710 Anti-CD45RO antibody [UCHL1] ab242256

画像数 1

製品の概要

製品名	redFluor™ 710 Anti-CD45RO antibody [UCHL1]
製品の詳細	redFluor™ 710 Mouse monoclonal [UCHL1] to CD45RO
由来種	Mouse
標識	redFluor™ 710
アプリケーション	適用あり: Flow Cyt
種交差性	交差種: Human
免疫原	The details of the immunogen for this antibody are not available.
ポジティブ・コントロール	Flow Cyt: Human peripheral blood lymphocytes.
特記事項	<p>The Life Science industry has been in the grips of a reproducibility crisis for a number of years. Abcam is leading the way in addressing this with our range of recombinant monoclonal antibodies and knockout edited cell lines for gold-standard validation. Please check that this product meets your needs before purchasing.</p> <p>If you have any questions, special requirements or concerns, please send us an inquiry and/or contact our Support team ahead of purchase. Recommended alternatives for this product can be found below, along with publications, customer reviews and Q&As</p>

製品の特性

製品の状態	Liquid
保存方法	Shipped at 4°C. Store at +4°C. Store In the Dark.
バッファー	<p>pH: 7.20</p> <p>Preservative: 0.09% Sodium azide</p> <p>Constituents: 0.12% Monobasic dihydrogen sodium phosphate, 0.87% Sodium chloride, 0.1% Gelatin</p>
精製度	Affinity purified
特記事項(精製)	Purified from TCS via affinity chromatography.
ポリ/モノ	モノクローナル
クローン名	UCHL1
アイソタイプ	IgG2a
軽鎖の種類	kappa

アプリケーション

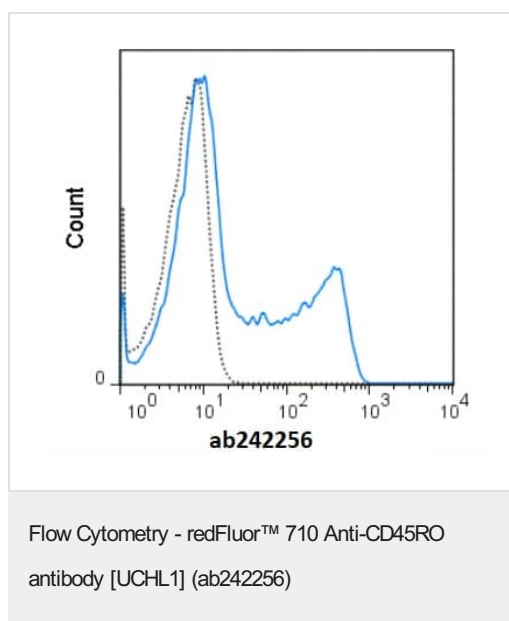
The Abpromise guarantee Abpromise保証は、次のテスト済みアプリケーションにおけるab242256の使用に適用されます
アプリケーションノートには、推奨の開始希釈率がありますが、適切な希釈率につきましてはご検討ください。

アプリケーション	Abreviews	特記事項
Flow Cyt		Use at an assay dependent concentration. The antibody has been diluted for use at 5 µl per test, defined as the amount of antibody that will stain a cell sample in a final volume of approximately 100 µl. The number of cells within a sample should be determined empirically, but typically ranges between 1 x 10e5 to 1 x 10e8 cells.

ターゲット情報

機能	Protein tyrosine-protein phosphatase required for T-cell activation through the antigen receptor. Acts as a positive regulator of T-cell coactivation upon binding to DPP4. The first PTPase domain has enzymatic activity, while the second one seems to affect the substrate specificity of the first one. Upon T-cell activation, recruits and dephosphorylates SKAP1 and FYN. Dephosphorylates LYN, and thereby modulates LYN activity.
関連疾患	Defects in PTPRC are a cause of severe combined immunodeficiency autosomal recessive T-cell-negative/B-cell-positive/NK-cell-positive (T(-)B(+)NK(+)) SCID [MIM:608971]. A form of severe combined immunodeficiency (SCID), a genetically and clinically heterogeneous group of rare congenital disorders characterized by impairment of both humoral and cell-mediated immunity, leukopenia, and low or absent antibody levels. Patients present in infancy recurrent, persistent infections by opportunistic organisms. The common characteristic of all types of SCID is absence of T-cell-mediated cellular immunity due to a defect in T-cell development. Genetic variations in PTPRC are involved in multiple sclerosis susceptibility (MS) [MIM:126200]. MS is a neurodegenerative disorder characterized by the gradual accumulation of focal plaques of demyelination particularly in the periventricular areas of the brain. Peripheral nerves are not affected. Onset usually in third or fourth decade with intermittent progression over an extended period. The cause is still uncertain.
配列類似性	Belongs to the protein-tyrosine phosphatase family. Receptor class 1/6 subfamily. Contains 2 fibronectin type-III domains. Contains 2 tyrosine-protein phosphatase domains.
ドメイン	The first PTPase domain interacts with SKAP1.
翻訳後修飾	Heavily N- and O-glycosylated.
細胞内局在	Membrane. Membrane raft. Colocalized with DPP4 in membrane rafts.

画像



Flow Cytometric analysis of human peripheral blood lymphocytes labeling CD45RO with 5 μ l (0.5 μ g) ab242256 (solid line) or 0.5 μ g redFluor™ 710 Mouse IgG2a isotype control (dashed line).

Please note: All products are "FOR RESEARCH USE ONLY. NOT FOR USE IN DIAGNOSTIC PROCEDURES"

Our Abpromise to you: Quality guaranteed and expert technical support

- Replacement or refund for products not performing as stated on the datasheet
- Valid for 12 months from date of delivery
- Response to your inquiry within 24 hours
- We provide support in Chinese, English, French, German, Japanese and Spanish
- Extensive multi-media technical resources to help you
- We investigate all quality concerns to ensure our products perform to the highest standards

If the product does not perform as described on this datasheet, we will offer a refund or replacement. For full details of the Abpromise, please visit <https://www.abcam.co.jp/abpromise> or contact our technical team.

Terms and conditions

- Guarantee only valid for products bought direct from Abcam or one of our authorized distributors