


redFluor™ 710 Anti-CD3 antibody [UCHT1] ab241935

画像数 1

製品の概要

製品名	redFluor™ 710 Anti-CD3 antibody [UCHT1]
製品の詳細	redFluor™ 710 Mouse monoclonal [UCHT1] to CD3
由来種	Mouse
標識	redFluor™ 710
特異性	ab241935 is specific for human CD3e. It reacts with both surface-expressed and intracellular CD3e protein.
アプリケーション	適用あり: Flow Cyt
種交差性	交差種: Human 交差が予測される動物種: Chimpanzee 
免疫原	The details of the immunogen for this antibody are not available.
ポジティブ・コントロール	Flow Cyt: Human peripheral blood lymphocytes.
特記事項	<p>The Life Science industry has been in the grips of a reproducibility crisis for a number of years. Abcam is leading the way in addressing this with our range of recombinant monoclonal antibodies and knockout edited cell lines for gold-standard validation. Please check that this product meets your needs before purchasing.</p> <p>If you have any questions, special requirements or concerns, please send us an inquiry and/or contact our Support team ahead of purchase. Recommended alternatives for this product can be found below, along with publications, customer reviews and Q&As</p>

製品の特性

製品の状態	Liquid
保存方法	Shipped at 4°C. Store at +4°C. Store In the Dark.
バッファー	pH: 7.20 Preservative: 0.09% Sodium azide Constituents: 0.12% Monobasic dihydrogen sodium phosphate, 0.87% Sodium chloride, 0.1% Gelatin
精製度	Affinity purified
特記事項 (精製)	ab241935 was purified from tissue culture supernatant via affinity chromatography. The purified antibody was conjugated under optimal conditions, with unreacted dye removed from the

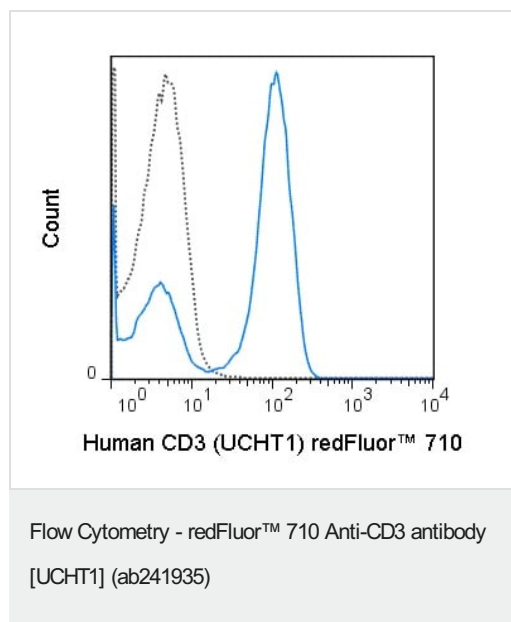
	preparation.
ポリ/モノ	モノクローナル
クローン名	UCHT1
アイソタイプ	IgG1
軽鎖の種類	kappa

アプリケーション

The Abpromise guarantee **Abpromise保証は、次のテスト済みアプリケーションにおけるab241935の使用に適用されます**
 アプリケーションノートには、推奨の開始希釈率がありますが、適切な希釈率につきましてはご検討ください。

アプリケーション	Abreviews	特記事項
Flow Cyt		Use 5µl for 10 ⁵⁻⁸ cells. Use 5 µl (0.5 µg) per test. The antibody has been diluted for use at 5 µl per test, defined as the amount of antibody that will stain a cell sample in a final volume of approximately 100 µl. The number of cells within a sample should be determined empirically, but typically ranges between 1x10 ⁵ to 1x10 ⁸ cells.

画像



Flow cytometric analysis of human peripheral blood lymphocytes stained for CD3 with 5 µL (0.5 µg) ab241935 (solid line) or 0.5 µg redFluor™ 710 Mouse IgG1 isotype control (dashed line).

Please note: All products are "FOR RESEARCH USE ONLY. NOT FOR USE IN DIAGNOSTIC PROCEDURES"

Our Abpromise to you: Quality guaranteed and expert technical support

- Replacement or refund for products not performing as stated on the datasheet
- Valid for 12 months from date of delivery
- Response to your inquiry within 24 hours

- We provide support in Chinese, English, French, German, Japanese and Spanish
- Extensive multi-media technical resources to help you
- We investigate all quality concerns to ensure our products perform to the highest standards

If the product does not perform as described on this datasheet, we will offer a refund or replacement. For full details of the Abpromise, please visit <https://www.abcam.co.jp/abpromise> or contact our technical team.

Terms and conditions

- Guarantee only valid for products bought direct from Abcam or one of our authorized distributors