

Anti-RECQ1 antibody ab272855

面格新 /

医薬用外劇物

製品の概要

| | |
|--------------|---|
| 製品名 | Anti-RECQ1 antibody |
| 製品の詳細 | Rabbit polyclonal to RECQ1 |
| 由来種 | Rabbit |
| アプリケーション | 適用あり: WB, IHC-P, ICC/IF, IP |
| 種交差性 | 交差種: Human |
| 免疫原 | Recombinant fragment within Human RECQ1 (N terminal). The exact sequence is proprietary. Database link: P46063 |
| ポジティブ・コントロール | WB: A431, HeLa and A375 whole cell lysate. IHC-P: Human breast carcinoma tissue. ICC/IF: HeLa cells. IP: HeLa whole cell lysate. |
| 特記事項 | <p>The Life Science industry has been in the grips of a reproducibility crisis for a number of years. Abcam is leading the way in addressing this with our range of recombinant monoclonal antibodies and knockout edited cell lines for gold-standard validation. Please check that this product meets your needs before purchasing.</p> <p>If you have any questions, special requirements or concerns, please send us an inquiry and/or contact our Support team ahead of purchase. Recommended alternatives for this product can be found below, along with publications, customer reviews and Q&As</p> |

製品の特性

| | |
|--------|---|
| 製品の状態 | Liquid |
| 保存方法 | Shipped at 4°C. Store at +4°C short term (1-2 weeks). Upon delivery aliquot. Store at -20°C long term. Avoid freeze / thaw cycle. |
| バッファー | pH: 7.00 Preservative: 0.01% Thimerosal (merthiolate) Constituents: 79.99% PBS, 20% Glycerol (glycerin, glycerine) |
| 精製度 | Immunogen affinity purified |
| ポリ/モノ | ポリクローナル |
| アイソタイプ | IgG |

アプリケーション

The Abpromise guarantee

Abpromise保証は、次のテスト済みアプリケーションにおけるab272855の使用に適用されます

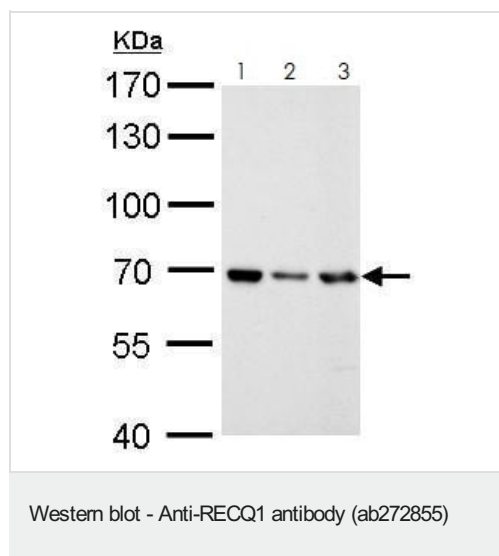
アプリケーションノートには、推奨の開始希釈率がありますが、適切な希釈率につきましてはご確認ください。

| アプリケーション | Abreviews | 特記事項 |
|----------|-----------|--|
| WB | | 1/500 - 1/3000. |
| IHC-P | | 1/100 - 1/1000. Perform heat mediated antigen retrieval with Tris/EDTA buffer pH 9.0 before commencing with IHC staining protocol. |
| ICC/IF | | 1/100 - 1/1000. |
| IP | | 1/100 - 1/500. |

ターゲット情報

| | |
|-------|--|
| 機能 | DNA helicase that may play a role in the repair of DNA that is damaged by ultraviolet light or other mutagens. Exhibits a magnesium-dependent ATP-dependent DNA-helicase activity that unwinds single- and double-stranded DNA in a 3'-5' direction. |
| 組織特異性 | High expression in heart, lung, skeletal muscle and kidney, low expression in brain. |
| 配列類似性 | Belongs to the helicase family. RecQ subfamily. Contains 1 helicase ATP-binding domain. Contains 1 helicase C-terminal domain. |
| 細胞内局在 | Nucleus. |

画像



All lanes : Anti-RECQ1 antibody (ab272855) at 1/1000 dilution

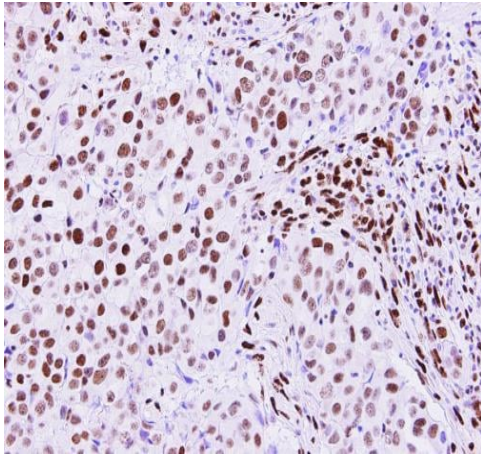
Lane 1 : A431 (human epidermoid carcinoma cell line) whole cell lysate

Lane 2 : HeLa (human epithelial cell line from cervix adenocarcinoma) whole cell lysate

Lane 3 : A-375 (human malignant melanoma cell line) whole cell lysate

Lysates/proteins at 30 µg per lane.

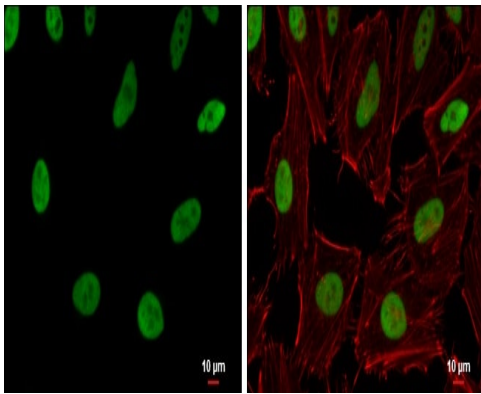
7.5% SDS-PAGE.



Immunohistochemistry (Formalin/PFA-fixed paraffin-embedded sections) - Anti-RECQ1 antibody (ab272855)

Paraffin-embedded human breast carcinoma tissue stained for RECQ1 using ab272855 at 1/250 dilution in immunohistochemical analysis.

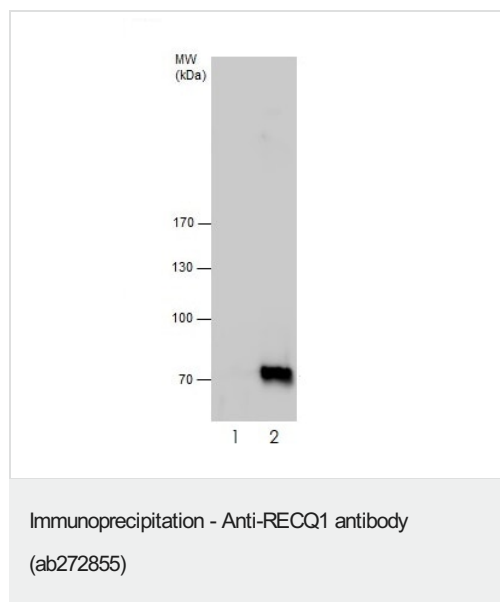
Antigen Retrieval: Trilogy™ (EDTA based, pH 8.0) buffer, 15 mins.



Immunocytochemistry/ Immunofluorescence - Anti-RECQ1 antibody (ab272855)

Immunofluorescence analysis of 4% paraformaldehyde-fixed HeLa (human epithelial cell line from cervix adenocarcinoma) cells labeling RECQ1 (green) using ab272855 at 1/500 dilution.

Counterstain: Phalloidin, a cytoskeleton marker (red).



Immunoprecipitation of RECQ1 protein from HeLa (human epithelial cell line from cervix adenocarcinoma) whole cell lysate using ab272855 at 5 µg. ab272855 also used for WB followed by an anti-Rabbit IgG-HRP secondary.

Lane 1: Control IgG.

Lane 2: ab272855 IP in HeLa whole cell lysate.

Please note: All products are "FOR RESEARCH USE ONLY. NOT FOR USE IN DIAGNOSTIC PROCEDURES"

Our Abpromise to you: Quality guaranteed and expert technical support

- Replacement or refund for products not performing as stated on the datasheet
- Valid for 12 months from date of delivery
- Response to your inquiry within 24 hours
- We provide support in Chinese, English, French, German, Japanese and Spanish
- Extensive multi-media technical resources to help you
- We investigate all quality concerns to ensure our products perform to the highest standards

If the product does not perform as described on this datasheet, we will offer a refund or replacement. For full details of the Abpromise, please visit <https://www.abcam.co.jp/abpromise> or contact our technical team.

Terms and conditions

- Guarantee only valid for products bought direct from Abcam or one of our authorized distributors