

Anti-RCN1/RCN antibody [EPR17163-117] - BSA and Azide free ab251515

KO 評価済 リコンビナント RabMAb

画像数 14

製品の概要

製品名	Anti-RCN1/RCN antibody [EPR17163-117] - BSA and Azide free
製品の詳細	Rabbit monoclonal [EPR17163-117] to RCN1/RCN - BSA and Azide free
由来種	Rabbit
アプリケーション	適用あり: Flow Cyt (Intra), WB, IP, IHC-P, ICC/IF
種交差性	交差種: Mouse, Rat, Human
免疫原	Synthetic peptide. This information is proprietary to Abcam and/or its suppliers.
ポジティブ・コントロール	WB: Human placenta and fetal kidney lysates; HEK-293, SH-SY5Y, HeLa, Neuro-2a, C6, PC-12 and NIH/3T3 whole cell lysates; E14 mouse embryo lysate; E14 rat embryo lysate; Mouse brain, heart, kidney and spleen lysates; Rat brain, heart, kidney and spleen lysates. IHC-P: Human cerebrum and lung adenocarcinoma tissues; Mouse cerebral cortex tissue; Rat hippocampus tissue. ICC/IF: SH-SY5Y, Neuro-2a and NIH/3T3 cells. Flow Cyt (intra): NIH/3T3 and SH-SY5Y cells. IP: 293T whole cell lysate.
特記事項	<p>ab251515 is the carrier-free version of ab210404.</p> <p>Our carrier-free antibodies are typically supplied in a PBS-only formulation, purified and free of BSA, sodium azide and glycerol. The carrier-free buffer and high concentration allow for increased conjugation efficiency.</p> <p>This conjugation-ready format is designed for use with fluorochromes, metal isotopes, oligonucleotides, and enzymes, which makes them ideal for antibody labelling, functional and cell-based assays, flow-based assays (e.g. mass cytometry) and Multiplex Imaging applications.</p> <p>Use our conjugation kits for antibody conjugates that are ready-to-use in as little as 20 minutes with <1 minute hands-on-time and 100% antibody recovery: available for fluorescent dyes, HRP, biotin and gold.</p> <p>This product is compatible with the Maxpar[®] Antibody Labeling Kit from Fluidigm, without the need for antibody preparation. Maxpar[®] is a trademark of Fluidigm Canada Inc.</p> <p>This product is a recombinant monoclonal antibody, which offers several advantages including:</p> <ul style="list-style-type: none">- High batch-to-batch consistency and reproducibility- Improved sensitivity and specificity- Long-term security of supply- Animal-free production

For more information [see here](#).

Our RabMAb[®] technology is a patented hybridoma-based technology for making rabbit monoclonal antibodies. For details on our patents, please refer to [RabMAb[®] patents](#).

製品の特性

製品の状態	Liquid
保存方法	Shipped at 4°C. Store at +4°C. Do Not Freeze.
バッファー	pH: 7.2 Constituent: PBS
キャリア・フリー	はい
精製度	Protein A purified
ポリ/モノ	モノクローナル
クローン名	EPR17163-117
アイソタイプ	IgG

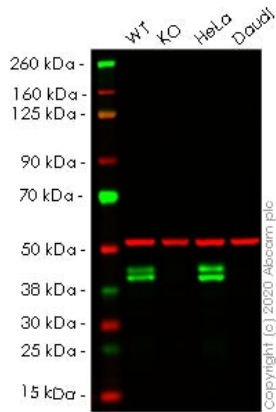
アプリケーション

The Abpromise guarantee **Abpromise保証は、次のテスト済みアプリケーションにおけるab251515の使用に適用されます**
アプリケーションノートには、推奨の開始希釈率がありますが、適切な希釈率につきましてはご検討ください。

アプリケーション	Abreviews	特記事項
Flow Cyt (Intra)		Use at an assay dependent concentration.
WB		Use at an assay dependent concentration. Detects a band of approximately 44, 46 kDa (predicted molecular weight: 39 kDa).
IP		Use at an assay dependent concentration.
IHC-P		Use at an assay dependent concentration. Perform heat mediated antigen retrieval with Tris/EDTA buffer pH 9.0 before commencing with IHC staining protocol.
ICC/IF		Use at an assay dependent concentration.

ターゲット情報

機能	May regulate calcium-dependent activities in the endoplasmic reticulum lumen or post-ER compartment.
配列類似性	Belongs to the CREC family. Contains 6 EF-hand domains.
細胞内局在	Endoplasmic reticulum lumen.



Western blot - Anti-RCN1/RCN antibody [EPR17163-117] - BSA and Azide free (ab251515)

All lanes : Anti-RCN1/RCN antibody [EPR17163-117] ([ab210404](#)) at 1/2000 dilution

Lane 1 : Wild-type HEK-293T cell lysate

Lane 2 : RCN1 knockout HEK-293T cell lysate

Lane 3 : HeLa cell lysate

Lane 4 : Daudi cell lysate

Lysates/proteins at 20 µg per lane.

Performed under reducing conditions.

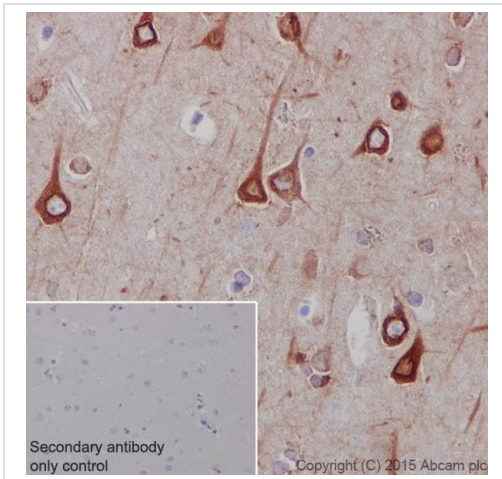
Predicted band size: 39 kDa

Observed band size: 45 kDa

This data was developed using the same antibody clone in a different buffer formulation ([ab210404](#)).

Lanes 1- 4: Merged signal (red and green). Green - [ab210404](#) observed at 45 kDa. Red - Anti-alpha Tubulin antibody [DM1A] - Loading Control ([ab7291](#)) observed at 50 kDa.

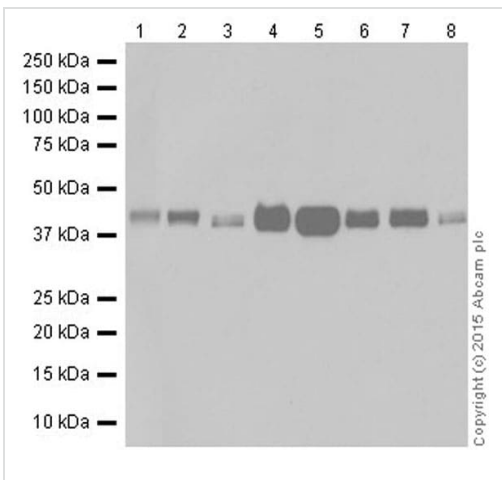
[ab210404](#) was shown to react with RCN1 in wild-type HEK-293T cells in western blot. Loss of signal was observed when knockout cell line [ab266098](#) (knockout cell lysate [ab258172](#)) was used. Wild-type HEK-293T and RCN1 knockout HEK-293T cell lysates were subjected to SDS-PAGE. Membrane was blocked for 1 hour at room temperature in 0.1% TBST with 3% non-fat dried milk. [ab210404](#) and Anti-alpha Tubulin antibody [DM1A] - Loading Control ([ab7291](#)) overnight at 4°C at a 1 in 2000 dilution and a 1 in 20000 dilution respectively. Blots were developed with Goat anti-Rabbit IgG H&L (IRDye®800CW) preadsorbed ([ab216773](#)) and Goat anti-Mouse IgG H&L (IRDye®680RD) preadsorbed ([ab216776](#)) secondary antibodies at 1 in 20000 dilution for 1 hour at room temperature before imaging.



Immunohistochemistry (Formalin/PFA-fixed paraffin-embedded sections) - Anti-RCN1/RCN antibody [EPR17163-117] - BSA and Azide free (ab251515)

This data was developed using **ab210404**, the same antibody clone in a different buffer formulation.

Immunohistochemical analysis of paraffin-embedded Human cerebrum tissue labeling RCN1/RCN with **ab210404** at 1/2000 dilution, followed by Goat Anti-Rabbit IgG H&L (HRP) (**ab97051**) at 1/500 dilution. Cytoplasm staining on neurons of Human cerebrum is observed. Counter stained with Hematoxylin. Secondary antibody only control: Used PBS instead of primary antibody, secondary antibody is **ab97051** at 1/500 dilution. Perform heat mediated antigen retrieval with Tris/EDTA buffer pH 9.0 before commencing with IHC staining protocol.



Western blot - Anti-RCN1/RCN antibody [EPR17163-117] - BSA and Azide free (ab251515)

All lanes : Anti-RCN1/RCN antibody [EPR17163-117] (**ab210404**) at 1/5000 dilution

Lane 1 : Human placenta lysate

Lane 2 : Human fetal kidney lysate

Lane 3 : HEK-293 (Human epithelial cell line from embryonic kidney) whole cell lysate

Lane 4 : SH-SY5Y (Human neuroblastoma cell line from bone marrow) whole cell lysate

Lane 5 : HeLa (Human epithelial cell line from cervix adenocarcinoma) whole cell lysate

Lane 6 : E 14 mouse embryo lysate

Lane 7 : E 14 rat embryo lysate

Lane 8 : Neuro-2a (Mouse neuroblastoma cell line) whole cell lysate

Lysates/proteins at 20 µg per lane.

Secondary

All lanes : Goat Anti-Rabbit IgG Peroxidase Conjugate, specific to the non-reduced form of IgG at 1/100000 dilution

Predicted band size: 39 kDa

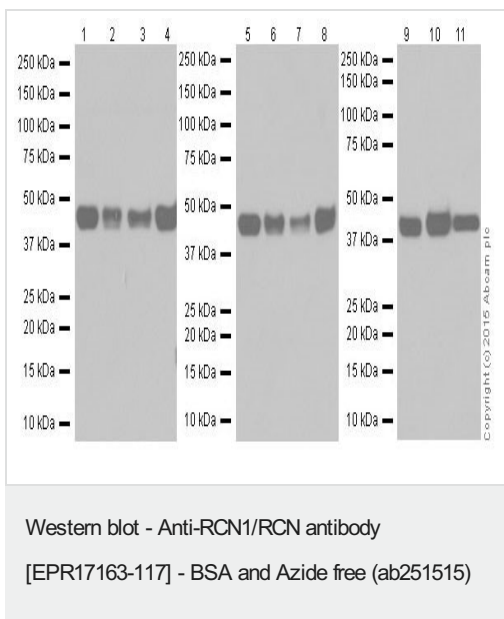
Observed band size: 44,46 kDa

Exposure time: 30 seconds

This data was developed using **ab210404**, the same antibody clone in a different buffer formulation.

Blocking and dilution buffer: 5% NFD/MTBST.

The molecular weight observed is consistent with what has been described in the literature (PMID: 8416973).



All lanes : Anti-RCN1/RCN antibody [EPR17163-117] (**ab210404**) at 1/2000 dilution

Lane 1 : Mouse brain lysate

Lane 2 : Mouse heart lysate

Lane 3 : Mouse kidney lysate

Lane 4 : Mouse spleen lysate

Lane 5 : Rat brain lysate

Lane 6 : Rat heart lysate

Lane 7 : Rat kidney lysate

Lane 8 : Rat spleen lysate

Lane 9 : C6 (Rat glial tumor cell line) whole cell lysate

Lane 10 : PC-12 (Rat adrenal gland pheochromocytoma cell line) whole cell lysate

Lane 11 : NIH/3T3 (Mouse embryonic fibroblast cell line) whole cell lysate

Lysates/proteins at 10 µg per lane.

Secondary

All lanes : Goat Anti-Rabbit IgG Peroxidase Conjugate, specific to the non-reduced form of IgG at 1/100000 dilution

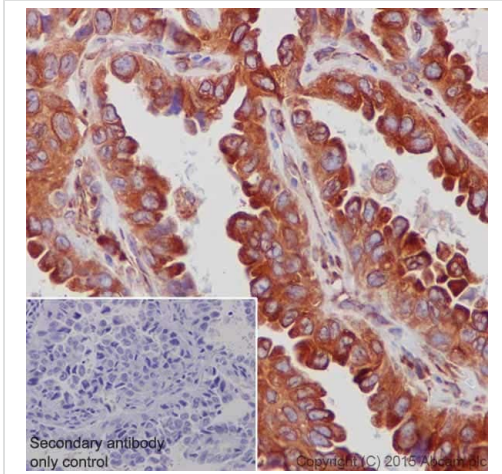
Predicted band size: 39 kDa

Observed band size: 44,46 kDa

This data was developed using **ab210404**, the same antibody clone in a different buffer formulation.

Blocking and dilution buffer: 5% NFD/MTBST.

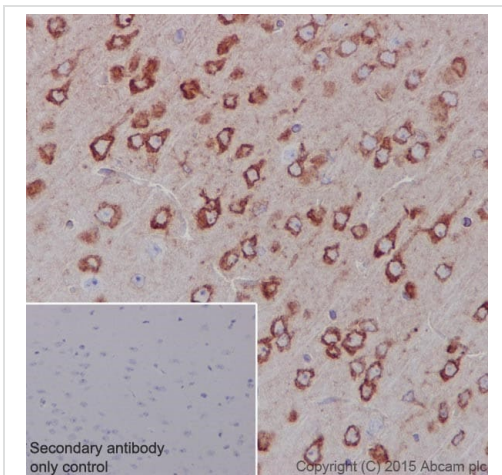
Exposure time: Lanes 1-8: 1 minute; Lanes 9-11: 10 seconds.



Immunohistochemistry (Formalin/PFA-fixed paraffin-embedded sections) - Anti-RCN1/RCN antibody [EPR17163-117] - BSA and Azide free (ab251515)

This data was developed using **ab210404**, the same antibody clone in a different buffer formulation.

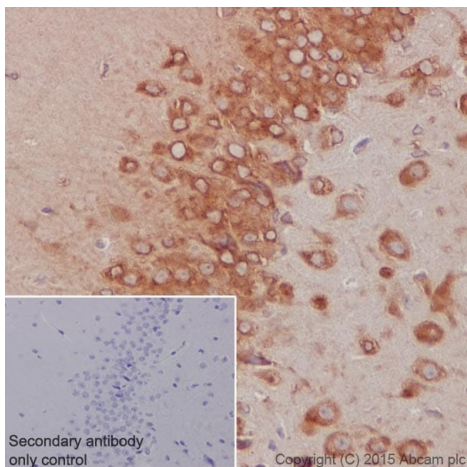
Immunohistochemical analysis of paraffin-embedded Human lung adenocarcinoma tissue labeling RCN1/RCN with **ab210404** at 1/2000 dilution, followed by Goat Anti-Rabbit IgG H&L (HRP) (**ab97051**) at 1/500 dilution. Cytoplasm staining on tumor cells of Human lung adenocarcinoma is observed. Counter stained with Hematoxylin. Secondary antibody only control: Used PBS instead of primary antibody, secondary antibody is **ab97051** at 1/500 dilution. Perform heat mediated antigen retrieval with Tris/EDTA buffer pH 9.0 before commencing with IHC staining protocol.



Immunohistochemistry (Formalin/PFA-fixed paraffin-embedded sections) - Anti-RCN1/RCN antibody [EPR17163-117] - BSA and Azide free (ab251515)

This data was developed using **ab210404**, the same antibody clone in a different buffer formulation.

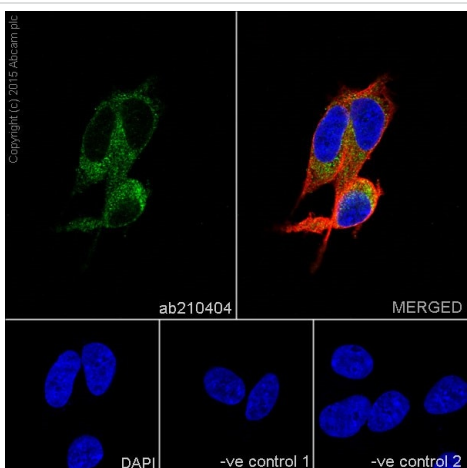
Immunohistochemical analysis of paraffin-embedded Mouse cerebral cortex tissue labeling RCN1/RCN with **ab210404** at 1/2000 dilution, followed by Goat Anti-Rabbit IgG H&L (HRP) (**ab97051**) at 1/500 dilution. Cytoplasm staining on neurons of mouse cerebral cortex is observed. Counter stained with Hematoxylin. Secondary antibody only control: Used PBS instead of primary antibody, secondary antibody is **ab97051** at 1/500 dilution. Perform heat mediated antigen retrieval with Tris/EDTA buffer pH 9.0 before commencing with IHC staining protocol.



Immunohistochemistry (Formalin/PFA-fixed paraffin-embedded sections) - Anti-RCN1/RCN antibody [EPR17163-117] - BSA and Azide free (ab251515)

This data was developed using [ab210404](#), the same antibody clone in a different buffer formulation.

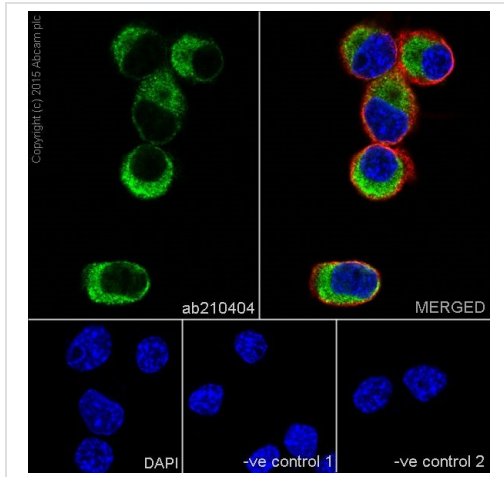
Immunohistochemical analysis of paraffin-embedded Rat hippocampus tissue labeling RCN1/RCN with [ab210404](#) at 1/2000 dilution, followed by Goat Anti-Rabbit IgG H&L (HRP) ([ab97051](#)) at 1/500 dilution. Cytoplasm staining on neurons of rat hippocampus is observed. Counter stained with Hematoxylin. Secondary antibody only control: Used PBS instead of primary antibody, secondary antibody is [ab97051](#) at 1/500 dilution. Perform heat mediated antigen retrieval with Tris/EDTA buffer pH 9.0 before commencing with IHC staining protocol.



Immunocytochemistry/ Immunofluorescence - Anti-RCN1/RCN antibody [EPR17163-117] - BSA and Azide free (ab251515)

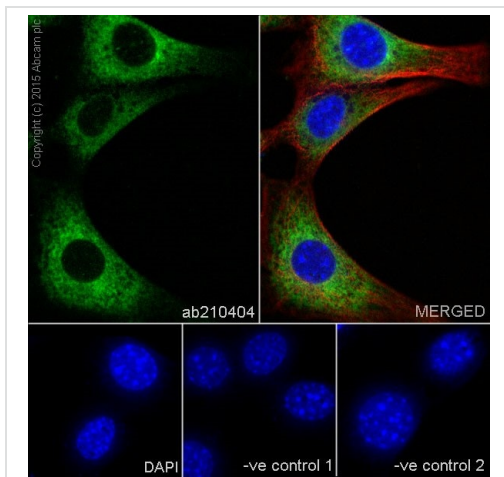
This data was developed using [ab210404](#), the same antibody clone in a different buffer formulation.

Immunofluorescent analysis of 4% paraformaldehyde-fixed, 0.1% Triton X-100 permeabilized SH-SY5Y (Human neuroblastoma cell line from bone marrow) cells labeling RCN1/RCN with [ab210404](#) at 1/500 dilution, followed by Goat Anti-Rabbit IgG (Alexa Fluor® 488) ([ab150077](#)) secondary antibody at 1/1000 dilution (green). Confocal image showing cytoplasmic staining on SH-SY5Y cell line. The nuclear counterstain is DAPI (blue). Tubulin is detected with Anti-alpha Tubulin antibody [DM1A] - Loading Control ([ab7291](#)) at 1/1000 dilution and Goat Anti-Mouse IgG H&L (Alexa Fluor® 594) preadsorbed ([ab150120](#)) at 1/1000 dilution (red). The negative controls are as follows:- -ve control 1: [ab210404](#) at 1/500 dilution followed by [ab150120](#) at 1/1000 dilution. -ve control 2: [ab7291](#) at 1/1000 dilution followed by [ab150077](#) at 1/1000 dilution.



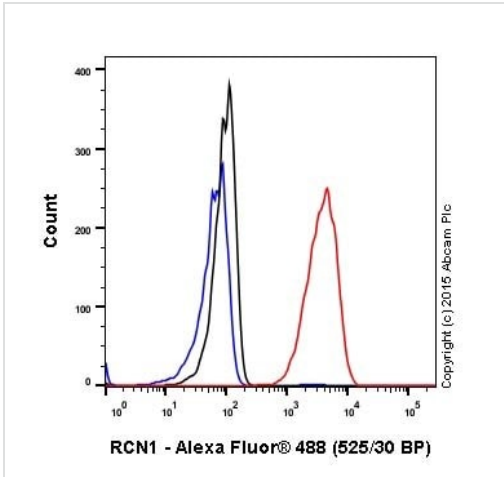
Immunocytochemistry/ Immunofluorescence - Anti-RCN1/RCN antibody [EPR17163-117] - BSA and Azide free (ab251515)

This data was developed using **ab210404**, the same antibody clone in a different buffer formulation. Immunofluorescent analysis of 4% paraformaldehyde-fixed, 0.1% Triton X-100 permeabilized Neuro-2a (Mouse neuroblastoma cell line) cells labeling RCN1/RCN with **ab210404** at 1/500 dilution, followed by Goat Anti-Rabbit IgG (Alexa Fluor® 488) (**ab150077**) secondary antibody at 1/1000 dilution (green). Confocal image showing cytoplasmic staining on Neuro-2a cell line. The nuclear counterstain is DAPI (blue). Tubulin is detected with Anti-alpha Tubulin antibody [DM1A] - Loading Control (**ab7291**) at 1/1000 dilution and Goat Anti-Mouse IgG H&L (Alexa Fluor® 594) preadsorbed (**ab150120**) at 1/1000 dilution (red). The negative controls are as follows:- -ve control 1: **ab210404** at 1/500 dilution followed by **ab150120** at 1/1000 dilution. -ve control 2: **ab7291** at 1/1000 dilution followed by **ab150077** at 1/1000 dilution.



Immunocytochemistry/ Immunofluorescence - Anti-RCN1/RCN antibody [EPR17163-117] - BSA and Azide free (ab251515)

This data was developed using **ab210404**, the same antibody clone in a different buffer formulation. Immunofluorescent analysis of 4% paraformaldehyde-fixed, 0.1% Triton X-100 permeabilized NIH/3T3 (Mouse embryonic fibroblast cell line) cells labeling RCN1/RCN with **ab210404** at 1/500 dilution, followed by Goat Anti-Rabbit IgG (Alexa Fluor® 488) (**ab150077**) secondary antibody at 1/1000 dilution (green). Confocal image showing cytoplasmic staining on NIH/3T3 cell line. The nuclear counterstain is DAPI (blue). Tubulin is detected with Anti-alpha Tubulin antibody [DM1A] - Loading Control (**ab7291**) at 1/1000 dilution and Goat Anti-Mouse IgG H&L (Alexa Fluor® 594) preadsorbed (**ab150120**) at 1/1000 dilution (red). The negative controls are as follows:- -ve control 1: **ab210404** at 1/500 dilution followed by **ab150120** at 1/1000 dilution. -ve control 2: **ab7291** at 1/1000 dilution followed by **ab150077** at 1/1000 dilution.

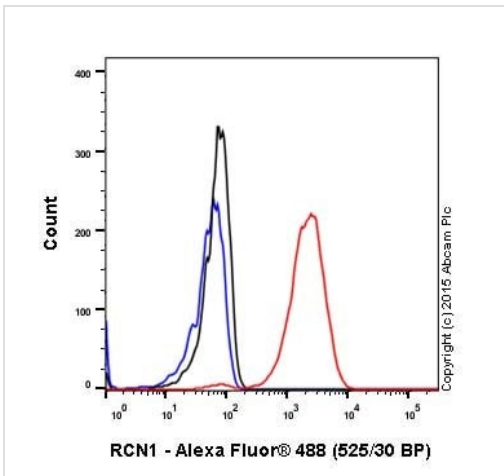


Flow Cytometry (Intracellular) - Anti-RCN1/RCN antibody [EPR17163-117] - BSA and Azide free (ab251515)

This data was developed using [ab210404](#), the same antibody clone in a different buffer formulation.

Intracellular flow cytometric analysis of 4% paraformaldehyde-fixed NIH/3T3 (Mouse embryonic fibroblast cell line) cells labeling RCN1/RCN with [ab210404](#) at 1/700 dilution (red) compared with a Rabbit IgG, monoclonal [EPR25A] - Isotype Control ([ab172730](#)) (black) and an unlabelled control (cells without incubation with primary antibody and secondary antibody) (blue). Goat anti Rabbit IgG (Alexa Fluor[®] 488) at 1/500 dilution was used as the secondary antibody.

Cells were permeabilised with 90% methanol (diluted with 1X PBS).

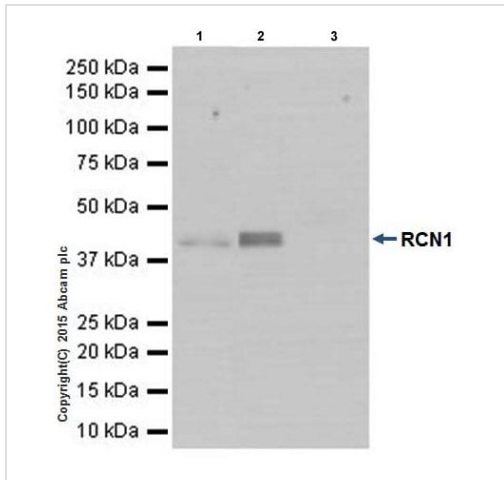


Flow Cytometry (Intracellular) - Anti-RCN1/RCN antibody [EPR17163-117] - BSA and Azide free (ab251515)

This data was developed using [ab210404](#), the same antibody clone in a different buffer formulation.

Intracellular flow cytometric analysis of 4% paraformaldehyde-fixed SH-SY5Y (Human neuroblastoma cell line from bone marrow) cells labeling RCN1/RCN with [ab210404](#) at 1/700 dilution (red) compared with a Rabbit IgG, monoclonal [EPR25A] - Isotype Control ([ab172730](#)) (black) and an unlabelled control (cells without incubation with primary antibody and secondary antibody) (blue). Goat anti Rabbit IgG (Alexa Fluor[®] 488) at 1/500 dilution was used as the secondary antibody.





Cells were permeabilised with 90% methanol (diluted with 1X PBS).



Immunoprecipitation - Anti-RCN1/RCN antibody [EPR17163-117] - BSA and Azide free (ab251515)

This data was developed using **ab210404**, the same antibody clone in a different buffer formulation. RCN1/RCN was immunoprecipitated from 1 mg of 293T (Human epithelial cell line from embryonic kidney) whole cell lysate with **ab210404** at 1/50 dilution. Western blot was performed from the immunoprecipitate using **ab210404** at 1/1000 dilution. VeriBlot for IP Detection Reagent (HRP) (**ab131366**), was used for detection at 1/10000 dilution. Lane 1: 293T whole cell lysate, 10 µg (Input). Lane 2: **ab210404** IP in 293T whole cell lysate. Lane 3: Rabbit IgG, monoclonal [EPR25A] - Isotype Control (**ab172730**) instead of **ab210404** in 293T whole cell lysate. Blocking and dilution buffer and concentration: 5% NFD/MTBST. Exposure time: 1 second.

Why choose a recombinant antibody?

 <p>Research with confidence Consistent and reproducible results</p>	 <p>Long-term and scalable supply Recombinant technology</p>
 <p>Success from the first experiment Confirmed specificity</p>	 <p>Ethical standards compliant Animal-free production</p>

Anti-RCN1/RCN antibody [EPR17163-117] - BSA and Azide free (ab251515)

Please note: All products are "FOR RESEARCH USE ONLY. NOT FOR USE IN DIAGNOSTIC PROCEDURES"

Our Abpromise to you: Quality guaranteed and expert technical support

- Replacement or refund for products not performing as stated on the datasheet
- Valid for 12 months from date of delivery
- Response to your inquiry within 24 hours
- We provide support in Chinese, English, French, German, Japanese and Spanish
- Extensive multi-media technical resources to help you
- We investigate all quality concerns to ensure our products perform to the highest standards

If the product does not perform as described on this datasheet, we will offer a refund or replacement. For full details of the Abpromise,

please visit <https://www.abcam.co.jp/abpromise> or contact our technical team.

Terms and conditions

- Guarantee only valid for products bought direct from Abcam or one of our authorized distributors